



DIAMOND TESTING

P.O. Box 157
HOISINGTON, KANSAS 67544
(620) 653-7550 • (800) 542-7313
STC 21098.D185

Company Nor-West Kansas Oil, LLC Lease & Well No. Schwarz & Pratt No. 1

Elevation 2874 KB Formation Lansing/Kansas City "A"-"D" Effective Pay -- Ft. Ticket No. 2074

Date 10-10-05 Sec. 28 Twp. 9S Range 29W County Sheridan State Kansas

Test Approved By Kitt Noah Diamond Representative Roger D. Friedly

Formation Test No. 1 Interval Tested from 3,979 ft. to 4,040 ft. Total Depth 4,040 ft.

Packer Depth 3,974ft. Size 6 3/4 in. Packer Depth -- ft. Size -- in.

Packer Depth 3,979ft. Size 6 3/4 in. Packer Depth -- ft. Size -- in.

Depth of Selective Zone Set ft.

Top Recorder Depth (Inside) 3,967ft. Recorder Number 21098 Cap. 5,000 psi

Bottom Recorder Depth (Outside) 4,037ft. Recorder Number 13387 Cap. 4,000 psi

Below Straddle Recorder Depth ft. Recorder Number Cap. psi

Drilling Contractor Anderson Drilling Company - Rig 1 Drill Collar Length -- ft. I.D. -- in.

Mud Type Chemical Viscosity 44 Weight Pipe Length -- ft. I.D. -- in.

Weight 9.3 Water Loss 8.8 cc. Drill Pipe Length 3,954 ft. I.D. 3 1/2 in.

Chlorides 2,800 P.P.M. Test Tool Length 25 ft. Tool Size 3 1/2 - IF in.

Jars: Make Bowen Serial Number Not Run Anchor Length 31' perf. w/30' drill pipe Size 4 1/2 - FH in.

Did Well Flow? No Reversed Out No Surface Choke Size 1 in. Bottom Choke Size 5/8 in.

Main Hole Size 7 7/8 in. Tool Joint Size 4 1/2 - XH in.

Blow: 1st Open: Weak, 1/2 in., blow increasing to 4 1/2 ins. No blow back during shut-in.

2nd Open: Weak, surface blow increasing to 1 in. No blow back during shut-in.

Recovered 1 ft. of clean oil = .014200 bbls.

Recovered 74 ft. of slightly oil cut watery mud = 1.050800 bbls. (Grind out: 2%-oil; 2%-water; 96%-mud)

Recovered 75 ft. of TOTAL FLUID = 1.065000 bbls.

Recovered ft. of

Recovered ft. of

Remarks Tool Sample Grind Out: 6%-oil; 24%-water; 70%-mud

Time Set Packer(s) 6:10 ^{AM.} P.M. Time Started Off Bottom 9:10 ^{AM.} P.M. Maximum Temperature 112°

Initial Hydrostatic Pressure (A) 1944 P.S.I.

Initial Flow Period Minutes 45 (B) 11 P.S.I. to (C) 32 P.S.I.

Initial Closed In Period Minutes 45 (D) 778 P.S.I.

Final Flow Period Minutes 45 (E) 34 P.S.I. to (F) 44 P.S.I.

Final Closed In Period Minutes 45 (G) 744 P.S.I.

Final Hydrostatic Pressure (H) 1940 P.S.I.



DIAMOND TESTING
P. O. Box 157
HOISINGTON, KANSAS 67544
(800) 542-7313

FLUID SAMPLE DATA

Company Nor-West Kansas Oil, LLC
Lease & Well No. Schwarz & Pratt No. 1
Date 10-10-05 Sec. 28 Twp. 9 S Range 29 W
Formation Test No. 1 Interval Tested From 3,979 ft. to 4,040 ft. Total Depth 4,040 ft.
Formation Lansing/Kansas City "A"- "D"

	<u>MUD PIT</u>	<u>RECOVERY</u>	
Viscosity	<u>44</u> CP	<u>40</u> CP	
Weight	<u>9.3</u>	<u>8.8</u>	
Water Loss	<u>8.8</u> CC	<u>16.8</u> CC	
PH Factor	<u>11.0</u>	<u>9.5</u>	Water <u>8.5</u>

	<u>RESISTIVITY</u>	<u>CHLORIDE CONTENT</u>
Recovery Water	<u>.50</u> @ <u>52</u> °F.	<u>18,000</u> ppm
Recovery Mud	<u>.94</u> @ <u>48</u> °F.	<u>10,000</u> ppm
Recovery Mud Filtrate	<u>1.00</u> @ <u>50</u> °F.	<u>9,000</u> ppm
Mud Pit Sample	<u>1.10</u> @ <u>62</u> °F.	<u>6,000</u> ppm
Mud Pit Sample Filtrate	<u>1.15</u> @ <u>74</u> °F.	<u>5,200</u> ppm

Sample Taken By ROGER D. FRIEDLY

Witness By KITT NOAH

Remarks Pit filtrate triton dish chlorides were 2,800 Ppm.
Recovery filtrate triton dish chlorides were 7,800 Ppm.
Recovery water dish chlorides were 14,000 Ppm.

GENERAL INFORMATION

Client Information:

Company: NOR-WEST KANSAS OIL, L.L.C.
Contact: PATRICK WANKER
Phone: Fax: e-mail:

Site Information:

Contact: KITT NOAH
Phone: Fax: e-mail:

Well Information:

Name: SCHWARZ & PRATT #1
Operator: NOR-WEST KANSAS OIL, L.L.C.
Location-Downhole: DST #1 LKC 'A-D' 3,979' - 4,040'
Location-Surface: SEC 28-9S-29W SHERIDAN COUNTY

Test Information:

Company: DIAMOND TESTING
Representative: ROGER D. FRIEDLY
Supervisor: KITT NOAH
Test Type: CONVENTIONAL Job Number:
Test Unit: NO. 1
Start Date: 2005/10/10 Start Time: 15:53:00
End Date: 2005/10/10 End Time: 23:21:00
Report Date: Prepared By:
Remarks: Qualified By:

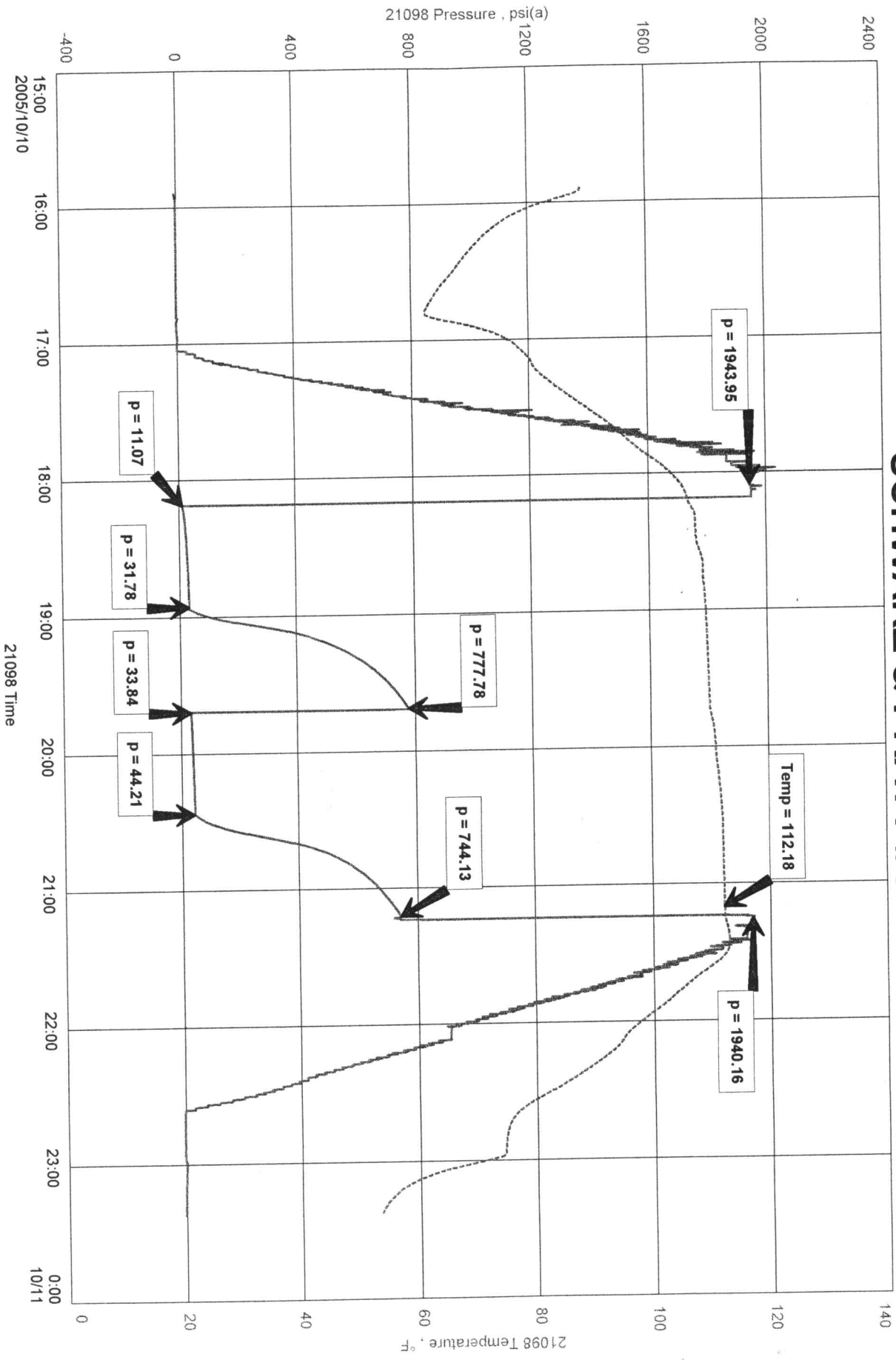
RECOVERED: 1' CLEAN OIL
74' SLTOCWM 2% OIL, 2% WTR, 96% WTR
75' TOTAL FLUID

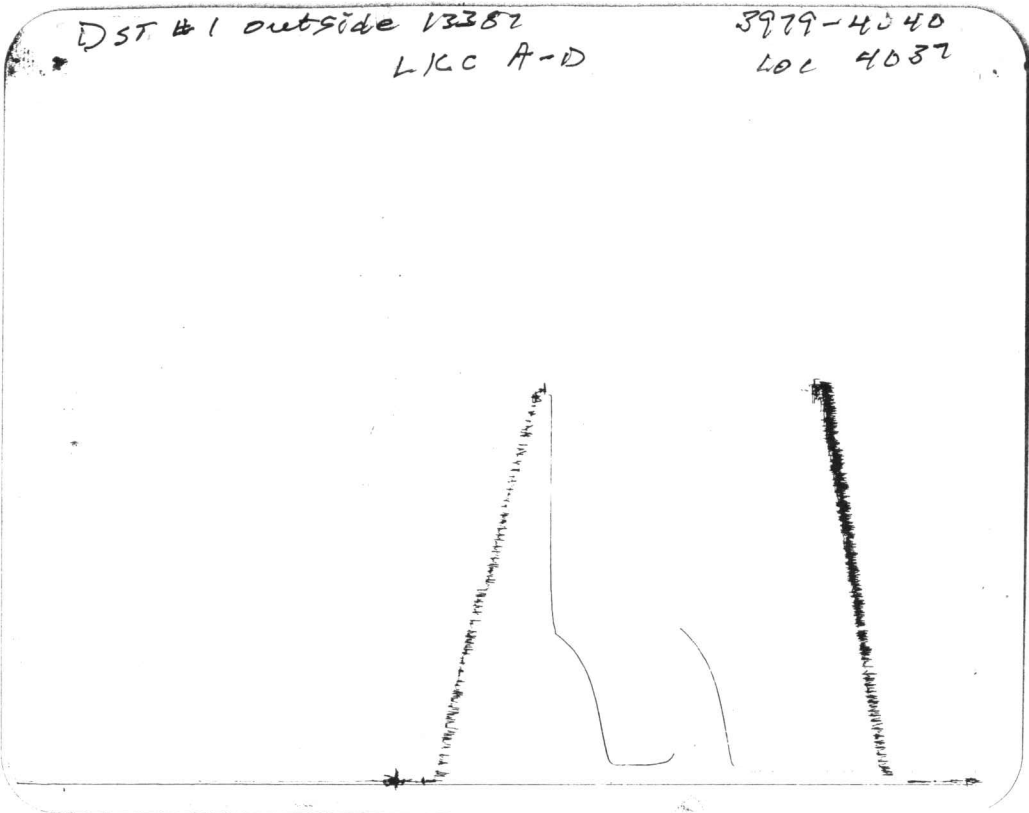
TOOL SAMPLE: 6% OIL, 24% WTR, 70% MUD

NOR-WEST KANSAS OIL, L.L.C.
 DST #1 LKC 'A-D' 3,979' - 4,040'
 Start Test Date: 2005/10/10
 Final Test Date: 2005/10/10

SCHWARZ & PRATT #1
 Formation: DST #1 LKC 'A-D' 3,979' - 4,040'
 Pool: WILDCAT

SCHWARZ & PRATT #1





This is an actual photograph of recorder chart.

POINT	PRESSURE		Elec. Office Reading	PSI
	Field Reading			
(A) Initial Hydrostatic Mud	1944		1944	PSI
(B) First Initial Flow Pressure.....	11		11	PSI
(C) First Final Flow Pressure	32		32	PSI
(D) Initial Closed-in Pressure	778		778	PSI
(E) Second Initial Flow Pressure.....	34		34	PSI
(F) Second Final Flow Pressure.....	44		44	PSI
(G) Final Closed-in Pressure	744		744	PSI
(H) Final Hydrostatic Mud	1940		1940	PSI



DIAMOND TESTING

P.O. Box 157

HOISINGTON, KANSAS 67544

(620) 653-7550 • (800) 542-7313
STC 21098.D186

Page 1 of 3 pages

Company Nor-West Kansas Oil, LLC Lease & Well No. Schwarz & Pratt No. 1
 Elevation 2874 KB Formation Lansing/Kansas City "E" & "F" Effective Pay -- Ft. Ticket No. 2075
 Date 10-11-05 Sec. 28 Twp. 9S Range 29W County Sheridan State Kansas

Test Approved By Kitt Noah Diamond Representative Roger D. Friedly

Formation Test No. 2 Interval Tested from 4,040 ft. to 4,070 ft. Total Depth 4,070 ft.

Packer Depth 4,035 ft. Size 6 3/4 in. Packer Depth -- ft. Size -- in.

Packer Depth 4,040 ft. Size 6 3/4 in. Packer Depth -- ft. Size -- in.

Depth of Selective Zone Set ft.

Top Recorder Depth (Inside) 4,028 ft. Recorder Number 21098 Cap. 5,000 psi

Bottom Recorder Depth (Outside) 4,067 ft. Recorder Number 13387 Cap. 4,000 psi

Below Straddle Recorder Depth ft. Recorder Number Cap. psi

Drilling Contractor Anderson Drilling Company - Rig 1 Drill Collar Length -- ft. I.D. -- in.

Mud Type Chemical Viscosity 42 Weight Pipe Length -- ft. I.D. -- in.

Weight 9.3 Water Loss 8.0 cc. Drill Pipe Length 4,015 ft. I.D. 3 1/2 in.

Chlorides 2,000 P.P.M. Test Tool Length 25 ft. Tool Size 3 1/2 - IF in.

Jars: Make Bowen Serial Number Not Run Anchor Length 30 ft. Size 4 1/2 - FH in.

Did Well Flow? No Reversed Out No Surface Choke Size 1 in. Bottom Choke Size 5/8 in.

Main Hole Size 7 7/8 in. Tool Joint Size 4 1/2 - XH in.

Blow: 1st Open: Good, 2 in., blow increasing. Off bottom of bucket in 5 3/4 mins. No blow back during shut-in.
 2nd Open: Weak, 1/2 in., blow increasing. Off bottom of bucket in 13 1/2 mins. No blow back during shut-in.

Recovered 159 ft. of oil & gas cut muddy water = 2.257800 bbls. (Grind out: 2%-oil; 6%-gas; 46%-mud; 46%-water)

Recovered 186 ft. of slightly oil cut muddy water = 2.641200 bbls. (Grind out: 2%-oil; 27%-mud; 71%-water)

Recovered 186 ft. of slightly oil cut muddy water = 2.641200 bbls. (Grind out: 2%-oil; 20%-mud; 78%-water)

Recovered 531 ft. of TOTAL FLUID = 7.540200 bbls.

Recovered ft. of

Remarks Tool Sample Grind Out: 1%-oil; 9%-mud; 90%-water

Time Set Packer(s) 11:22 ~~PM~~ ^{A.M.} Time Started Off Bottom 1:52 ~~P.M.~~ ^{P.M.} Maximum Temperature 124°

Initial Hydrostatic Pressure (A) 1955 P.S.I.

Initial Flow Period Minutes 30 (B) 34 P.S.I. to (C) 172 P.S.I.

Initial Closed In Period Minutes 45 (D) 1489 P.S.I.

Final Flow Period Minutes 30 (E) 184 P.S.I. to (F) 285 P.S.I.

Final Closed In Period Minutes 45 (G) 1235 P.S.I.

Final Hydrostatic Pressure (H) 1941 P.S.I.



DIAMOND TESTING
 P. O. Box 157
 HOISINGTON, KANSAS 67544
 (800) 542-7313

FLUID SAMPLE DATA

Company Nor-West Kansas Oil, LLC
 Lease & Well No. Schwarz & Pratt No. 1
 Date 10-11-05 Sec. 28 Twp. 9 S Range 29 W
 Formation Test No. 2 Interval Tested From 4,040 ft. to 4,070 ft. Total Depth 4,070 ft.
 Formation Lansing/Kansas City "E" & "F"

	MUD PIT	RECOVERY	
Viscosity	<u>42</u> CP	<u>38</u> CP	
Weight	<u>9.3</u>	<u>8.9</u>	
Water Loss	<u>8.0</u> CC	<u>16.0</u> CC	
PH Factor	<u>11.0</u>	<u>9.5</u>	Water <u>7.5</u>

	RESISTIVITY	CHLORIDE CONTENT
Recovery Water	<u>.18</u> @ <u>70</u> °F.	<u>38,000</u> ppm
Recovery Mud	<u>.34</u> @ <u>70</u> °F.	<u>20,000</u> ppm
Recovery Mud Filtrate	<u>.32</u> @ <u>74</u> °F.	<u>18,000</u> ppm
Mud Pit Sample	<u>1.05</u> @ <u>74</u> °F.	<u>5,800</u> ppm
Mud Pit Sample Filtrate	<u>1.10</u> @ <u>78</u> °F.	<u>5,000</u> ppm

Sample Taken By ROGER D. FRIEDLY

Witness By KITT NOAH

Remarks Pit filtrate triton dish chlorides were 2,000 Ppm.
Recovery filtrate triton dish chlorides were 14,000 Ppm.
Recovery water dish chlorides were 35,500 Ppm.

GENERAL INFORMATION

Client Information:

Company: NOR-WEST KANSAS OIL, L.L.C.
Contact: PATRICK WANKER
Phone: Fax: e-mail:

Site Information:

Contact: KITT NOAH
Phone: Fax: e-mail:

Well Information:

Name: SCHWARZ & PRATT #1
Operator: NOR-WEST KANSAS OIL, L.L.C.
Location-Downhole: DST #2 LKC 'E-F' 4,040' - 4,070'
Location-Surface: SEC 28-9S-29W SHERIDAN COUNTY

Test Information:

Company: DIAMOND TESTING
Representative: ROGER D. FRIEDLY
Supervisor: KITT NOAH
Test Type: CONVENTIONAL Job Number:
Test Unit: NO. 1
Start Date: 2005/10/11 Start Time: 09:20:00
End Date: 2005/10/11 End Time: 16:15:00
Report Date: Prepared By:
Remarks: Qualified By:

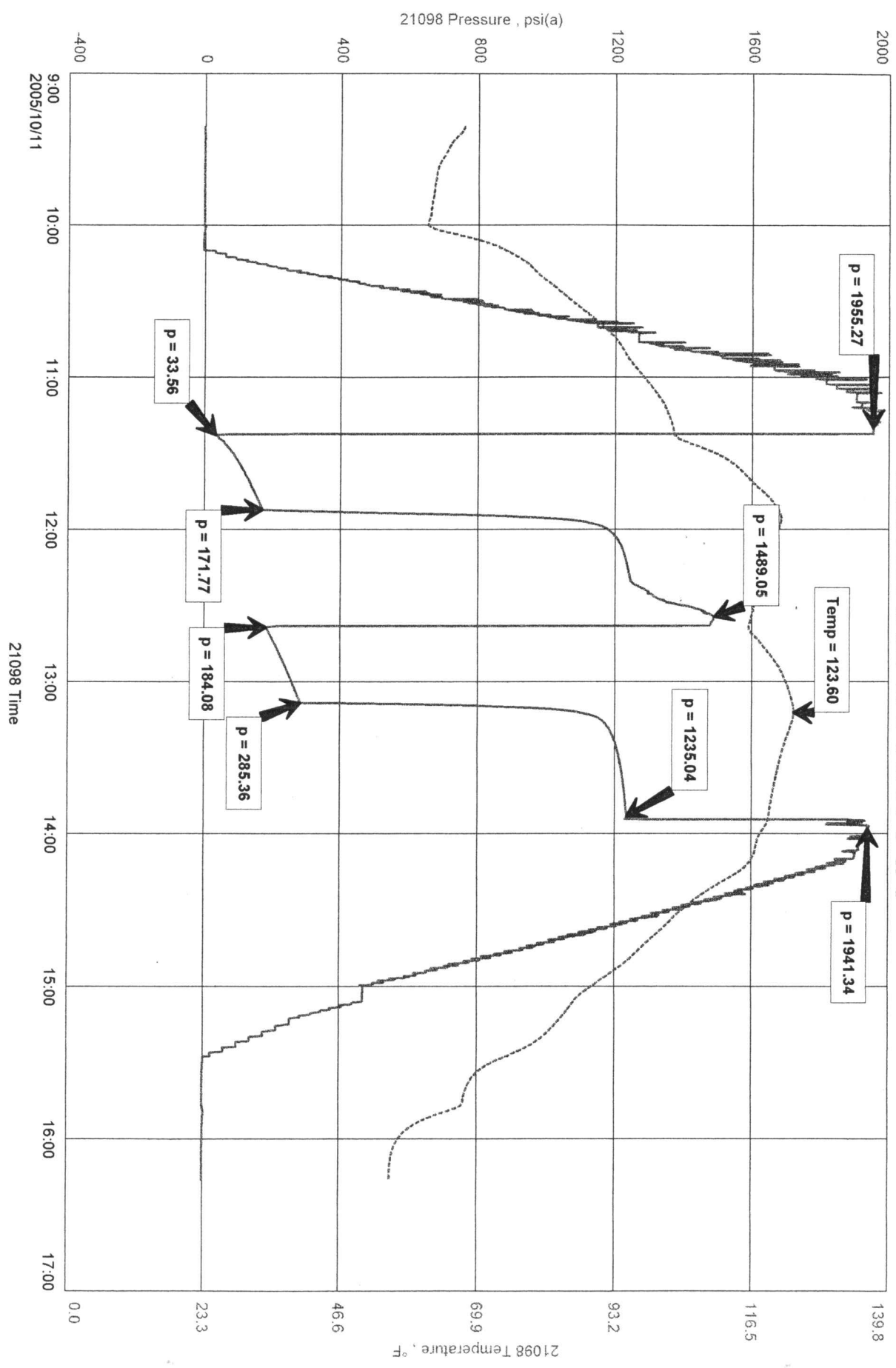
RECOVERED: 159' O&GCMW 2% OIL, 6% GAS, 46% MUD, 46% WTR
186' SLT OCMW 2% OIL, 27% MUD, 51% WTR
186' SLT OCMW 2% OIL, 20% MUD, 78% WTR
531' TOTAL FLUID

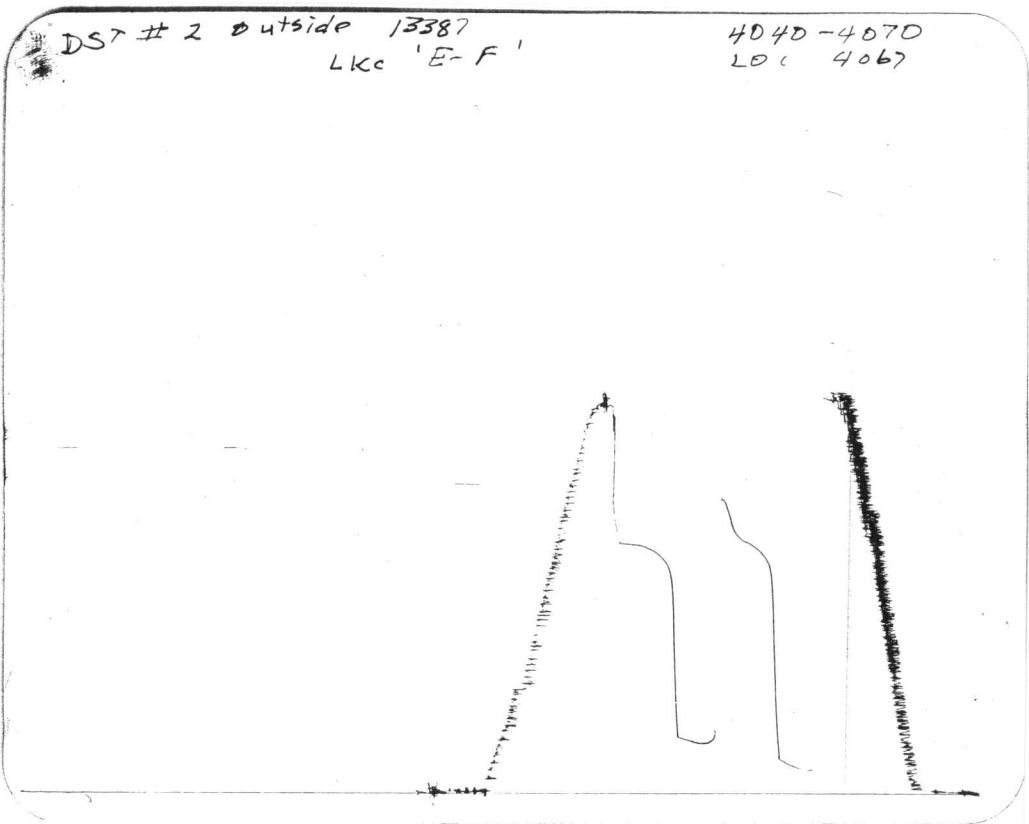
TOOL SAMPLE: 1% OIL, 9% MUD, 90% WTR

NOR-WEST KANSAS OIL, L.L.C.
 DST #2 LKC 'E-F' 4,040' -4,070'
 Start Test Date: 2005/10/11
 Final Test Date: 2005/10/11

SCHWARZ & PRATT #1
 Formation: DST #2 LKC 'E-F' 4,040' -4,070'
 Pool: WILDCAT

SCHWARZ & PRATT #1





This is an actual photograph of recorder chart.

POINT	PRESSURE		
	Field Reading	Elec. Office Reading	
(A) Initial Hydrostatic Mud	1955	1955	PSI
(B) First Initial Flow Pressure.....	34	34	PSI
(C) First Final Flow Pressure	172	172	PSI
(D) Initial Closed-in Pressure	1489	1489	PSI
(E) Second Initial Flow Pressure.....	184	184	PSI
(F) Second Final Flow Pressure.....	285	285	PSI
(G) Final Closed-in Pressure.....	1235	1235	PSI
(H) Final Hydrostatic Mud.....	1941	1941	PSI



DIAMOND TESTING

P.O. Box 157

HOISINGTON, KANSAS 67544

(620) 653-7550 • (800) 542-7313
STC 21098.D187

Page 1 of 3 pages

Company Nor-West Kansas Oil, LLC Lease & Well No. Schwarz & Pratt No. 1
 Elevation 2874 KB Formation Lansing/Kansas City "H"- "J" Effective Pay -- Ft. Ticket No. 2076
 Date 10-12-05 Sec. 28 Twp. 9S Range 29W County Sheridan State Kansas
 Test Approved By Kitt Noah Diamond Representative Roger D. Friedly

Formation Test No. 3 Interval Tested from 4,094 ft. to 4,180 ft. Total Depth 4,180 ft.

Packer Depth 4,089 ft. Size 6 3/4 in. Packer Depth -- ft. Size -- in.

Packer Depth 4,094 ft. Size 6 3/4 in. Packer Depth -- ft. Size -- in.

Depth of Selective Zone Set ft.

Top Recorder Depth (Inside) 4,082 ft. Recorder Number 21098 Cap. 5,000 psi

Bottom Recorder Depth (Outside) 4,177 ft. Recorder Number 13387 Cap. 4,000 psi

Below Straddle Recorder Depth ft. Recorder Number Cap. psi

Drilling Contractor Anderson Drilling Company - Rig 1 Drill Collar Length -- ft. I.D. -- in.

Mud Type Chemical Viscosity 42 Weight Pipe Length -- ft. I.D. -- in.

Weight 9.4 Water Loss 8.8 cc. Drill Pipe Length 4,069 ft. I.D. 3 1/2 in.

Chlorides 2,000 P.P.M. Test Tool Length 25 ft. Tool Size 3 1/2 - IF in.

Jars: Make Bowen Serial Number Not Run Anchor Length 24' perf. w/62' drill pipe Size 4 1/2 - FH in.

Did Well Flow? No Reversed Out No Surface Choke Size 1 in. Bottom Choke Size 5/8 in.

Main Hole Size 7/8 in. Tool Joint Size 4 1/2 - XH in.

Blow 1st Open: Weak, 1/2 in., blow increasing. Off bottom of bucket in 26 mins. Weak, surface blow back during shut-in.
2nd Open: Weak, 1/8 in., blow increasing. Off bottom of bucket in 26 mins. Weak, surface blow back during shut-in.

Recovered 230 ft. of gas in pipe

Recovered 20 ft. of clean oil = .284000 bbls. (Gravity: 39 @ 60°)

Recovered 30 ft. of gas & oil cut watery mud = .426000 bbls. (Grind out: 12%-gas; 12%-oil; 12%-water; 64%-mud)

Recovered 62 ft. of oil & gas cut watery mud = .880400 bbls. (Grind out: 2%-oil; 12%-gas; 36%-water; 50%-mud)

Recovered 186 ft. of oil cut muddy water = 2.641200 bbls. (Grind out: 2%-oil; 40%-mud; 58%-water)

Recovered 298 ft. of TOTAL FLUID = 4.231600 bbls.

Remarks Tool Sample Grind Out: 2%-oil; 12%-gas; 19%-mud; 67%-water

Time Set Packer(s) 8:53 ~~P.M.~~ ^{A.M.} Time Started Off Bottom 11:53 ~~P.M.~~ ^{A.M.} Maximum Temperature 123°

Initial Hydrostatic Pressure (A) 1992 P.S.I.

Initial Flow Period Minutes 45 (B) 5 P.S.I. to (C) 83 P.S.I.

Initial Closed In Period Minutes 45 (D) 1288 P.S.I.

Final Flow Period Minutes 45 (E) 84 P.S.I. to (F) 144 P.S.I.

Final Closed In Period Minutes 45 (G) 1274 P.S.I.

Final Hydrostatic Pressure (H) 1995 P.S.I.



DIAMOND TESTING
P. O. Box 157
HOISINGTON, KANSAS 67544
(800) 542-7313

FLUID SAMPLE DATA

Company Nor-West Kansas Oil, LLC
Lease & Well No. Schwarz & Pratt No. 1
Date 10-12-05 Sec. 28 Twp. 9 S Range 29 W
Formation Test No. 3 Interval Tested From 4,094 ft. to 4,180 ft. Total Depth 4,180 ft.
Formation Lansing/Kansas City "H"-"J"

	<u>MUD PIT</u>	<u>RECOVERY</u>	
Viscosity	<u>42</u> CP	<u>--</u> CP	
Weight	<u>9.4</u>	<u>--</u>	
Water Loss	<u>8.8</u> CC	<u>--</u> CC	
PH Factor	<u>10.0</u>	<u>--</u>	Water <u>7.0</u>

	<u>RESISTIVITY</u>	<u>CHLORIDE CONTENT</u>
Recovery Water	<u>--</u> @ <u>--</u> °F. <u>--</u> ppm	
Recovery Mud	<u>--</u> @ <u>--</u> °F. <u>--</u> ppm	
Recovery Mud Filtrate	<u>--</u> @ <u>--</u> °F. <u>--</u> ppm	
Mud Pit Sample	<u>1.30</u> @ <u>60</u> °F. <u>5,400</u> ppm	
Mud Pit Sample Filtrate	<u>1.40</u> @ <u>64</u> °F. <u>4,000</u> ppm	

Sample Taken By ROGER D. FRIEDLY

Witness By KITT NOAH

Remarks Pit filtrate triton dish chlorides were 2,000 Ppm.
Recovery water dish chlorides were 35,000 Ppm.

GENERAL INFORMATION

Client Information:

Company: NOR-WEST KANSAS OIL, L.L.C.
Contact: PATRICK WANKER
Phone: Fax: e-mail:

Site Information:

Contact: KITT NOAH
Phone: Fax: e-mail:

Well Information:

Name: SCHWARZ & PRATT #1
Operator: NOR-WEST KANSAS OIL, L.L.C.
Location-Downhole: DST #3 LKC 'H-J' 4,094' - 4,180'
Location-Surface: SEC 28-9S-29W SHERIDAN COUNTY

Test Information:

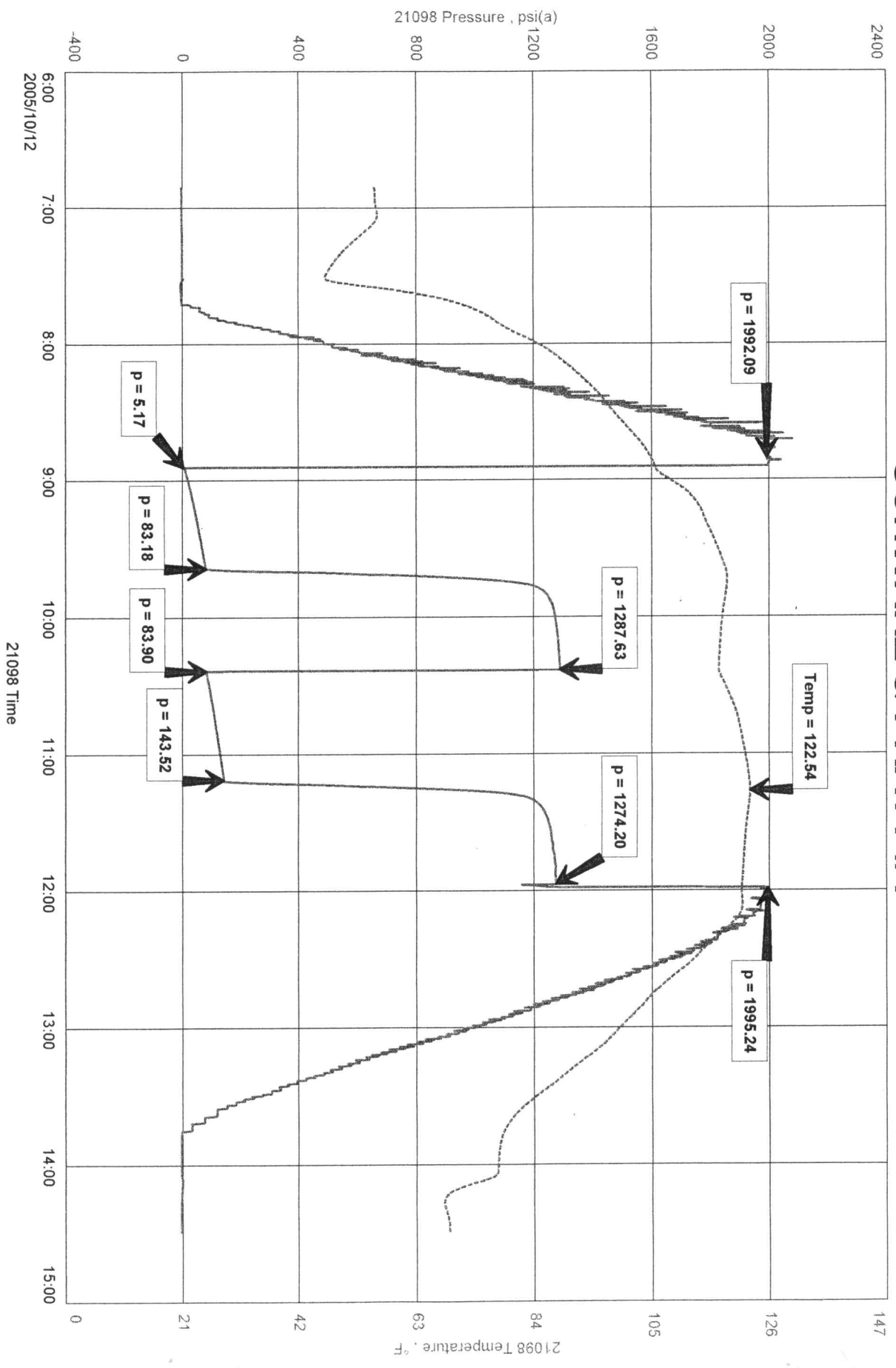
Company: DIAMOND TESTING
Representative: ROGER D. FRIEDLY
Supervisor: KITT NOAH
Test Type: CONVENTIONAL Job Number:
Test Unit: NO. 1
Start Date: 2005/10/12 Start Time: 06:50:00
End Date: 2005/10/12 End Time: 14:28:00
Report Date: Prepared By:
Remarks: Qualified By:

RECOVERED: 230' GAS IN PIPE
20' CLEAN OIL 39 GRAVITY @ 60 deg.
30' G&OCWM 12% GAS, 13% OIL, 12% WTR, 64% MUD
62' O&GCWM 2% OIL, 12% GAS, 26% WTR, 50% MUD
186' OCMW 2% OIL, 40% MUD, 58% WTR
298' TOTAL FLUID

NOR-WEST KANSAS OIL, L.L.C.
DST #3 LKC 'H-J' 4,094' - 4,180'
Start Test Date: 2005/10/12
Final Test Date: 2005/10/12

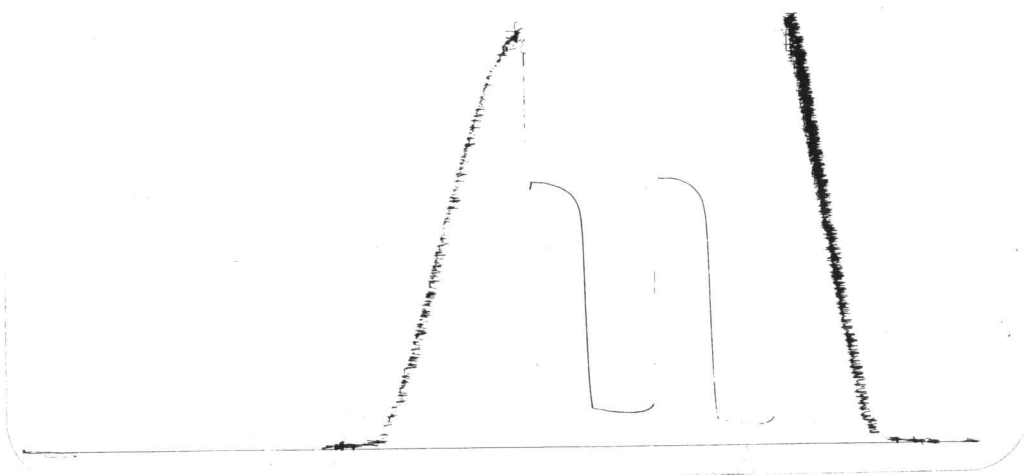
SCHWARZ & PRATT #1
Formation: DST #3 LKC 'H-J' 4,094' - 4,180'
Pool: WILDCAT

SCHWARZ & PRATT #1



DST # 3 outside 13387
 LIC H-J

4094-4180
 LOC 4177



This is an actual photograph of recorder chart.

POINT	PRESSURE		
	Field Reading	Elec. Office Reading	
(A) Initial Hydrostatic Mud	1992	1992	PSI
(B) First Initial Flow Pressure.....	5	5	PSI
(C) First Final Flow Pressure	83	83	PSI
(D) Initial Closed-in Pressure	1288	1288	PSI
(E) Second Initial Flow Pressure.....	84	84	PSI
(F) Second Final Flow Pressure.....	144	144	PSI
(G) Final Closed-in Pressure.....	1274	1274	PSI
(H) Final Hydrostatic Mud.....	1995	1995	PSI



DIAMOND TESTING

P.O. Box 157

HOISINGTON, KANSAS 67544

(620) 653-7550 • (800) 542-7313
STC 21098.D188

Page 1 of 3 pages

Company Nor-West Kansas Oil, LLC Lease & Well No. Schwarz & Pratt No. 1

Elevation 2874 KB Formation Lansing/Kansas City "K" & "L" Effective Pay -- Ft. Ticket No. 2077

Date 10-13-05 Sec. 28 Twp. 9S Range 29W County Sheridan State Kansas

Test Approved By Kitt Noah Diamond Representative Roger D. Friedly

Formation Test No. 4 Interval Tested from 4,177 ft. to 4,240 ft. Total Depth 4,240 ft.

Packer Depth 4,172 ft. Size 6 3/4 in. Packer Depth -- ft. Size -- in.

Packer Depth 4,177 ft. Size 6 3/4 in. Packer Depth -- ft. Size -- in.

Depth of Selective Zone Set ft.

Top Recorder Depth (Inside) 4,165 ft. Recorder Number 21098 Cap. 5,000 psi

Bottom Recorder Depth (Outside) 4,237 ft. Recorder Number 13387 Cap. 4,000 psi

Below Straddle Recorder Depth ft. Recorder Number Cap. psi

Drilling Contractor Anderson Drilling Company - Rig 1 Drill Collar Length -- ft. I.D. -- in.

Mud Type Chemical Viscosity 51 Weight Pipe Length -- ft. I.D. -- in.

Weight 9.2 Water Loss 8.8 cc. Drill Pipe Length 4,152 ft. I.D. 3 1/2 in.

Chlorides 2,200 P.P.M. Test Tool Length 25 ft. Tool Size 3 1/2 - IF in.

Jars: Make Bowen Serial Number Not Run Anchor Length 31' perf. w/32' drill pipe Size 4 1/2 - FH in.

Did Well Flow? No Reversed Out No Surface Choke Size 1 in. Bottom Choke Size 5/8 in.

Main Hole Size 7 7/8 in. Tool Joint Size 4 1/2 - XH in.

Blow: 1st Open: Weak, 1/8 in., blow increasing to 1/2 in. No blow back during shut-in.
2nd Open: No blow.

Recovered 15 ft. of drilling mud with a few oil specks = .213000 bbls.

Recovered ft. of

Recovered ft. of

Recovered ft. of

Recovered ft. of

Remarks Tool Sample Grind Out: 1%-oil; 99%-mud

Time Set Packer(s) 3:06 ^{A.M.}~~P.M.~~ Time Started Off Bottom 5:06 ^{A.M.}~~P.M.~~ Maximum Temperature 111 °

Initial Hydrostatic Pressure (A) 2017 P.S.I.

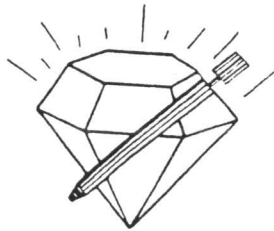
Initial Flow Period Minutes 30 (B) 7 P.S.I. to (C) 10 P.S.I.

Initial Closed In Period Minutes 30 (D) 48 P.S.I.

Final Flow Period Minutes 30 (E) 11 P.S.I. to (F) 12 P.S.I.

Final Closed In Period Minutes 30 (G) 27 P.S.I.

Final Hydrostatic Pressure (H) 2012 P.S.I.



DIAMOND TESTING
P. O. Box 157
HOISINGTON, KANSAS 67544
(800) 542-7313

FLUID SAMPLE DATA

Company Nor-West Kansas Oil, LLC
Lease & Well No. Schwarz & Pratt No. 1
Date 10-13-05 Sec. 28 Twp. 9 S Range 29 W
Formation Test No. 4 Interval Tested From 4,177 ft. to 4,240 ft. Total Depth 4,240 ft.
Formation Lansing/Kansas City "K" & "L"

	MUD PIT	RECOVERY
Viscosity	<u>51</u> CP	<u>54</u> CP
Weight	<u>9.2</u>	<u>9.2</u>
Water Loss	<u>8.8</u> CC	<u>8.0</u> CC
PH Factor	<u>10.5</u>	<u>10.5</u>

	RESISTIVITY	CHLORIDE CONTENT
Recovery Water	<u>--</u> @ <u>--</u> °F.	<u>--</u> ppm
Recovery Mud	<u>1.20</u> @ <u>62</u> °F.	<u>6,000</u> ppm
Recovery Mud Filtrate	<u>1.40</u> @ <u>60</u> °F.	<u>5,000</u> ppm
Mud Pit Sample	<u>1.30</u> @ <u>60</u> °F.	<u>5,400</u> ppm
Mud Pit Sample Filtrate	<u>1.25</u> @ <u>70</u> °F.	<u>4,800</u> ppm

Sample Taken By ROGER D. FRIEDLY

Witness By KITT NOAH

Remarks Pit filtrate triton dish chlorides were 2,200 Ppm.
Recovery filtrate triton dish chlorides were 2,400 Ppm.

GENERAL INFORMATION

Client Information:

Company: NOR-WEST KANSAS OIL, L.L.C.
Contact: PATRICK WANKER
Phone: Fax: e-mail:

Site Information:

Contact: KITT NOAH
Phone: Fax: e-mail:

Well Information:

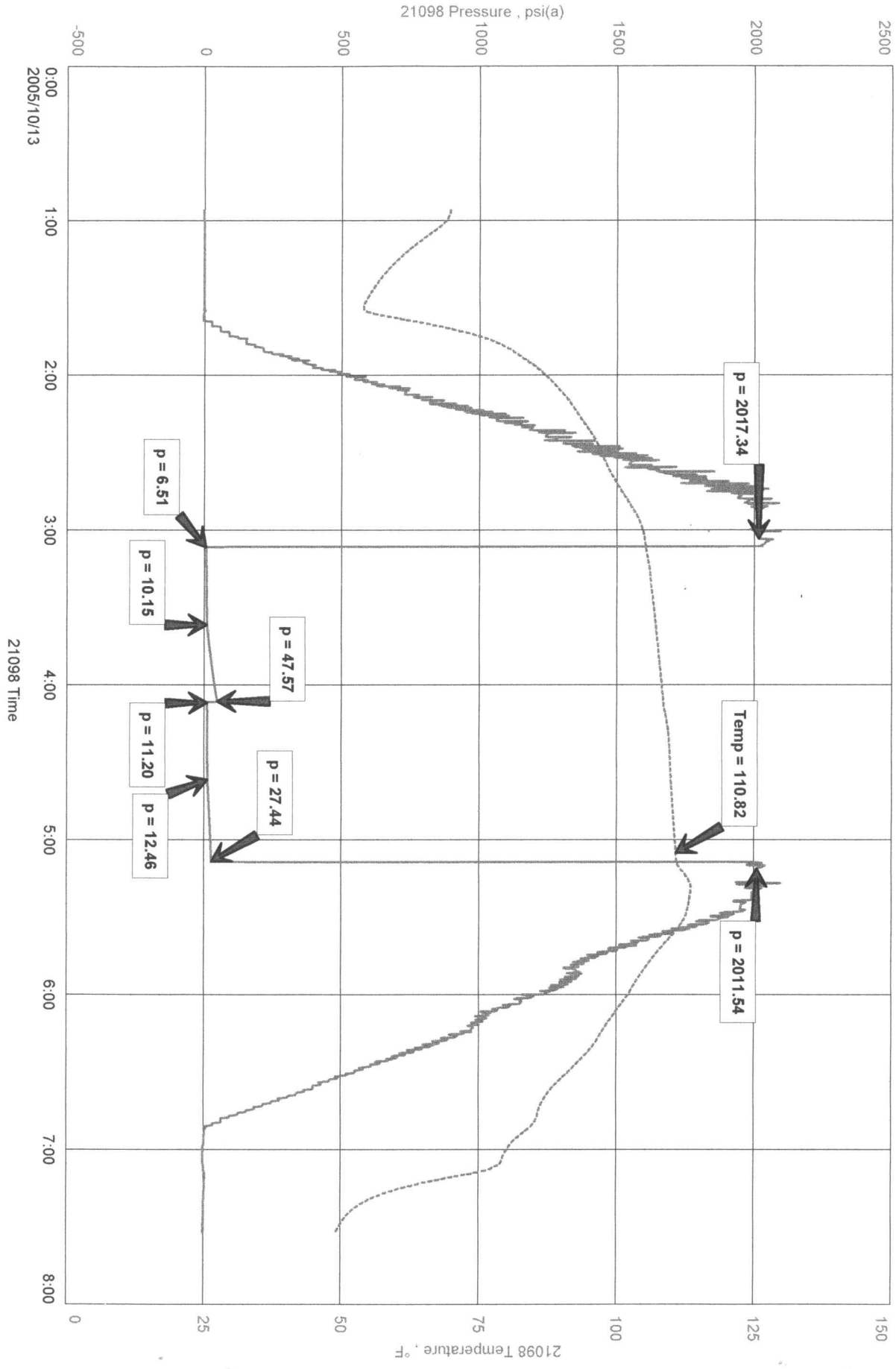
Name: SCHWARZ & PRATT #1
Operator: NOR-WEST KANSAS OIL, L.L.C.
Location-Downhole: DST #4 LKC 'K-L' 4,177' - 4,240'
Location-Surface: SEC 28-9S-29W SHERIDAN COUNTY

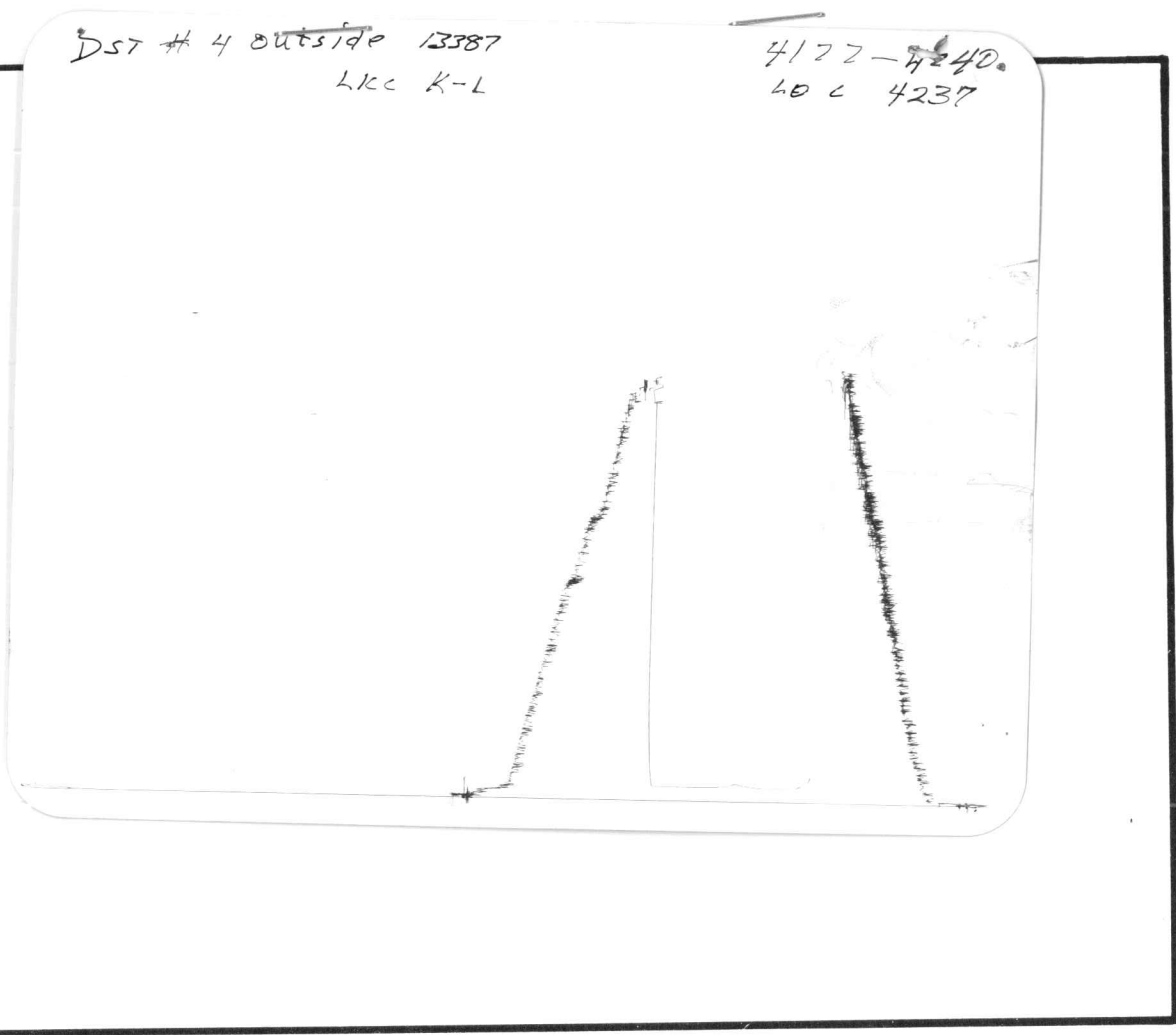
Test Information:

Company: DIAMOND TESTING
Representative: ROGER D. FRIEDLY
Supervisor: KITT NOAH
Test Type: CONVENTIONAL Job Number:
Test Unit: NO. 1
Start Date: 2005/10/13 Start Time: 00:54:00
End Date: 2005/10/13 End Time: 07:31:00
Report Date: Prepared By:
Remarks: Qualified By:

RECOVERED: 15' DRILLING MUD WITHA FEW OIL SPECKS
TOOL SAMPLE: 1% OIL, 99% MUD

SCHWARZ & PRATT #1





This is an actual photograph of recorder chart.

POINT	PRESSURE		Elec. Office Reading	PSI
	Field Reading			
(A) Initial Hydrostatic Mud	2017	2017		PSI
(B) First Initial Flow Pressure.....	7	7		PSI
(C) First Final Flow Pressure	10	10		PSI
(D) Initial Closed-in Pressure	48	48		PSI
(E) Second Initial Flow Pressure.....	11	11		PSI
(F) Second Final Flow Pressure.....	12	12		PSI
(G) Final Closed-in Pressure.....	27	27		PSI
(H) Final Hydrostatic Mud.....	2012	2012		PSI