



TRILOBITE TESTING, INC.

DRILL STEM TEST REPORT

Ritchie Exploration, Inc.

8-9s-30w/Sheridan-KS

8100 E. 22nd St. N #700
Wichita, KS 67278

CKG - Schiltz #1

Job Ticket: 46103

DST#: 1

ATTN: Bob Peterson

Test Start: 2012.03.25 @ 12:09:00

GENERAL INFORMATION:

Formation: **Topeka**

Deviated: No Whipstock: ft (KB)

Time Tool Opened: 13:59:45

Time Test Ended: 19:26:15

Test Type: Conventional Bottom Hole (Initial)

Tester: Kevin Mack

Unit No: 43

Interval: **3790.00 ft (KB) To 3850.00 ft (KB) (TVD)**

Reference Elevations: 2954.00 ft (KB)

Total Depth: 3850.00 ft (KB) (TVD)

2949.00 ft (CF)

Hole Diameter: 7.88 inches Hole Condition: Good

KB to GR/CF: 5.00 ft

Serial #: 6799

Inside

Press @ Run Depth: 1073.24 psig @ 3791.00 ft (KB)

Capacity: 8000.00 psig

Start Date: 2012.03.25

End Date:

2012.03.25

Last Calib.:

2012.03.25

Start Time: 12:09:05

End Time:

19:26:14

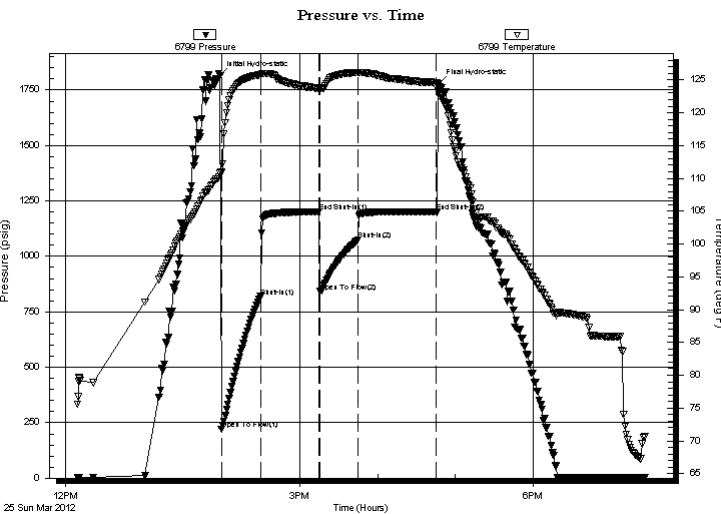
Time On Btm:

2012.03.25 @ 13:58:45

Time Off Btm:

2012.03.25 @ 16:47:15

TEST COMMENT: IF- BoB in 1 1/2 min.
IS- No Return
FF- BoB in 2 1/2 min.
FS- No Return



PRESSURE SUMMARY

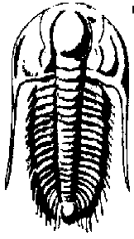
Time (Min.)	Pressure (psig)	Temp (deg F)	Annotation
0	1814.64	110.77	Initial Hydro-static
1	220.48	110.91	Open To Flow (1)
31	819.16	125.78	Shut-In(1)
76	1200.60	123.61	End Shut-In(1)
77	841.48	123.50	Open To Flow (2)
106	1073.24	126.08	Shut-In(2)
166	1201.71	124.57	End Shut-In(2)
169	1779.39	122.86	Final Hydro-static

Recovery

Length (ft)	Description	Volume (bbl)
5.00	Mud (Heavy) 100M	0.02
1181.00	MW 5M 95W	15.52
372.00	MW 20M 80W	5.22
630.00	WM 70M 30W	8.84

Gas Rates

	Choke (inches)	Pressure (psig)	Gas Rate (Mcf/d)



**TRILOBITE
TESTING, INC.**

DRILL STEM TEST REPORT

FLUID SUMMARY

Ritchie Exploration, Inc.

8-9s-30w/Sheridan-KS

8100 E. 22nd St. N #700
Wichita, KS 67278

CKG - Schiltz #1

Job Ticket: 46103

DST#: 1

ATTN: Bob Peterson

Test Start: 2012.03.25 @ 12:09:00

Mud and Cushion Information

Mud Type: Gel Chem

Cushion Type:

Oil API:

deg API

Mud Weight: 9.00 lb/gal

Cushion Length:

ft

Water Salinity:

33000 ppm

Viscosity: 54.00 sec/qt

Cushion Volume:

bbbl

Water Loss: 6.20 in³

Gas Cushion Type:

Resistivity: 0.00 ohm.m

Gas Cushion Pressure:

psig

Salinity: 900.00 ppm

Filter Cake: 1.00 inches

Recovery Information

Recovery Table

Length ft	Description	Volume bbl
5.00	Mud (Heavy) 100M	0.025
1181.00	MW 5M 95W	15.519
372.00	MW 20M 80W	5.218
630.00	WM 70M 30W	8.837

Total Length: 2188.00 ft Total Volume: 29.599 bbl

Num Fluid Samples: 0

Num Gas Bombs: 0

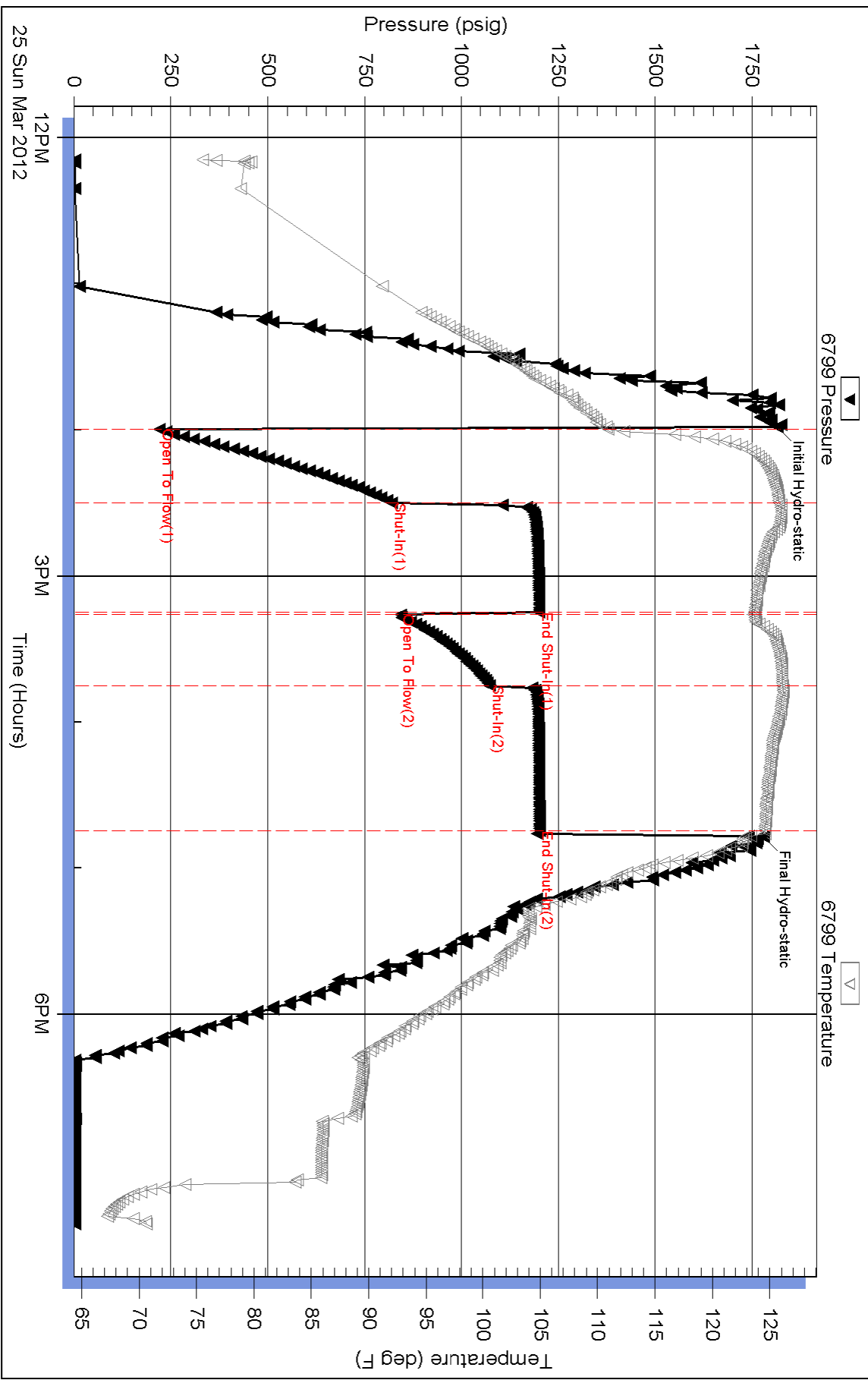
Serial #:

Laboratory Name:

Laboratory Location:

Recovery Comments: RW = .19 @ 80 deg. = 33,000ppm

Pressure vs. Time



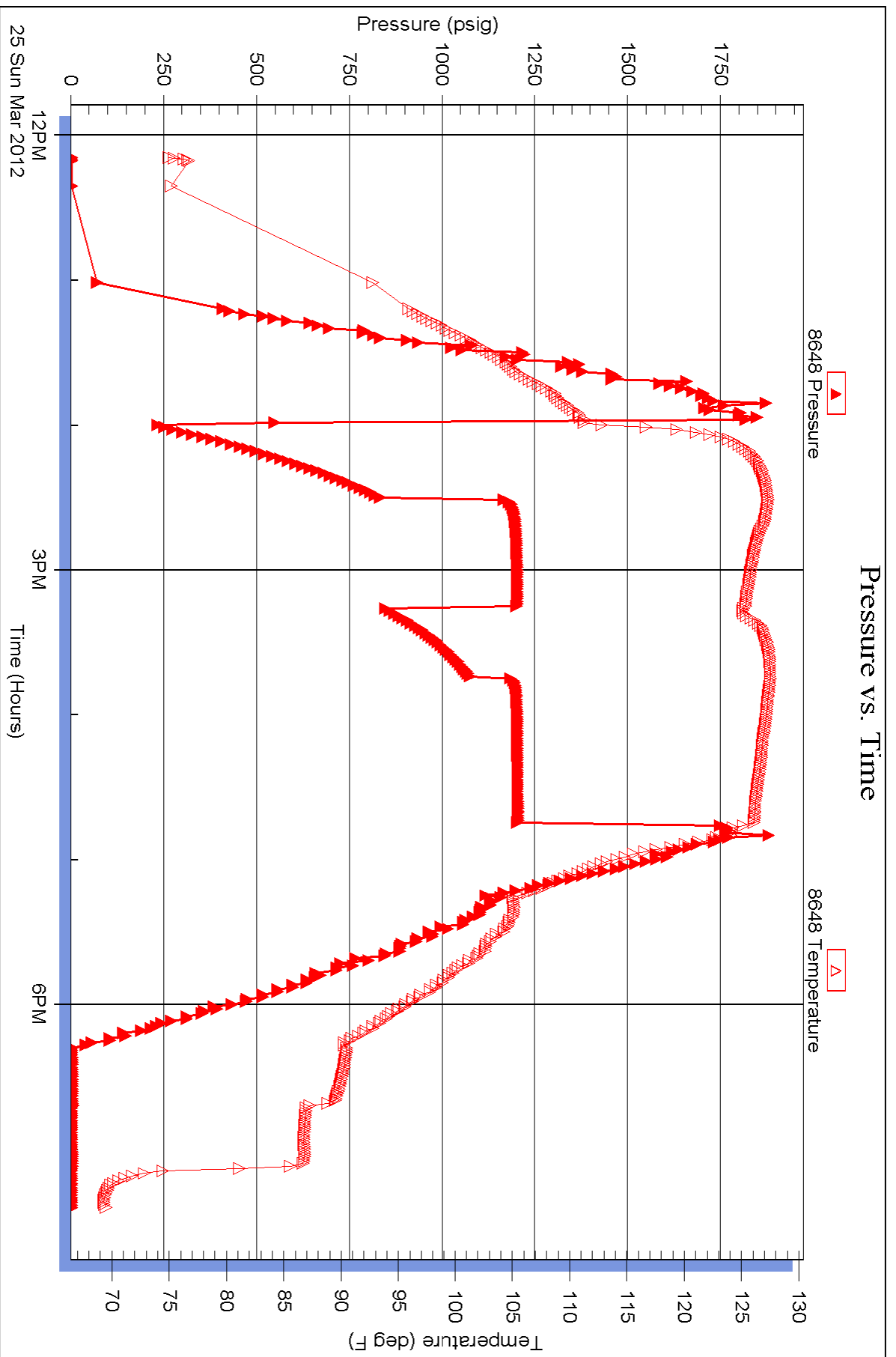
Serial #: 8648

Inside

Ritchie Exploration, Inc.

OKG - Schilitz #1

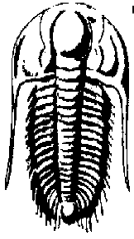
DST Test Number: 1



Triobite Testing, Inc

Ref. No: 46103

Printed: 2012.03.25 @ 21:40:53



**TRILOBITE
TESTING, INC.**

DRILL STEM TEST REPORT

Ritchie Exploration, Inc.

8-9s-30w/Sheridan-KS

8100 E. 22nd St. N #700
Wichita, KS 67278

CKG - Schiltz #1

Job Ticket: 46104

DST#: 2

ATTN: Bob Peterson

Test Start: 2012.03.26 @ 15:24:00

GENERAL INFORMATION:

Formation: **Toronto - LKC "A"**

Deviated: No Whipstock: ft (KB)

Time Tool Opened: 16:51:45

Time Test Ended: 21:44:00

Test Type: Conventional Bottom Hole (Initial)

Tester: Kevin Mack

Unit No: 43

Interval: 3972.00 ft (KB) To 4020.00 ft (KB) (TVD)

Reference Elevations: 2954.00 ft (KB)

Total Depth: 4020.00 ft (KB) (TVD)

2949.00 ft (CF)

Hole Diameter: 7.88 inches Hole Condition: Good

KB to GR/CF: 5.00 ft

Serial #: 6799 Inside

Press @ Run Depth: 81.90 psig @ 3973.00 ft (KB)

Capacity: 8000.00 psig

Start Date: 2012.03.26

End Date:

2012.03.26

Last Calib.:

2012.03.26

Start Time: 15:24:05

End Time:

21:43:59

Time On Btm:

2012.03.26 @ 16:51:00

Time Off Btm:

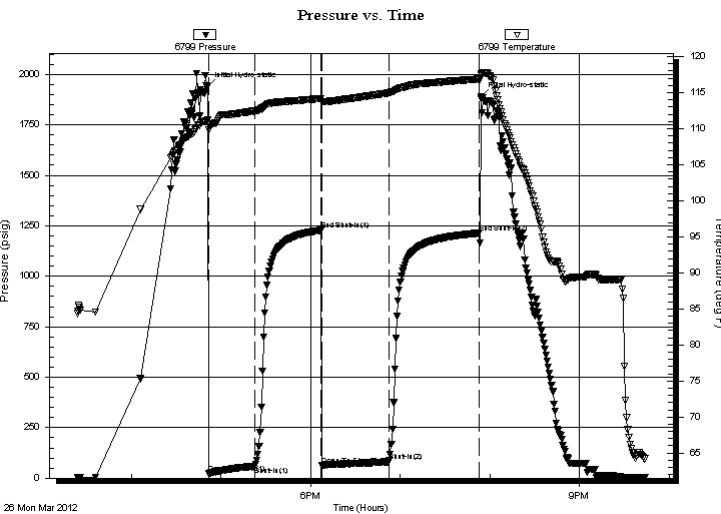
2012.03.26 @ 19:54:15

TEST COMMENT: IF- 1/4" Blow built to 6 1/4"

IS- No Return

FF- BoB in 45 min.

FS- No Return



PRESSURE SUMMARY

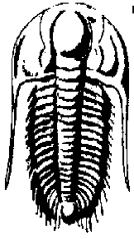
Time (Min.)	Pressure (psig)	Temp (deg F)	Annotation
0	1940.86	111.18	Initial Hydro-static
1	23.29	109.79	Open To Flow (1)
32	60.28	112.47	Shut-In(1)
76	1227.89	114.18	End Shut-In(1)
77	64.48	113.73	Open To Flow (2)
122	81.90	114.97	Shut-In(2)
182	1213.88	116.88	End Shut-In(2)
184	1890.84	117.58	Final Hydro-static

Recovery

Length (ft)	Description	Volume (bbl)
60.00	MCO 40M 60o	0.30
60.00	MCO 30M 70o	0.30
40.00	Free oil 100o	0.56
0.00	30' GIP	0.00

Gas Rates

	Choke (inches)	Pressure (psig)	Gas Rate (Mcf/d)



**TRILOBITE
TESTING, INC.**

DRILL STEM TEST REPORT

FLUID SUMMARY

Ritchie Exploration, Inc.

8-9s-30w/Sheridan-KS

8100 E. 22nd St. N #700
Wichita, KS 67278

CKG - Schiltz #1

Job Ticket: 46104

DST#: 2

ATTN: Bob Peterson

Test Start: 2012.03.26 @ 15:24:00

Mud and Cushion Information

Mud Type: Gel Chem

Cushion Type:

Oil API:

28 deg API

Mud Weight: 9.00 lb/gal

Cushion Length:

ft

Water Salinity:

ppm

Viscosity: 48.00 sec/qt

Cushion Volume:

bbbl

Water Loss: 6.40 in³

Gas Cushion Type:

Resistivity: 0.00 ohm.m

Gas Cushion Pressure:

psig

Salinity: 1000.00 ppm

Filter Cake: 1.00 inches

Recovery Information

Recovery Table

Length ft	Description	Volume bbbl
60.00	MCO 40M 60o	0.295
60.00	MCO 30M 70o	0.295
40.00	Free oil 100o	0.561
0.00	30' GIP	0.000

Total Length: 160.00 ft Total Volume: 1.151 bbl

Num Fluid Samples: 0

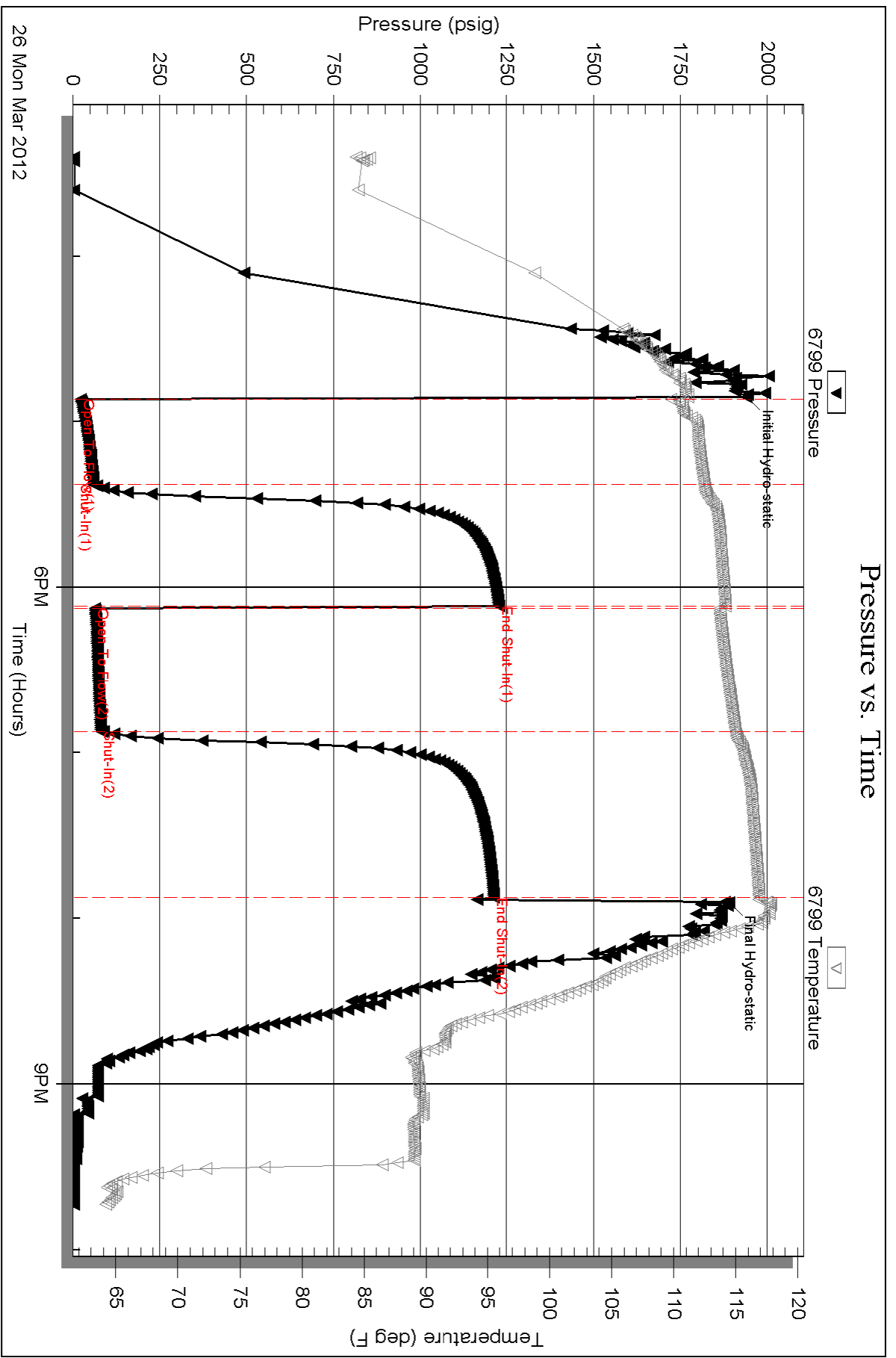
Num Gas Bombs: 0

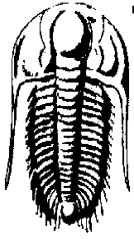
Serial #:

Laboratory Name:

Laboratory Location:

Recovery Comments: Oil API 30 @ 80 deg = 28





**TRILOBITE
TESTING, INC.**

DRILL STEM TEST REPORT

Ritchie Exploration, Inc.
8100 E. 22nd St. N #700
Wichita, KS 67278
ATTN: Bob Peterson

8-9s-30w/Sheridan-KS

CKG - Schiltz #1

Job Ticket: 46105

DST#: 3

Test Start: 2012.03.27 @ 04:12:00

GENERAL INFORMATION:

Formation: **LKC "C"**

Deviated: No Whipstock: ft (KB)

Time Tool Opened: 06:30:45

Time Test Ended: 11:51:45

Test Type: Conventional Bottom Hole (Initial)

Tester: Kevin Mack

Unit No: 43

Interval: 4027.00 ft (KB) To 4055.00 ft (KB) (TVD)

Total Depth: 4055.00 ft (KB) (TVD)

Hole Diameter: 7.88 inches Hole Condition: Good

Reference Elevations: 2954.00 ft (KB)

2949.00 ft (CF)

KB to GR/CF: 5.00 ft

Serial #: 6799

Inside

Press @ Run Depth: 360.00 psig @ 4028.00 ft (KB)

Start Date: 2012.03.27

End Date:

2012.03.27

Start Time: 04:12:05

End Time:

11:51:44

Capacity: 8000.00 psig

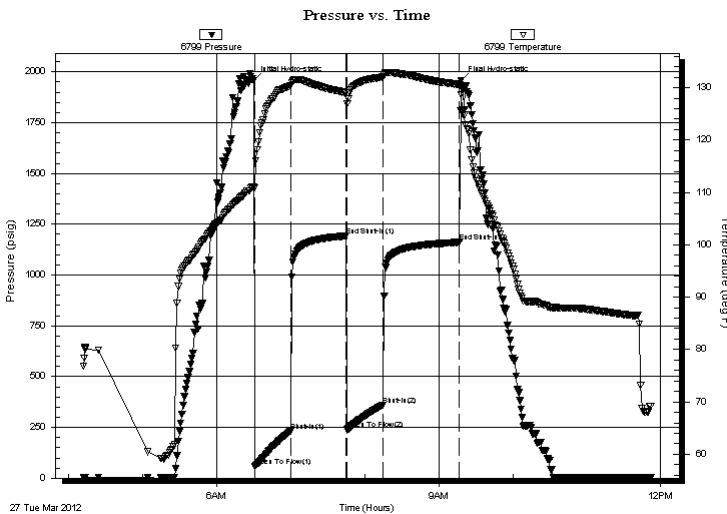
Last Calib.: 2012.03.27

Time On Btm: 2012.03.27 @ 06:29:45

Time Off Btm: 2012.03.27 @ 09:18:00

TEST COMMENT: IF- BoB in 2 min.
IS- BoB in 20 min.
FF- BoB in 4 1/2 min.
FS- BoB in 15 min.

PRESSURE SUMMARY



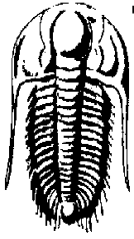
Time (Min.)	Pressure (psig)	Temp (deg F)	Annotation
0	1958.43	111.04	Initial Hydro-static
1	56.87	110.86	Open To Flow (1)
30	232.35	130.38	Shut-In (1)
75	1192.07	128.99	End Shut-In (1)
76	238.73	126.94	Open To Flow (2)
105	360.00	132.08	Shut-In (2)
167	1161.19	130.60	End Shut-In (2)
169	1958.14	128.70	Final Hydro-static

Recovery

Length (ft)	Description	Volume (bbl)
124.00	GMCO 20M 40G 40o	0.65
868.00	Clean Gassy Oil 40G 60o	12.18
0.00	Gas to surface at final shut in	0.00

Gas Rates

Choke (inches)	Pressure (psig)	Gas Rate (Mcf/d)



**TRILOBITE
TESTING, INC.**

DRILL STEM TEST REPORT

FLUID SUMMARY

Ritchie Exploration, Inc.

8-9s-30w/Sheridan-KS

8100 E. 22nd St. N #700
Wichita, KS 67278

CKG - Schiltz #1

Job Ticket: 46105

DST#: 3

ATTN: Bob Peterson

Test Start: 2012.03.27 @ 04:12:00

Mud and Cushion Information

Mud Type: Gel Chem

Cushion Type:

Oil API:

41 deg API

Mud Weight: 9.00 lb/gal

Cushion Length:

ft

Water Salinity:

ppm

Viscosity: 48.00 sec/qt

Cushion Volume:

bbbl

Water Loss: 6.40 in³

Gas Cushion Type:

Resistivity: 0.00 ohm.m

Gas Cushion Pressure:

psig

Salinity: 1000.00 ppm

Filter Cake: 1.00 inches

Recovery Information

Recovery Table

Length ft	Description	Volume bbbl
124.00	GMCO 20M 40G 40o	0.646
868.00	Clean Gassy Oil 40G 60o	12.176
0.00	Gas to surface at final shut in	0.000

Total Length: 992.00 ft Total Volume: 12.822 bbl

Num Fluid Samples: 0

Num Gas Bombs: 0

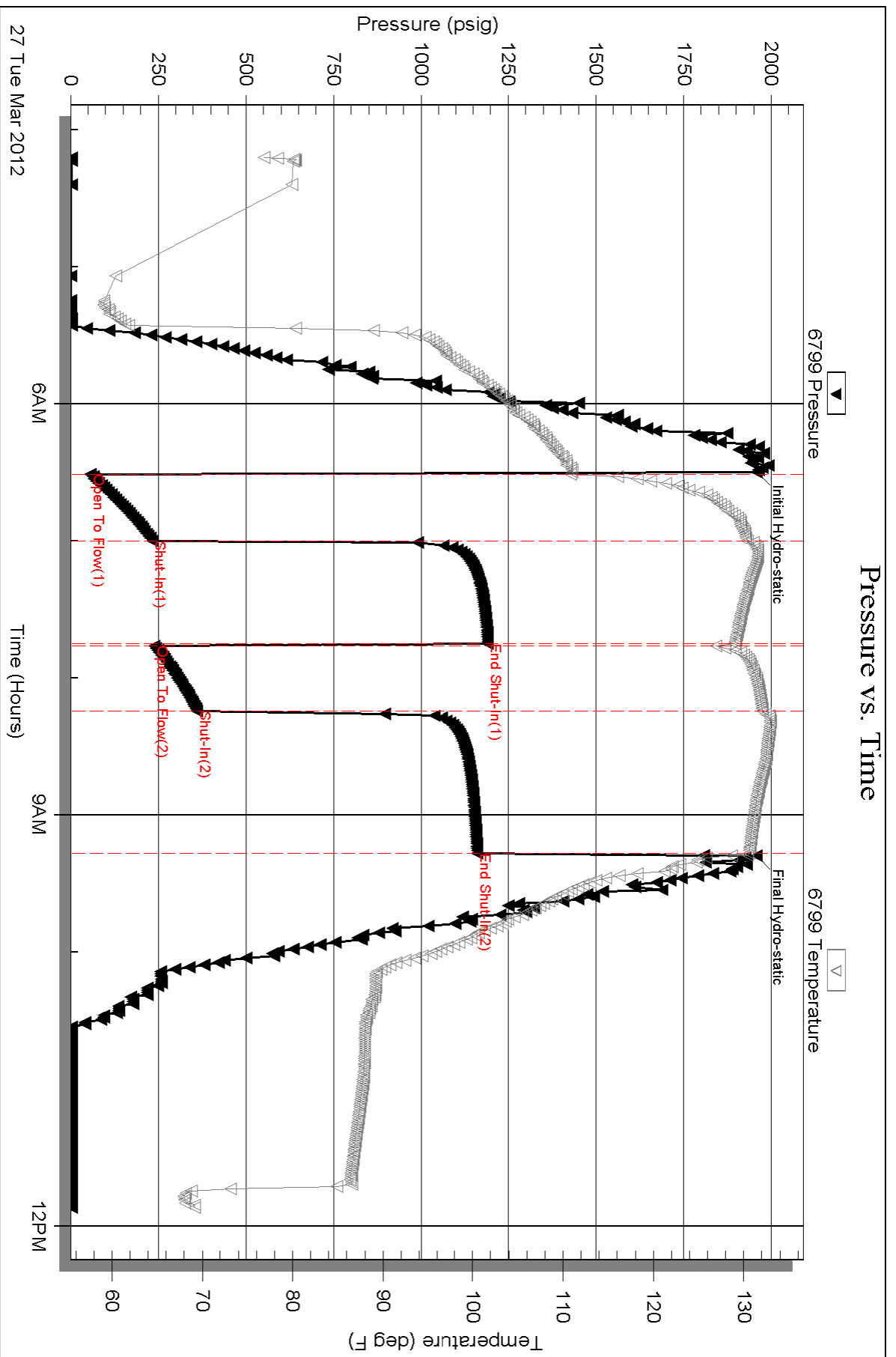
Serial #:

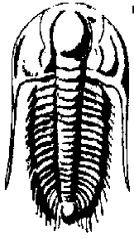
Laboratory Name:

Laboratory Location:

Recovery Comments: Gas to Surface at FS

Oil API 43 @ 80 deg. = 41





TRILOBITE TESTING, INC.

DRILL STEM TEST REPORT

Ritchie Exploration, Inc.

8-9s-30w/Sheridan-KS

8100 E. 22nd St. N #700
Wichita, KS 67278

CKG - Schiltz #1

Job Ticket: 46106

DST#: 4

ATTN: Bob Peterson

Test Start: 2012.03.27 @ 16:38:00

GENERAL INFORMATION:

Formation: **LKC "D"**

Deviated: No Whipstock: ft (KB)

Time Tool Opened: 18:19:15

Time Test Ended: 23:09:30

Test Type: Conventional Bottom Hole (Initial)

Tester: Kevin Mack

Unit No: 43

Interval: 4053.00 ft (KB) To 4063.00 ft (KB) (TVD)

Reference Elevations: 2954.00 ft (KB)

Total Depth: 4063.00 ft (KB) (TVD)

2949.00 ft (CF)

Hole Diameter: 7.88 inches Hole Condition: Good

KB to GR/CF: 5.00 ft

Serial #: 8648

Inside

Press @ Run Depth: 91.69 psig @ 4054.00 ft (KB)

Capacity: 8000.00 psig

Start Date: 2012.03.27

End Date: 2012.03.27

Last Calib.: 2012.03.27

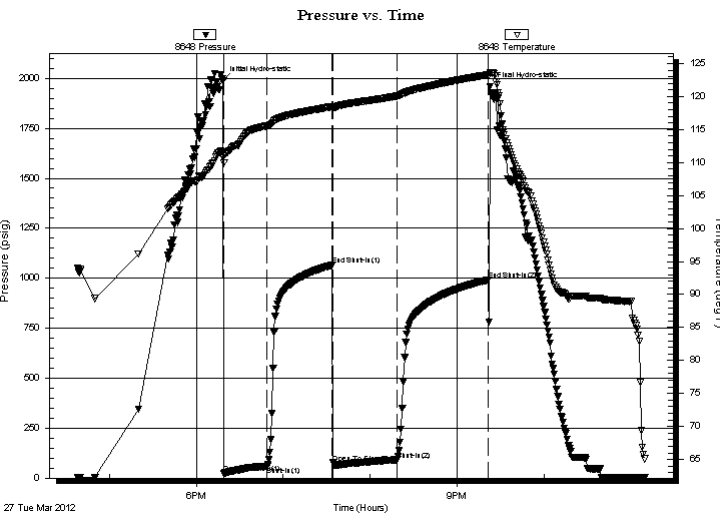
Start Time: 16:38:05

End Time: 23:09:29

Time On Btm: 2012.03.27 @ 18:18:30

Time Off Btm: 2012.03.27 @ 21:23:00

TEST COMMENT: IF- BoB in 19 min.
IS- Surface Return Started at 1 min. Built to 1". Then died back to 1/4"
FF- BoB in 19 min.
FS- Surface Return started at 1 min. Built to 2". Then died back to 1 3/4"



PRESSURE SUMMARY

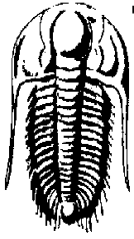
Time (Min.)	Pressure (psig)	Temp (deg F)	Annotation
0	1988.87	110.98	Initial Hydro-static
1	21.88	109.94	Open To Flow (1)
31	60.71	115.53	Shut-In(1)
75	1064.92	118.46	End Shut-In(1)
76	76.00	118.16	Open To Flow (2)
120	91.69	120.08	Shut-In(2)
183	992.24	123.30	End Shut-In(2)
185	1960.12	123.66	Final Hydro-static

Recovery

Length (ft)	Description	Volume (bbl)
60.00	OCM 50M 50o	0.30
142.00	Free oil 100o	1.45
0.00	310' GIP	0.00

Gas Rates

	Choke (inches)	Pressure (psig)	Gas Rate (Mcf/d)



**TRILOBITE
TESTING, INC.**

DRILL STEM TEST REPORT

FLUID SUMMARY

Ritchie Exploration, Inc.

8-9s-30w/Sheridan-KS

8100 E. 22nd St. N #700
Wichita, KS 67278

CKG - Schiltz #1

Job Ticket: 46106

DST#: 4

ATTN: Bob Peterson

Test Start: 2012.03.27 @ 16:38:00

Mud and Cushion Information

Mud Type: Gel Chem

Cushion Type:

Oil API:

35 deg API

Mud Weight: 9.00 lb/gal

Cushion Length:

ft

Water Salinity:

ppm

Viscosity: 62.00 sec/qt

Cushion Volume:

bbbl

Water Loss: 5.80 in³

Gas Cushion Type:

Resistivity: 0.00 ohm.m

Gas Cushion Pressure:

psig

Salinity: 900.00 ppm

Filter Cake: 1.00 inches

Recovery Information

Recovery Table

Length ft	Description	Volume bbl
60.00	OCM 50M 50o	0.295
142.00	Free oil 100o	1.445
0.00	310' GIP	0.000

Total Length: 202.00 ft Total Volume: 1.740 bbl

Num Fluid Samples: 0

Num Gas Bombs: 0

Serial #:

Laboratory Name:

Laboratory Location:

Recovery Comments: Oil API 38 @ 90 = 35

Serial #: 8648

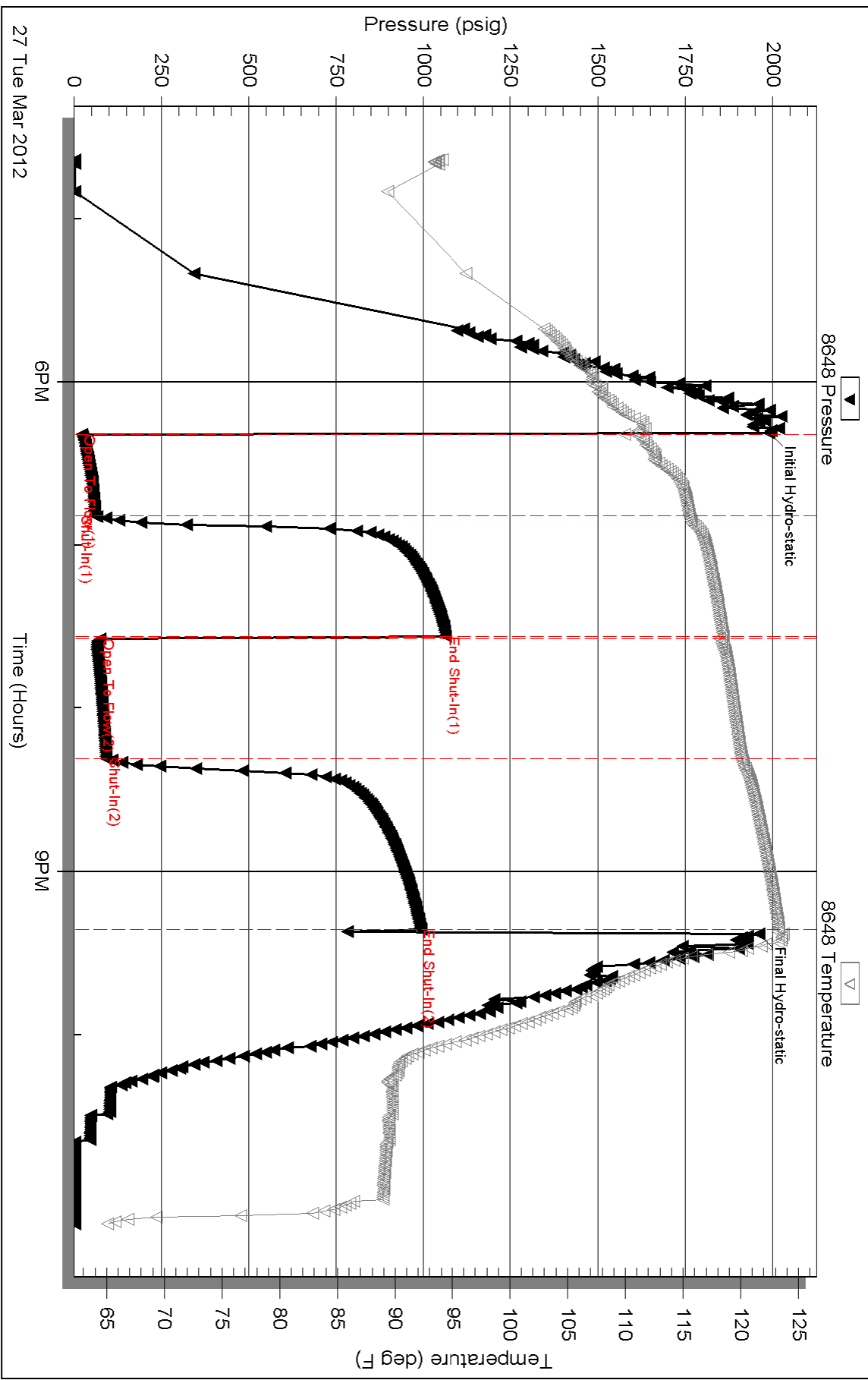
Inside

Ritchie Exploration, Inc.

OKG - Schilitz #1

DST Test Number: 4

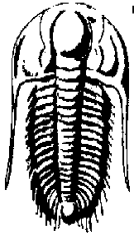
Pressure vs. Time



Triobite Testing, Inc

Ref. No: 46106

Printed: 2012.03.28 @ 07:43:19



**TRILOBITE
TESTING, INC.**

DRILL STEM TEST REPORT

Ritchie Exploration, Inc.

8-9s-30w/Sheridan-KS

8100 E. 22nd St. N #700
Wichita, KS 67278

CKG - Schiltz #1

Job Ticket: 46107

DST#: 5

ATTN: Bob Peterson

Test Start: 2012.03.28 @ 05:55:00

GENERAL INFORMATION:

Formation: **LKC "E-F"**

Deviated: No Whipstock: ft (KB)

Time Tool Opened: 07:57:15

Time Test Ended: 13:01:00

Test Type: Conventional Bottom Hole (Initial)

Tester: Kevin Mack

Unit No: 43

Interval: 4076.00 ft (KB) To 4100.00 ft (KB) (TVD)

Reference Elevations: 2954.00 ft (KB)

Total Depth: 4100.00 ft (KB) (TVD)

2949.00 ft (CF)

Hole Diameter: 7.88 inches Hole Condition: Good

KB to GR/CF: 5.00 ft

Serial #: 6799

Inside

Press @ Run Depth: 203.40 psig @ 4077.00 ft (KB)

Capacity: 8000.00 psig

Start Date: 2012.03.28

End Date:

2012.03.28

Last Calib.:

2012.03.28

Start Time: 05:55:05

End Time:

13:00:59

Time On Btm:

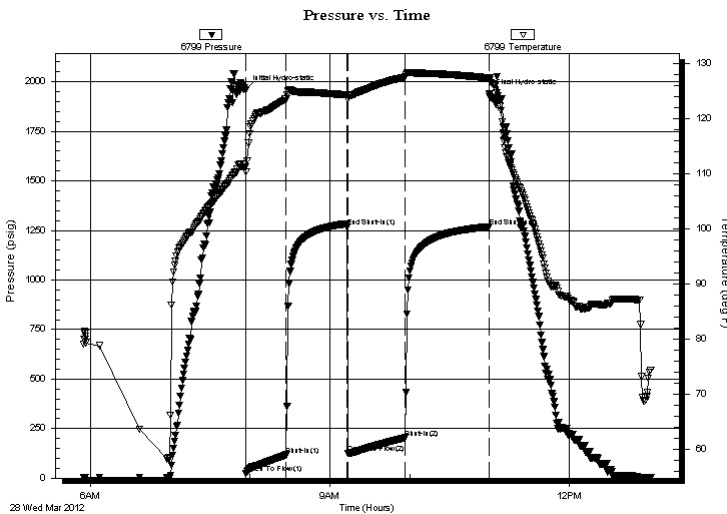
2012.03.28 @ 07:57:00

Time Off Btm:

2012.03.28 @ 11:00:00

TEST COMMENT: IF- BoB in 7 min.
IS- Return Built to 7"
FF- BoB in 12 min.
FS- Return Built to 7"

PRESSURE SUMMARY



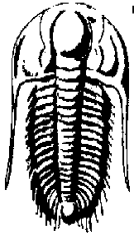
Time (Min.)	Pressure (psig)	Temp (deg F)	Annotation
0	1958.77	111.19	Initial Hydro-static
1	25.59	110.34	Open To Flow (1)
31	117.20	123.50	Shut-In(1)
76	1266.00	124.28	End Shut-In(1)
77	125.28	123.39	Open To Flow (2)
120	203.40	127.51	Shut-In(2)
183	1268.72	127.36	End Shut-In(2)
183	1938.40	127.35	Final Hydro-static

Recovery

Length (ft)	Description	Volume (bbl)
60.00	OCMW 10o 10M 80W	0.30
122.00	OCWM 10o 5W 85M	1.16
310.00	Free oil 80o 20G	4.35
0.00	550' GIP	0.00

Gas Rates

	Choke (inches)	Pressure (psig)	Gas Rate (Mcf/d)



**TRILOBITE
TESTING, INC.**

DRILL STEM TEST REPORT

FLUID SUMMARY

Ritchie Exploration, Inc.

8-9s-30w/Sheridan-KS

8100 E. 22nd St. N #700
Wichita, KS 67278

CKG - Schiltz #1

Job Ticket: 46107

DST#: 5

ATTN: Bob Peterson

Test Start: 2012.03.28 @ 05:55:00

Mud and Cushion Information

Mud Type: Gel Chem

Cushion Type:

Oil API:

35 deg API

Mud Weight: 9.00 lb/gal

Cushion Length:

ft

Water Salinity:

25000 ppm

Viscosity: 62.00 sec/qt

Cushion Volume:

bbbl

Water Loss: 5.80 in³

Gas Cushion Type:

Resistivity: 0.00 ohm.m

Gas Cushion Pressure:

psig

Salinity: 900.00 ppm

Filter Cake: 1.00 inches

Recovery Information

Recovery Table

Length ft	Description	Volume bbbl
60.00	OCMW 10o 10M 80W	0.295
122.00	OCWM 10o 5W 85M	1.165
310.00	Free oil 80o 20G	4.348
0.00	550' GIP	0.000

Total Length: 492.00 ft Total Volume: 5.808 bbl

Num Fluid Samples: 0

Num Gas Bombs: 0

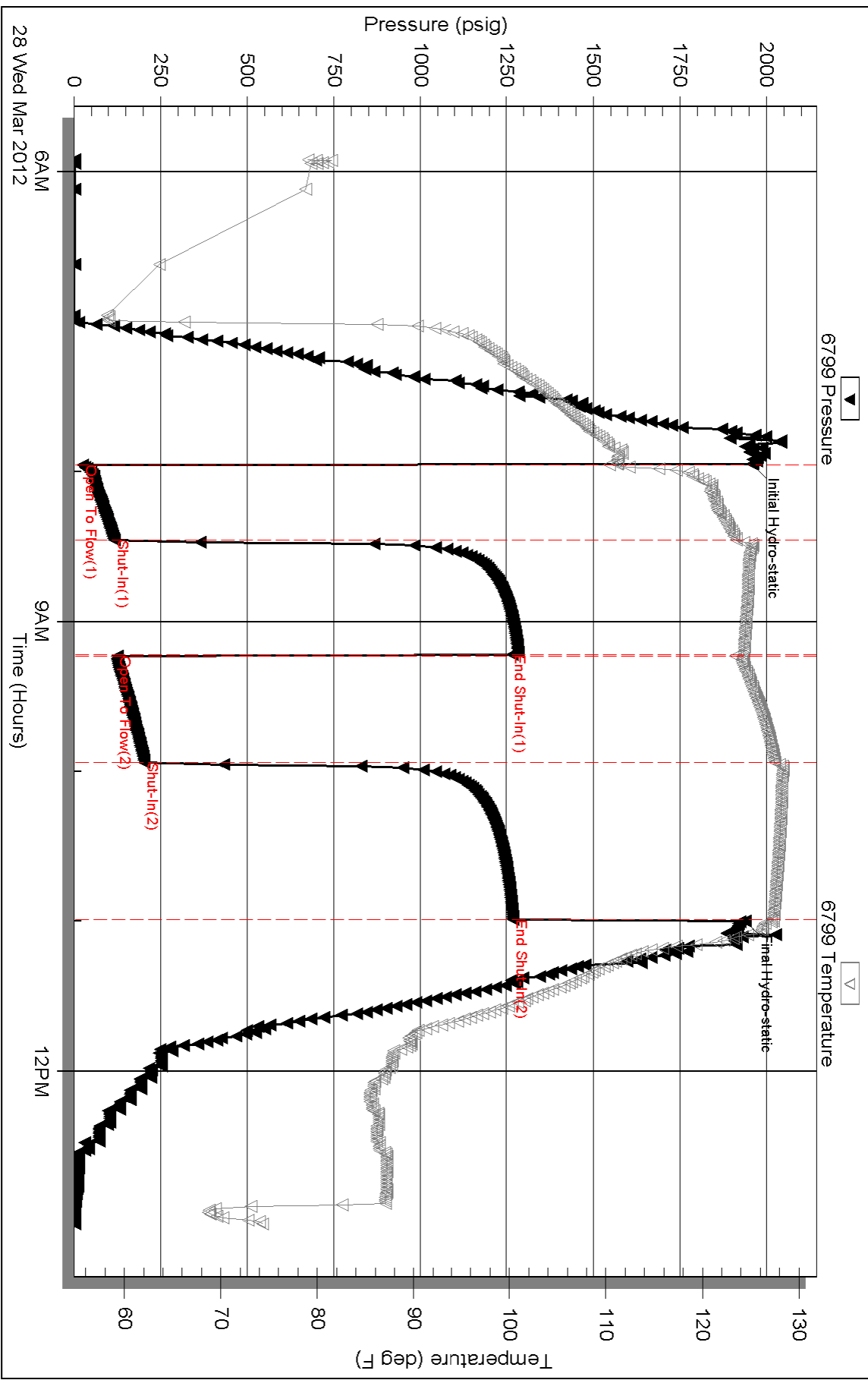
Serial #:

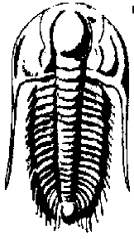
Laboratory Name:

Laboratory Location:

Recovery Comments: Oil API 38 @ 90 deg. = 35
RW .27 @ 72 = 25000ppm

Pressure vs. Time





**TRILOBITE
TESTING, INC.**

DRILL STEM TEST REPORT

Ritchie Exploration, Inc.
8100 E. 22nd St. N #700
Wichita, KS 67278
ATTN: Bob Peterson

8-9s-30w/Sheridan-KS

CKG - Schiltz #1

Job Ticket: 46108

DST#: 6

Test Start: 2012.03.28 @ 20:11:00

GENERAL INFORMATION:

Formation: **LKC "G-H"**
 Deviated: No Whipstock: ft (KB)
 Time Tool Opened: 22:06:30
 Time Test Ended: 03:19:00
 Interval: **4126.00 ft (KB) To 4160.00 ft (KB) (TVD)**
 Total Depth: 4160.00 ft (KB) (TVD)
 Hole Diameter: 7.88 inches Hole Condition: Good
 Test Type: Conventional Bottom Hole (Initial)
 Tester: Kevin Mack
 Unit No: 43
 Reference Elevations: 2954.00 ft (KB)
 2949.00 ft (CF)
 KB to GR/CF: 5.00 ft

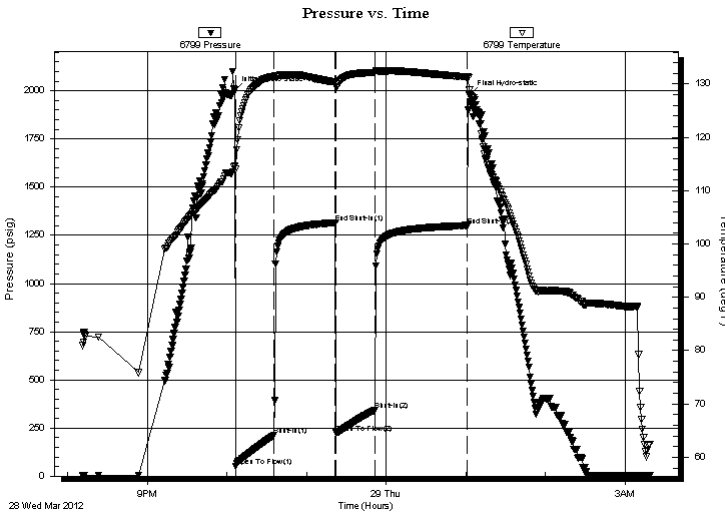
Serial #: 6799

Inside

Press @ Run Depth: 342.81 psig @ 4127.00 ft (KB) Capacity: 8000.00 psig
 Start Date: 2012.03.28 End Date: 2012.03.29 Last Calib.: 2012.03.29
 Start Time: 20:11:05 End Time: 03:18:59 Time On Btm: 2012.03.28 @ 22:05:45
 Time Off Btm: 2012.03.29 @ 01:02:45

TEST COMMENT: IF- BoB in 3 1/2 min.
 IS- BoB in 18 min.
 FF- BoB in 7 min.
 FS- BoB in 13 min.

PRESSURE SUMMARY



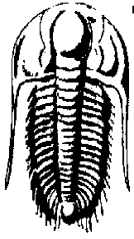
Time (Min.)	Pressure (psig)	Temp (deg F)	Annotation
0	2003.80	114.58	Initial Hydro-static
1	51.61	114.00	Open To Flow (1)
30	211.64	131.46	Shut-In(1)
76	1315.45	130.41	End Shut-In(1)
77	224.88	129.51	Open To Flow (2)
106	342.81	132.19	Shut-In(2)
176	1301.11	131.31	End Shut-In(2)
177	1978.52	128.86	Final Hydro-static

Recovery

Length (ft)	Description	Volume (bbl)
182.00	OSMW 80W 20M (oil spots)	1.46
124.00	OSMW 50W 50M (oil spots)	1.74
496.00	Clean Gassy Oil 30G 70o	6.96
0.00	Gas to surface at FS	0.00

Gas Rates

	Choke (inches)	Pressure (psig)	Gas Rate (Mcf/d)



**TRILOBITE
TESTING, INC.**

DRILL STEM TEST REPORT

FLUID SUMMARY

Ritchie Exploration, Inc.

8-9s-30w/Sheridan-KS

8100 E. 22nd St. N #700
Wichita, KS 67278

CKG - Schiltz #1

Job Ticket: 46108

DST#: 6

ATTN: Bob Peterson

Test Start: 2012.03.28 @ 20:11:00

Mud and Cushion Information

Mud Type: Gel Chem

Cushion Type:

Oil API:

35 deg API

Mud Weight: 9.00 lb/gal

Cushion Length:

ft

Water Salinity:

27000 ppm

Viscosity: 53.00 sec/qt

Cushion Volume:

bbbl

Water Loss: 7.20 in³

Gas Cushion Type:

Resistivity: 0.00 ohm.m

Gas Cushion Pressure:

psig

Salinity: 1000.00 ppm

Filter Cake: 1.00 inches

Recovery Information

Recovery Table

Length ft	Description	Volume bbbl
182.00	OSMW 80W 20M (oil spots)	1.460
124.00	OSMW 50W 50M (oil spots)	1.739
496.00	Clean Gassy Oil 30G 70o	6.958
0.00	Gas to surface at FS	0.000

Total Length: 802.00 ft Total Volume: 10.157 bbl

Num Fluid Samples: 0

Num Gas Bombs: 0

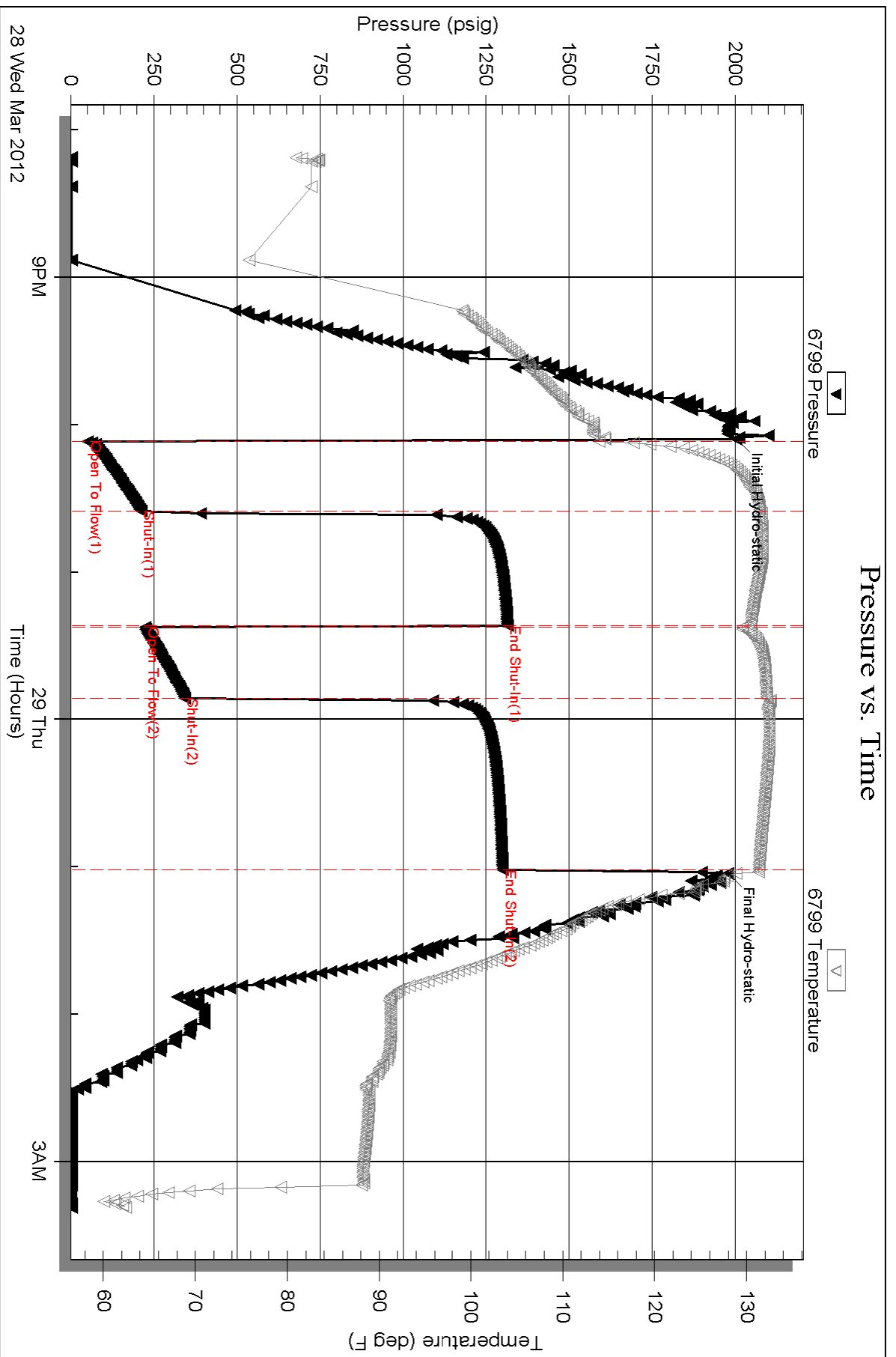
Serial #:

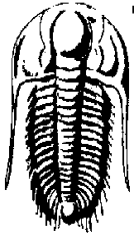
Laboratory Name:

Laboratory Location:

Recovery Comments: Oil API 37 @ 80 deg = 35

RW .3 @ 61 deg= 27000ppm





TRILOBITE TESTING, INC.

DRILL STEM TEST REPORT

Ritchie Exploration, Inc.

8-9s-30w/Sheridan-KS

8100 E. 22nd St. N #700
Wichita, KS 67278

CKG - Schiltz #1

Job Ticket: 46109

DST#: 7

ATTN: Bob Peterson

Test Start: 2012.03.29 @ 11:13:00

GENERAL INFORMATION:

Formation: **LKC "J"**
 Deviated: No Whipstock: ft (KB)
 Test Type: Conventional Bottom Hole (Initial)
 Time Tool Opened: 13:34:45
 Tester: Kevin Mack
 Time Test Ended: 18:03:30
 Unit No: 43
 Interval: **4186.00 ft (KB) To 4210.00 ft (KB) (TVD)**
 Reference Elevations: 2954.00 ft (KB)
 Total Depth: 4210.00 ft (KB) (TVD)
 2949.00 ft (CF)
 Hole Diameter: 7.88 inches
 Hole Condition: Good
 KB to GR/CF: 5.00 ft

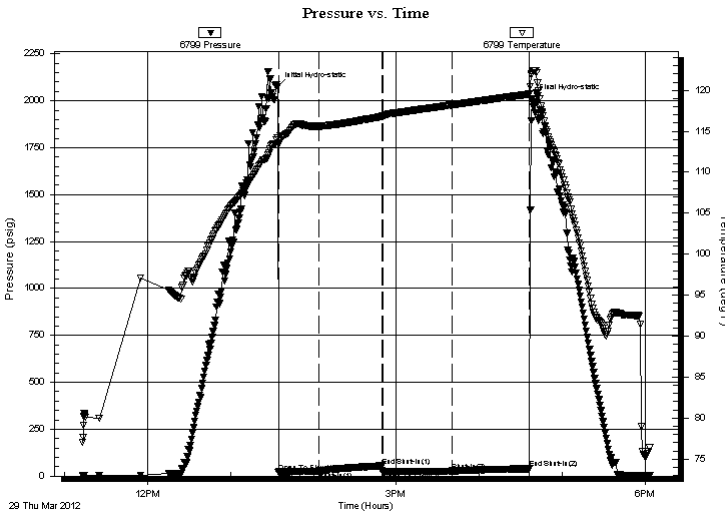
Serial #: 6799

Inside

Press @ Run Depth: 26.99 psig @ 4187.00 ft (KB) Capacity: 8000.00 psig
 Start Date: 2012.03.29 End Date: 2012.03.29 Last Calib.: 2012.03.29
 Start Time: 11:13:05 End Time: 18:03:29 Time On Btm: 2012.03.29 @ 13:34:00
 Time Off Btm: 2012.03.29 @ 16:38:00

TEST COMMENT: IF- Surface blow built to 3 1/2"
 IS- No Return
 FF- Surface Blow built to 1"
 FS- No Return

PRESSURE SUMMARY



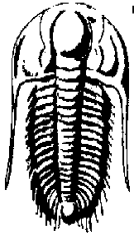
Time (Min.)	Pressure (psig)	Temp (deg F)	Annotation
0	2077.09	114.19	Initial Hydro-static
1	20.60	113.50	Open To Flow (1)
30	25.73	115.61	Shut-In(1)
76	54.80	116.80	End Shut-In(1)
76	21.05	116.84	Open To Flow (2)
126	26.99	118.21	Shut-In(2)
183	39.67	119.53	End Shut-In(2)
184	2009.10	122.01	Final Hydro-static

Recovery

Length (ft)	Description	Volume (bbl)
15.00	OCM 60M 40o	0.07

Gas Rates

Choke (inches)	Pressure (psig)	Gas Rate (Mcf/d)



**TRILOBITE
TESTING, INC.**

DRILL STEM TEST REPORT

FLUID SUMMARY

Ritchie Exploration, Inc.

8-9s-30w/Sheridan-KS

8100 E. 22nd St. N #700
Wichita, KS 67278

CKG - Schiltz #1

Job Ticket: 46109

DST#: 7

ATTN: Bob Peterson

Test Start: 2012.03.29 @ 11:13:00

Mud and Cushion Information

Mud Type: Gel Chem

Cushion Type:

Oil API:

deg API

Mud Weight: 9.00 lb/gal

Cushion Length:

ft

Water Salinity:

ppm

Viscosity: 53.00 sec/qt

Cushion Volume:

bbbl

Water Loss: 7.19 in³

Gas Cushion Type:

Resistivity: 0.00 ohm.m

Gas Cushion Pressure:

psig

Salinity: 1000.00 ppm

Filter Cake: 1.00 inches

Recovery Information

Recovery Table

Length ft	Description	Volume bbl
15.00	OCM 60M 40o	0.074

Total Length: 15.00 ft Total Volume: 0.074 bbl

Num Fluid Samples: 0

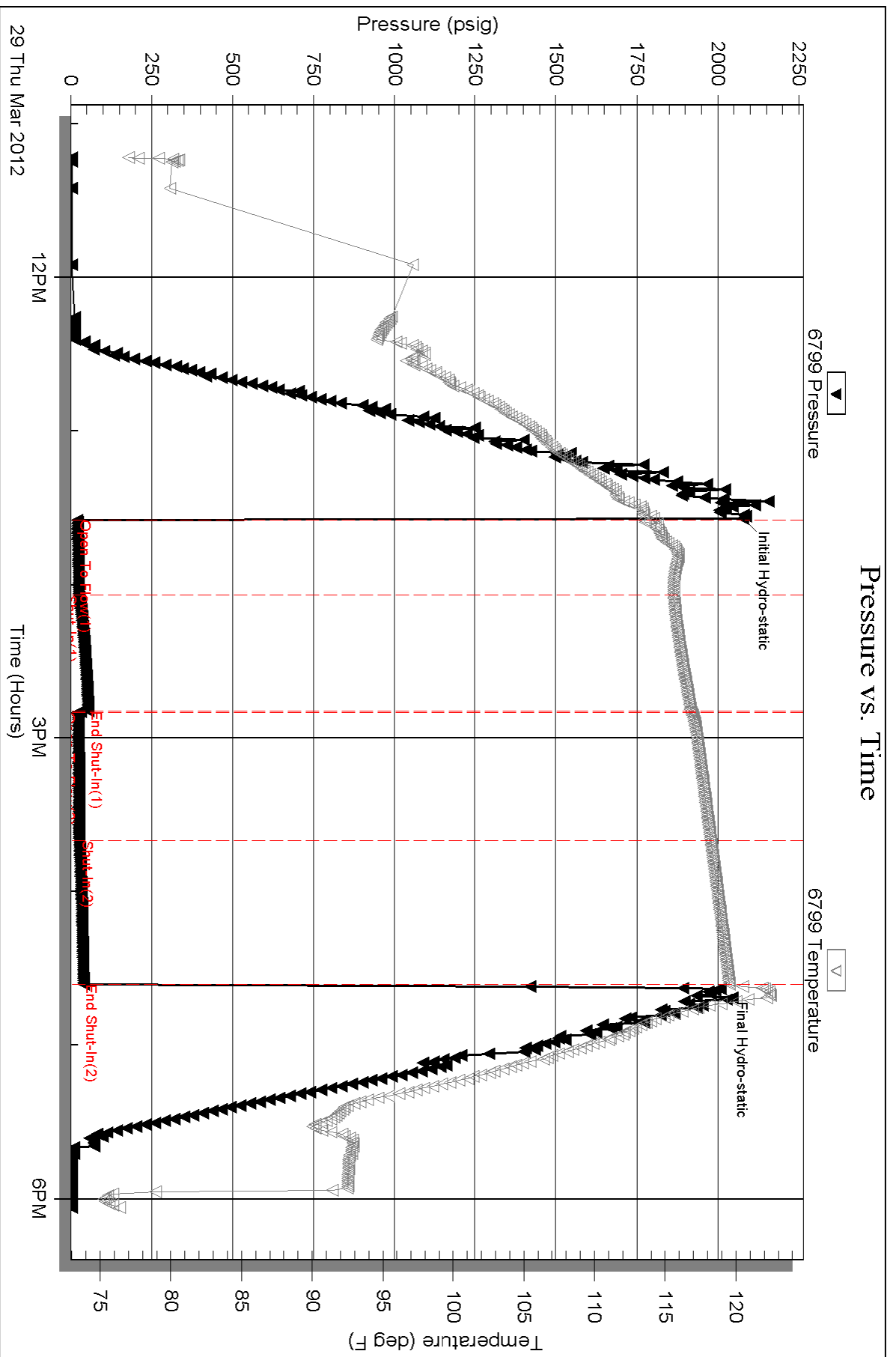
Num Gas Bombs: 0

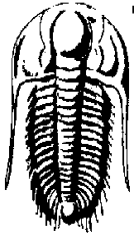
Serial #:

Laboratory Name:

Laboratory Location:

Recovery Comments:





**TRILOBITE
TESTING, INC.**

DRILL STEM TEST REPORT

Ritchie Exploration, Inc.
8100 E. 22nd St. N #700
Wichita, KS 67278
ATTN: Bob Peterson

8-9s-30w/Sheridan-KS

CKG - Schiltz #1

Job Ticket: 46110

DST#: 8

Test Start: 2012.03.30 @ 05:18:00

GENERAL INFORMATION:

Formation: **LKC "L"**

Deviated: No Whipstock: ft (KB)

Time Tool Opened: 07:01:30

Time Test Ended: 11:00:00

Test Type: Conventional Bottom Hole (Initial)

Tester: Kevin Mack

Unit No: 43

Interval: 4235.00 ft (KB) To 4265.00 ft (KB) (TVD)

Total Depth: 4265.00 ft (KB) (TVD)

Hole Diameter: 7.88 inches Hole Condition: Good

Reference Elevations: 2954.00 ft (KB)

2949.00 ft (CF)

KB to GR/CF: 5.00 ft

Serial #: 6799 Inside

Press @ Run Depth: 19.73 psig @ 4236.00 ft (KB)

Start Date: 2012.03.30

End Date:

2012.03.30

Start Time: 05:18:05

End Time:

10:59:59

Capacity: 8000.00 psig

Last Calib.: 2012.03.30

Time On Btm: 2012.03.30 @ 07:00:45

Time Off Btm: 2012.03.30 @ 09:38:30

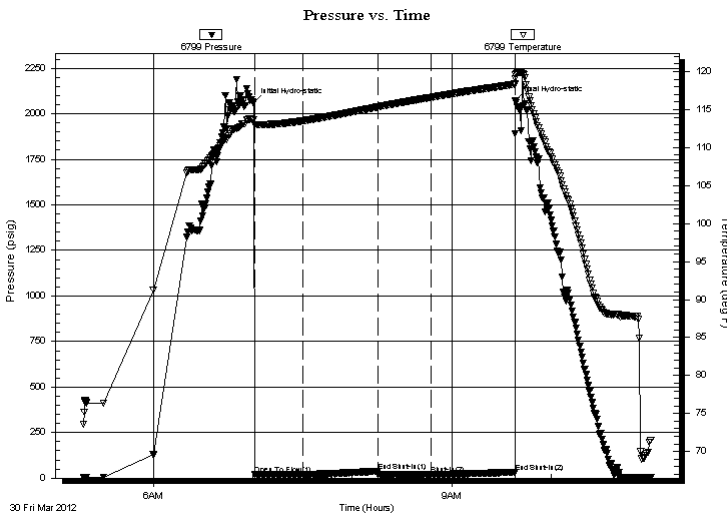
TEST COMMENT: IF- 1/4" Blow did not build or die.

IS- No Return

FF- No Blow

FS- No Return

PRESSURE SUMMARY



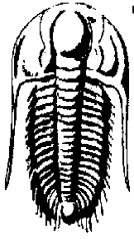
Time (Min.)	Pressure (psig)	Temp (deg F)	Annotation
0	2060.45	113.69	Initial Hydro-static
1	19.49	113.04	Open To Flow (1)
30	19.86	113.51	Shut-In(1)
75	38.61	115.34	End Shut-In(1)
75	19.46	115.35	Open To Flow (2)
107	19.73	116.61	Shut-In(2)
158	32.41	118.33	End Shut-In(2)
158	2072.69	119.52	Final Hydro-static

Recovery

Length (ft)	Description	Volume (bbl)
5.00	OSM 100M (oil spots)	0.02

Gas Rates

Choke (inches)	Pressure (psig)	Gas Rate (Mcf/d)



**TRILOBITE
TESTING, INC.**

DRILL STEM TEST REPORT

FLUID SUMMARY

Ritchie Exploration, Inc.

8-9s-30w/Sheridan-KS

8100 E. 22nd St. N #700
Wichita, KS 67278

CKG - Schiltz #1

Job Ticket: 46110

DST#: 8

ATTN: Bob Peterson

Test Start: 2012.03.30 @ 05:18:00

Mud and Cushion Information

Mud Type: Gel Chem

Cushion Type:

Oil API:

deg API

Mud Weight: 9.00 lb/gal

Cushion Length:

ft

Water Salinity:

ppm

Viscosity: 60.00 sec/qt

Cushion Volume:

bbbl

Water Loss: 6.79 in³

Gas Cushion Type:

Resistivity: 0.00 ohm.m

Gas Cushion Pressure:

psig

Salinity: 1000.00 ppm

Filter Cake: 1.00 inches

Recovery Information

Recovery Table

Length ft	Description	Volume bbl
5.00	OSM 100M (oil spots)	0.025

Total Length: 5.00 ft Total Volume: 0.025 bbl

Num Fluid Samples: 0

Num Gas Bombs: 0

Serial #:

Laboratory Name:

Laboratory Location:

Recovery Comments:

Serial #: 6799

Inside

Ritchie Exploration, Inc.

OKG - Schilitz #1

DST Test Number: 8

