

KANSAS DRILLERS LOG

S. 21 T. 9 R. 31 ^{EX} W

API No. 15 — 193 — 20,094
County Number

Loc. C SW NW

County Thomas County

Operator
Abercrombie Drilling, Inc.

Address
801 Union Center, Wichita, Kansas 67202

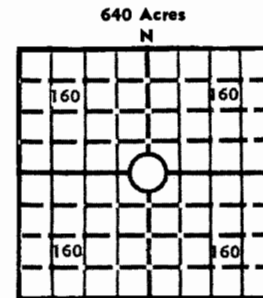
Well No. 1 Lease Name ROBBEN

Footage Location
feet from (N) (S) line feet from (E) (W) line

Principal Contractor Abercrombie Drilling, Inc. Geologist

Spud Date October 26, 1976 Total Depth 4700' P.B.T.D.

Date Completed November 4, 1976 Oil Purchaser



640 Acres
N
Locate well correctly
Elev.: Gr. 2984'

DF 2987' KB 2989'

CASING RECORD

Report of all strings set— surface, intermediate, production, etc.

Purpose of string	Size hole drilled	Size casing set (in O.D.)	Weight lbs/ft.	Setting depth	Type cement	Sacks	Type and percent additives
Surface	12 1/4"	8 5/8"	24#	250.50'	Common	175	2% gel, 3% Ca.Cl.

MAR 17 1977

LINER RECORD

PERFORATION RECORD

Top, ft.	Bottom, ft.	Sacks cement	Shots per ft.	Size & type	Depth interval

TUBING RECORD

Size	Setting depth	Packer set at

ACID, FRACTURE, SHOT, CEMENT SQUEEZE RECORD

Amount and kind of material used	Depth interval treated

INITIAL PRODUCTION

Date of first production		Producing method (flowing, pumping, gas lift, etc.)			
RATE OF PRODUCTION PER 24 HOURS		Oil bbls.	Gas MCF	Water bbls.	Gas-oil ratio CFPB
Disposition of gas (vented, used on lease or sold)				Producing interval (s)	

INSTRUCTIONS: As provided in KCC Rule 82-2-125, within 90 days after completion of a well, one completed copy of this Drillers Log shall be transmitted to the State Geological Survey of Kansas, 4150 Monroe Street, Wichita, Kansas 67209. Copies of this form are available from the Conservation Division, State Corporation Commission, 3830 So. Meridian (P.O. Box 17027), Wichita, Kansas 66217. Phone AC 316-522-2206. If confidential custody is desired, please note Rule 82-2-125. Drillers Logs will be on open file in the Oil and Gas Division, State Geological Survey of Kansas, Lawrence, Kansas 66044.

Operator		DESIGNATE TYPE OF COMP.: OIL, GAS, DRY HOLE, SWDW, ETC.:
Well No. 1	Lease Name ROBBEN	Dry Hole
S 21 T 9S R 31 W C SW NW		

WELL LOG

Show all important zones of porosity and contents thereof; cored intervals, and all drill-stem tests, including depth interval tested, cushion used, time tool open, flowing and shut-in pressures, and recoveries.

SHOW GEOLOGICAL MARKERS, LOGS RUN, OR OTHER DESCRIPTIVE INFORMATION.

FORMATION DESCRIPTION, CONTENTS, ETC.	TOP	BOTTOM	NAME	DEPTH
Sand & Shale	0	232	ELECTRIC LOG TOPS:	
Shale & Sand	232	2075		
Sand & Shale	2075	2576	Anydrite	2578' (+411)
Anhydrite	2576	2610	Heebner	3991' (-1002)
Shale	2610	2884	Toronto	4013' (-1024)
Sand & Shale	2884	2972	Lansing	4033' (-1044)
Shale & Lime	2072	3630	Stark Shale	4246' (-1257)
Lime & Shale	3630	4084	B/KC	4303' (-1314)
Shale & Lime	4084	4173	Marmaton	4333' (-1344)
Lime	4173	4394	Fort Scott	4490' (-1501)
Shale & Lime	4394	4509	Cherokee Shale	4519' (-1530)
Lime	4509	4700	Sandy Congl.	4578' (-1589)
Rotary Total Depth		4700	E. Miss.	4591' (-1602)
			S. Miss.	4629' (-1640)
DST #1 (3998-4084') 30", 30", 60", 60" Strong blow. Rec. 2020' muddy salt water. IFP 136-591#, FFP 600-962#, IBHP 1307#, FBHP 1299#. Temp. 112°.			RTD	4700' (-1711)
			ELTL	4702' (-1713)

USE ADDITIONAL SHEETS, IF NECESSARY, TO COMPLETE WELL RECORD.

Date Received	<p align="center"><i>Jack L. Partridge</i> Jack L. Partridge <small>Signature</small> Assistant Secretary-Treasurer <small>Title</small> November 9, 1976 <small>Date</small></p>
---------------	--

69505