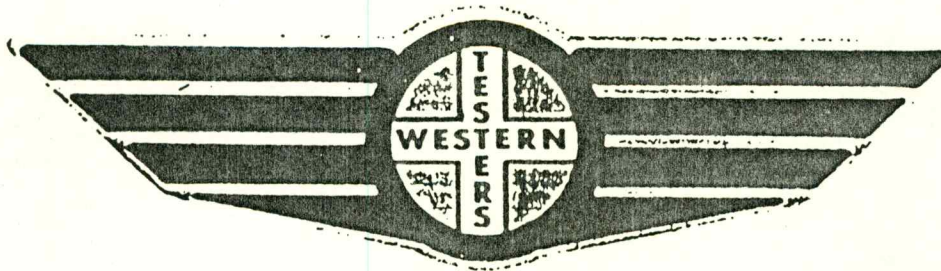


FORMATION TEST REPORT

RECEIVED

JAN 22 '88

GREAT BEND
Division Office



Home Office:

P.O. Box 1599

Wichita, Kansas 67201

Phone (316) 262-5861

COMPANY PICKRELL DRUG & BRUCE ANDERSON PEASE & WELL NO#1-B STEINLE

SEC. 18 TWP. 9S RGE32W TEST NO. 1 DATE 12/28/87

NE-S E

WESTERN TESTING CO. INC.
SUBSURFACE PRESSURE SURVEY

DATE : 12-28-87 TICKET : 11999
CUSTOMER : PICKRELL DRLG CO INC & BRUCE ANDERSON
WELL : #1-B TEST: 1 LEASE : STEINLE
ELEVATION : 3056 KB GEOLOGIST : G. MUELLER
SECTION : 18 FORMATION : LANSING
RANGE : 32W COUNTY : THOMAS TOWNSHIP : 9S
GAUGE SN# : 3849 RANGE : 4200 STATE : KANSAS
CLOCK : 12

INTERVAL FROM : 4207 TO : 4265 TOTAL DEPTH : 4265
DEPTH OF SELECTIVE ZONE :
PACKER DEPTH : 4207 SIZE : 6.75
PACKER DEPTH : SIZE :
PACKER DEPTH : SIZE :
PACKER DEPTH : SIZE :

DRILLING CON. : PICKRELL RIG #10
MUD TYPE : CHEMICAL VISCOSITY : 45
WEIGHT : 9.2 WATER LOSS (CC) : 15.4
CHLORIDES (PPM) : 1000
JARS-MAKE : WTC SERIAL NUMBER : 403
DID WELL FLOW ? : NO REVERSED OUT ? : NO

DRILL COLLAR LENGTH : 156 FT I.D. inch : 2.20
WEIGHT PIPE LENGTH : 0 FT I.D. inch : 0.00
DRILL PIPE LENGTH : 4027 FT I.D. inch : 3.80
TEST TOOL LENGTH : 24 FT TOOL SIZE : 5.50
ANCHOR LENGTH : 58 FT ANCHOR SIZE : 5.50
SURFACE CHOKE SIZE : .75 IN BOTTOM CHOKE SIZE : .75
MAIN HOLE SIZE : 7.875 IN TOOL JOINT SIZE : 4.5 XH

BLOW COMMENT #1 : INITIAL FLOW-WEAK BLOW IN DIESEL-1/4" DEEP.
BLOW COMMENT #2 : FINAL FLOW-NO BLOW.
BLOW COMMENT #3 :
BLOW COMMENT #4 :

RECOVERED : 30 FT OF: MUD (NO SHOW)

CHLORIDES: 1000 PPM

Total Barrels Fluid = 0.14
Total Fluid Prod Rate = 3.38 BFPD
Indicated Wtr Rate = 0.34 BWPD

REMARK 1 :
REMARK 2 :
REMARK 3 :
REMARK 4 :

SET PACKER(S) : 6:32 AM

TIME STARTED OFF BOTTOM : 9:02 AM

WELL TEMPERATURE : 118

INITIAL HYDROSTATIC PRESSURE

(A) 2076

INITIAL FLOW PERIOD MIN: 30

(B) 27 PSI TO (C) : 27

INITIAL CLOSED IN PERIOD MIN: 60

(D) 1220

FINAL FLOW PERIOD MIN: 30

(E) 31 PSI TO (F) : 34

FINAL CLOSED IN PERIOD MIN: 30

(G) 950

FINAL HYDROSTATIC PRESSURE

(H) 2067

WESTERN TESTING CO. INC.
WICHITA - KANSAS

Pressure Transient Report

COMPANY : PICKRELL DRLG CO INC & BRUCE ANDERSON
RIG : THOMAS-KANSAS
FIELD : STEINLE
WELL : #1-B
DATE : 12-28-87
GAUGE NO : 3849

OPERATIONAL COMMENTS

WELL : #1-B

JOB # : 11999

GAUGE # : 3849

DEPTH : 4265

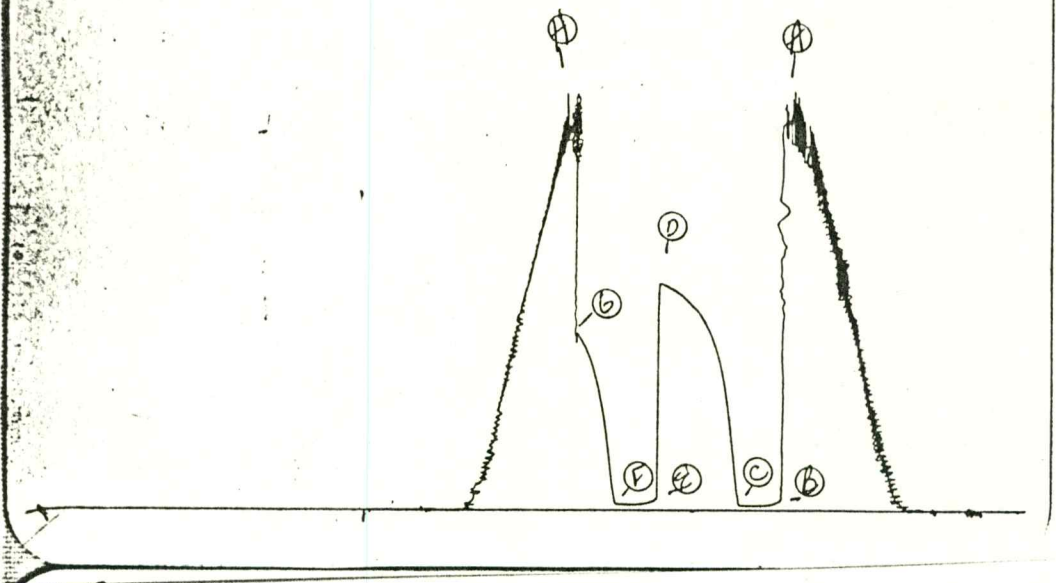
DATE : 28/12/87

TEST :

DATA No.	REAL TIME HR:MN:SS	ELAPSE TIME DELTA HOURS	PRESSURE PSIG	TEMP DEG F	DELTA P Pi-P(i-1)
1	6:32:0	0.000	27.000	118.00	0.000
2	6:36:59	0.083	27.000	118.00	0.000
3	6:42:0	0.167	27.000	118.00	0.000
4	6:47:0	0.250	27.000	118.00	0.000
5	6:51:59	0.333	27.000	118.00	0.000
6	6:57:0	0.417	27.000	118.00	0.000
7	7:02:0	0.500	27.000	118.00	0.000
8	7:05:0	0.550	144.000	118.00	117.000
9	7:08:0	0.600	338.000	118.00	194.000
10	7:11:0	0.650	529.000	118.00	191.000
11	7:14:0	0.700	682.000	118.00	153.000
12	7:17:0	0.750	784.000	118.00	102.000
13	7:20:0	0.800	864.000	118.00	80.000
14	7:23:0	0.850	924.000	118.00	60.000
15	7:26:0	0.900	972.000	118.00	48.000
16	7:29:0	0.950	1014.000	118.00	42.000
17	7:32:0	1.000	1054.000	118.00	40.000
18	7:35:0	1.050	1077.000	118.00	23.000
19	7:38:0	1.100	1102.000	118.00	25.000
20	7:41:0	1.150	1125.000	118.00	23.000
21	7:44:0	1.200	1146.000	118.00	21.000
22	7:47:0	1.250	1163.000	118.00	17.000
23	7:50:0	1.300	1179.000	118.00	16.000
24	7:53:0	1.350	1192.000	118.00	13.000
25	7:56:0	1.400	1202.000	118.00	10.000
26	7:59:0	1.450	1214.000	118.00	12.000
27	8:02:0	1.500	1220.000	118.00	6.000
28	8:03:0	1.517	31.000	118.00	-1189.000
29	8:06:59	1.583	31.000	118.00	0.000
30	8:12:0	1.667	31.000	118.00	0.000
31	8:17:0	1.750	31.000	118.00	0.000
32	8:21:59	1.833	31.000	118.00	0.000
33	8:27:0	1.917	31.000	118.00	0.000
34	8:32:0	2.000	34.000	118.00	3.000
35	8:35:0	2.050	151.000	118.00	117.000
36	8:38:0	2.100	327.000	118.00	176.000
37	8:41:0	2.150	491.000	118.00	164.000
38	8:44:0	2.200	610.000	118.00	119.000
39	8:47:0	2.250	607.000	118.00	-3.000
40	8:50:0	2.300	784.000	118.00	177.000
41	8:53:0	2.350	838.000	118.00	54.000
42	8:56:0	2.400	891.000	118.00	53.000
43	8:59:0	2.450	926.000	118.00	35.000
44	9:02:0	2.500	950.000	118.00	24.000

3849
DSTE I

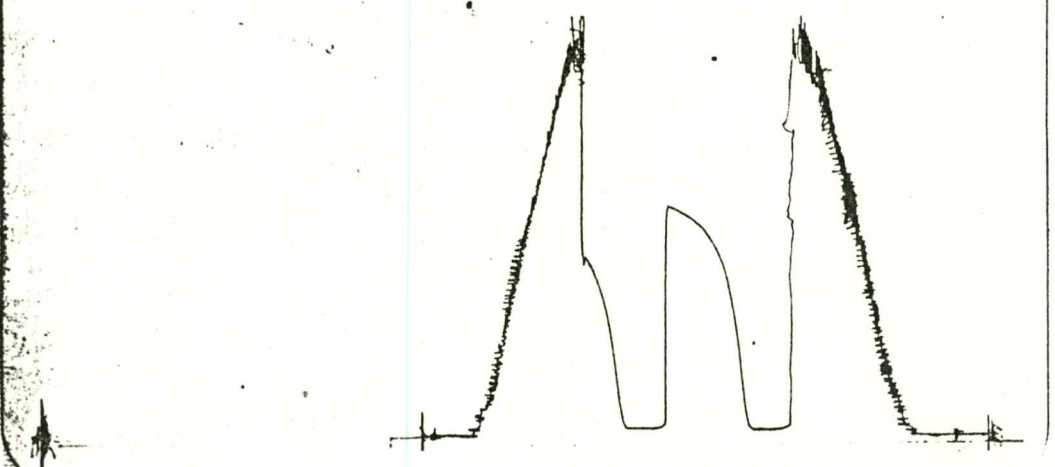
JK # 11999
I



Inside Recorder

13550
DSTE I

JK # 11999
O

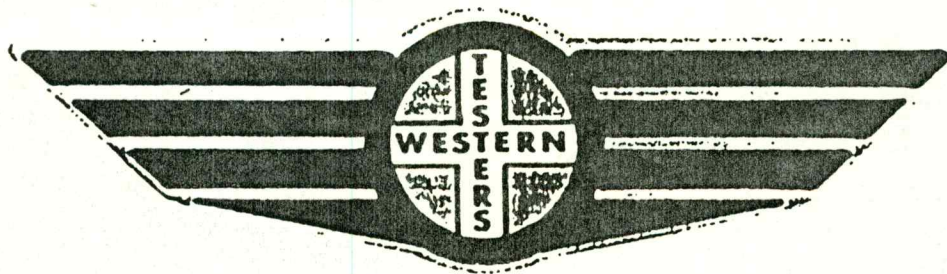


Outside Recorder

FORMATION TEST REPORT

COMPANY PICKRELL DRILLING & BRUCE LEASE & WELL NO. STEINLE 1-B SEC. 18 TWP. 9S RGE. 32W TEST NO. 2 DATE 12-30-87
ANDERSON

NE-SE



Home Office:
P.O. Box 1599

Wichita, Kansas 67201
Phone (316) 262-5861

WESTERN TESTING CO. INC.
SUBSURFACE PRESSURE SURVEY

DATE : 12-30-87 TICKET : 12000
CUSTOMER : PICKRELL DRLG. & BRUCE ANDERSON LEASE : STEINLE
WELL : #1-B TEST: 2 GEOLOGIST : G. MUELLER
ELEVATION : 3056 KB FORMATION : MYR STA-JOHN ZN
SECTION : 18 TOWNSHIP : 9S
RANGE : 32W COUNTY : THOMAS STATE : KANSAS
GAUGE SN# : 3849 RANGE : 4200 CLOCK : 12

INTERVAL FROM : 4478 TO : 4615 TOTAL DEPTH : 4615
DEPTH OF SELECTIVE ZONE :
PACKER DEPTH : 4478 SIZE : 6.75
PACKER DEPTH : SIZE :
PACKER DEPTH : SIZE :
PACKER DEPTH : SIZE :

DRILLING CON. : PICKRELL RIG #10
MUD TYPE : CHEMICAL VISCOSITY : 42
WEIGHT : 9.5 WATER LOSS (CC) : 10.4
CHLORIDES (PPM) : 2000
JARS-MAKE : NO SERIAL NUMBER :
DID WELL FLOW ? : NO REVERSED OUT ? : NO

DRILL COLLAR LENGTH : 156 FT I.D. inch : 2.20
WEIGHT PIPE LENGTH : 0 FT I.D. inch : 0.00
DRILL PIPE LENGTH : 4304 FT I.D. inch : 3.80
TEST TOOL LENGTH : 18 FT TOOL SIZE : 5.50
ANCHOR LENGTH : 137 FT ANCHOR SIZE : 5.50
SURFACE CHOKE SIZE : .75 IN BOTTOM CHOKE SIZE : .75
MAIN HOLE SIZE : 7.875 IN TOOL JOINT SIZE : 4.5 XH

BLOW COMMENT #1 : INITIAL FLOW-WEAK DECREASING BLOW-INCH DEEP IN DIESEL
BLOW COMMENT #2 : NO BLOW ON THE FINAL FLOW.
BLOW COMMENT #3 :
BLOW COMMENT #4 :

RECOVERED : 65 FT OF: OIL CUT MUD
10% OIL-90% MUD

CHLORIDES: 2000 PPM

Total Barrels Fluid = 0.31
Total Fluid Prod Rate = 8.80 BFPD
Indicated Oil Rate = 0.88 BOPD
Indicated Wtr Rate = 0.79 BWPD

REMARK 1 :
REMARK 2 :
REMARK 3 :
REMARK 4 :

SET PACKER(S) : 11:11 AM

TIME STARTED OFF BOTTOM : 1:41 PM

WELL TEMPERATURE : 126

INITIAL HYDROSTATIC PRESSURE

(A) 2263

INITIAL FLOW PERIOD MIN: 20

(B) 47 PSI TO (C) : 47

INITIAL CLOSED IN PERIOD MIN: 60

(D) 749

FINAL FLOW PERIOD MIN: 30

(E) 57 PSI TO (F) : 57

FINAL CLOSED IN PERIOD MIN: 30

(G) 163

FINAL HYDROSTATIC PRESSURE

(H) 2263

WESTERN TESTING CO. INC.
WICHITA - KANSAS

Pressure Transient Report

COMPANY : PICKRELL DRLG. & BRUCE ANDERSON
RIG : THOMAS-KANSAS
FIELD : STEINLE
WELL : #1-B
DATE : 12-30-87
GAUGE NO : 3849

OPERATIONAL COMMENTS

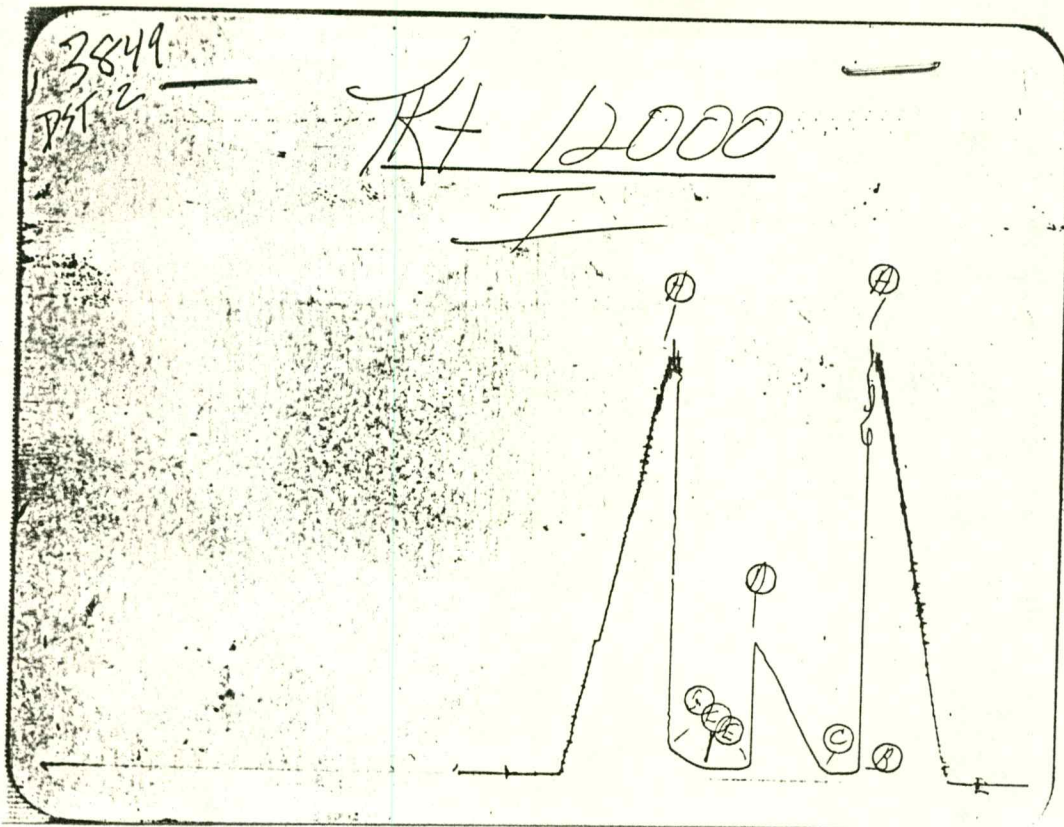
COMPANY : PICKRELL DRLG. & BRUCE ANDERSON

WELL : #1-B
 GAUGE # : 3849
 DATE : 30/12/87

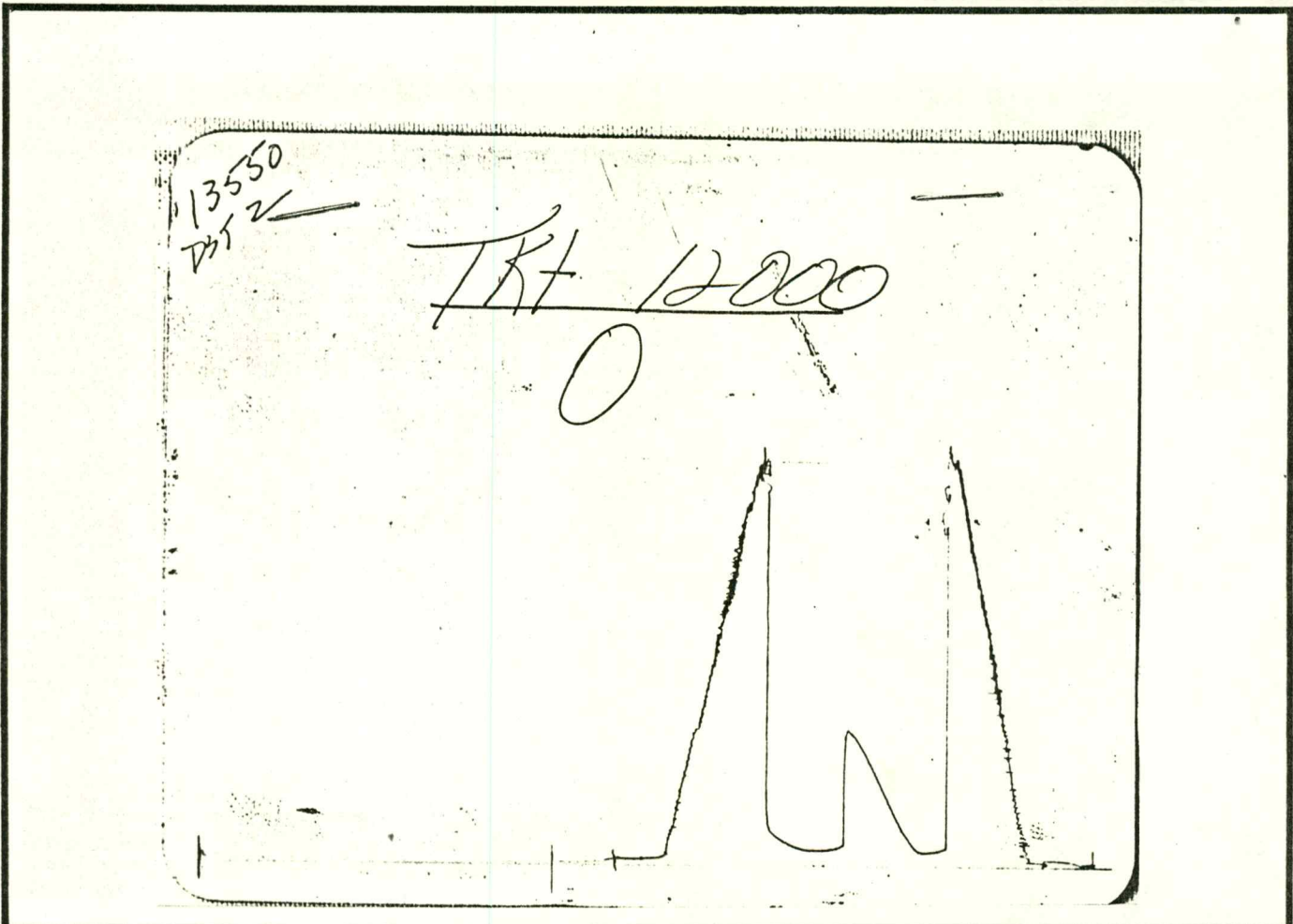
FIELD : STEINLE
 JOB # : 12000
 DEPTH : 4615
 TEST :

DATA No.	REAL TIME HR:MN:SS	ELAPSE TIME DELTA HOURS	PRESSURE PSIG	TEMP DEG F	DELTA P $P_i - P_{(i-1)}$
1	11:11:0	0.000	47.000	126.00	0.000
2	11:15:59	0.083	47.000	126.00	0.000
3	11:21:0	0.167	47.000	126.00	0.000
4	11:26:0	0.250	47.000	126.00	0.000
5	11:30:59	0.333	47.000	126.00	0.000
6	11:33:59	0.383	52.000	126.00	5.000
7	11:36:59	0.433	69.000	126.00	17.000
8	11:39:59	0.483	95.000	126.00	26.000
9	11:42:59	0.533	136.000	126.00	41.000
10	11:45:59	0.583	173.000	126.00	37.000
11	11:48:59	0.633	213.000	126.00	40.000
12	11:51:59	0.683	261.000	126.00	48.000
13	11:54:59	0.733	298.000	126.00	37.000
14	11:57:59	0.783	344.000	126.00	46.000
15	12:0:59	0.833	384.000	126.00	40.000
16	12:3:59	0.883	432.000	126.00	48.000
17	12:6:59	0.933	483.000	126.00	51.000
18	12:9:59	0.983	525.000	126.00	42.000
19	12:12:59	1.033	567.000	126.00	42.000
20	12:15:59	1.083	605.000	126.00	38.000
21	12:18:59	1.133	636.000	126.00	31.000
22	12:21:59	1.183	676.000	126.00	40.000
23	12:24:59	1.233	701.000	126.00	25.000
24	12:27:59	1.283	735.000	126.00	34.000
25	12:30:59	1.333	749.000	126.00	14.000
26	12:32:0	1.350	57.000	126.00	-692.000
27	12:35:59	1.417	57.000	126.00	0.000
28	12:41:0	1.500	57.000	126.00	0.000
29	12:45:59	1.583	57.000	126.00	0.000
30	12:50:59	1.667	57.000	126.00	0.000
31	12:56:0	1.750	57.000	126.00	0.000
32	13:0:59	1.833	57.000	126.00	0.000
33	13:3:59	1.883	59.000	126.00	2.000
34	13:6:59	1.933	64.000	126.00	5.000
35	13:9:59	1.983	71.000	126.00	7.000
36	13:12:59	2.033	78.000	126.00	7.000
37	13:15:59	2.083	89.000	126.00	11.000
38	13:18:59	2.133	106.000	126.00	17.000
39	13:21:59	2.183	120.000	126.00	14.000
40	13:24:59	2.233	132.000	126.00	12.000
41	13:27:59	2.283	147.000	126.00	15.000
42	13:30:59	2.333	163.000	126.00	16.000

WESTERN TESTING CO. INC.



Inside Recorder



Outside Recorder