

KANSAS

FORM 51 5M PETROL

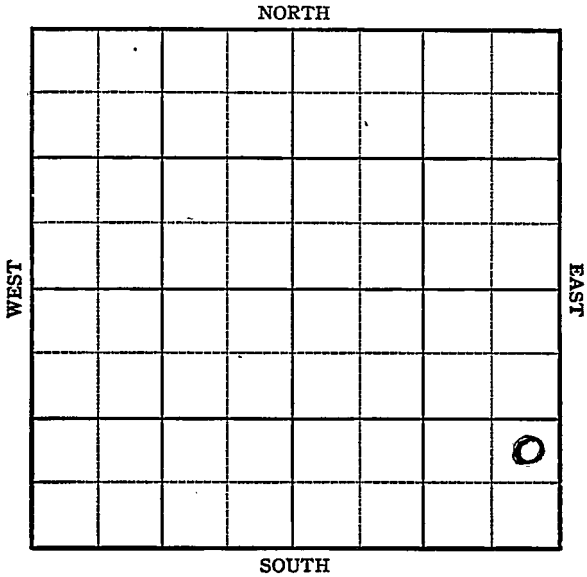
O. W. P. B.

Rooks

Section 32 Township 9 Range 20W

Well No. #1 Hinkhouse

Company Continental



Sec. 32 Twp. 9 R. 20W

Well No. #1 Hinkhouse Farm

Continental Company

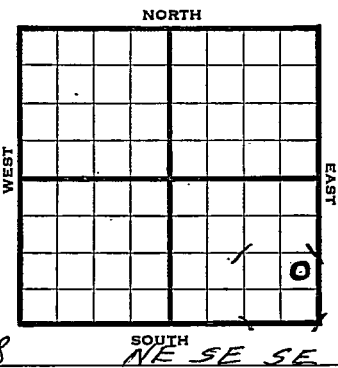
Palco Pool

 Ft. from N. Line

990 Ft. from S. Line

330 Ft. from E. Line

 Ft. from W. Line



4 les. 2258

SOUTH
NE SE SE

1944

REPORT

4/5	Location
4/12	Derrick
4/19	"
4/26	"
5/3	"
5/10	"
5/17	10" - 241 Anhy 1762 Drlg. 2355
5/24	Drlg. 3331'
5/31	Arb. 3839 6" @ 3845 TD 3846 RUST
6/7	23 shots 3840-45 Swb 200 oil in 8 hrs.
6/15	" " " " " S.O.
6/21	" " " " " "
6/28	" " " " " "

OVER

1944

7/12 23 shots 3840-45'
Swb 200 oil in 8 hours SD

7/19 " " " " " " " " " "

7/26 " " " " " " " " " "

8/2 " " " " " " " " " "

8/9 " " " " " " " " " "

8/16 " " " " " " " " " "

8/23 " " " " " " " " " "

8/30 Arb 3839
6" @ 3845
23 shots 3840-45
Pump 480 oil plus 7% wtr pot.
Grav. 36.
TD 3846

COMPLETED

O. W. P. B.

1952

10/22 OTD 3847'
Lans 3521', Arb 3840,
6" @ 3847
PB 3820
- 25/3730-40, 20/3676-86, 6/3667-70,
B/water 1000A P/Water

10/29 "

11/5 "

11/12 NR

11/20 "

11/27 NR

12/4 NR

12/11 POP

12/18 POP

12/25 POP

12/30 Oil Well
TD 3847
Lans 3521, Arb. 3840,
OTD 3847
6" @ 3847'
PB 3820
25/3730-40, 20/3676-86, 6/3667-70,
B/wtr. 1000A P/wtr.

#1 Hinkhouse
(Information Brought Forward)

1952

12/30

CO to 3847 S/scum oil & 4
bwph 400A
Comp. 25 bopd 200 bw

COMPLETED

KANSAS
 Map No. 62 Sec. 32 Twp. 9 R. 20W

Well No. 1 Hinkhouse

Continental

Company

FIRST REPORT

Contractor

NE SE SE

SECTION PLAT

_____ Ft. from N. Line

990 Ft. from S. Line

330 Ft. from E. Line

_____ Ft. from W. Line

Palco Pool

Location X

Rig up _____

Drilling and Remarks:

RECORD

Cased _____ in., _____ ft.

Sand _____

Gas _____

Oil _____

Total Depth _____

PRODUCTION

1st 24 hrs. Nat. _____

1st 24 hrs. after shot _____

Gas _____ Cu. Ft.

Dry Hole _____

Abandoned _____

Date

APR 5 1944 19

S. J. LEWIS Scout

