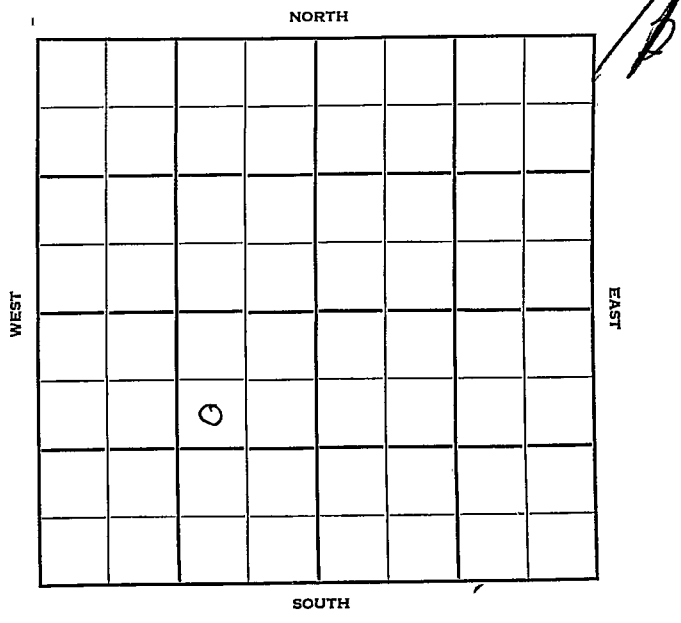


Section 34 Township 9 Range 22W

Well No. #2 Sandlin

Company Sunflower Oil



Graham -

KANSAS ✓

Sec. 34 Twp. 9 R. 22W

Well No. #2 Sandlin Farm

Sunflower Oil Company

Contractor

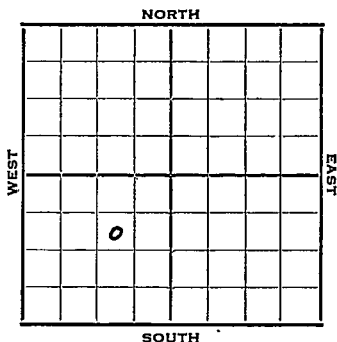
990 Ft. from N. Line

Ft. from S. Line

990 Ft. from E. Line

Ft. from W. Line

SW 1/4 SW NE SW



1952 Elev. 2346' REPORT

10/22	RUR		
10/29	8" @ 160	Anhy 1850'	Heeb 3549'
	KC 3586'	B KC 3831'	
	Drlg. 3923'		
11/5	5" @		
11/12	"		
11/20	"		
11/27	"		
12/4	"		
12/11	" "		
12/18	5" @		
12/25	" "		
1/1	5" @		
1/8	5" @		
1/15	Running Schl.		
1/22	NR		
1/29	"		
2/5	"		
2/12	NR		

OVER

1953
2/18 NR
2/26 NR
3/12 NR
3/19 NR
3/26 NR
4/2 "
4/9 "
4/16 "
4/23 NR
4/30 "
5/6 "
5/21 "
5/28 "

6/3 "
6/24 NR
7/1 "
7/22 NR
7/29 "
8/5 "
8/12 "

9/2 Spud 10-17-52

D&A

TD 3923

8" @ 160

Anhy 1850, Heeb 3549, KC 3586, B KC
3831

TD 3923

Temp. Abnd.

ABANDONED

