

STATE OF KANSAS
KANSAS CORPORATION COMMISSION
CONSERVATION DIVISION
130 South Market - Room 2078
Wichita, Kansas 67202

FORM CP-1 (3/92)

WELL PLUGGING APPLICATION FORM
(PLEASE TYPE FORM and File ONE Copy)

API # 15-189-20342-00-00 Identifier number of this well). This must be listed for wells drilled since 1967; if no API# was issued, indicate spud or completion date. *6/04*

WELL OPERATOR Exxon Mobil Corporation KCC LICENSE # 5208
(owner/company name) (operator's)

ADDRESS PO Box 4358 CITY Houston

STATE Texas ZIP CODE 77210 CONTACT PHONE # () 713-431-1828

LEASE Reynolds, Martha WELL# B-2 SEC. 20 T. 31S R. 36 (~~East~~/West)

C NW SPOT LOCATION/OOOO COUNTY Stevens

1500 FEET (in exact footage) FROM S/N (circle one) LINE OF SECTION (NOT Lease Line)

1300 FEET (in exact footage) FROM E/W (circle one) LINE OF SECTION (NOT Lease Line)

Check One: OIL WELL GAS WELL D&A SWD/ENHR WELL DOCKET#

CONDUCTOR CASING SIZE SET AT CEMENTED WITH SACKS

SURFACE CASING SIZE 8 5/8" SET AT 611' CEMENTED WITH 300 SACKS

PRODUCTION CASING SIZE 5 1/2" SET AT 2995' CEMENTED WITH 300 SACKS

LIST (ALL) PERFORATIONS and BRIDGEPLUG SETS: Please see attached

ELEVATION 3045' T.D. 2995' PBD 2970' ANHYDRITE DEPTH
(G.L./K.B.) (Stone Corral Formation)

CONDITION OF WELL: GOOD POOR CASING LEAK JUNK IN HOLE

PROPOSED METHOD OF PLUGGING Please see attached / Per the rules and

regulations of the KCC

(If additional space is needed attach separate page)

IS WELL LOG ATTACHED TO THIS APPLICATION AS REQUIRED? NO IS ACO-1 FILED? YES

If not explain why?

PLUGGING OF THIS WELL WILL BE DONE IN ACCORDANCE WITH K.S.A. 55-101 et. seq. AND THE RULES AND REGULATIONS OF THE STATE CORPORATION COMMISSION.

LIST NAME OF COMPANY REPRESENTATIVE AUTHORIZED TO BE IN CHARGE OF PLUGGING OPERATIONS:

Richard Lewis PHONE# () 316-544-5534

ADDRESS 200 W. 4th Street City/State Hugoton, KS 67951

PLUGGING CONTRACTOR Sargent & Horton KCC LICENSE # 31151 *405*
(company name) (contractor's)

ADDRESS Rt. 1, Box 49BA, Tyrone, KS 73951 PHONE # () 580-854-6515

PROPOSED DATE AND HOUR OF PLUGGING (if known?) ASAP

PAYMENT OF THE PLUGGING FEE (K.A.R. 82-3-118) WILL BE GUARANTEED BY OPERATOR OR AGENT

DATE: 3/3/04 AUTHORIZED OPERATOR/AGENT: Colleen Rada
(signature)

RECEIVED
MAR 05 2004
KANSAS CORPORATION COMMISSION
WICHITA, KS
CONSERVATION DIVISION

MAR 05 2004

CONSERVATION DIVISION
WICHITA, KS

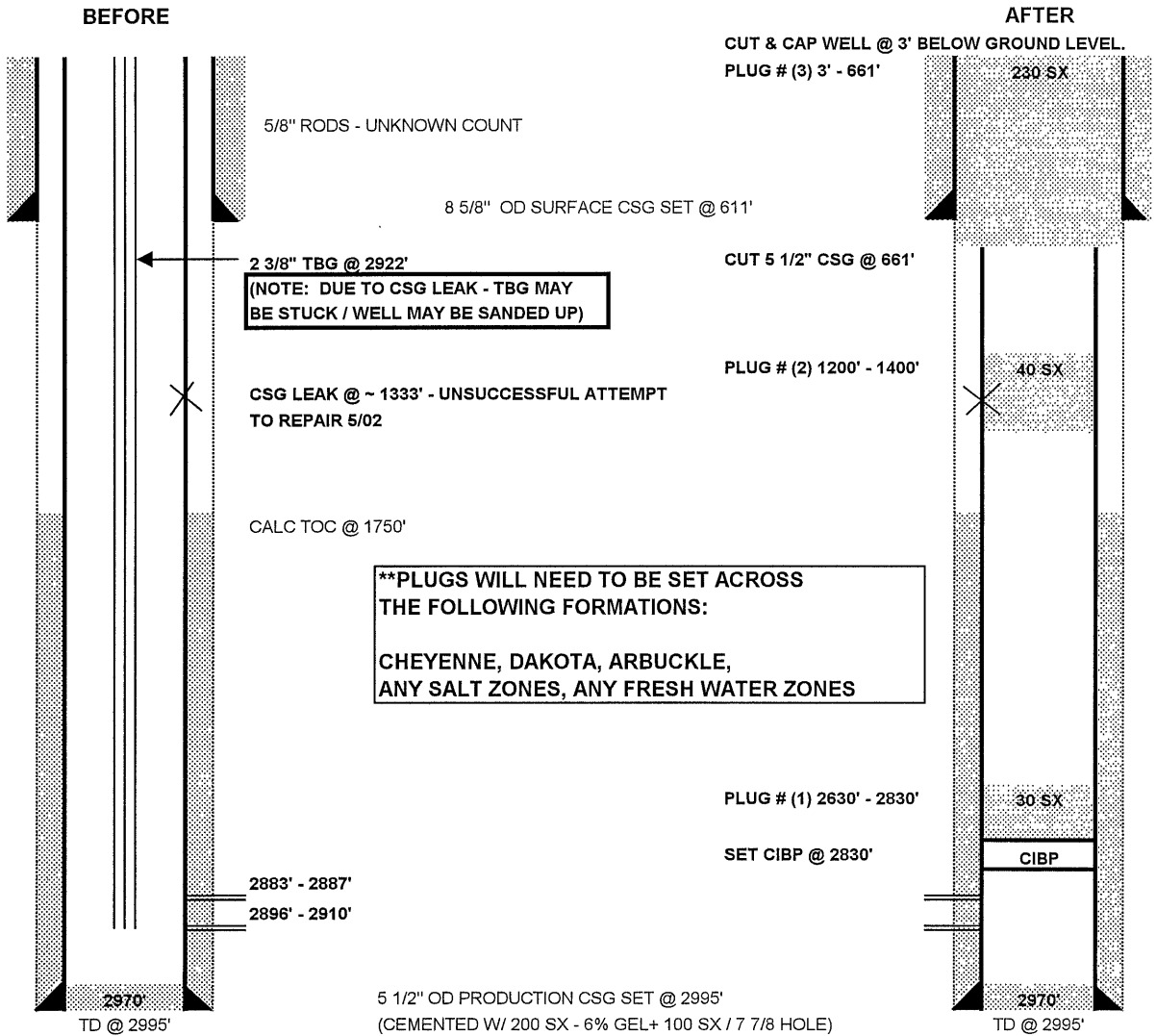
15-189-20342-00-00

PRELIMINARY B&A SKETCH-PLUGS WILL CHANGE PER THE
DIRECTIONS OF THE KCC DISTRICT REPRESENTATIVE

COMPANY: Exxon Mobil Corporation
WELL NAME: Reynolds
WELL #: B - 2
API#: 15-189-20342
COUNTY: Stevens

SURFACE CASING			
OD	WT / FT	GRADE	SET AT
8 5/8"			611'
PRODUCTION CASING			
OD	WT / FT	GRADE	SET AT
5 1/2"			2995'
TUBING			
OD	WT / FT	GRADE	SET AT
2 3/8"	4.7	J-55	2922'

CAPACITIES (BBL/FT)	
2 3/8" TBG	0.00387
5 1/2" CSG	0.0244
2 3/8" x 5 1/2"	0.0189
8 5/8" CSG	0.0636



PROPOSED PLUGGING PROCEDURE FOR EXXON MOBIL CORPORATION

WELL: REYNOLDS # B-2
FIELD: HUGOTON
COUNTY: STEVENS

RECEIVED
KANSAS CORPORATION COMMISSION

MAR 05 2004

CONSERVATION DIVISION
WICHITA, KS

THIS IS A CATEGORY III WORKOVER.

BOPE SPECIFICATIONS: 3K

NOTE: SUBJECT WELL WILL NOT STAND FULL. SPECIAL CARE MUST BE TAKEN TO KEEP WELL DEAD.

NOTE: PERFORM ALL WELL WORK OPERATIONS IN ACCORDANCE WITH THE HPO WORKOVER OPERATIONS MANUAL.

NOTE: USE CLASS 'H', 16.4 PPG, 1.06 YIELD CEMENT FOR ALL PLUGS.

NOTE: PUMP 9.5 PPG MUD LADEN FLUID BETWEEN CEMENT PLUGS.

NOTE: NOTIFY KCC DISTRICT OFFICE IN DODGE CITY, KS PRIOR TO COMMENCEMENT OF WORK & WITHIN SUFFICIENT TIME TO WITNESS PLUGGING OPERATIONS.

NOTE: ENSURE PLUGGING FORMS HAVE APPROPRIATE INFORMATION NEEDED TO FILE APPROPRIATE PAPERWORK W/ THE KCC TO CONCLUDE PLUGGING OPERATIONS.

Check pressures on all casing strings daily and document on morning reports. Discuss safe blow down/well kill procedures with Exxon Mobil Workover Supervisor.

1. INSPECT JOBSITE FOR POTENTIAL HAZARDS & LOCATION CHARACTERISTICS THAT MAY IMPACT THE PLANNED WELLWORK AND/OR REQUIRE MODIFICATION OF THE PROCEDURE. INITIATE MOC PROCESS IF NEEDED.
2. SET & TEST RIG ANCHORS AS NEEDED.
3. **PLUG WELL AS DIRECTED BY KCC DISTRICT REPRESENTATIVE.** A GENERAL PLAN IS AS FOLLOWS, BUT SHOULD BE REVISED TO ENSURE ALL FORMATIONS (INCLUDING THE CHEYENNE FORMATION, DAKOTA FORMATION, ARBUCKLE FORMATION, ANY SALT FORMATIONS & ANY FRESH & USABLE WATER ZONES) ARE ISOLATED AS PER THE SPECIFICATIONS OF THE KCC.
4. MIRU.
5. RU WL UNIT W/ CLASS II LUBRICATORS & TEST. MAKE GAUGE RING & JUNK BASKET RUN TO 2840'. POH
6. RIH & SET CIBP @ 2830'. POH.
7. RIH W/ WORKSTRING & TAG TOP OF CIBP @ 2830'.
8. CIRCULATE 9.5 PPG MUD.
9. SET 30 SX CEMENT PLUG FROM 2630' - 2830'.
10. POH W/ WORKSTRING TO 1400'. REVERSE OUT.
11. SET 40 SX CEMENT PLUG FROM 1200' - 1400'.
12. POH W/ WORKSTRING TO 900'. REVERSE OUT.



13. WOC. TEST 5 1/2" CSG TO 500 PSI. (NOTE: IF CSG DOES NOT TEST, LOCATE CSG LEAK(S) AND OBTAIN ALL NECESSARY APPROVALS TO REVISE PROCEDURE TO ISOLATE LEAK(S).
14. POH W/ WORKSTRING.
15. NIPPLE UP ON 5 1/2" CSG.
16. SET BOP'S W/ 5 1/2" PIPE RAMS & TEST.
17. RU WL UNIT W/ CLASS II LUBRICATOR & TEST. CUT 5 1/2" CSG @ 661'. RD WL UNIT.
18. CIRCULATE & CONDITION MUD.
19. RECOVER 5 1/2" CSG.
20. CHANGE BOP RAMS TO 2 3/8" TBG.
21. RIH W/ 2 3/8" TBG WORKSTRING TO 661'.
22. SET 230 SX CEMENT PLUG FROM 3' - 661'.
23. POH W/ WORKSTRING.
24. REMOVE BOP'S.
25. CUT & CAP WELL 3' BELOW GROUND LEVEL.
26. RD/MO.

3/2/04

RECEIVED
KANSAS CORPORATION COMMISSION

MAR 05 2004

CONSERVATION DIVISION
WICHITA, KS



KANSAS

CORPORATION COMMISSION

Kathleen Sebelius, Governor Brian J. Moline, Chair John Wine, Commissioner Robert E. Krehbiel, Commissioner

NOTICE OF RECEIPT OF WELL PLUGGING APPLICATION (CP-1)

EXXONMOBIL Oil Corp
14950 Heathrow Forrest Parkway
PO Box 4358
Houston, TX 77210-4358

March 08, 2004

Re: MARTHA REYNOLDS B #2
API 15-189-20342-00-00
NW 20-31S-36W, 1500 FNL 1300 FWL
STEVENS COUNTY, KANSAS

Dear Operator:

This letter is to notify you that the Conservation Division is in receipt of your plugging proposal, form CP-1, for the above-captioned well.

Your CP-1 has been reviewed by the Conservation Division central office for completeness and to verify license numbers. The plugging proposal will now be forwarded to the district office listed below for review of your proposed method of plugging.

Please contact the district office for approval of your proposed plugging method at least five (5) days before plugging the well, pursuant to K.A.R. 82-3-113 (b). If a workover pit will be used during the plugging of the well it must be permitted. A CDP-1 form must be filed and approved prior to the use of the pit.

The Conservation Division's review of form CP-1, either in the central or district office, does not include an inquiry into well ownership or the filing operator's legal right to plug the well.

This notice in no way constitutes authorization to plug the above-captioned well by persons not having legal rights of ownership or interest in the well. This notice is void after ninety (90) days from the above date.

Sincerely



David P. Williams
Production Supervisor

District: #1
210 E Frontview, Suite A
Dodge City, KS 67801
(620) 225-8888