

15-039-20093-00-01

RECEIVED
STATE CORPORATION COMMISSION
AUG 7 8-7-74
CONSERVATION DIVISION
Wichita, Kansas
Form CP-4

STATE OF KANSAS
STATE CORPORATION COMMISSION

Give All Information Completely
Make Required Affidavit
Mail or Deliver Report to:
Conservation Division
State Corporation Commission

P. O. Box 17027
Wichita, Kansas 67217
NORTH

WELL PLUGGING RECORD

Decatur County, Sec. 3 Twp. 1S Rge. (E) 26(W)

Location as "NE/CNW/SW" or footage from lines W/2 SW SE

Lease Owner W. W. Sauvage, Inc.

Lease Name KILZER Well No#1 (Washdown)

Office Address Oberlin, Kansas 67749

Character of Well (completed as Oil, Gas or Dry Hole) Dry Hole

Date well completed August 1 19 74

Application for plugging filed (verbally) August 1 19 74

Application for plugging approved (verbally) August 1 19 74

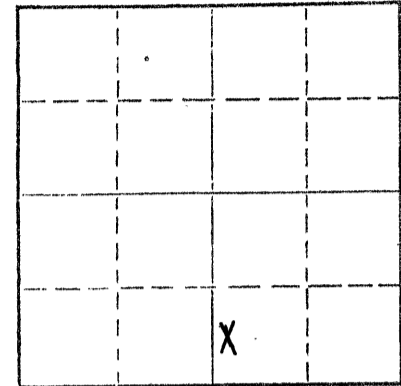
Plugging commenced August 1 19 74

Plugging completed August 1 19 74

Reason for abandonment of well or producing formation

If a producing well is abandoned, date of last production 19

Was permission obtained from the Conservation Division or its agents before plugging was commenced? Yes (verbally)



Locate well correctly on above
Section Plat

Name of Conservation Agent who supervised plugging of this well Leo Massey

Producing formation Depth to top Bottom Total Depth of Well 3409 Feet

Show depth and thickness of all water, oil and gas formations.

OIL, GAS OR WATER RECORDS

CASING RECORD

FORMATION	CONTENT	FROM	TO	SIZE	PUT IN	PULLED OUT

Describe in detail the manner in which the well was plugged, indicating where the mud fluid was placed and the method or methods used in introducing it into the hole. If cement or other plugs were used, state the character of same and depth placed, from feet to feet for each plug set.

Set 1st Plug @ 1545' w/70 Sacks
2nd Plug @ 185' w/20 sacks
3rd Plug @ 40' w/10 sacks

(If additional description is necessary, use BACK of this sheet)

Name of Plugging Contractor Abercrombie Drilling, Inc.

Address 801 Union Center, Wichita, Kansas 67202

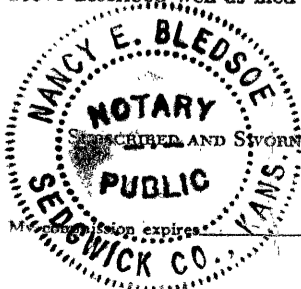
STATE OF KANSAS, COUNTY OF SEDGWICK ss.
Jerry A. Langrehr, Vice President (employee of owner) or (owner or operator) of the above-described well, being first duly sworn on oath, says: That I have knowledge of the facts, statements, and matters herein contained and the log of the above-described well as filed and that the same are true and correct. So help me God.

(Signature) Jerry A. Langrehr

Jerry A. Langrehr
801 Union Center, Wichita, Kansas 67202

August 19 74

Nancy E. Bledsoe
Nancy E. Bledsoe Notary Public.



April 8, 1978

15-039-20093-00-01

KANSAS DRILLERS LOG

S. 3 T. 1S R. 26 ~~W~~^N

API No. 15 County _____ Number _____ (Washdown)

Loc. W/2 SW SE

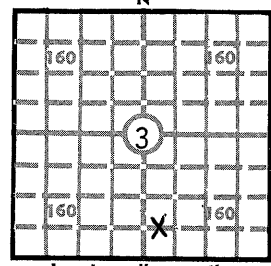
Operator W. W. Sauvage, Inc.

County Decatur County, Ks.

Address P. O. Box 132, Oberlin, Kansas 67749

640 Acres
N

Well No. #1 Lease Name KILZER



Footage Location 660 feet from ~~N~~ (S) line 2310 feet from (E) (W) line

Locate well correctly

Principal Contractor Abercrombie Drilling, Inc. Geologist Jack K. Wharton

Elev.: Gr. 2500'

Spud Date July 30, 1974 Total Depth 3409' P.B.T.D. _____

Date Completed August 1, 1974 Oil Purchaser None

DF 2506' KB 2507'

CASING RECORD

Report of all strings set — surface, intermediate, production, etc.

Purpose of string	Size hole drilled	Size casing set (in O.D.)	Weight lbs/ft.	Setting depth	Type cement	Sacks	Type and percent additives

LINER RECORD

PERFORATION RECORD

Top, ft.	Bottom, ft.	Sacks cement	Shots per ft.	Size & type	Depth interval

TUBING RECORD

Size	Setting depth	Packer set at

ACID, FRACTURE, SHOT, CEMENT SQUEEZE RECORD

Amount and kind of material used	Depth interval treated

INITIAL PRODUCTION

Date of first production _____		Producing method (flowing, pumping, gas lift, etc.) _____			
RATE OF PRODUCTION PER 24 HOURS	Oil	Gas	Water	Gas-oil ratio	
	bbls.	MCF	bbls.	CFPB	
Disposition of gas (vented, used on lease or sold) _____			Producing interval (s) _____		

INSTRUCTIONS: As provided in KCC Rule 82-2-125, within 90 days after completion of a well, one completed copy of this Drillers Log shall be transmitted to the State Geological Survey of Kansas, 4150 Monroe Street, Wichita, Kansas 67209. Copies of this form are available from the Conservation Division, State Corporation Commission, 3830 So. Meridian (P.O. Box 17027), Wichita, Kansas 66217. Phone AC 316-522-2206. If confidential custody is desired, please note Rule 82-2-125. Drillers Logs will be on open file in the Oil and Gas Division, State Geological Survey of Kansas, Lawrence, Kansas 66044.

Operator W. W. Sauvage, Inc.		DESIGNATE TYPE OF COMP.: OIL, GAS, DRY HOLE, SWDW, ETC.:
Well No. #1	Lease Name KILZER	Dry Hole
S <u>3</u> T <u>1S</u> R <u>26</u> W Decatur County, Kansas		

WELL LOG

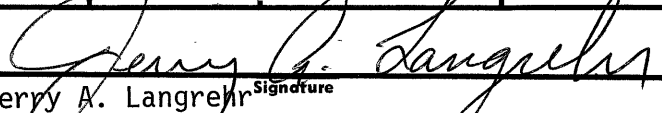
Show all important zones of porosity and contents thereof; cored intervals, and all drill-stem tests, including depth interval tested, cushion used, time tool open, flowing and shut-in pressures, and recoveries.

SHOW GEOLOGICAL MARKERS, LOGS RUN, OR OTHER DESCRIPTIVE INFORMATION.

FORMATION DESCRIPTION, CONTENTS, ETC.	TOP	BOTTOM	NAME	DEPTH
<p>Washdown only - none available to us</p> <p>DST #1 (3466-3491) (Straddle Test) 30", 30", 60", 45". Weak blow for 50". Recovered 90' Drilling Mud. IFP 63#-67#; IBHP 145#; FFP 90#-95#; FBHP 211#.</p> <p>DST #2 (3270-3311) (Straddle Test) 30", 30", 60", 30". Recovered 725' total fluid. 245' Drilling Mud with a few spots of oil, 120' water mud, 360' water. IFP 73#-148#; IBHP 737#; FFP 211#-360#; FBHP 726#.</p> <p>D&A: 11:45 p.m. August 1, 1974 State Plugger: Leo Massey Set 1st Plug @ 1545' w/70 Sacks 2nd Plug @ 185' w/20 Sacks 3rd Plug @ 40' w/10 Sacks</p>			<p>LOG TOPS:</p> <p>Heebner 3264</p> <p>Toronto 3299</p> <p>Lansing 3304</p> <p>ELTD 3610</p>	

RECEIVED
 STATE CORPORATION COMMISSION
 8-7-1974
 AUG 7 1974
 CONSERVATION DIVISION
 Wichita, Kansas

USE ADDITIONAL SHEETS, IF NECESSARY, TO COMPLETE WELL RECORD.

Date Received	<p align="center">  Jerry A. Langrehr Vice President, Abercrombie Drilling, Inc. August 6, 1974 </p>
	<p>Signature</p> <p>Title</p> <p>Date</p>