

15-039-00204-00-00

TYPE OR PRINT

NOTICE OF INTENTION TO DRILL

C-1

TO BE FILED WITH THE STATE CORPORATION COMMISSION PRIOR TO COMMENCEMENT OF WELL

1. Operator BARRON KIDD Address 3707 Rawlins - 405 Oak Plaza Bldg.
Dallas 19, Texas
2. Lease name LULU M. HITCHCOCK Well No. 1 County Decatur
3. Well Location Center SE/4 SE/4 NW/4 Sec. 22 Township 1S Range 27W
4. Well to be drilled 330 ft. from nearest lease line.
5. Drilling Contractor Burch Exploration Ltd. Address 1011 Union Center Bldg., Wichita, Kansas
6. Type of equipment: Rotary Cable Tool Approx. date operation to begin May 11 196 4.
7. Well to be drilled for Oil Gas Disposal Input Estimated Total Depth of Well 3450 ft.
8. Depth of deepest fresh water well within one mile of location 90 ft. If none exists, write NONE.
9. Ground elevation at location is approx. _____ ft. higher or 10 ft. lower than ground elevation at water well.
10. Depth of the deepest municipal water well within three miles of location None ft. If none exists, write NONE

11. Operator states that he will set surface pipe at least 25 ft. below all Tertiary or unconsolidated deposits and, taking into consideration differences in ground elevations, that the minimum depth necessary, to the best of his knowledge and belief, to protect all fresh water zones is 125 ft. and operator agrees to set surface pipe at this location to a depth of not less than 150 ft. Alternate 1 Alternate 2 .

REMARKS:

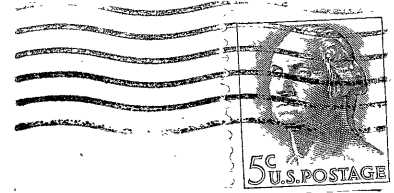
BARRON KIDD

Signature of Operator By:

Emory T. Corbett

Emory T. Corbett





**State Corporation Commission of Kansas
Conservation Division
500 Insurance Building
212 North Market
Wichita 2, Kansas**

RECEIVED
STATE CORPORATION COMMISSION
5-8-1964
MAY 8 1964

**CONSERVATION DIVISION
Wichita, Kansas**

(IF PREFERRED, MAIL IN ENVELOPE)