

15-039-20278-00-00

KANSAS DRILLERS LOG

IMPORTANT
Kans. Geo. Survey request samples on this well.

S. 28 T. 1 R. 26 ^X W

Loc. NE NE

County Decatur

API No. 15 — 039 — 20,278 — 00-00
County Number

Operator
Abercrombie Drilling, Inc.

Address 801 Union Center
Wichita, Kansas 67202

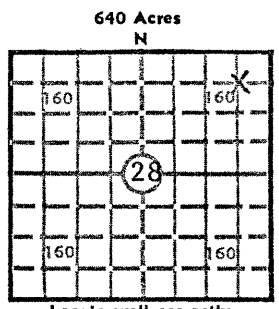
Well No. #1 Lease Name Kelly

Footage Location
660 feet from (N) (S) line 660 feet from (E) (W) line

Principal Contractor Abercrombie Drilling, Inc. Geologist Jack K. Wharton

Spud Date 11-6-73 Total Depth 3654' P.B.T.D.

Date Completed 11-15-73 Oil Purchaser



Locate well correctly
Elev.: Gr. 2519

DF 2525 KB 2527

CASING RECORD

Report of all strings set — surface, intermediate, production, etc.

Purpose of string	Size hole drilled	Size casing set (in O.D.)	Weight lbs/ft.	Setting depth	Type cement	Sacks	Type and percent additives
Surface	9-7/8"	7-5/8"	---	228'	Common	100	2% gel

LINER RECORD			PERFORATION RECORD		
Top, ft.	Bottom, ft.	Sacks cement	Shots per ft.	Size & type	Depth interval

TUBING RECORD		
Size	Setting depth	Packer set at

ACID, FRACTURE, SHOT, CEMENT SQUEEZE RECORD

Amount and kind of material used	Depth interval treated

INITIAL PRODUCTION

Date of first production	Producing method (flowing, pumping, gas lift, etc.)				
RATE OF PRODUCTION PER 24 HOURS	Oil bbls.	Gas MCF	Water bbls.	Oil ratio	CFPB
Disposition of gas (vented, used on lease or sold)			Producing interval(s)		

RECEIVED
STATE CORPORATION COMMISSION
NOV 20 1973
CONSERVATION DIVISION
Wichita, Kansas
1120-1973

INSTRUCTIONS: As provided in KCC Rule 82-2-125, within 90 days after completion of a well, one completed copy of this Drillers Log shall be transmitted to the State Geological Survey of Kansas, 4150 Monroe Street, Wichita, Kansas 67209. Copies of this form are available from the Conservation Division, State Corporation Commission, 3830 So. Meridian (P.O. Box 17027), Wichita, Kansas 66217. Phone AC 316-522-2206. If confidential custody is desired, please note Rule 82-2-125. Drillers Logs will be on open file in the Oil and Gas Division, State Geological Survey of Kansas, Lawrence, Kansas 66044.

Operator **Abercrombie Drilling, Inc.** DESIGNATE TYPE OF COMP.: OIL, GAS, DRY HOLE, SWDW, ETC.:

Well No. **1** Lease Name **Kelly** Dry Hole

S 28 T 1 S R 26 ^K/_W

WELL LOG

Show all important zones of porosity and contents thereof; cored intervals, and all drill-stem tests, including depth interval tested, cushion used, time tool open, flowing and shut-in pressures, and recoveries.

SHOW GEOLOGICAL MARKERS, LOGS RUN, OR OTHER DESCRIPTIVE INFORMATION.

FORMATION DESCRIPTION, CONTENTS, ETC.	TOP	BOTTOM	NAME	DEPTH
Clay & Sand	0	170	Anhydrite	1982
Shale	170	1430	B/Anhydrite	2010
Shale & Sand	1430	1765	Heebner	3275
Shale	1765	1983	Toronto	3309
Anhydrite	1983	2012	Lansing	3316
Shale	2012	2620	B/K.C.	3523
Lime & Shale	2620	2840	Granite Wash	3628
Shale & Lime	2840	3410	Total Depth	3654
Lime	3410	3654		
R.T.D.		3654		
<p>DST #1 (3332-3359) 30"-30"-30"-30". Rec. 3' drilling mud. FP 20#-20#, IBHP 20#, FBHP 20#.</p> <p>DST #2 (3328-3365) Straddle Test. 30"-45"-30"-30". Rec. 40' watery mud. IFP 54-64#, IBHP 982#, FFP 71-71#, FBHP 928#.</p>				

USE ADDITIONAL SHEETS, IF NECESSARY, TO COMPLETE WELL RECORD.

Date Received

Jerry A. Langrehr
 Jerry A. Langrehr Signature
 Vice President Title

November 19, 1973

Date