

TYPE OR PRINT

NOTICE OF INTENTION TO DRILL

C-1

15-039-20,027-00-00

TO BE FILED WITH THE STATE CORPORATION COMMISSION PRIOR TO COMMENCEMENT OF WELL

1. Operator Okmar Oil Company Address 1130 Wichita Plaza, Wichita, Kansas 67202
2. Lease name Moore A Well No. 1 County Decatur
3. Well Location SE SE SE Sec. 2 Township 1 Range 29 W
4. Well to be drilled 330 ft. from nearest lease line.
5. Drilling Contractor Leben Drilling, Inc. Address 815 Wichita Plaza, Wichita, Kansas 67202
6. Type of equipment: Rotary Cable Tool Approx. date operation to begin October 21 196 7.
7. Well to be drilled for Oil Gas Disposal Input Estimated Total Depth of Well 4000 ft.
8. Depth of deepest fresh water well within one mile of location 60 ft. If none exists, write NONE.
9. Ground elevation at location is approx. 70 ft. higher or _____ ft. lower than ground elevation at water well.
10. Depth of the deepest municipal water well within three miles of location -0- ft. If none exists, write NONE.
11. Operator states that he will set surface pipe at least 25 ft. below all Tertiary or unconsolidated deposits and, taking into consideration differences in ground elevations, that the minimum depth necessary, to the best of his knowledge and belief, to protect all fresh water zones is 160 ft. and operator agrees to set surface pipe at this location to a depth of not less than 200 ft. Alternate 1 Alternate 2 .

REMARKS:

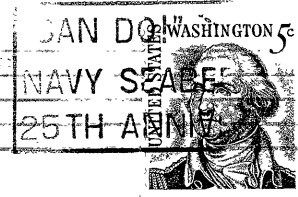
Signature of Operator

Robert M. Beren
Robert M. Beren

30-2109-519A



1-64-25M



**State Corporation Commission of Kansas
Conservation Division
500 Insurance Building
212 North Market
Wichita, Kansas 67202**

RECEIVED
STATE CORPORATION COMMISSION
OCT 17 1967
10-17-1967
CONSERVATION DIVISION
Wichita, Kansas

(IF PREFERRED, MAIL IN ENVELOPE)