

TYPE

NOTICE OF INTENTION TO DRILL

C-1

TO BE FILED WITH THE STATE CORPORATION COMMISSION
PRIOR TO COMMENCEMENT OF WELL

API Number 15-153-20,201
(For office use only) 80-00

1. Operator Skelly Oil Company

Starting Date March 1, 1975

Address P. O. Box 339 - Hays, Kansas 67601

County Rawlins

2. Contractor Murfin Drilling Company

Sec 21 Twp 1 S Rge 32 ~~W~~

Address 617 Union Center - Wichita, Kansas 67202

Spot Location 800' FSL & 1000' FWL SW/4

3. Type of Equipment: Rotary Cable Tool _____

Nearest Lease Line 1050 ft.

4. Well to be Drilled for: Oil _____ Gas _____

Lease Name Wilhelm Unit

Disposal _____ Input Other _____

5. Depth of Deepest Fresh Water within 1 mile 212 ft.

6. Depth of Municipal Water Well within 3 miles NONE ft.

7. Depth to Protect all Fresh Water 300 ft.

8. Amount of Surface Casing to be set 375 ft.

Well No. 14

9. Alternate No. 1 _____ No. 2

Est. Total Depth 4200 ft.

REMARKS:

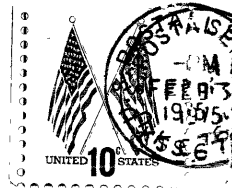
OPERATOR STATES THAT HE WILL COMPLY WITH K. S. A. 55-128

Signature of Operator



Frank Renard - Area Superintendent





State Corporation Commission of Kansas
Conservation Division
P. O. Box 17027
Wichita, Kansas 67217

RECEIVED
STATE CORPORATION COMMISSION

FEB 5 1975
2-5-1975
CONSERVATION DIVISION
Wichita, Kansas

(IF PREFERRED, MAIL IN ENVELOPE)