

FIRST
CORRECTED

FOR KCC USE:

FORM CB-1 12/93

FORM MUST BE TYPED

FORM MUST BE SIGNED

ALL BLANKS MUST BE FILLED IN

EFFECTIVE DATE: 9-13-04

DISTRICT # 3

SGA? Yes... No

State of Kansas
CATHODIC PROTECTION BOREHOLE INTENT

Must be approved by the K.C.C. sixty (60) days prior to commencing well.

Expected Spud (Starting) Date 9-17-2004 AP SE NE NW NW
OPERATOR: License # 6035 month / day year

Spot (Location) a/q/a
460' feet from South / North line of Section
1260' feet from East / West line of Section
(Circle directions from nearest outside corner boundaries)
IS SECTION REGULAR IRREGULAR?

Name: Kansas Gas Service
Address: Post Office Box 3538
City/State/Zip: Topeka, KS 66601

(Spot well on the Section Plat on Reverse Side)
County: Shawnee

Contact Person: Doug Fundis

Lease Name: Topeka Well #: #1

Phone: (785) 431-4215

Facility Name: Topeka

CONTRACTOR: License #: 32775 Amended

Ground Surface Elevation: MSL

Name: McLean's C P Installation, Inc.

Cathodic Borehole Total Depth: 170'

Type Drilling Equipment: Mud Rotary Cable
 Air Rotary Other

Depth to Bedrock: 40'

CONSTRUCTION FEATURES

WATER INFORMATION:

Amended * Length of Cathodic Surface (Non-Metallic) Casing
Planned to be set: 60' ft.

Aquifer Penetration: None Single Multiple

Amended * Length of Conductor pipe (if any?): 17 1/2" - 60' 10" - 110' ft.

Depth to bottom of fresh water: 40'

Amended * Size of the borehole (I.D.): 10" inches

Depth to bottom of usable water: 150'

Amended * Cathodic surface casing size: 20" inches

Water well within one-quarter mile: yes no

Amended * Cathodic surface casing centralizers set at depths of: 60', 20', ...

Public water supply well within one mile: yes no

Cathodic surface casing will terminate at:
 Above surface Surface Vault Below Surface Vault

Water Source for Drilling Operations:
 well farm pond stream other

Pitless casing adaptor will be used: Yes No at Depth MSL ft.

Water Well Location: MSL

Amended * Anode installation depths are: 165', 155', 145', 135', 125', 115', 105', ...

DWR Permit #: 26

Standard Dimension Ratio (SDR) is = 26
(cathodic surface OD csg. in inches / MWT in inches = SDR)

Annular space between borehole and casing will be grouted with:
 Concrete Bentonite Cement
 Neat cement Bentonite clay

Anode vent pipe will be set at: 3' ft. above surface

Anode conductor (backfill) material TYPE: SC3

Amended * Depth to BASE of Backfill installation material: 170'

* Depth to TOP of Backfill installation material: 65'

PRE-PLUG

AFFIDAVIT

MAX
TD = 170' - Do Not Exceed

The undersigned hereby affirms that the drilling, completion and eventual plugging of this well will comply with K.S.A. 55-101, et. seq. It is agreed that the following minimum requirements will be met:

1. Notify the appropriate district office prior to spudding of and again before plugging well;
2. A copy of the approved notice of intent to drill shall be posted on each drilling rig;
3. The minimum amount of cathodic surface casing as specified below shall be set by grouting to the top.
4. An agreement between the operator and the district office on plugs and placement is necessary prior to plugging;
5. The appropriate district office will be notified before well is either plugged or casing is grouted in;
6. IN ALL CASES, NOTIFY DISTRICT OFFICE PRIOR TO ANY CEMENTING.

I hereby certify that the statements made herein are true and to the best of my knowledge and belief.

Date: 9-3-04 Signature of Operator or Agent: [Signature] Title: Office

RECEIVED
KANSAS CORPORATION COMMISSION

SEP 13 2004

CONSERVATION DIVISION
WICHITA, KS

FOR KCC USE:
API # 15- 177-20010-00-00 - Alt 3
Conductor pipe required NONE feet
Minimum cathodic surface casing required 60 feet
Approved by: RJP 9.8.04/ELP 9.14.04
This authorization expires: 3-8-05
(This authorization void if drilling not started within 6 months of effective date.)
Spud date: _____ Agent: _____

Y WAS: Multiple Aquifer
IS: Single Aquifer
WAS: 170' surface pipe
IS: 60' surface pipe

- REMEMBER TO:
- File Drill Pit Application (form CDP-1) with Intent to Install;
 - File Completion Form CB-2 within 30 days of spud date;
 - Notify appropriate district office 48 hours prior to workover or re-entry;
 - Submit plugging report (CB-4) within 30 days after plugging is completed.

Mail to: KCC - Conservation Division, 130 S. Market - Room 207B, Wichita, Kansas 67202-1286.

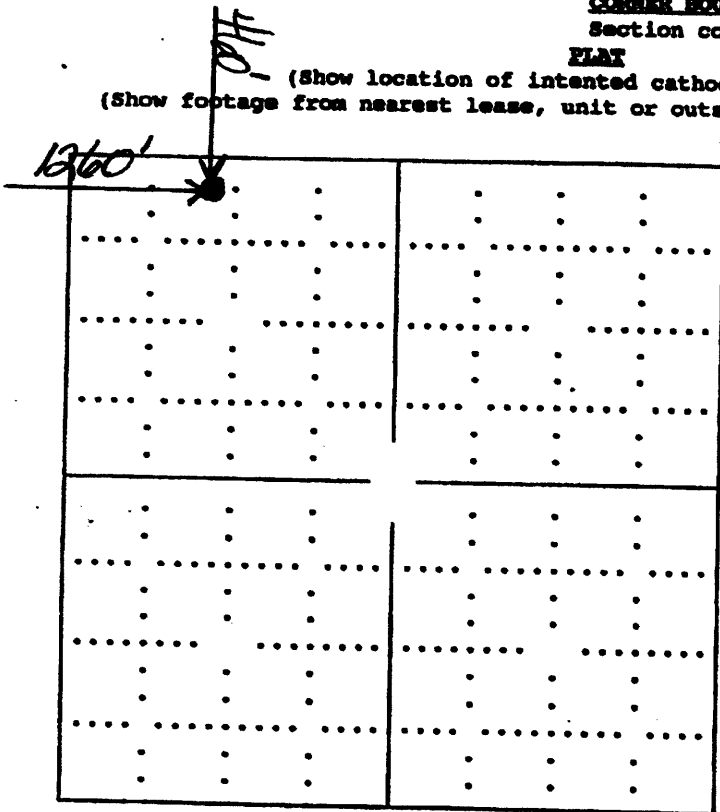
IN ALL CASES PLOT THE INTENDED WELL ON THE PLAT BELOW

Show the relationship to other wells or facilities proposed to be serviced by the intended cathodic borehole. Please show all the wells, existing cathodic boreholes, pipelines or facilities within 1/2 mile of the proposed borehole.

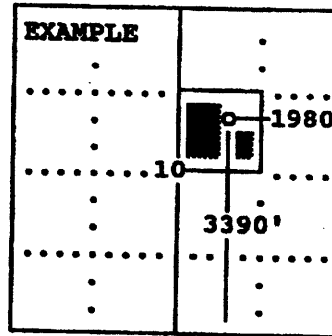
API NO. 15- _____
 OPERATOR Kansas Gas Service LOCATION OF WELL: COUNTY Shawnee
 LEASE Topeka 460' feet from south/north line of section
 WELL NUMBER #1 1,260' feet from east/west line of section
 FACILITY NAME Topeka SECTION 31 TWP 11S RG 16E

SPOT: QTR/QTR/QTR/QTR OF ACREAGE _____
 - NE - NW - SE - SW
 IS SECTION X REGULAR or _____ IRREGULAR
IF SECTION IS IRREGULAR, LOCATE WELL FROM NEAREST CORNER BOUNDARY.
 Section corner used: _____ NE _____ NW _____ SE _____ SW

PLAT
 (Show location of intended cathodic borehole.)
 (Show footage from nearest lease, unit or outside section boundary line.)



Section 31



SEWARD CO.

In plotting the proposed location of the well, you must show:

- 1) The manner in which you are using the depicted plat by identifying section lines, i.e. 1 section, 1 section with 8 surrounding sections, 4 sections, etc.;
- 2) the distance of the proposed drilling location from the section's south/north and east/west; and
- 3) the distance to the nearest lease, unit or outside section boundary line.

RECEIVED
 KANSAS CORPORATION COMMISSION

SEP 13 2004

CONSERVATION DIVISION
 WICHITA, KS