

TYPE OR PRINT

# NOTICE OF INTENTION TO DRILL

RULE 82-2-311

15-039-00096-00-00

TO BE FILED WITH THE STATE CORPORATION COMMISSION PRIOR TO COMMENCEMENT OF WELL

1. Operator Sauvage Drilling Co., Inc. Address Oberlin, Kansas
2. Lease name Harmon Well No. 1 County Decatur
3. Well Location C NE SE Sec. 21 Township 3 South Range 28 West
4. Well to be drilled 660 ft. from nearest lease line.
5. Drilling Contractor Company tools Address Oberlin, Kansas
6. Type of equipment: Rotary  Cable Tool  Approx. date operation to begin August 25 1960 on
7. Well to be drilled for Oil  Gas  Disposal  Input  Estimated Total Depth of Well 3950 ft.
8. Depth of deepest fresh water well within one mile of location 90 ft. If none exists, write NONE.
9. Ground elevation at location is approx. \_\_\_\_\_ ft. higher or \_\_\_\_\_ ft. lower than ground elevation at water well.
10. Depth of the deepest municipal water well within three miles of location none ft. If none exists, write NONE
  
11. Operator states that he will set surface pipe to at least 25 ft. below all Tertiary or unconsolidated deposits and, taking into consideration differences in ground elevations, that the minimum depth necessary, to the best of his knowledge and belief, to protect all fresh water zones is 100 ft. and operator agrees to set surface pipe at this location to a depth of not less than 200 ft. Alternate 1  Alternate 2 .

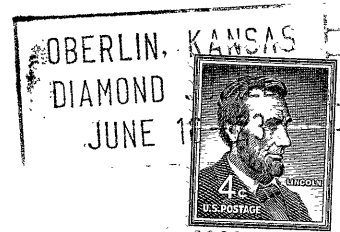
REMARKS:

SAUVAGE DRILLING CO., INC.

Signature of Operator By

W. W. Sauvage





**State Corporation Commission of Kansas  
Conservation Division  
500 Insurance Building  
212 North Market  
Wichita 2, Kansas**

**RECEIVED**  
STATE CORPORATION COMMISSION  
AUG 9 1960 8-9-60  
CONSERVATION DIVISION  
Wichita, Kansas

**(IF PREFERRED, MAIL IN ENVELOPE)**