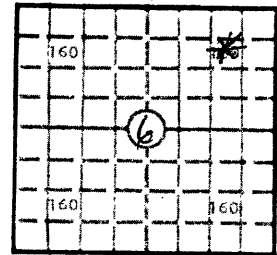


KANSAS

WELL COMPLETION REPORT AND
DRILLER'S LOGS. 6 T. 3S R. 29 ~~W~~

Loc. NE, NE

County Decatur

640 Acres
N

Locate well correctly

Elev.: Gr. 2759'

DF 2763' KB 2764'

API No. 15 — 039 — 20579-0000
County NumberOperator Multistate Oil Properties c/o
Tenneco Oil CompanyAddress Suite 139, Ciudad Bldg., 3000 United Founders Blvd.
Oklahoma City, Oklahoma, 73112

Well No. 4-6 Lease Name Amanda

Footage Location
830' feet from (N) ~~W~~ line 1207' feet from (E) ~~W~~ line

Principal Contractor Abercrombie Geologist Mark Young

Spud Date 5-2-81 Date Completed 6-22-81 Total Depth 4030' P.B.T.D. 3968'

Directional Deviation Oil and/or Gas Purchaser
Koch Oil Company

CASING RECORD

Report of all strings set— surface, intermediate, production, etc.

Purpose of string	Size hole drilled	Size casing set (in O.D.)	Weight lbs/ft.	Setting depth	Type cement	Sacks	Type and percent additives
Surface	12-1/4"	8-5/8"	24"	666.80	60/40 Poz Common	200 200	3% CC, 2% Gel 3% CC, 2% Gel
Production	7-7/8"	5-1/2"	15.50	4031	50/50 Poz Class A 60/40 Poz	50 175 425	2% CACL ₂ 7-1/2# Gilsonite 2% Gel + Salt

LINER RECORD

PERFORATION RECORD

Top, ft.	Bottom, ft.	Sacks cement	Shots per ft.	Size & type	Depth interval
TUBING RECORD				4" Gun	3792-96
Size	Setting depth	Packer set at			
2-7/8"	3941				

ACID, FRACTURE, SHOT, CEMENT SQUEEZE RECORD

Amount and kind of material used	Depth interval treated
1st Stage - 300 Gal. MCA (15% MCA + 10% Acetic Acid + Clay Stabilizer + Inhibitor)	3792-96
2nd Stage - 800 Gal. Demulsion Acid	

INITIAL PRODUCTION

Date of first production 6-22-81	Producing method (flowing, pumping, gas lift, etc.) Pumping	<div style="text-align: right;"> RECEIVED STATE CORPORATION COMMISSION 07-20-81 WICHITA, KANSAS </div>			
RATE OF PRODUCTION PER 24 HOURS	Oil 66 bbls.	Gas 0 MCF	Water 10 bbls.	Gas-oil ratio 20	CFPB
Disposition of gas (vented, used on lease or sold)	Sold	Producing interval(s) (Pollnow) Lansing	CONSERVATION DIVISION Wichita, Kansas		

INSTRUCTIONS: As provided in KCC Rule 82-2-125, within 90 days after completion of a well, one completed copy of this Drillers Log shall be transmitted to the State Geological Survey of Kansas, 4150 Monroe Street, Wichita, Kansas 67209. Copies of this form are available from the Conservation Division, State Corporation Commission, 245 No. Water, Wichita, Kansas 67202. Phone AC 316-522-2206. If confidential custody is desired, please note Rule 82-2-125. Drillers Logs will be on an open file in the Oil and Gas Division, State Geological Survey of Kansas, Lawrence, Kansas 66044.

Operator

Tenneco Oil Company

DESIGNATE TYPE OF COMP.: OIL, GAS,
DRY HOLE, SWDW, ETC.:

Well No.

4-6

Lease Name

Amanda

Oil

S 6 T 3S R 29 ^{FW}_W

NE, NE, 830' FNL, 1207' FEL

WELL LOG

Show all important zones of porosity and contents thereof; cored intervals, and all drill-stem tests, including depth interval tested, cushion used, time tool open, flowing and shut-in pressures, and recoveries.

SHOW GEOLOGICAL MARKERS, LOGS RUN,
OR OTHER DESCRIPTIVE INFORMATION.

FORMATION DESCRIPTION, CONTENTS, ETC.

TOP

BOTTOM

NAME

DEPTH

Anhydrite

2503

GR

Base

2535

CCL

Severy

3587

CBL

Topeka

3612

Oread

3711

Toronto

3760

Lansing

3772

BMC

3986

RTD

4030

USE ADDITIONAL SHEETS, IF NECESSARY, TO COMPLETE WELL RECORD.

Date Received

Carolyn S. Arnold

Signature

Carolyn S. Arnold

Production Analyst

Title

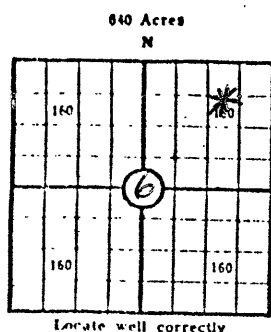
July 14, 1981

Date

KANSAS CORPORATION COMMISSION

WELL RECORD

(Mail to Kansas Geological Survey, 4150 Monroe Street, Wichita, Kansas 67209)



Lease Name: Amanda Well No. 4-6
Well Located: NE, NE, 830' FNL, 1207' FEL
Decatur County SEC 6 TWP 3S RGE 29W
Operator: Tenneco Oil Company
Address: Suite 139, Ciudad Bldg., 3000 United Founders Blvd., Okla.
Elevation: Ground 2759' D.F. 2763' City Okla. 73112
Type Well: (Oil, gas, dry hole) Oil

Drilling Commenced: 5-21 19 81 Drilling Completed: 6-22 19 81
Well Completed: 6-22 19 81 Total Depth 4030
Initial Production: 66 BOPD, 10 BWPD

Casing Record

Size: 8-5/8" Set at 666.80 Size: Set at
Size: 5-1/2" Set at 4031 Size: Set at

Liner Record

Size: _____ Set from _____ To _____

Cementing

Casing Size	Sacks	Type Cement and Additives
8-5/8"	200	60/40 Poz, 3% CC, 2% Gel
5-1/2"	200	Common, 3% CC, 2% Gel
	50	50/50 Poz, 2% CACL ₂ 7-1/2# Gilsomite
	425	60/40 Poz
	175	Class A, 2% Gel + Salt

Perforations

<u>Formation</u>	<u>Perforated Interval and Number Shots</u>
(Pollnow) Lansing	3792-96

Electric Log Run (Show type log and depths covered)

GR	CBL
CCL	

(Fill in formation and related information on reverse side)

RECEIVED
STATE CORPORATION COMMISSION

1944 20 30

CONSERVATION DIVISION
Wichita, Kansas

FORMATION, TESTING AND COMPLETION RECORD

Formation	Top	Bottom	Show Drill Stem Tests, Well Stimulation and Production Tests
Anhydrite	2503		DST #1 - 3732-3790
Base	2535		IHP 1983
Severy	3587		FHP 1943
Topeka	3612		IFP 90-171
Oread	3711		FFP 222-373
Toranto	3760		ISIP 1364
Lansing	3772		FSIP 1334
BNC	3986		
RTD	4030		Rec. 868' MW
			DST #2 - 3785-3809
			IHP 1963
			FHP 1943
			IFP 70-101
			FFP 141-171
			ISIP 262
			FSIP 262
			Rec. 372' MCU