

TYPE OR PRINT

NOTICE OF INTENTION TO DRILL

15-039-20,037-00-00

TO BE FILED WITH THE STATE CORPORATION COMMISSION PRIOR TO COMMENCEMENT OF WELL



1. Operator W. W. Sauvage Address Oberlin, Kansas
2. Lease name Sauvage Well No. 1 County Decatur
3. Well Location SW SW Sec. 10 Township 3 Range 29
4. Well to be drilled 660 ft. from nearest lease line.
5. Drilling Contractor Sauvage Drilling, inc. Address Oberlin, Kansas
6. Type of equipment: Rotary Cable Tool Approx. date operation to begin Weather breaks, 1968
7. Well to be drilled for Oil Gas Disposal Input Estimated Total Depth of Well 3,900 ft
8. Depth of deepest fresh water well within one mile of location 63 ft. If none exists, write NONE None
9. Ground elevation at location is approx. 2675 ft. higher or Higher ft. lower than ground elevation at water well.
10. Depth of the deepest municipal water well within three miles of location 45 ft. ft. If none exists, write NONE None
11. Operator states that he will set surface pipe at least 25 ft. below all Tertiary or unconsolidated deposits and, taking into consideration differences in ground elevations, that the minimum depth necessary, to the best of his knowledge and belief, to protect all fresh water zones is 40 ft. and operator agrees to set surface pipe at this location to a depth of not less than 200 ~~40~~ ft. Alternate 1 Alternate 2 .

REMARKS:

Signature of Operator

30-2109-519A



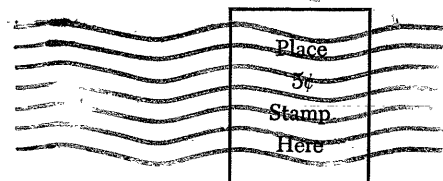
1-64-25M

RECEIVED
STATE CORPORATION COMMISSION

JAN 29 1968
CONSERVATION DIVISION
Wichita, Kansas

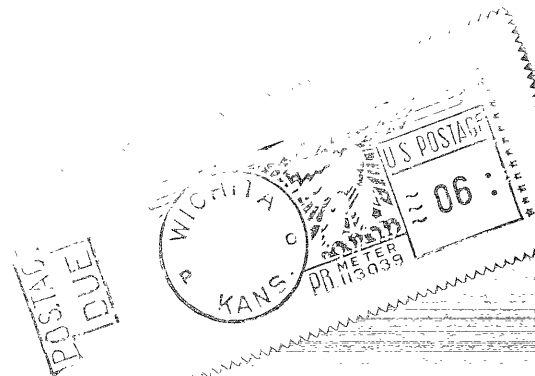
1-29-68

POSTAGE DUE 6 CENTS



State Corporation Commission of Kansas
Conservation Division
500 Insurance Building
212 North Market
Wichita, Kansas 67202

(IF PREFERRED, MAIL IN ENVELOPE)





State Corporation Commission

CONSERVATION DIVISION

(Oil, Gas and Water)
300 Insurance Bldg. 212 N. Market
WICHITA, KANSAS 67202

ROBERT B. DOCKING Governor
WILLIAM L. MITCHELL Chairman
JAMES O. GREENLEAF Commissioner
DALE E. SAFFELS Commissioner
RAYMOND B. HARVEY Secretary
E. EDWARD JOHNSON Gen. Counsel

RECEIVED
STATE CORPORATION COMMISSION
FEB 2 - 1968
CONSERVATION DIVISION
WICHITA, KANSAS

January 30, 1968

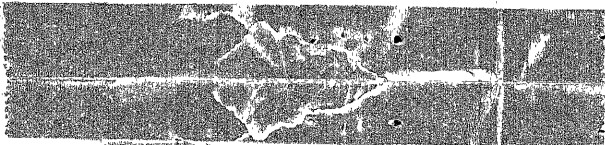
Mr. W. V. Sauvage
Merida, January 27, 1968

Dear Mr. Sauvage:

We have this date received your notice of application for well near Savage Well No. 1, located in the SW 1/4 Sec. 11, T. 26 N., R. 20 W., DeWette County, Kansas. Under Paragraph "A" of the permit used, you indicated that the minimum depth necessary, in your opinion, for your knowledge and belief, to protect a 3 inch water main to be set at your indicated surface pipe shall be 40 feet of surface pipe will be set.

It is to advise you that the surface pipe requirement in DeWette County is to protect through the District regulation with a minimum of 200 feet of surface pipe to set at all areas in the county for the protection of the public and fresh water supplies.

Under the circumstances you are to drill this well and set only 40 feet of surface pipe, and we suggest that you comply with the requirements and set at least a minimum of 200 feet of surface pipe.



Truly yours,

S. B. Greider

SSG:mjr

cc: Mr. Bruce F. Latta, Director & Chief Geologist
The Kansas State Department of Health
Topeka, Kansas

Mr. Marvin W. Glotzbach, District Geologist
Hays, Kansas

I am sorry this was a mistake by my secretary, surface pipe will be set for at least 200 feet. The postage stamp was put on the reverse side or front of the card and apparently unnoticed by the postal department.

W. V. Sauvage