

FOR KCC USE:

FORM CB-1 12/93

EFFECTIVE DATE: 9.13.04

FORM MUST BE TYPED

DISTRICT # 3

State of Kansas
CATHODIC PROTECTION BOREHOLE INTENT

FORM MUST BE SIGNED

SEA? Yes No

Must be approved by the K.C.C. sixty (60) days prior to commencing well.

ALL BLANKS MUST BE FILLED IN

Expected Spud (Starting) Date 9-17-2004
month day year

Spot (Location) q/q/a AP SE NE NW NW Sec 31 Twp 11S Rg 16 East
460' feet from South / North line of Section
1,260' feet from East / West line of Section

OPERATOR: License # 6035

Name: Kansas Gas Service
Address: Post Office Box 3538
City/State/Zip: Topeka, KS 66601

(Circle directions from nearest outside corner boundaries)
IS SECTION X REGULAR IRREGULAR?
(Spot well on the Section Plat on Reverse Side)
County: Shawnee

Contact Person: Doug Fundis

Lease Name: Topeka Well #: #1

Phone: (785) 431-4215

Facility Name: Topeka

CONTRACTOR: License #: 32775

Ground Surface Elevation: 970' MSL
Cathodic Borehole Total Depth: 210' ft.
Depth to Bedrock: 40' ft.

Name: McLean's C P Installation, Inc.

Type Drilling Equipment: X Mud Rotary Cable
Air Rotary Other

WATER INFORMATION:

CONSTRUCTION FEATURES
Length of Cathodic Surface (Non-Metallic) Casing
Planned to be set: 120' 170' RSP/KCC
Length of Conductor pipe (if any?): 17 1/2" 10" - 90'
Size of the borehole (I.D.): 10" inches
Cathodic surface casing size: 120'; .80'; 40'; ...

Aquifer Penetration: None Single X Multiple
Depth to bottom of fresh water: 150'
Depth to bottom of usable water: 150'
Water well within one-quarter mile: X yes no
Public water supply well within one mile: yes X no
Water Source for Drilling Operations:
well farm pond stream X other
Water Well Location:
DWR Permit #:
Standard Dimension Ratio (SDR) is = 26
(cathodic surface OD casing in inches / MWT in inches = SDR)

Cathodic surface casing will terminate at:
Above surface Surface Vault X Below Surface Vault

Annular space between borehole and casing will be grouted
with: Concrete Bentonite Cement
X Heat cement Bentonite clay

Pitless casing adaptor will be used: Yes No at Depth ...ft.

Anode vent pipe will be set at: 3 ft. above surface

Anode installation depths are: 205'; 195'; 185'; 175';
165'; 155'; 145'; RSP/KCC

Anode conductor (backfill) material TYPE: SC3

Depth to BASE of Backfill installation material: 210'
Depth to TOP of Backfill installation material: 175' RSP/KCC

AFFIDAVIT

The undersigned hereby affirms that the drilling, completion and eventual plugging of this well will comply with K.S.A. 55-101, et. seq. It is agreed that the following minimum requirements will be met:

- 1. Notify the appropriate district office prior to spudding of and again before plugging well;
- 2. A copy of the approved notice of intent to drill shall be posted on each drilling rig;
- 3. The minimum amount of cathodic surface casing as specified below shall be set by grouting to the top.
- 4. An agreement between the operator and the district office on plugs and placement is necessary prior to plugging;
- 5. The appropriate district office will be notified before well is either plugged or casing is grouted in;
- 6. IN ALL CASES, NOTIFY DISTRICT OFFICE PRIOR TO ANY CEMENTING.

I hereby certify that the statements made herein are true and to the best of my knowledge and belief.
Date: 9-3-04 Signature of Operator or Agent: [Signature] Title: [Signature]

PER TABLE 1
FOR WELLS LOCATED
WITHIN 1 MILE OF KANSAS RIVER
SURFACE
CASING MUST
BE SET TO 750'
ABOVE SEA LEVEL

FOR KCC USE:
API # 15- 177-20010-000 A1-3
Conductor pipe required NONE feet
Minimum cathodic surface casing required 170 feet
Approved by: RSP 9-8-04
This authorization expires: 3-8-05
(This authorization void if drilling not started within 6 months of effective date.)
Spud date: Agent:

RECEIVED
KANSAS CORPORATION COMMISSION
SEP 07 2004
CONSERVATION DIVISION
WICHITA, KS

- REMEMBER TO:
- File Drill Pit Application (form CDP-1) with Intent to Install;
 - File Completion Form CB-2 within 30 days of spud date;
 - Notify appropriate district office 48 hours prior to workover or re-entry;
 - Submit plugging report (CB-4) within 30 days after plugging is completed.

Mail to: KCC - Conservation Division, 130 S. Market - Room 207B, Wichita, Kansas 67202-1286.

31
11
16E

IN ALL CASES PLOT THE INTENDED WELL ON THE PLAT BELOW

Show the relationship to other wells or facilities proposed to be serviced by the intended cathodic borehole. Please show all the wells, existing cathodic boreholes, pipelines or facilities within 1/2 mile of the proposed borehole.

API NO. 15- _____
 OPERATOR Kansas Gas Service
 LEASE Topeka
 WELL NUMBER #1
 FACILITY NAME Topeka

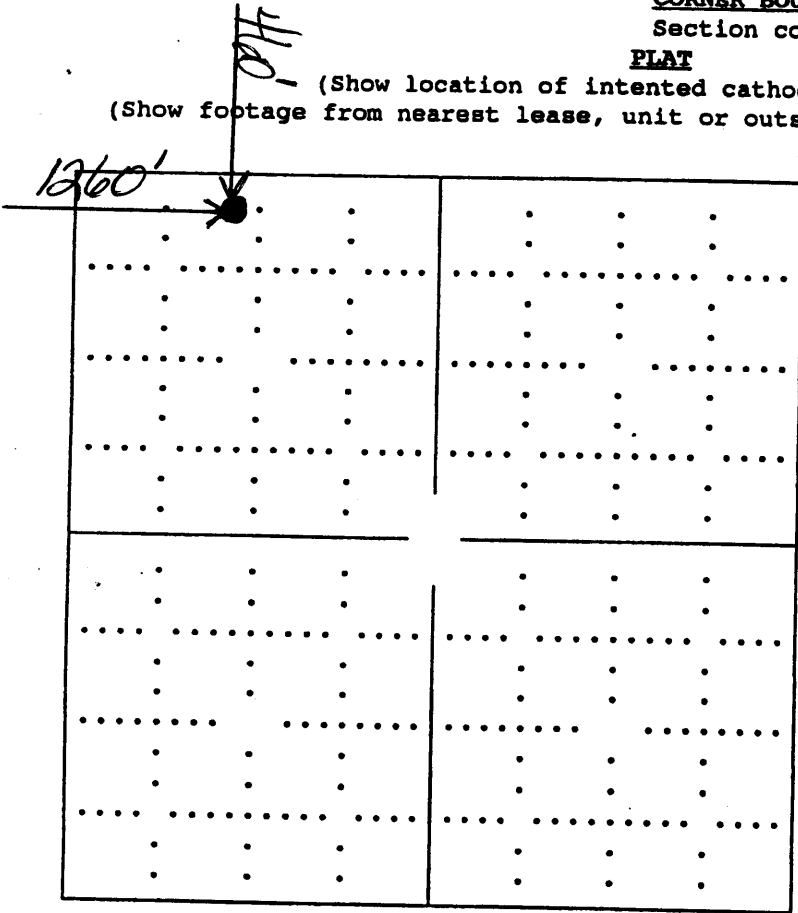
LOCATION OF WELL: COUNTY Shawnee
460' feet from south/north line of section
1,260' feet from east/west line of section
 SECTION 31 TWP 11S RG 16E

SPOT: QTR/QTR/QTR/QTR OF ACREAGE
 - NE - NW - NW

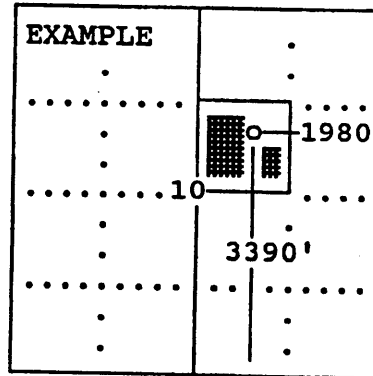
IS SECTION X REGULAR or _____ IRREGULAR
IF SECTION IS IRREGULAR, LOCATE WELL FROM NEAREST CORNER BOUNDARY.

Section corner used: _____ NE _____ NW _____ SE _____ SW
PLAT

(Show location of intended cathodic borehole.)
 (Show footage from nearest lease, unit or outside section boundary line.)



Section 31



SEWARD CO.

In plotting the proposed location of the well, you must show:

- 1) The manner in which you are using the depicted plat by identifying section lines, i.e. 1 section, 1 section with 8 surrounding sections, 4 sections, etc.;
- 2) the distance of the proposed drilling location from the section's south/north and east/west; and
- 3) the distance to the nearest lease, unit or outside section boundary line.