

TYPE OR PRINT

**NOTICE OF INTENTION TO DRILL**

C-1

15-147-30107-00-00

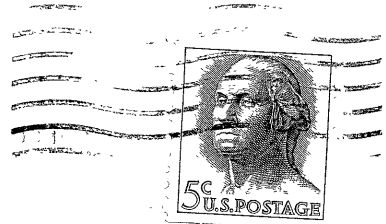
**TO BE FILED WITH THE STATE CORPORATION COMMISSION PRIOR TO COMMENCEMENT OF WELL**

1. Operator PETROLEUM MANAGEMENT, INC. Address 1515 Wichita Plaza, Wichita, Kansas
2. Lease name SUTLEY Well No. #2 County Phillips
3. Well Location SW NE Sec. 29 Township 4S Range 18W
4. Well to be drilled 660 ft. from nearest lease line.
5. Drilling Contractor Red Tiger Drilling Co. Address 1720 Wichita Plaza, Wichita, Kansas
6. Type of equipment: Rotary  Cable Tool  Approx. date operation to begin August 26 196 5
7. Well to be drilled for Oil  Gas  Disposal  Input  Estimated Total Depth of Well 3500 ft.
8. Depth of deepest fresh water well within one mile of location unknown ft. If none exists, write NONE \_\_\_\_\_.
9. Ground elevation at location is approx. \_\_\_\_\_ ft. higher or \_\_\_\_\_ ft. lower than ground elevation at water well.
10. Depth of the deepest municipal water well within three miles of location 60 ft. If none exists, write NONE \_\_\_\_\_.
11. Operator states that he will set surface pipe at least 25 ft. below all Tertiary or unconsolidated deposits and, taking into consideration differences in ground elevations, that the minimum depth necessary, to the best of his knowledge and belief, to protect all fresh water zones is 175 ft. and operator agrees to set surface pipe at this location to a depth of not less than 175 ft. Alternate 1  Alternate 2 .

REMARKS:

Signature of Operator \_\_\_\_\_





**State Corporation Commission of Kansas  
 Conservation Division  
 500 Insurance Building  
 212 North Market  
 Wichita, Kansas 67202**

**RECEIVED**  
 STATE CORPORATION COMMISSION

AUG 26 1965

8-26-65

CONSERVATION DIVISION  
 Wichita, Kansas

(IF PREFERRED, MAIL IN ENVELOPE)