

Notice: Fill out COMPLETELY and return to Conservation Division at the address below within 60 days from plugging date.

KANSAS CORPORATION COMMISSION
OIL & GAS CONSERVATION DIVISION
WELL PLUGGING RECORD
K.A.R. 82-3-117

RECEIVED
KANSAS CORPORATION COMMISSION

SEP 23 2004

Form CP-4

December 2003

Type or Print on this Form
Form must be Signed
All blanks must be Filled

CONSERVATION DIVISION
WICHITA, KS

30350-00-01

Lease Operator: Northstar Investments, Inc.

Address: 13735 Pinnacle Drive - Wichita, KS 67230

Phone: (316) 733-8996 Operator License #: 30601

Type of Well: ENHR Docket #: E-23,006
(Oil, Gas D&A, SWD, ENHR, Water Supply Well, Cathodic, Other) (If SWD or ENHR)

The plugging proposal was approved on: 01/20/04 (Date)

by: District #2 - Doug Lewis (KCC District Agent's Name)

Is ACO-1 filed? Yes No If not, is well log attached? Yes No

Producing Formation(s): List All (If needed attach another sheet)
Bartlesville Sand Depth to Top: 2464' Bottom: 2483' T.D. 2605'
N/A Depth to Top: N/A Bottom: N/A T.D. N/A
N/A Depth to Top: N/A Bottom: N/A T.D. N/A

API Number: 15 - 015-75,943

Lease Name: Liggett

Well Number: #W-1

Spot Location (QQQQ): NE - NW - NW -
400' Feet from North / South Section Line

1190' Feet from East / West Section Line

Sec. 16 Twp. 26S S. R. 08 East West

County: Butler

Date Well Completed: 01/20/66 *original date*

Plugging Commenced: 01/26/04 (Plugging of Well)

Plugging Completed: 01/28/04 (Top off to surface)

Show depth and thickness of all water, oil and gas formations.

Oil, Gas or Water Records		Casing Record (Surface Conductor & Production)				
Formation	Content	From	To	Size	Put In	Pulled Out
Bartlesville 2464'-2783'	Oil & Water	Surface	120'	8 5/8"	120'	None
		Surface	2605'	4 1/2"	2605'	None
		Surface	2400'	2 3/8"	2400'	750'

Describe in detail the manner in which the well is plugged, indicating where the mud fluid was placed and the method or methods used in introducing it into the hole. If cement or other plugs were used, state the character of same depth placed from (bottom), to (top) for each plug set.

Ran 2 3/8" tubing to 500' w/ production packer. Mixed & pumped 50 sxs of cement (60/40, 4% gel, 2% cc) and displaced to 750'.
Pulled packer, waited 1 hour and ran wire line. Didn't find cement until 750'. Ran back in with 2 3/8" tubing to 700' and mixed cement.
Pumped 77 sxs of cement (60/40, 4% gel) to surface. Pulled tubing out and tied on to the annulus. Pumped 148 sxs of cement (60/40, 4% gel) until annulus pressured up to 500# and held. Shut well in. Topped off well per Dave Wertz (District #2) on 01/27/04.

Name of Plugging Contractor: United Cementing & Acid Company, Inc. License #: #30437

Address: P.O. Box #2444 - El Dorado, KS 67042

Name of Party Responsible for Plugging Fees: Northstar Investments, Inc.

State of Kansas County, Sedgwick, ss.

Jeffrey A. Burk, Agent for Northstar Investments, Inc. (Employee of Operator) or (Operator) on above-described well, being first duly

sworn on oath, says: That I have knowledge of the facts statements, and matters herein contained, and the log of the above-described well is as filed, and the same are true and correct, so help me God.

 RICHARD A. PAPE, JR.
Notary Public - State of Kansas
My Appt. Expires 8/1/08

(Signature) [Signature]
(Address) 110 South Main, Suite #510 - Wichita, KS 67202

SUBSCRIBED and SWORN TO before me this 24th day of September, 20 04

[Signature] Notary Public My Commission Expires: 8/1/08

Mail to: KCC - Conservation Division, 130 S. Market - Room 2078, Wichita, Kansas 67202

Burk



United Cementing and Acid Co., Inc.

RECEIVED
KANSAS CORPORATION COMMISSION

SERVICE TICKET

SEP 23 2004

✓ 5086

Oil Well Cementing & Acidizing
(316) 321-4680 • 800-794-0187 • FAX (316) 321-4720
2510 West 6th Street • El Dorado, KS 67042

CONSERVATION DIVISION
WICHITA, KS

DATE 1-21-04

COUNTY PA CITY _____

CHARGE TO North Star

ADDRESS _____ CITY _____ ST _____ ZIP _____

LEASE & WELL NO. Liggett # W1 CONTRACTOR Sam's Well Service

KIND OF JOB Pressure Test SEC. 16 TWP. 26 S RNG. 8 E

DIR. TO LOC. Rosalie East 7:00 (OLD) NEW

Quantity	MATERIAL USED	Serv. Charge	
	<u>2 hrs</u>		<u>253.00</u>
	BULK CHARGE		
	BULK TRK. MILES		
	PUMP TRK. MILES		<u>NK</u>
	PLUGS		
		<u>105.30</u>	SALES TAX <u>13.41</u>
			TOTAL <u>216.41</u>

T.D. _____ CSG. SET AT _____ VOLUME _____
 SIZE HOLE _____ TBG SET AT _____ VOLUME _____
 MAX. PRESS. _____ SIZE PIPE _____
 PLUG DEPTH _____ PKER DEPTH _____
 PLUG USED _____ TIME FINISHED 11:00

REMARKS:
VIA TUBING PEG UP + Held

NAME		EQUIPMENT USED	
NAME	UNIT NO.	NAME	UNIT NO.
<u>Phillip Malone</u>	<u>March Pump P10</u>		
<u>Sam Thomas</u>	<u>44</u>		

CEMENTER OR TREATER _____ OWNER'S REP. _____



United Cementing and Acid Co., Inc.

Oil Well Cementing & Acidizing
 (316) 321-4680 • 800-794-0187 • FAX (316) 321-4720
 2510 West 6th Street • El Dorado, KS 67042

RECEIVED SERVICE TICKET
 KANSAS CORPORATION COMMISSION
 SEP 23 2004 5089

CONSERVATION DIVISION WICHITA, KS
 COUNTY Butler CITY _____
 DATE 1-26-04

CHARGE TO North Star
 ADDRESS _____ CITY _____ ST _____ ZIP _____
 LEASE & WELL NO. Liggett W#1 CONTRACTOR Sam's Well Service
 KIND OF JOB Old hole plug SEC. 16 TWP. 26S RNG. 8E
 DIR. TO LOC. Rosela, 4E, 2S, Into 9:45 OLD NEW

Quantity	MATERIAL USED	Serv. Charge	
275 SX	60/40 4% gel @ 4.99		482.00
11 SX	gel @ 9.70		106.70
2 SX	calcium chloride @ 26.65		53.30
	PROD. PKR - Kental		200.00
250 250 SX	BULK CHARGE		282.24
20	BULK TRK. MILES 14.40 ton		210.24
20	PUMP TRK. MILES		41.00
	PLUGS		
		0.530 SALES TAX	1.32
		TOTAL	1413.24

T.D. _____ CSG. SET AT _____ VOLUME 28107.30
 SIZE HOLE _____ TBG SET AT _____ VOLUME _____
 MAX. PRESS. _____ SIZE PIPE _____
 PLUG DEPTH _____ PKER DEPTH _____
 PLUG USED _____ TIME FINISHED 4:45

REMARKS: Ran 2" with a "prod packer" 4 1/2" to 500ft. Mix & pump 50 SX 60/40 4% gel with 2 SX calcium chloride, and disp. to 750ft. Pulled packer out, 1 hour ran a wire line and did not hit cement. ran 2" to 700 ft mix & pump 77 SX 60/40 4% gel to surface, pulled 2" tubing out, tied on to the 4 1/2" mixed & pumped 148 SX 60/40 4% gel till press, up to 500 ft and shut in

EQUIPMENT USED
 NAME UNIT NO. NAME UNIT NO.
Phillip Malone P-10 _____ Jerry Hudson B-7 _____
James K Thomas #44 _____
 CEMENTER OR TREATER OWNER'S REP.

JOHNSON JET
SERVICE CO.

Radioactivity Log

COMPANY:
WELL:
FIELD:
LOCATION:
COUNTY:
STATE:

COMPANY: E.C. Bribach
WELL: Liggett # 1
FIELD: Salliyards
LOCATION:
COUNTY: Butler
STATE: Kansas

LOG ZERO: 5' A.G.L.
DRLG. ZERO:
PERM. DATUM:
ELEV.
ELEV.
ELEV.

TYPE OF LOG: Gamma-Ray
RUN NO.: One
DATE: 12-21-65
TOTAL DEPTH (DRILLER): 2596
EFFECTIVE DEPTH (DRILLER): 2596
TOP OF LOGGED INTERVAL: 1200
BOTTOM OF LOGGED INTERVAL: 2596
TYPE OF FLUID IN HOLE: Water
FLUID LEVEL:
MAXIMUM RECORDED TEMP:
SOURCE STRENGTH & TYPE: 300 M111
SOURCE SPACING—IN: 18"
LENGTH OF MEAS. DEVICE—IN: 4"
CONSTANT—IN: 1 3/4"
COUNTING SPEED FT./MIN: 2
STATISTICAL VARIATION—IN: 20
SENSITIVITY REFERENCE:

RECEIVED
KANSAS CORPORATION COMMISSION
SEP 23 2004
CONSERVATION DIVISION
WICHITA, KS

RECORDED BY: Jenkins
CHECKED BY: Voth
BIT SIZE: 4 1/2
CASING WT.—LB.: 92
WELL RECORD FROM WELL RECORD FROM LOG

REMARKS OR OTHER DATA

Log Measurement is 9' Shallow To Drlg. Measurement & Pipe Tally

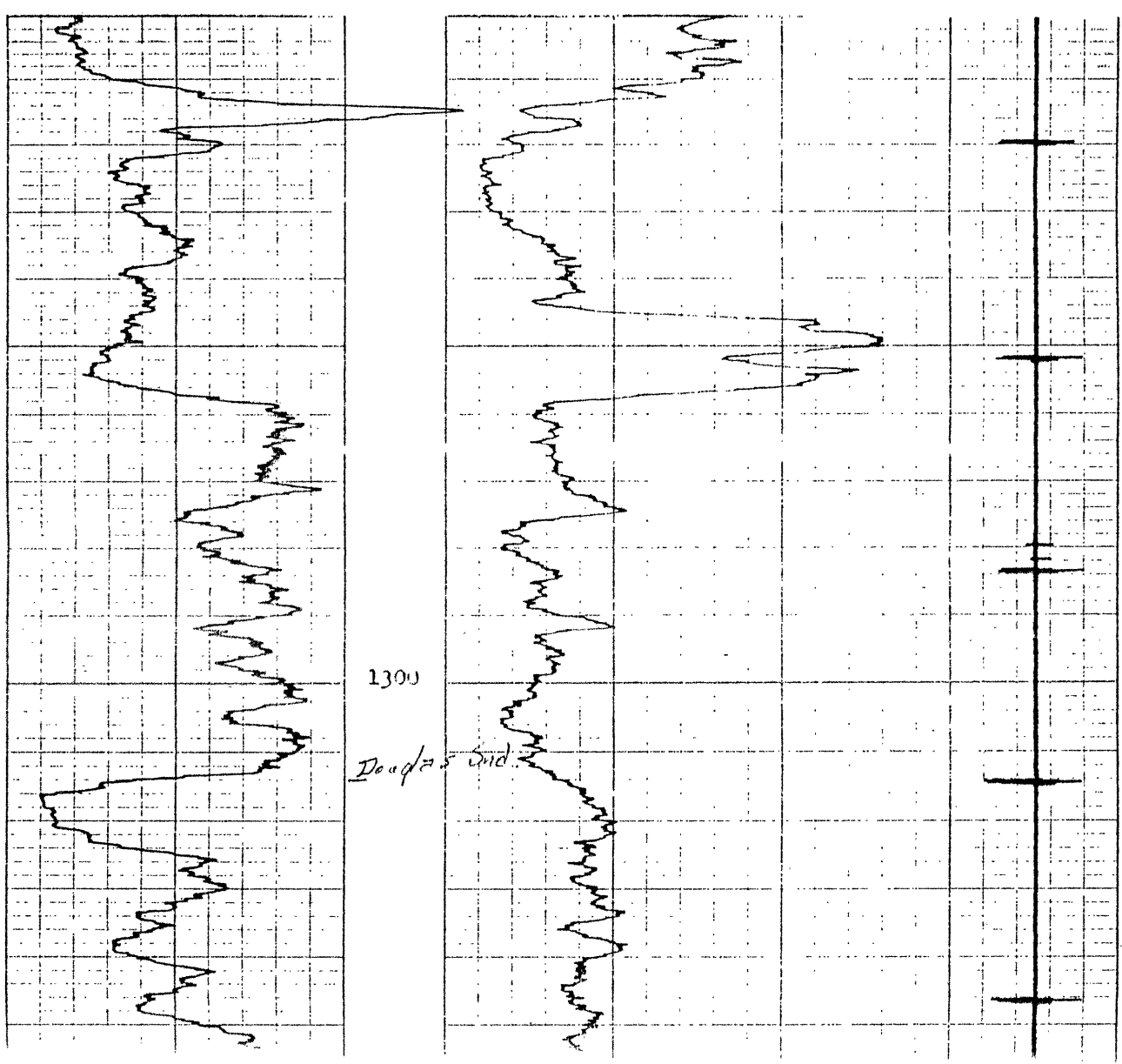
GAMMA RAY

NEUTRON

→
RADIATION INTENSITY INCREASES

→
RADIATION INTENSITY INCREASES

CASING & COLLAR LOG DEPTH



No. TCI: 2179

PRINTED IN U.S.A.

GRAND-LOG CORPORATION, MEMPHIS, TENN.

REMCO -SAPI

GRAPHIC CORP'S CORPORATION BUFFALO, N.Y.

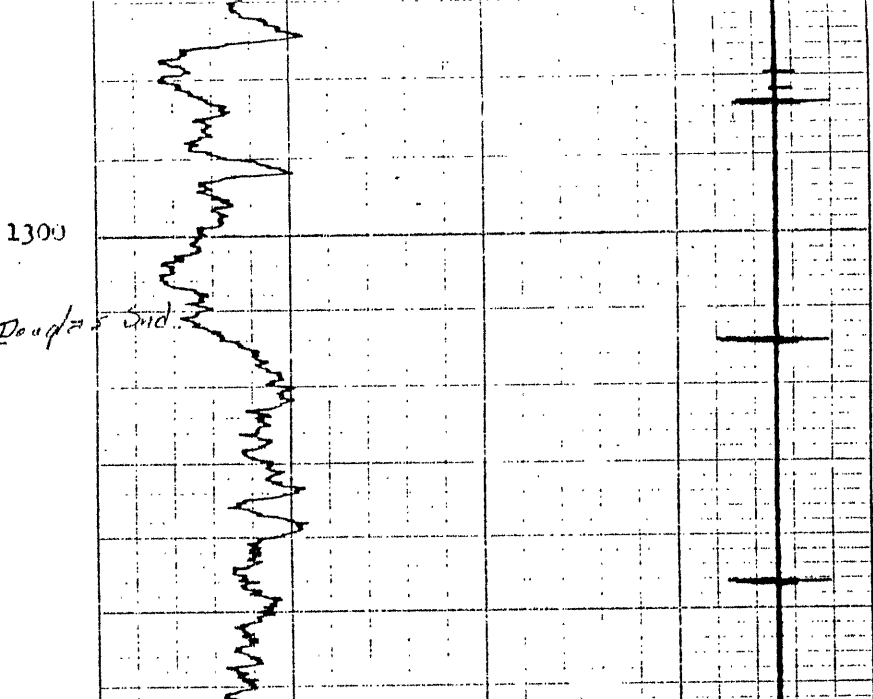
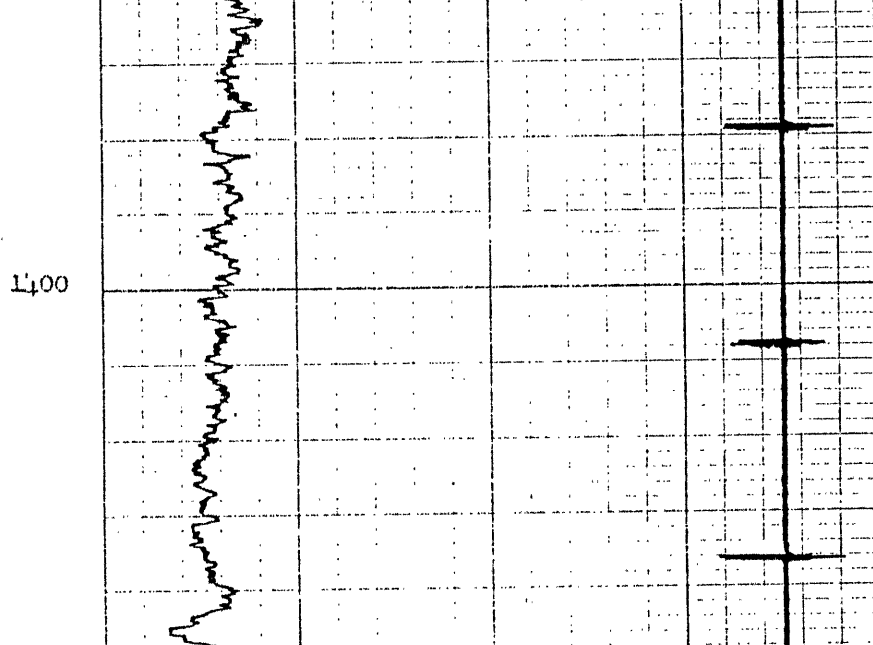
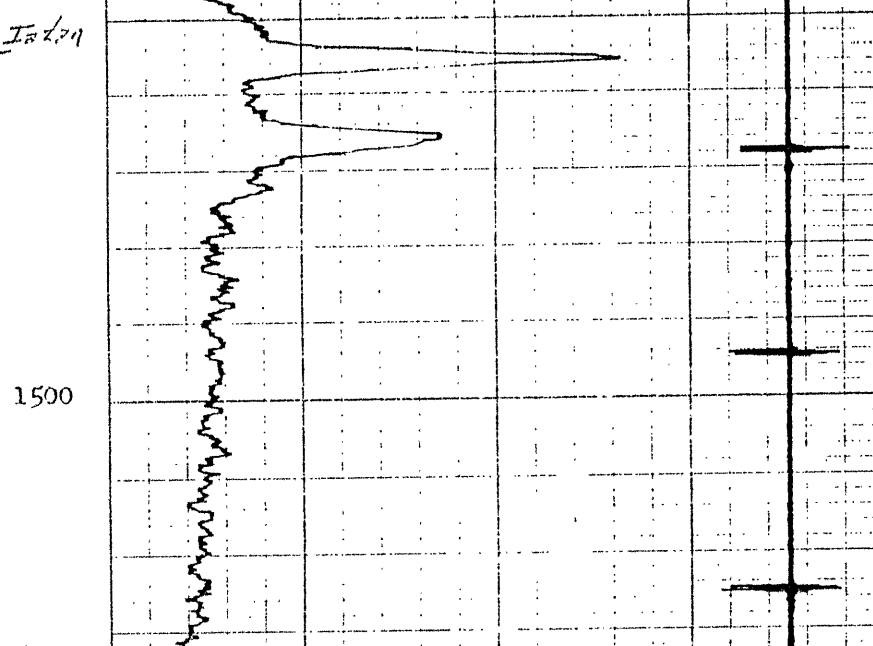
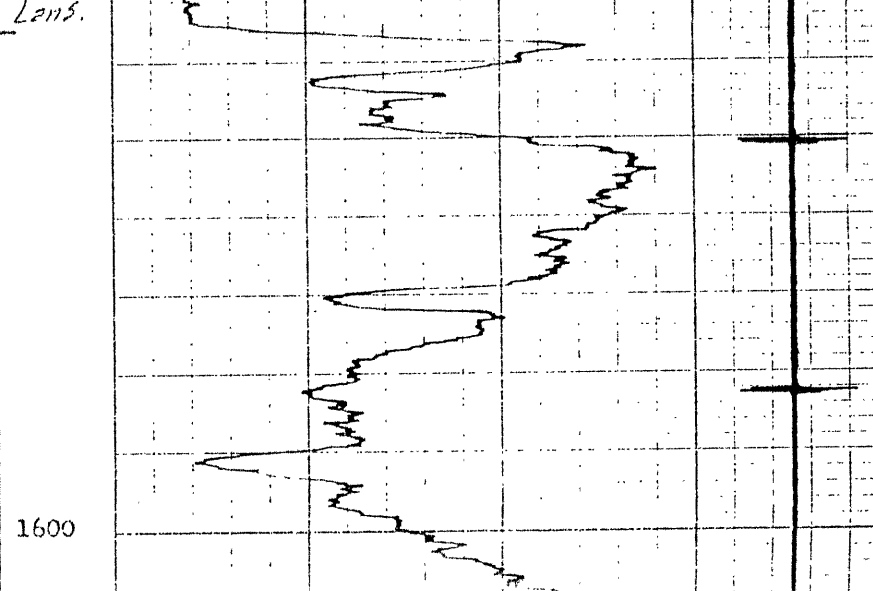
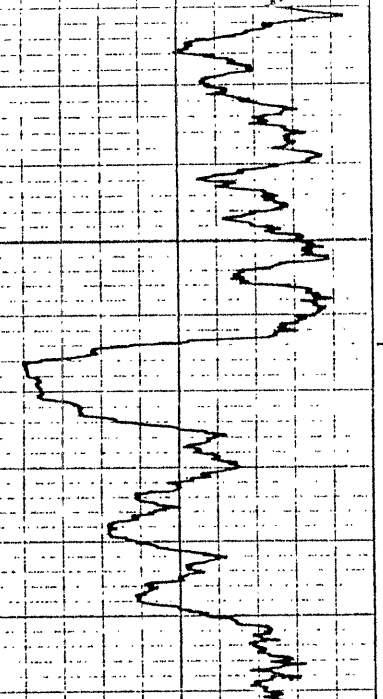
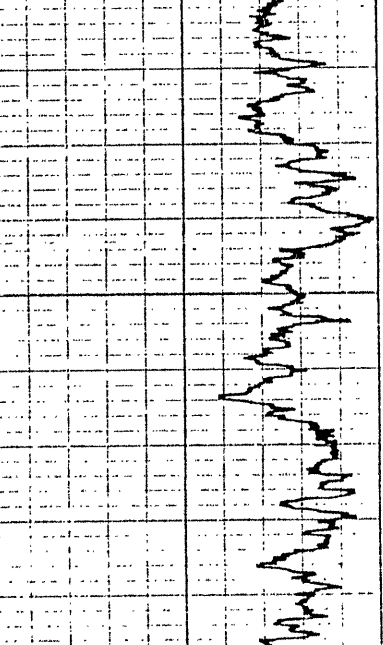
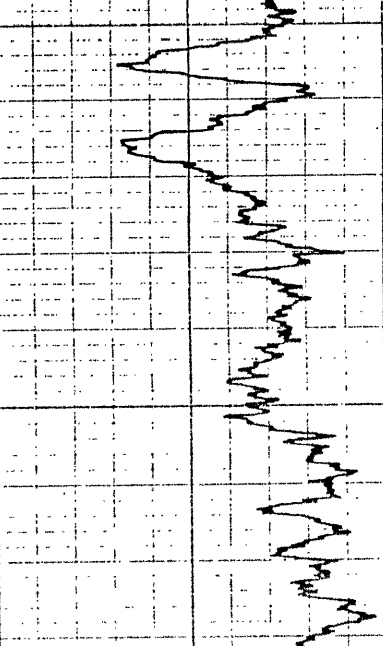
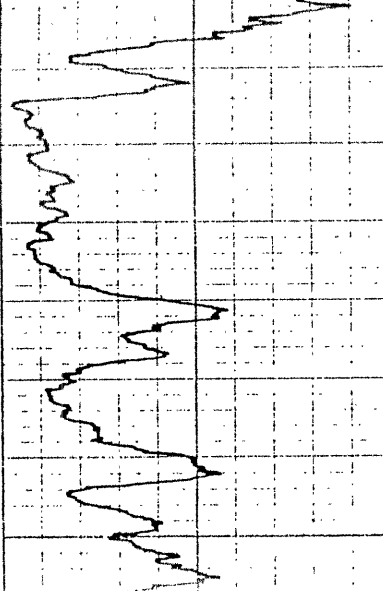
RECORDED

NO. TCI 2179

REMCO -SAPI

GRAPHIC CORP'S CORPORATION BUFFALO, N.Y.

RECORDED



RECORD NO.

PRINTED IN U.S.A.

NO. TCI 2179

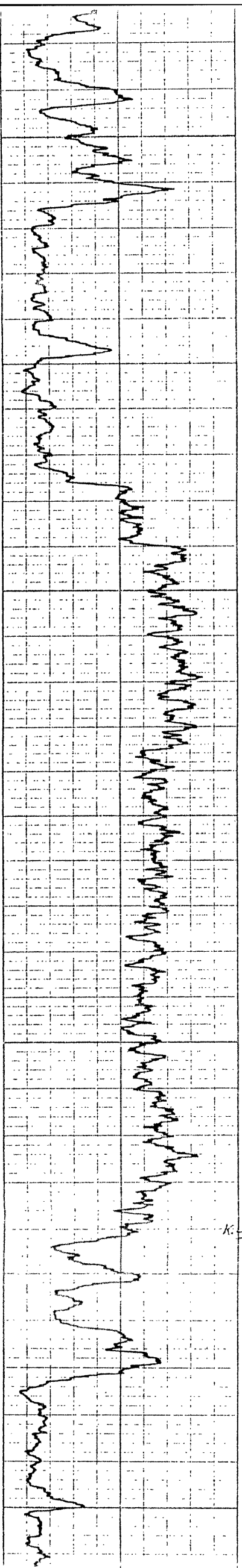
REMCO SAPI

GRAPHIC RECORDS CORPORATION, BUFFALO, N.Y.

PRINTED IN U.S.A.

NO. TCI 2179

REMCO

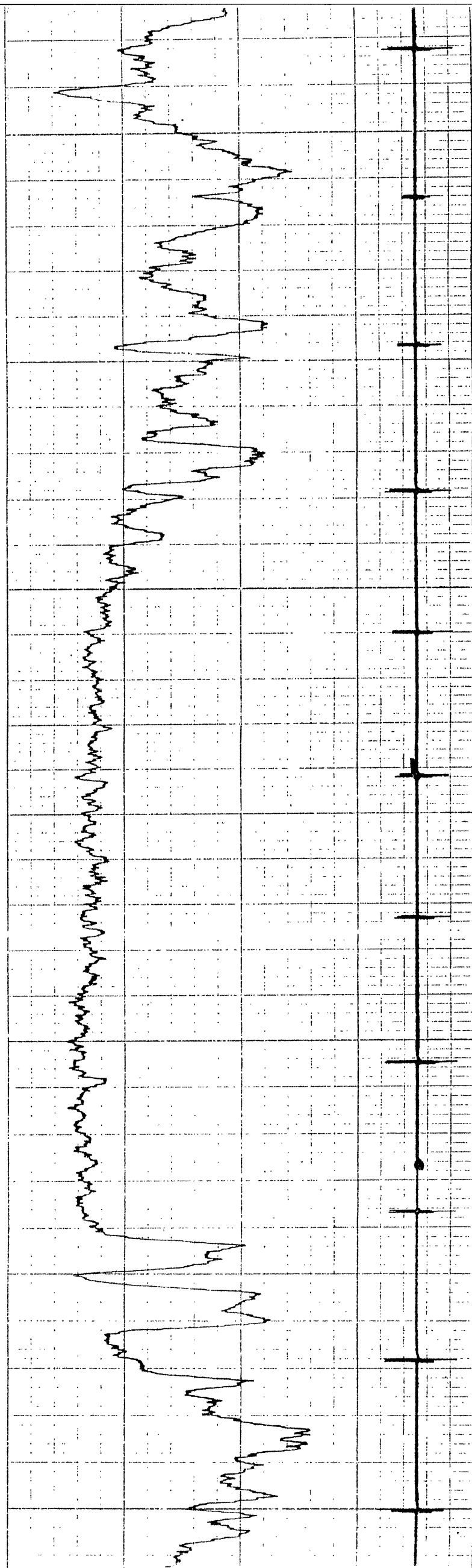


1900

1900

1700

1600



3

REMCO -5API

REMCO -5API

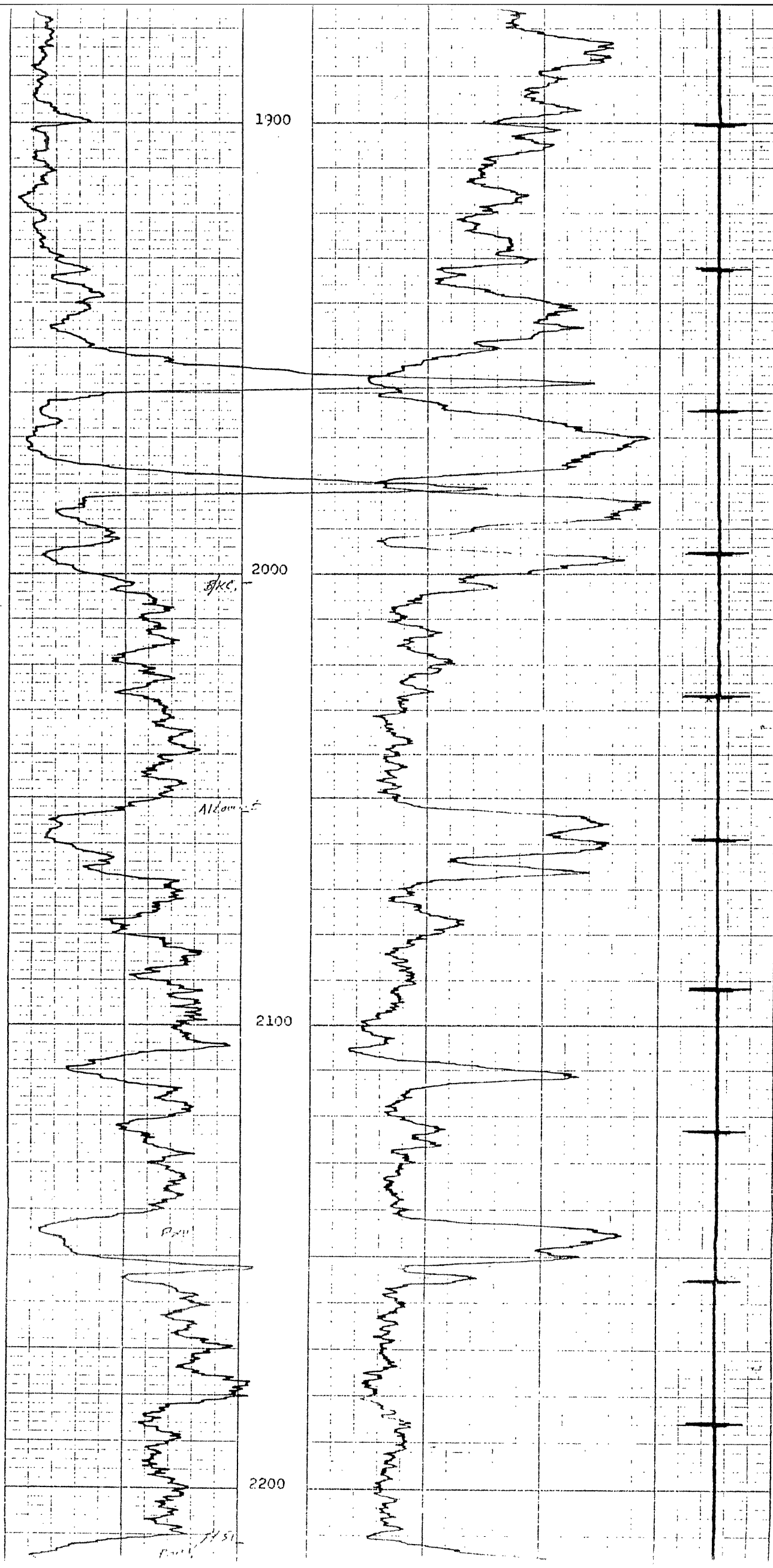
PRINTED IN U.S.A.

NO. TC1 2179

REMCO -5API

REMCO -5API

3



No. TCI 2179

GRAND CENTRAL CORPORATION BUFFALO, N.Y.

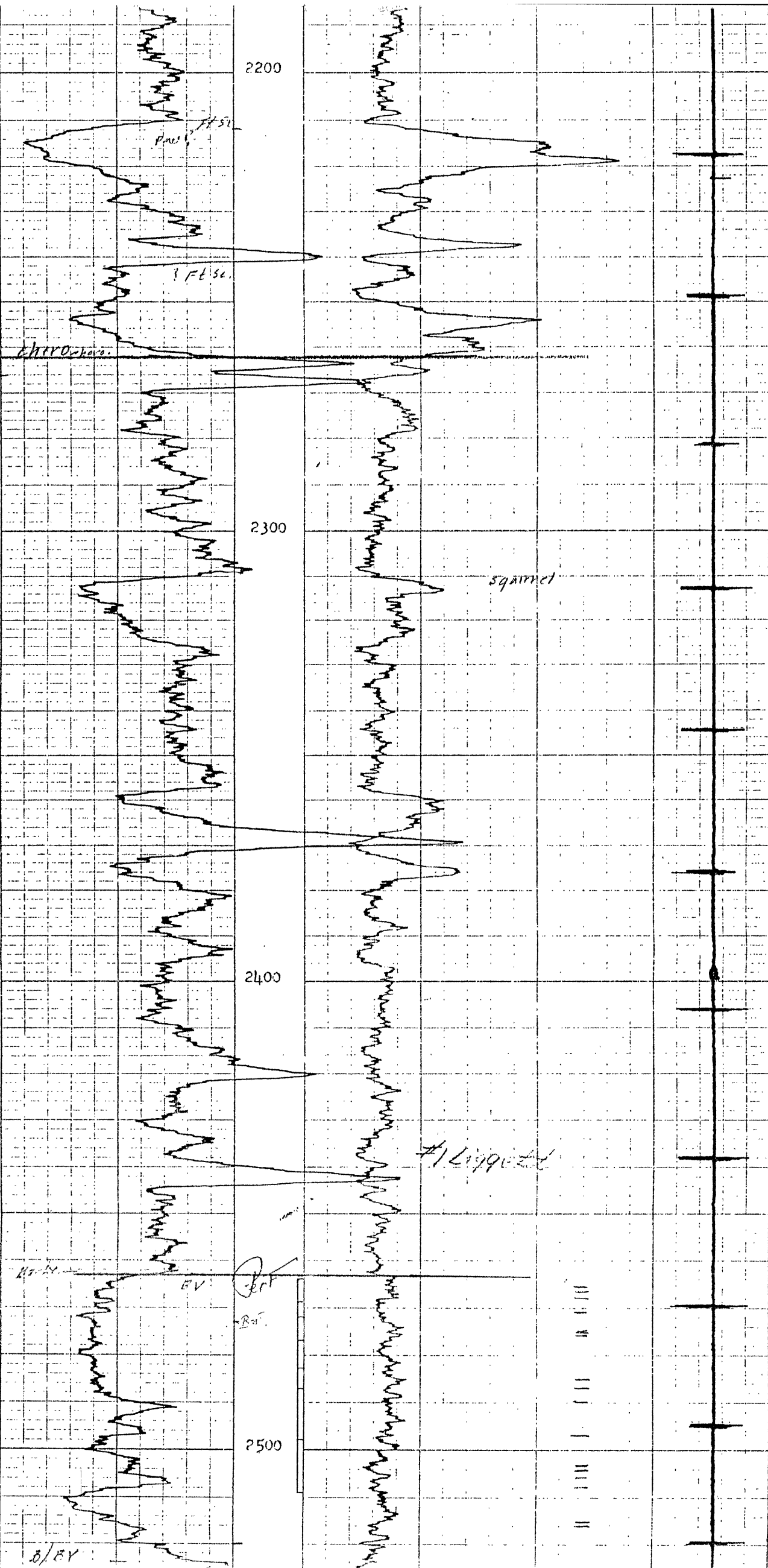
REMCO - S.A.P.I

No. TCI 2179

OPERATION BUFFALO, N.Y.

2262
11423
-837

2463
1423
1038



HERO-bevo.

1 FT 50

1 FT 50

squamet

#1 Liggett

B/8V

Ref.

2463
1423
103B

MADE IN U.S.A.
GRAPHIC CONTROLS CORPORATION BUFFALO, N.Y.
REMCO - SAPI
No. TCI 2179

Rocky

BV

Perf

Bot

2500

0/BV

M

Mississippi

2566
1423
11A

T.S. 2596
O.S. A. i. .
1423 x 9 1/2 # 103B
E.S. Britsch
Liggett #1

2363
1413
103B

2446
1413
1033

2512
1413
1099

