

This form shall be filed in duplicate with the Kansas Corporation Commission, 200 Colorado Derby Building, Wichita, Kansas 67202, within ten days after the completion of the well, regardless of how the well was completed.

Attach separate letter of request if the information is to be held confidential. If confidential, only file one copy. Information on side one will be of public record and side two will then be held confidential.

Circle one: (Oil) Gas, Dry, SWD, OWWO, Injection. Type and complete ALL sections. Applications must be filed for dual completion, commingling, SWD and injection.

Attach wireline logs (i.e. electrical log, sonic log, gamma ray neutron log, etc.). KCC # (316) 263-3238. (Rules 82-2-105 & 82-2-125)

OPERATOR Thornton E. Anderson

API NO. 15-147-20363 -00-00

ADDRESS 840 First National Bank Bldg.

COUNTY Phillips

Wichita, Kansas 67202

FIELD Slinker

**CONTACT PERSON Frank S. Mize

PROD. FORMATION

PHONE 265-7929

LEASE Adee

PURCHASER CRA

WELL NO. 1

ADDRESS P. O. Box 7305

WELL LOCATION C SW NW NW

Kansas City, Missouri 64116

990 Ft. from North Line and

DRILLING Abercrombie Drilling, Inc.

330 Ft. from West Line of

CONTRACTOR

ADDRESS 801 Union Center Building

the NW/4 SEC. 30 TWP. 4 RGE. 19W

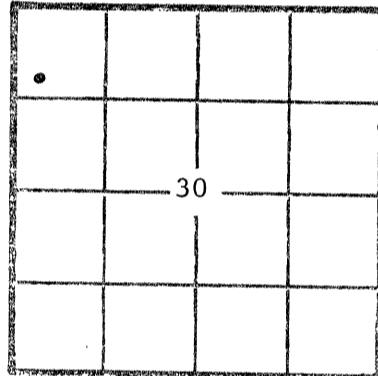
Wichita, Kansas 67202

WELL PLAT

PLUGGING None

CONTRACTOR

ADDRESS



KCC ✓
KGS ✓
(Office Use)

TOTAL DEPTH 3,500 PBTD

SPUD DATE 10-13-81 DATE COMPLETED 2-26-82

ELEV: GR 1,988 DF KB 1,993 KB

DRILLED WITH (CABLE) (ROTARY) (AIR) TOOLS

Amount of surface pipe set and cemented 203.81 KB DV Tool Used? No

AFFIDAVIT

STATE OF Kansas, COUNTY OF Sedgwick SS, I,

Frank S. Mize OF LAWFUL AGE, BEING FIRST DULY SWORN UPON HIS OATH,

DEPOSES THAT HE IS An Employee (X) (OF) Thornton E. Anderson

OPERATOR OF THE Adee LEASE, AND IS DULY AUTHORIZED TO MAKE

THIS AFFIDAVIT FOR AND ON THE BEHALF OF SAID OPERATOR, THAT WELL NO. 1 ON

SAID LEASE HAS BEEN COMPLETED AS OF FEBRUARY 26 DAY OF February, 1982, AND THAT

ALL INFORMATION ENTERED HEREIN WITH RESPECT TO SAID WELL IS TRUE AND CORRECT.

FURTHER AFFIANT SAITH NOT. MAR 4 1982 3-4-82

CONSEVATION DIVISION Wichita, Kansas

SUBSCRIBED AND SWORN BEFORE ME THIS 2nd DAY OF March, 19 82

MARILYN A. SLAYMAKER NOTARY PUBLIC STATE OF KANSAS My Appt. Expires 4-20-85

(S) Frank S. Mize
Marilyn A. Slaymaker NOTARY PUBLIC

MY COMMISSION EXPIRES:

**The person who can be reached by phone regarding any questions concerning this information. Within 45 days of completion, a witnessed initial test by the Commission is required if the well produces more than 25 BOPD or is located in a Basic Order Pool.

SIDE TWO

WELL LOG

Show all important zones of porosity and contents thereof; cored intervals, and all drill-stem tests, including depth interval tested, cushion used, time tool open, flowing and shut-in pressures, and recoveries.

SHOW GEOLOGICAL MARKERS, LOGS RUN, OR OTHER DESCRIPTIVE INFORMATION.

FORMATION DESCRIPTION, CONTENTS, ETC.	TOP	BOTTOM	NAME	DEPTH
No Description			Log Tops	
			Anhydrite	1537+ 956
			Topeka	2928- 935
			Heebner	3120-1127
			Toronto	3149-1156
			Lansing	3166-1173
			BKC	3378-1385
			Marmaton	3416-1923
			Cong. Sand	3466-1473

Report of all strings set — surface, intermediate, production, etc. CASING RECORD (New) or (Used)

Purpose of string	Size hole drilled	Size casing set (in O.D.)	Weight lbs/ft.	Setting depth	Type cement	Sacks	Type and percent additives
Surface	12 1/4"	8 5/8"	20#	204 KB	Class A Common	150	2% gel 3% CaCl
Production	7 7/8"	4 1/2"	9 1/2#	3499 KB	60-40 poz	125	10% salt

LINER RECORD

PERFORATION RECORD

Top, ft.	Bottom, ft.	Sacks cement	Shots per ft.	Size & type	Depth interval
			4	3 1/8 DPCG	3149 1/2 - 3150 1/2
			4	3 1/8 DPCG	3166 1/2 - 3169 1/2

TUBING RECORD

Size	Setting depth	Packer set at

ACID, FRACTURE, SHOT, CEMENT SQUEEZE RECORD

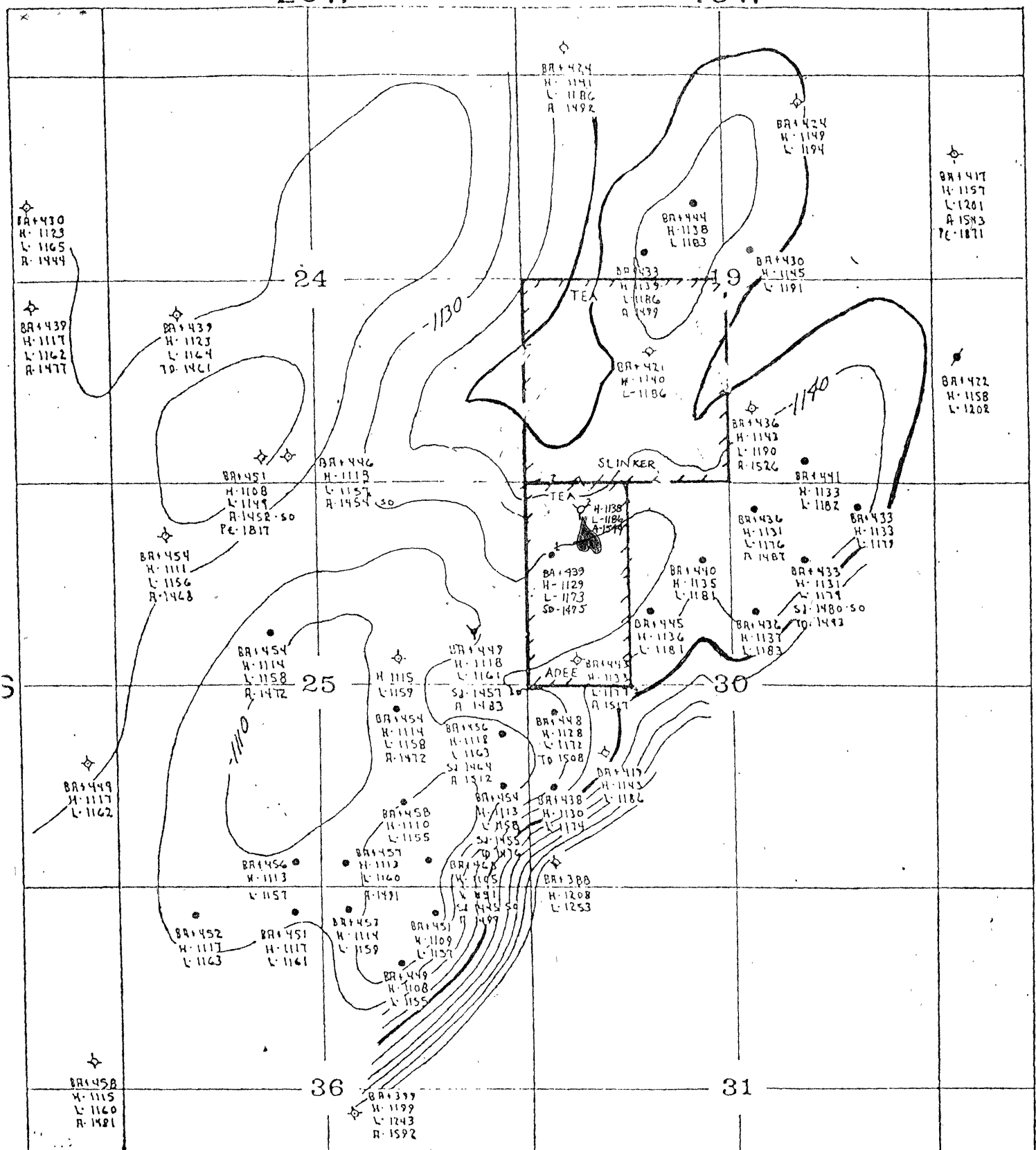
Amount and kind of material used	Depth interval treated
Dumped 110 G Reg 15% A W 22 BD & SWB back unspent acid;	3149 1/2 - 3150 1/2
Dumped 250 G fresh A & loaded hole with oil & pressured up to 1250#.	

Date of first production 2-26-82	Producing method (flowing, pumping, gas lift, etc.) pumping	Gravity
RATE OF PRODUCTION PER 24 HOURS	Oil 14 1/2 bbls.	Gas MCF
	Water 94 %	Gas-oil ratio 225 bbls. CFPB
Disposition of gas (vented, used on lease or sold)		Perforations 3149 1/2 - 3150 1/2 & 3166 1/2 - 3169 1/2

15-147-20363-00-00

20W

19W



Phillips County
Kansas

3" = 1 Mile

Datum HEEBNER SHALE

C.I. 10'