

15-47-00019-00-00
WELL PLUGGING RECORD

STATE OF KANSAS
STATE CORPORATION COMMISSION

Give All Information Completely
Make Required Affidavit
Mail or Deliver Report to:
Conservation Division
State Corporation Commission
800 Bitting Building
Wichita, Kansas

OR
FORMATION PLUGGING RECORD

Strike out upper line
when reporting plugging
of formations.

Phillips County. Sec. 3 Twp. 5-S Rge. 20 (M) W (W)
Location as "NE 1/4 NW 1/4 SW 1/4" or footage from lines. SE NW NE

Lease Owner. Stanolind Oil and Gas Company

Lease Name. B. W. Wilttrout "B" Well No. 1

Office Address. Box 591, Tulsa, Oklahoma

Character of Well (completed as Oil, Gas or Dry Hole) Dry Hole

Date well completed. February 25, 19 46

Application for plugging filed. February 26, 19 46

Application for plugging approved. February 27, 19 46

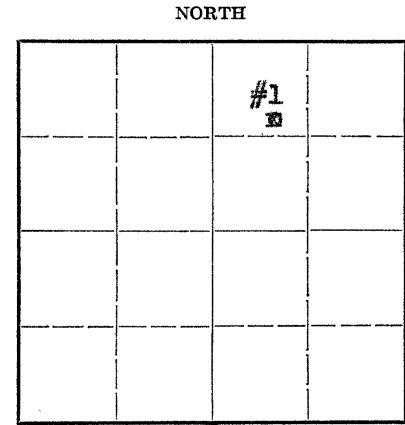
Plugging commenced. March 6, 19 46

Plugging completed. March 12, 19 46

Reason for abandonment of well or producing formation. Well Completed as a Dry hole,
Lansing and Arbuckle formations being non-commercial

If a producing well is abandoned, date of last production. 19

Was permission obtained from the Conservation Division or its agents before plugging was commenced? Yes



Locate well correctly on above
Section Plat

Name of Conservation Agent who supervised plugging of this well. H. W. Kerr, Great Bend Kansas

Producing formation. Lansing Depth to top. 3081 Bottom. 3280 Total Depth of Well. 3437 Feet

Show depth and thickness of all water, oil and gas formations.

OIL, GAS OR WATER RECORDS

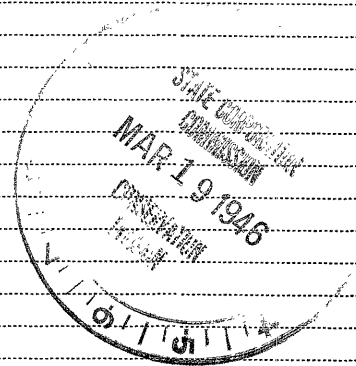
CASING RECORD

| Formation | Content | From | To | Size | Put In | Pulled Out |
|-------------------|------------------------------------|------|------|--------|--------|------------|
| Lansing | 8 Hr. swab test 4 oil 110 water | 3081 | 3298 | 13-3/8 | 160' | None |
| Reworked Arbuckle | Lime, No Show | 3280 | 3403 | 5-1/2 | 3340' | 2586' |
| Arbuckle | Trace black oil w/ Saltwater | 3403 | 3437 | | | |

Describe in detail the manner in which the well was plugged, indicating where the mud fluid was placed and the method or methods used in introducing it into the hole. If cement or other plugs were used, state the character of same and depth placed, from... feet to... feet for each plug set.

Well drilled to TD 3437, cement used when 5-1/2" oil string was set was drilled to PFD 3135. Attempts to complete as Lansing producer by gun perforating being unsuccessful, three sacks cement was dumped on bottom, pulling machine was moved in, hole mudded to 2600', pipe ripped at 2600' and 2550' where it started, 2586' 5 1/2" casing being recovered. Hole was then mudded to 150 feet, fifteen sacks cement dumped, and hole mudded to 15 feet from bottom of cellar, then being capped to surface with 10 sacks cement.

Handwritten notes: 3 5 20W, 45 5



3-19-46

(If additional description is necessary, use BACK of this sheet)

Correspondence regarding this well should be addressed to W. M. Warren
Address. Box 35, Gorham Kansas

STATE OF Kansas, COUNTY OF Russell, ss.

I, W. M. Warren (employee of owner) or (owner or operator) of the above-described well, being first duly sworn on oath, says: That I have knowledge of the facts, statements, and matters herein contained and the log of the above-described well as filed and that the same are true and correct. So help me God.

(Signature) W. M. Warren Field Sup't.
Box 35, Gorham, Kansas (Address)

SUBSCRIBED AND SWORN TO before me this 18th day of March, 19 46.

My commission expires December 31, 1948 Notary Public.

640 Acres
N

STANOLIND OIL AND GAS COMPANY

WELL RECORD

| | | | | | |
|-----|--|--|--|---|-----|
| 160 | | | | X | 160 |
| | | | | | |
| | | | | | |
| 160 | | | | | 160 |

Locate Well Correctly

COUNTY Phillips, SEC. 3, TWP. 5S., RGE. 20W
 COMPANY OPERATING Stanolind Oil and Gas Co.
 OFFICE ADDRESS P.O. Box 591, Tulsa, Oklahoma
 FARM NAME B. W. Wiltrout "B" WELL NO. 1
 DRILLING STARTED 1-18- 19 46, DRILLING FINISHED 2-10- 19 46,
 WELL LOCATED SE 1/4 NW 1/4 NE 1/4 4290 ft. North of South
 Line and 3630 ft. East of West Line of Quarter Section.
 ELEVATION (Relative to sea level) DERRICK FLR. 1961 GROUND 1951
 CHARACTER OF WELL (Oil, gas or dry hole) Dry Hole.

OIL OR GAS SANDS OR ZONES

| Name | From | To | Name | From | To |
|----------------------------|-------------|-------------|------|------|----|
| 1 <u>Lansing</u> | <u>3081</u> | <u>3298</u> | | | |
| 2 <u>Reworked Arbuckle</u> | <u>3380</u> | <u>3403</u> | | | |
| 3 <u>Arbuckle</u> | <u>3403</u> | <u>3437</u> | | | |

WATER SANDS

| Name | From | To | Water Level | Name | From | To | Water Level |
|------|------|----|-------------|------|------|----|-------------|
| 1 | | | | | | | |
| 2 | | | | | | | |
| 3 | | | | | | | |

CASING RECORD Over all measurements

| Size | Wt. | Thds. | Make | Amount Set | | Amount Pulled | | Packer Record | | | |
|---------------|------------|-------------|-----------|-------------|----------|---------------|-----|---------------|--------|-----------|------|
| | | | | Ft. | In. | Ft. | In. | Size | Length | Depth Set | Make |
| <u>13-3/8</u> | <u>36#</u> | <u>Slip</u> | <u>SW</u> | <u>160</u> | <u>0</u> | | | | | | |
| <u>5-1/2</u> | <u>14#</u> | <u>8 RT</u> | <u>SS</u> | <u>3340</u> | <u>6</u> | | | | | | |

Liner Record: Amount _____ Kind _____ Top _____ Bottom _____

CEMENTING AND MUDDING RECORD

| Size | where KIDON Set Feet | In. | Sacks Cement | Cement | | Method Cementing | Amount | Mudding Method | Results (See Note) |
|---------------|----------------------------|----------|-----------------|-----------------|-----------------|---------------------|--------|-------------------|-----------------------|
| | | | | Brand | Type | | | | |
| <u>13-3/8</u> | <u>159</u> | <u>-</u> | <u>200</u> | <u>AshGrove</u> | <u>Portland</u> | <u>HOWCO</u> | | | |
| <u>5-1/2</u> | <u>3322</u> | <u>-</u> | <u>150</u> | <u>"</u> | <u>"</u> | <u>HOWCO</u> | | | |

3 5 20W
45 5

NOTE: What method was used to protect sands when outer strings were pulled? None

NOTE Were bottom hole plugs used? _____ If so, state kind, depth set and results obtained _____

TOOLS USED

Rotary tools were used from 0 feet to 3437 feet, and from _____

Cable tools were used from _____ feet to _____ feet, and from _____

Type Rig Mechanical Power

PRODUCTION DATA

Production first 24 hours _____ bbls. Gravity _____, Emulsion _____ per cent., Water _____ per cent

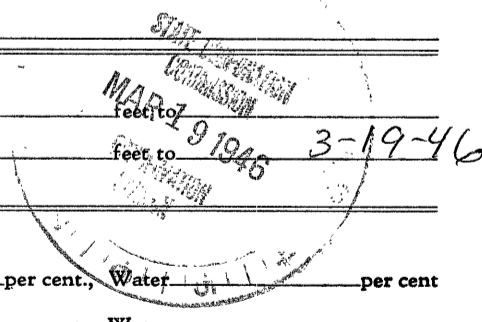
Production second 24 hours _____ bbls. Gravity _____, Emulsion _____ per cent., Water _____ per cent

If gas well, cubic feet per 24 hours _____ Rock Pressure, lbs. per square inch _____

I, the undersigned, being first duly sworn upon oath, state that this well record is true, correct and complete according to the records of this office and to the best of my knowledge and belief.

Subscribed and sworn to before me this the 9th day of March, 19 46

My commission expires 12-31-46 _____ Notary Public.



FORMATION RECORD

Give detailed description and thickness of all formations drilled through and contents of sand, whether dry, water, oil or gas.

| Formation | Top | Bottom | Formation | Top | Bottom |
|--|-------------|-------------|-----------|-----|--------|
| All Measurements from Rotary Bushing | | | | | |
| 2' 9" From HB to Derrick Floor | | | | | |
| 2' From Derrick Floor to Ground | | | | | |
| 5' 6" From Ground to Bottom of Cellar | | | | | |
| Cellar | 0 | 10 | | | |
| Surface Clay & Sand | 10 | 65 | | | |
| Shale & Shells | 65 | 161 | | | |
| Shale | 161 | 669 | | | |
| Shale & Shells | 669 | 1030 | | | |
| Sand | 1030 | 1220 | | | |
| Shale & Shells | 1220 | 1360 | | | |
| Sand & Shale | 1360 | 1480 | | | |
| Lime - Anhydrite | 1480 | 1520 | | | |
| Shale & Shells | 1520 | 1850 | | | |
| Shale | 1850 | 1930 | | | |
| Shale & Shells | 1930 | 2215 | | | |
| Shale & Sand | 2215 | 2336 | | | |
| Lime & Shale Streaks | 2336 | 2445 | | | |
| Lime & Shale | 2445 | 2750 | | | |
| Lime | 2750 | 2795 | | | |
| Lime & Shale | 2795 | 2910 | | | |
| Shale & Lime | 2910 | 3081 | | | |
| <u>Top Lansing 3081</u> | | | | | |
| Lime | 3081 | 3300 | | | |
| Sand | 3300 | 3321 | | | |
| Lime | 3321 | 3380 | | | |
| <u>Top Reworked Arbuckle 3380</u> | | | | | |
| Reworked Arbuckle | 3380 | 3403 | | | |
| <u>Top Arbuckle</u> | <u>3403</u> | | | | |
| Arbuckle | 3403 | 3437 | | | |
| <u>Total Depth</u> | | <u>3437</u> | | | |
| Schlumberger Elec. Log to | TD | | | | |
| <u>Total Depth</u> | | | | | |
| By Schlumberger | | 3435 | | | |
| By Rotary Drill Pipe | | 3437 | | | |
| 5 1/2" OD Casing set at | | 3322 | | | |
| with 150 sacks. | | | | | |
| Plugged Back Depth | | 3278 | | | |
| <u>Temperature Survey</u> | | | | | |
| Top of Cement Outside of Casing | | 2700 | | | |
| Perforated Casing: | | | | | |
| w/12 shots | 3170 | 3176 | | | |
| w/23 shots | 3147 | 3153 | | | |
| w/24 shots | 3131 | 3136 | | | |
| w/12 shots | 3130 | 3134 | | | |
| Acidized: | | | | | |
| Section 3130-3134 w/ 200 Gal. Dowell X acid. | | | | | |
| Swab Test: | | | | | |
| 11 BO & 333 BW in 24 hours | | | | | |
| Dumped 3 sacks cement as Temporary Plug. | | | | | |
| Completed as dry Hole 2-25-46 | | | | | |
| Plugged Back TD | | 3135 | | | |