

STATE CORPORATION COMMISSION OF KANSAS
OIL & GAS CONSERVATION DIVISION

WELL COMPLETION OR RECOMPLETION FORM
ACO-1 WELL HISTORY

DESCRIPTION OF WELL AND LEASE

Operator: License # 5669
Name Helberg Oil Company
Address Box 32
City/State/Zip Morland, Kansas 67650

Purchaser

Operator Contact Person Jerry M. Helberg
Phone 913-627-5665

Contractor: License # 5669
Name Helberg Oil Company

Wellsite Geologist Roger Welty
Phone 913-674-5563

Designate Type of Completion

New Well Re-Entry Workover

Oil SWD Temp Abd
 Gas Inj Delayed Comp.
 Dry Other (Core, Water Supply etc.)

If OWWO: old well info as follows:

Operator Empire Drilling
Well Name Griffin #1
Comp. Date 2-7-52 Old Total Depth 190

WELL HISTORY

Drilling Method:

Mud Rotary Air Rotary Cable

7-28-1987 8-5-1987 8-5-1987
Spud Date Date Reached TD Completion Date

3790' PBTB
Total Depth

Amount of Surface Pipe Set and Cemented at 187 feet
Multiple Stage Cementing Collar Used? Yes No
If yes, show depth set.....feet
If alternate 2 completion, cement circulated from.....feet depth to.....w/.....SX cmt

INSTRUCTIONS: This form shall be completed in duplicate and filed with the Kansas Corporation Commission, 200 Colorado Derby Building, Wichita, Kansas 67202, within 90 days after completion or recompletion of any well. Rule 82-3-130 and 82-3-107 apply. Information on side two of this form will be held confidential for a period of 12 months if requested in writing and submitted with the form. See rule 82-3-107 for confidentiality in excess of 12 months. One copy of all wireline logs and drillers time log shall be attached with this form. Submit CP-4 form with all plugged wells. Submit CP-111 form with all temporarily abandoned wells.

All requirements of the statutes, rules and regulations promulgated to regulate the oil and gas industry have been fully complied with and the statements herein are complete and correct to the best of my knowledge.

Signature Jerry M. Helberg
Title OWNER Date 8-11-87

Subscribed and sworn to before me this 11th day of August 1987.

Notary Public. Coleen Shields

Date Commission Expires March 11, 1990
COLEEN SHIELDS
NOTARY PUBLIC
STATE OF KANSAS
My Appt. Exp. 3-11-90

API NO. 15-137-01,000-00-01
County Norton
SW SW NE Sec 31 Twp 5S Rge 22 East West

2970 Ft North from Southeast Corner of Section
2310 Ft West from Southeast Corner of Section
(Note: Locate well in section plat below)

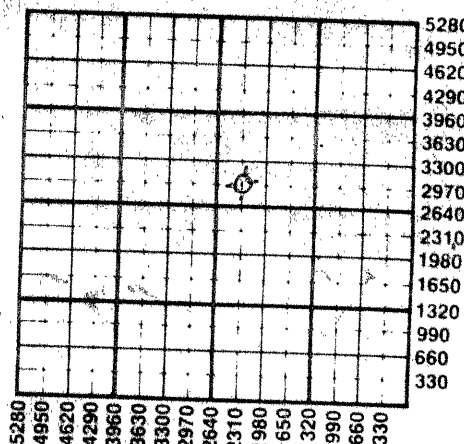
Lease Name Brooks Well # 1

Field Name

Producing Formation

Elevation: Ground 2387 KB 2392

Section Plat



WATER SUPPLY INFORMATION

Disposition of Produced Water: Disposal Repressuring
Docket #

Questions on this portion of the ACO-1 call:
Water Resources Board (913) 296-3717

Source of Water:
Division of Water Resources Permit #

Groundwater.....Ft North from Southeast Corner (Well)Ft West from Southeast Corner of Sec Twp Rge East West

Surface Water.....Ft North from Southeast Corner (Stream, pond etc).....Ft West from Southeast Corner Sec Twp Rge East West

Other (explain) Farm Pond less than 15' acre (purchased from city, R.W.D. #)

K.C.C. OFFICE USE ONLY

F Letter of Confidentiality Attached
C Wireline Log Received
C Drillers Timelog Received

Distribution

KCC SWD/Rep NGPA
 KGS Plug Other (Specify)

SIDE TWO

Operator Name Helberg Oil Company Lease Name Brooks Well # 1

Sec. 31 Twp. 5 Rge. 22 East West County Norton

WELL LOG

INSTRUCTIONS: Show important tops and base of formations penetrated. Detail all cores. Report all drill stem tests giving interval tested, time tool open and closed, flowing and shut-in pressures, whether shut-in pressure reached static level, hydrostatic pressures, bottom hole temperature, fluid recovery, and flow rates if gas to surface during test. Attach extra sheet if more space is needed. Attach copy of log.

Drill Stem Tests Taken Yes No
 Samples Sent to Geological Survey Yes No
 Cores Taken Yes No

Formation Description
 Log Sample

30-30-30-45

IFP 59
 FFP 77
 ISP 1087
 FSP 1089

Name	Top	Bottom
Anhydrite	2005	+387
Heebner	3556	-1164
Toronto	3585	-1193
Lansing	3600	-1208
B.K.C.	3785	-1393
Total Depth	3790	-1398

120 feet of Drilling Mud with a few oil specks.

(copy of drill stem test attached)

CASING RECORD <input type="checkbox"/> New <input type="checkbox"/> Used							
Report all strings set-conductor, surface, intermediate, production, etc.							
Purpose of String	Size Hole Drilled	Size Casing Set (in O.D.)	Weight Lbs/Ft.	Setting Depth	Type of Cement	#Sacks Used	Type and Percent Additives
Surface	12 1/2"	8 5/8"		187	Common	125	

PERFORATION RECORD		Acid, Fracture, Shot, Cement Squeeze Record	
Shots Per Foot	Specify Footage of Each Interval Perforated	(Amount and Kind of Material Used)	Depth

TUBING RECORD	Size	Set At	Packer at	Liner Run	<input type="checkbox"/> Yes <input type="checkbox"/> No

Date of First Production	Producing Method				
	<input type="checkbox"/> Flowing <input type="checkbox"/> Pumping <input type="checkbox"/> Gas Lift <input type="checkbox"/> Other (explain).....				
Estimated Production Per 24 Hours	Oil	Gas	Water	Gas-Oil Ratio	Gravity
	Bbls	MCF	Bbls	CFPB	

METHOD OF COMPLETION

Production Interval

Disposition of gas: Vented Open Hole Perforation
 Sold Other (Specify)
 Used on Lease Dually Completed
 Commingled

PAGE 2 (Side One)

OPERATOR Helberg Oil Co. LEASE NAME Brooks

SEC 31 TWP 5 RGE 22

XXX
 (W)

WELL NO. 1

FILL IN WELL INFORMATION AS REQUIRED:

Show all important zones of porosity and contents thereof; cored intervals, and all drill-stem tests, including depth interval tested, cushion used, time tool open, flowing & Shut-in pressures, and recoveries.

Show Geological markers, logs run, or Other Descriptive information.

FORMATION DESCRIPTION, CONTENTS, ETC.	TOP	BOTTOM	NAME	DEPTH
Sand and Shale	70	196		
Sand and Shale	196	545		
Sand & Shale	545	1165		
Sand & Shale	1165	1770		
Sand & Shale	1770	2000		
Anhydrite	2000	2034		
Shale	2034	2140		
Shale	2140	2400		
Shale	2400	2460		
Shale & Lime	2460	2660		
Shale & Lime	2660	2835		
Shale & Lime	2835	2990		
Shale & Lime	2990	3090		
Shale & Lime	3090	3185		
Shale & Lime	3185	3280		
Lime & Shale	3280	3350		
Lime & Shale	3350	3430		
Lime & Shale	3430	3525		
Lime & Shale	3525	3600		
Lime & Shale	3600	3620		
Lime & Shale	3620	3650		
Lime & Shale	3650	3700		
Lime & Shale	3700	3755		
Lime & Shale	3755	3790		
T.D.	3790			
D&A				

RECEIVED
 STATE OIL AND GAS COMMISSION

AUG 13 1987

CHENEY TESTING COMPANY, INC.

P. O. Box 367

HILL CITY, KANSAS 67642

DRILL-STEM TEST DATA

Company <u>Helburg Oil Co.</u>	Test No. <u>1</u>
Well Name & Number <u>Brooks #1</u>	Zone Tested <u>Hb-Tor.-Lansing "A"</u>
Company Address <u>P.O.Box 32, Morland, Ks. 67650</u>	Date <u>8-3-87</u>
Company Rep. <u>Roger Welty</u>	Tester <u>Gary Pevoteaux</u>
Contractor <u>Co.Tools</u>	Elevation <u>2392 K.B.</u>
Location: Sec. <u>31</u> Twp. <u>5S</u> Rge. <u>22W</u> Co. <u>Norton</u> State <u>Ks.</u>	Est. Feet of Pay _____

Recorder No. 13638 Type AK-1 Range 4675 PSI
 Recorder Depth 3617 Clock # 22922
 (A) Initial Hydrostatic Mud 1894 PSI
 (B) First Initial Flow Pressure 59 PSI
 (C) First Final Flow Pressure 77 PSI
 (D) Initial Shut-in Pressure 1087 PSI
 (E) Second Initial Flow Pressure 91 PSI
 (F) Second Final Flow Pressure 100 PSI
 (G) Final Shut-in Pressure 1089 PSI
 (H) Final Hydrostatic Mud 1884 PSI
 Temperature 107°
 Mud Weight 10.0 Viscosity 36
 Fluid Loss 11.2 cc
 Interval Tested 3552-3620
 Anchor Length 68
 Top Packer Depth 3547
 Bottom Packer Depth 3552
 Total Depth 3620
 Drill Pipe Size 4½" X.H.
 COLLARS
 Wt. Pipe I. D. 2.25 Ft. Run. 30
 Recovery-Total Feet 120

Recorder No. 13639 Type AK-1 Range 4675 PSI
 Recorder Depth 3612 Clock # 19127
 Tool Open Before I.S.I. 30 Mins.
 Initial Shut-in 30 Mins.
 Flow Period 30 Mins.
 Final Shut-in 45 Mins.
 Top Choke Size 1" Hole Size 7 7/8"
 Bottom Choke Size 3/4" Rubber Size 6 3/4"

Tool Open @ 7:48 A.M.
 Blow Remarks 1st Open: Weak Blow.
(2" after 30 min.) 2nd Open: Weak Blow. (½-½")
2nd Open: Weak Blow. (½"-½")

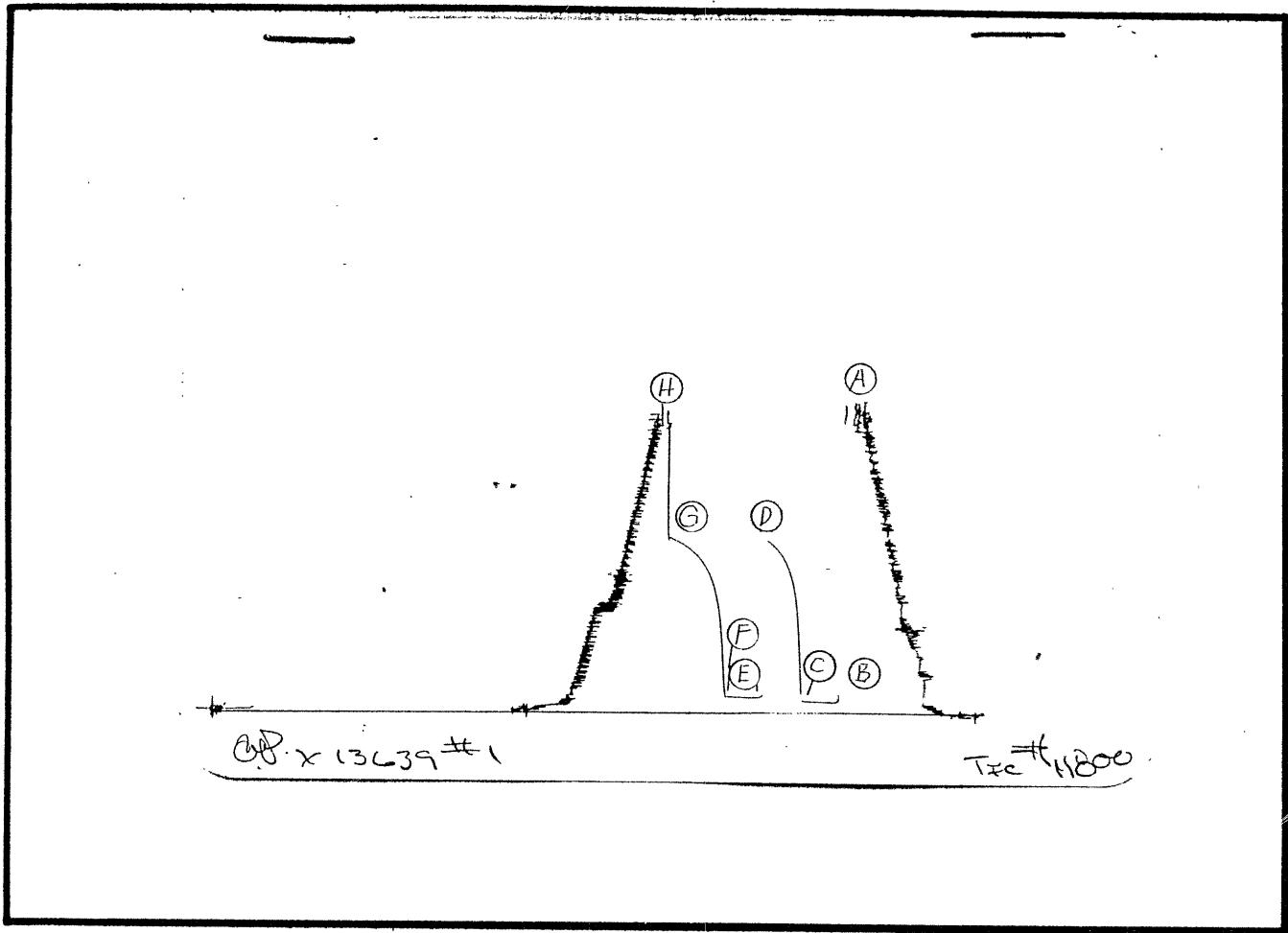
Well Chl.: 1,500 P.P.M.
 Rec.: 1,500 P.P.M.

Recovered 120 Feet Of Drilling Mud with a few oil specks.
 Recovered _____ Feet Of _____
 Recovered _____ Feet Of _____
 Recovered _____ Feet Of _____
 Recovered _____ Feet Of _____
 Recovered _____ Feet Of _____

Extra Equipment _____ Price of Job \$350.00

STATE CORPORATION COMMISSION, KANSAS

AUG 13 1987



This is an actual photograph of recorder chart.

POINT	PRESSURE		
	Field Reading	Office Reading	
(A) Initial Hydrostatic Mud	1894		PSI
(B) First Initial Flow Pressure	59		PSI
(C) First Final Flow Pressure	77		PSI
(D) Initial Closed-in Pressure	1087		PSI
(E) Second Initial Flow Pressure	91		PSI
(F) Second Final Flow Pressure	100		PSI
(G) Final Closed-in Pressure	1089		PSI
(H) Final Hydrostatic Mud	1884		PSI

RECEIVED
 STATE OREGON COMMISSION

AUG 13 1987

CONSERVATION DIVISION
 Wichita, Kansas