

WELL PLUGGING RECORD

Give All Information Completely
Make Required Affidavit
Mail or Deliver Report to:
Conservation Division
State Corporation Commission
211 No. Broadway
Wichita, Kansas

Rooks County, Sec. 9 Twp. 6S Rge. 20W (E) (W)

Location as "NE/CNW/SW" or footage from lines 50' E. of Cen. SW/4 NW/4

Lease Owner Moble C. Hoover

Lease Name Steele Est. Well No. 1

Office Address 403 Lion Bldg., El Dorado, Arkansas

Character of Well (completed as Oil, Gas or Dry Hole) Dry Hole

Date well completed August 14, 1962 19

Application for plugging filed August 14, 1962 19

Application for plugging approved August 14, 1962 19

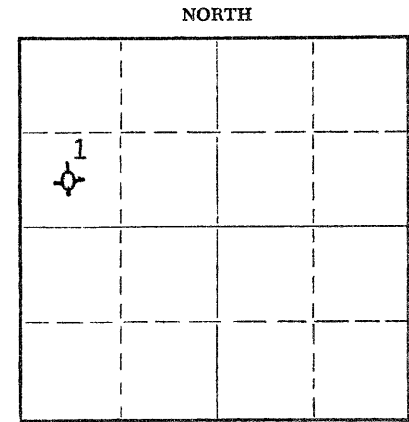
Plugging commenced August 14, 1962 19

Plugging completed August 14, 1962 19

Reason for abandonment of well or producing formation Dry Hole

If a producing well is abandoned, date of last production _____ 19

Was permission obtained from the Conservation Division or its agents before plugging was commenced? Yes



Locate well correctly on above Section Plat

Name of Conservation Agent who supervised plugging of this well Eldon Petty

Producing formation _____ Depth to top _____ Bottom _____ Total Depth of Well 3630 Feet

Show depth and thickness of all water, oil and gas formations.

OIL, GAS OR WATER RECORDS

CASING RECORD

FORMATION	CONTENT	FROM	TO	SIZE	PUT IN	PULLED OUT
				8-5/8	205	None

Describe in detail the manner in which the well was plugged, indicating where the mud fluid was placed and the method or methods used in introducing it into the hole. If cement or other plugs were used, state the character of same and depth placed, from _____ feet to _____ feet for each plug set.

- 15 sack plug placed at 550 feet in a 6-7/8" hole
- 20 sack plug placed at 180 feet
- 10 sack plug placed at 35 feet

RECEIVED
STATE CORPORATION COMMISSION
SEP 17 1962
9-17-62
CONSERVATION DIVISION
Wichita, Kansas

(If additional description is necessary, use BACK of this sheet)

Name of Plugging Contractor Chemical & Technical Services, Inc.

Address Hill City, Kansas

STATE OF Arkansas, COUNTY OF Union, ss.
Moble C. Hoover

(employee of owner) or (owner or operator) of the above-described well, being first duly sworn on oath, says: That I have knowledge of the facts, statements, and matters herein contained and the log of the above-described well as filed and that the same are true and correct. So help me God.

(Signature) Moble C. Hoover
El Dorado, Arkansas
(Address)

SUBSCRIBED AND SWORN TO before me this 13th day of September, 1962.

My commission expires September 21, 1963

Joseph A. Preece
Notary Public.

