

15-153-20370-0000

STATE OF KANSAS
STATE CORPORATION COMMISSION

WELL PLUGGING RECORD

Give All Information Completely
Make Required Affidavit
Mail or Deliver Report to
Conservation Division
State Corporation Comm.
245 North Water
Wichita, KS 67202

Rawlins County. Sec. 13 Twp. 5 Rge. 31 #/W
Location as "NE/CNW $\frac{1}{4}$ SW $\frac{1}{4}$ " or footage from lines

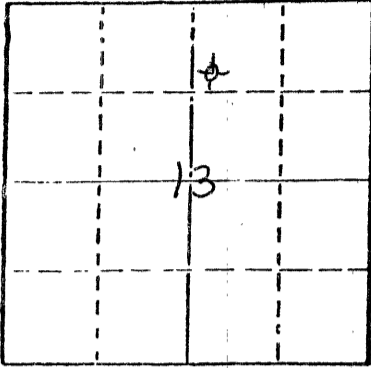
SW NW NE
Lease Owner West Kansas Oil Corp
Lease Name Bryan Well No. 2
Office Address Rt. 1 Selden, Ks.
Character of Well (Completed as Oil, Gas or Dry Hole)

Dry Hole
Date Well completed May 14 1980
Application for plugging filed 6-13-80 1980
Application for plugging approved 1980
Plugging commenced 5-14-80 1980
Plugging completed 5-14-80 1980
Reason for abandonment of well or producing formation

Dry hole
If a producing well is abandoned, date of last production None 1980

Was permission obtained from the Conservation Division or its agents before plugging was commenced? Yes

Name of Conservation Agent who supervised plugging of this well Gil Baltzhazor
Producing formation None Depth to top Bottom Total Depth of Well 4200
Show depth and thickness of all water, oil and gas formations.



Locate well correctly on above Section Plot

OIL, GAS OR WATER RECORDS

CASING RECORD

FORMATION	CONTENT	FROM	TO	SIZE	PUT IN	PULLED OUT
Surface water to 180'	fresh water	40	175'	8 5/8"	251	None

Describe in detail the manner in which the well was plugged, indicating where the mud fluid was placed and the method or methods used in introducing it into the hold. If cement or other plugs were used, state the character of same and depth placed, from feet to feet for each plug set.

70 sx at 1600'
20 sx at 240'
10 sx from 0-40'
5 sx in rat hole completed 300pm 5-14-80

(If additional description is necessary, use BACK of this sheet)

Name of Plugging Contractor Sun Cementing

STATE OF KANSAS COUNTY OF THOMAS, ss.
* CHARLES YOUNG (employee of owner) or (owner or operator)
of the above-described well, being first duly sworn on oath, says: That I have knowledge of the facts, statements, and matters herein contained and the log of the above-described well as filed and that the same are true and correct. So help me God.

(Signature) * Charles Young
Selden Kansas
(Address)

SUBSCRIBED AND SWORN TO before me this 27th day of June, 1980



My commission expires 21 March 1982

[Signature]
Notary Public.

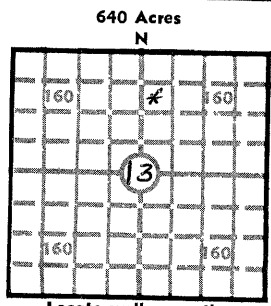
JUN 30 1980
6-30-80

KANSAS DRILLERS LOG

API No. 15 — 153 — 20370 -00-00
 County Number

S. 13 T. 5S R. 31 ^W
 Loc. SW NW NE
 County Rawlins

Operator West Kansas Oil Corp.
 Address Rt 1 Selden, Ks 67757
 Well No. 2 Lease Name Bryan
 Footage Location 990 feet from (N) line 330 feet from (W) line of NE/4
 Principal Contractor J+L Drilling Co. Geologist James L. Reeves
 Spud Date 5-5-80 Total Depth 4200 P.B.T.D. —
 Date Completed 5-14-80 Oil Purchaser —



Elev.: Gr. 2926
 DF — KB 2930

CASING RECORD

Report of all strings set — surface, intermediate, production, etc.

Purpose of string	Size hole drilled	Size casing set (in O.D.)	Weight lbs/ft.	Setting depth	Type cement	Sacks	Type and percent additives
Surface	12 1/4	8 5/8	28	251	50/50 port	250	2% gel 3% C.C.

LINER RECORD

PERFORATION RECORD

Top, ft.	Bottom, ft.	Sacks cement	Shots per ft.	Size & type	Depth interval

TUBING RECORD

Size	Setting depth	Packer set at

ACID, FRACTURE, SHOT, CEMENT SQUEEZE RECORD

Amount and kind of material used	Depth interval treated

INITIAL PRODUCTION

Date of first production 6-30-80 Producing method (flowing, pumping, gas lift, etc.)
 RATE OF PRODUCTION PER 24 HOURS
 Oil Gas Water Gas:oil ratio
 Disposition of gas (vented, used on lease or sold) Producing interval (s)

INSTRUCTIONS: As provided in KCC Rule 82-2-125, within 90 days after completion of a well, one completed copy of this Drillers Log shall be transmitted to the State Geological Survey of Kansas, 4150 Monroe Street, Wichita, Kansas 67209. Copies of this form are available from the Conservation Division, State Corporation Commission, 3830 So. Meridian (P.O. Box 17027), Wichita, Kansas 66217. Phone AC 316-522-2206. If confidential custody is desired, please note Rule 82-2-125. Drillers Logs will be on open file in the Oil and Gas Division, State Geological Survey of Kansas, Lawrence, Kansas 66044.

New Address
 245 North Water
 Wichita, Kansas 67202

Operator **West Kansas Oil Corp**

DESIGNATE TYPE OF COMP.: OIL, GAS, DRY HOLE, SWDW, ETC.:

Dry Hole

Well No.

2

Lease Name

Bryan

S.13 T.5S R.31 E. W

WELL LOG

Show all important zones of porosity and contents thereof; cored intervals, and all drill-stem tests, including depth interval tested, cushion used, time tool open, flowing and shut-in pressures, and recoveries.

SHOW GEOLOGICAL MARKERS, LOGS RUN, OR OTHER DESCRIPTIVE INFORMATION.

FORMATION DESCRIPTION, CONTENTS, ETC.	TOP	BOTTOM	NAME	DEPTH
Soil Soil	0	8		
sand + shale	8	160	RA Guard	log ran
blue shale	160	500		from 4200 to 3200'
sh + chalk	500	1120		
lime	1120	1175	Anhydrite	2643
shale + lime	1175	1555	Topeka	3797
sand + shale	1555	2425	Heebner	3918
shale	2425	2642	Toronto	3950
Anhydrite	2642	2678	Lansing	3965
sand + dolomite + shale	2678	3280	Base K.C	4190
lime + shale	3280	3798		
lime	3798	3920		
lime + shale	3920	4190		
sand	4190	4200		

DST #1 3915-3900 45"-45"-45"-45" 480' Muddy S.W. FA 60-248
SIP 1331-1311

DST #2 3982-4025 45"-45"-45"-45" 2000' Salt Water FP 89-998
SIP 1282-1282

DST #3 4021-4041 45-45-45-45 10' mud FP 10-10 SIP 20-20

USE ADDITIONAL SHEETS, IF NECESSARY, TO COMPLETE WELL RECORD.

Date Received

Charles Young
Signature

Title

Date