

KANSAS CORPORATION COMMISSION
OIL & GAS CONSERVATION DIVISION
WELL PLUGGING APPLICATION
Please TYPE Form and File ONE Copy

Form CP-1
September 2003
This Form must be Typed
Form must be Signed
All blanks must be Filled

API # 15 - 095-01153-00-00 (Identifier Number of this well). This must be listed for wells drilled since 1967; if no API # was issued, indicate original spud or completion date 7/15/1963.

Well Operator: MERIT ENERGY COMPANY KCC License #: 32446
(Owner / Company Name) (Operator's)

Address: 13727 NOEL ROAD, SUITE 500 City: DALLAS

State: TEXAS Zip Code: 75240 Contact Phone: (972) 628 - 1610

Lease: WSU (TJADEN A #7) Well #: 2 Sec. 24 Twp. 30 S. R. 08 East West

SW - SE - NW Spot Location / QQQQ County: KINGMAN

2310 Feet (in exact footage) From North / South (from nearest outside section corner) Line of Section (Not Lease Line)

1650 Feet (in exact footage) From East / West (from nearest outside section corner) Line of Section (Not Lease Line)

Check One: Oil Well Gas Well D&A Cathodic Water Supply Well SWD Docket # ENHR Docket # E-26,857 Per Operator 3-2-05 RBM/S Other: KCC Perm 3-2-05

Conductor Casing Size: _____ Set at: _____ Cemented with: _____ Sacks

Surface Casing Size: 8-5/8" Set at: 192' Cemented with: 250 Sacks

Production Casing Size: 5-1/2" Set at: 4431' Cemented with: 200 Sacks

List (ALL) Perforations and Bridgeplug Sets: 4290-98' (4/11/1966), 4270-90' (1/22/1981)

Elevation: 1599' (G.L. / K.B.) T.D.: 4420' P.B.T.D.: 4395' Anhydrite Depth: 1150', 3200'
(Stone Corral Formation)

Condition of Well: Good Poor Casing Leak Junk in Hole

Proposed Method of Plugging (attach a separate page if additional space is needed): SEE ATTACHED P&A PROCEDURE, WELLBORE SCHEMATIC

AND LOG SECTION

RECEIVED
KANSAS CORPORATION COMMISSION

FEB 28 2005

Is Well Log attached to this application as required? Yes No Is ACO-1 filed? Yes No

If not explain why? _____
CONSERVATION DIVISION
WICHITA, KS

Plugging of this Well will be done in accordance with K.S.A. 55-101 et. seq. and the Rules and Regulations of the State Corporation Commission.

List Name of Company Representative authorized to be in charge of plugging operations: JAY IVERSON

Phone: (972) 628 - 1662

Address: _____ City / State: _____

Plugging Contractor: PRATT WELL SERVICE KCC License #: 5893
(Company Name) (Contractor's)

Address: P. O. BOX 847, PRATT, KS 67124 Phone: (620) 672 - 2531 OR 6520

Proposed Date and Hour of Plugging (if known?): JANUARY, 2005 DEPENDING ON RIG AVAILABILITY

Payment of the Plugging Fee (K.A.R. 82-3-118) will be guaranteed by Operator or Agent

Date: 11/17/2004 Authorized Operator / Agent: Jay Iverson 972-628-1659
(Signature)

Mail to: KCC - Conservation Division, 130 S. Market - Room 2078, Wichita, Kansas 67202

STANOLIND OIL & GAS

#7

TJADEN 'A'

24-30-8W
SW SE NW

Contr. NOBLE DRILLING

KINGMAN County

E 1589 RB Comm. Comp. 5-6-55 IP 236 BOPD

Tops	Depth	Datum
LANS	2477	=888
MISS	4266	=2677
TD	4420	=2831

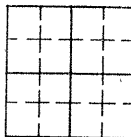
Casing

8" 203

5" 441.8

PERF 32/4290-98; ACID 500
FRAC: FLO 17 BO & 3 BW

SPIVEY POOL

INDEPENDENT OIL & GAS SERVICE
WICHITA, KANSAS

KANSAS

CORPORATION COMMISSION

Kathleen Sebelius, Governor Brian J. Moliné, Chair Robert E. Krehbiel, Commissioner Michael C. Moffet, Commissioner

February 28, 2005

Ocean Energy, Resources, Inc.
1001 Fannin St., Ste. 1600
Houston, TX 77002

RE: API Well No. 15-095-01153-00-00
TJADEN A 7
SWSNW, 24-30S-8W
KINGMAN County, Kansas

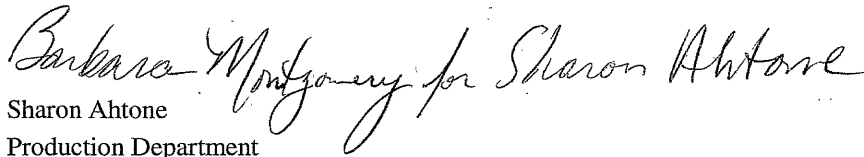
Dear Operator:

The Well Plugging application form (CP-1) for the above referenced well was received on February 28, 2005. The CP-1 is incomplete. We need to have the information marked below before the application can be processed. This information must be submitted by March 14, 2005.

- API # assigned to well, or year well was originally drilled.
- KCC License # assigned to well operator.
- Spot location / Quarter sections.
- Exact footages from nearest outside corner of section (NE, NW, SE, SW).
- Name of company representative in charge of plugging.
- Must have plugging contractor with an active KCC license #.
- Proposed date and hour of plugging.
- Authorized signature of operator/agent, and date.
- Anything marked in RED or HIGHLIGHTED.
- Must have Hard Copy of CP-1 with original signature, NOT A COPY OR FAX.
- CP-1 form must be TYPED.
- Other: Please submit a copy of the Transfer of Title to this well

Please feel free to contact me at (316) 337-6200 if you have any questions. I appreciate your attention to this matter.

Sincerely,


Sharon Ahtone
Production Department

MERIT ENERGY COMPANY

CURRENT WELLBORE

LEASE & WELL NO. WSU 2 FORMER NAME TJADEN A 7
FIELD NAME SPIVEY-GRABS COUNTY & STATE KINGMAN, KS
LOCATION SEC. 24, T30S, R08W API NO. 15-095-01153

K.B. ELEV. 1589'
D.F. ELEV. 1585'
G.L. ELEV. 1578'

OTHER FORMATION TOPS

SURFACE CASING

SIZE 8 5/8" WEIGHT 29.# DEPTH 203'
GRADE _____ SX. CMT. 250 sx CMT @ SURF _____

WELL HISTORY

1/7/55 COMPLETED IN MISSISSIPPI CHAT (4290 - 298')
- ACIDIZED w/ 500 GALS.
- FRAC'D w/ 8000 LBS SAND
9/12/69 FRAC'D w/ 50000 LBS SAND
1/25/81 COMPLETED IN MISSISSIPPI CHAT (4270 - 290')
- ACIDIZED w/ 500 GALS. 15% ACID
- FRAC'D w/ 50000 LBS 10/20 SAND

TUBING

PULLED OUT OF HOLE

RECEIVED
KANSAS CORPORATION COMMISSION

FEB 28 2005

CONSERVATION DIVISION
WICHITA, KS

MISSISSIPPI CHAT
4270 - 298'

LONGSTRING

SIZE 5 1/2" WEIGHT 14.# DEPTH 4418'
GRADE J-55 SX. CMT. 200 sx TOC 3348'

PBTD@ 4396'
TD@ 4420'

RECOMMENDATION

FEB 28 2005

CONSERVATION DIVISION
WICHITA, KS

**P&A Procedure
WSU 2 (Tjaden A 7)
15-095-01153
Sec. 24 T30S R08W
Kingman County, KS**

Objective: Plug and Abandon well due to loss of production and holes in casing.

Well Data:

K.B. – 1,589'

D.F. – 1,585'

G.L. – 1,578'

Tubing – Pulled out of hole

Casing – 5 1/2", 14 #, J-55 @ 4,418'. TOC @ +/- 3,348'.

Open Perf'd Interval – 4,270 – 4,298' Mississippi Chat

Procedure:

1. MIRU P&A rig.
2. Set CIPB @ 4,220' (no deeper).
3. Dump 2 SX CMT on CIPB.
4. Stretch Test 5 1/2" CSG. Shoot 5 1/2" CSG at free point and POOH laying down.
5. Set 35 SX plugs 50' below and 50' above Salt Section.
 - For depth of Salt Section, call District 2 office at (316) 630-4000
6. Circulate CMT up 8 5/8" CSG from 253' to surface.
7. RDMO P&A rig.
8. Cap well as necessary.

SCHLUMBERGER

GAMMA RAY NEUTRON

COMPANY S. J. ...
 WELL TRADENA No. 7
 FIELD SPRUEY
 LOCATION SEC. 24 T. 05 S. R. 8 W.
 COUNTY WINEMAN
 STATE KANSAS

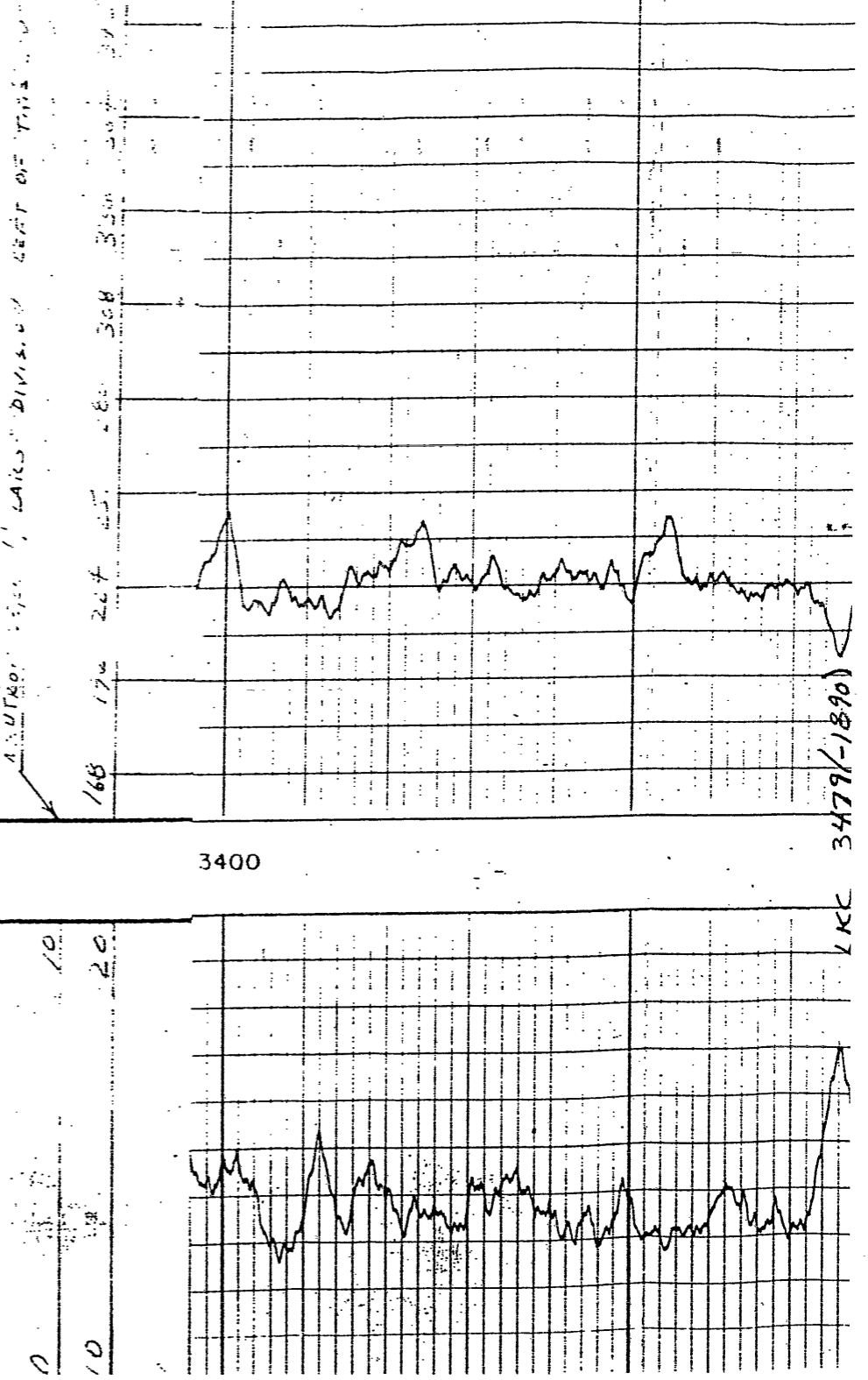
Location of Well
 Elevation: D.F.: 1585
 K.B.: 1589
 or G.L.: 578
 FILING No. _____

RUN No.	<u>ONE-NEUT</u>
Date	<u>7-7-55</u>
First Reading	<u>4417</u>
Last Reading	<u>100</u>
Feet Measured	<u>4317</u>
Csg. Schlum.	<u>200</u>
Csg. Driller	<u>204</u>
Depth Reached	<u>4420</u>
Bottom Driller	<u>4420</u>
Depth Datum	<u>K.P. 11 ABOVE G.L.</u>
Mud Nat.	<u>STAR-LN</u>
Density	<u>9.7</u>
Viscosity	<u>40</u>
Resist.	<u>0.12 @ 86 F OS. @ F</u>
Res. BHT	<u>0.012 @ 109 F @ F</u>
pH	<u>6.7 @ F @ F</u>
Wtr. Loss	<u>2.6 CC 30 min. CC 30 min.</u>
Max. Temp. F	<u>109</u>
Bit Size	<u>7 7/8"</u>
Opr. Rig Time	<u>2 1/2 HRS.</u>
Truck No.	<u>1723 WICHITA</u>
Recorded By	<u>THOMASON</u>

RECEIVED
 KANSAS CORPORATION COMMISSION
 FEB 28 2005
 CONSERVATION DIVISION
 WICHITA, KS

REMARKS GAMMA RAY B23-5353-104-1000' TO 3000' FIVE FEET FOR NEUTRON 244-100 (400) RECORDED @ 2000 FPM TO 2400' @ 7000 FPM

GAMMA RAY
 (in 1ms R0 EQ/100)



KC 3477(-1890)

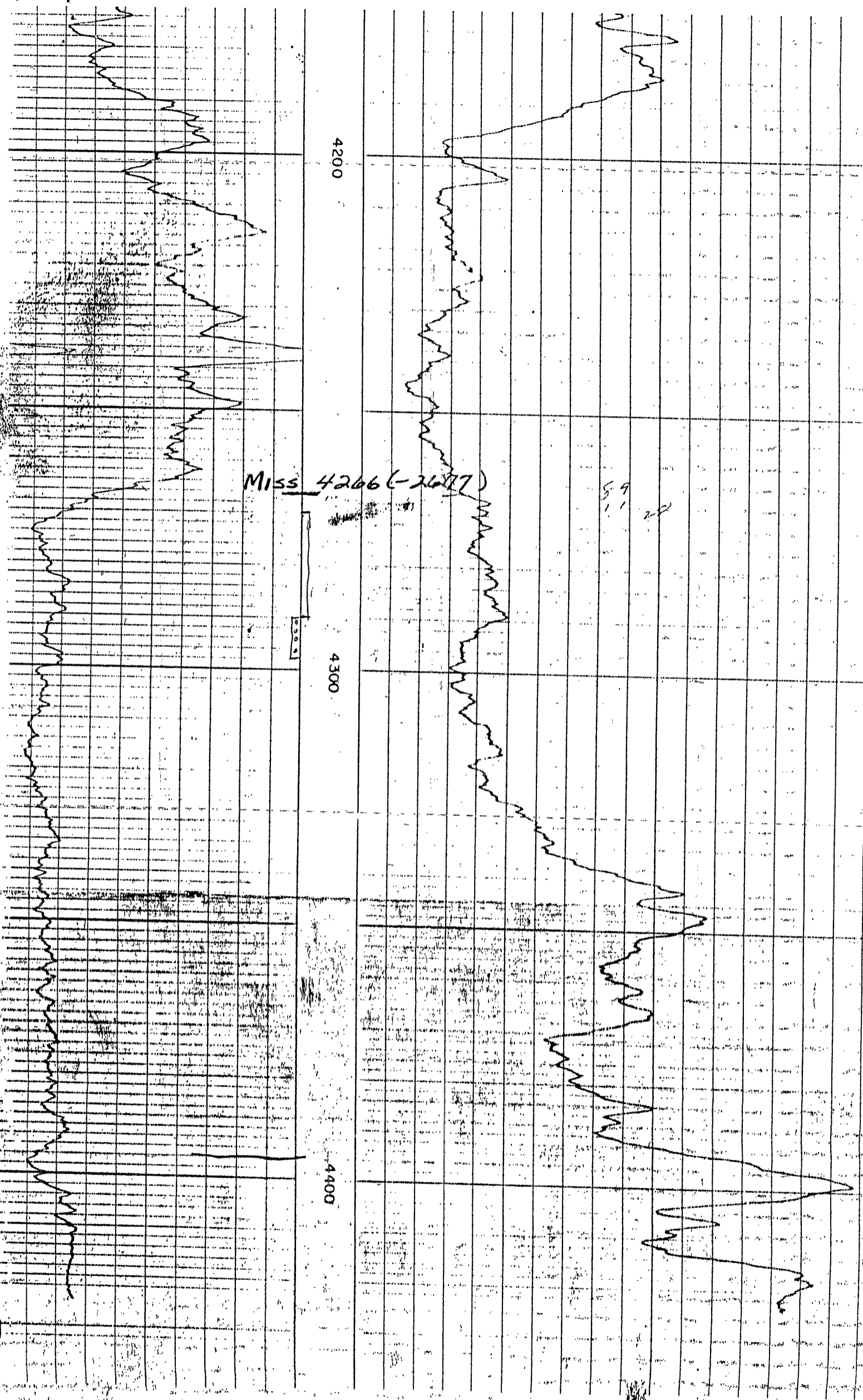
4200

MISS 4266 (-26.17)

59
11
22

4300

4400



RECEIVED
KANSAS CORPORATION COMMISSION

MAR 02 2005

MUST BE FILED FOR ALL WELLS

CONSERVATION DIVISION
WICHITA, KSAGE 2 WSU
Lease Name

West Spivey Unit

*Location Kingman County

Well #	API#/ Year Drilled, Pre 67	Footage From Section Line/Section		Type Of Well	Status
WSU #1	TJaden G2 15-095-20616 ✓ 8/77	710' FSL SE SW	1980' FWL/13 ✓	OIL	PROD.
WSU #2 *	TJaden A7 4/55 ✓	330' FSL SWSE NW	1650' FWL/24 ✓	OIL	PROD.
WSU #3	TJaden A6 3/26/55 ✓	1650' FSL SWNE SW	1650' FWL/24 ✓	OIL	PROD.
WSU #4	TJaden A5 3/15/55 ✓	385' FSL SWSE SW	1595' FWL/24 ✓	OIL	PROD.
WSU #5 *	5/4/55 TJaden A3	330' FSL SWSE NW	2650' FWL/25 ✓	OIL	PROD.
WSU #6	4/19/55 TJaden D2 ✓	990' FNL SWNW NW	330' FWL/25 ✓	OIL	PROD.
WSU #7	3/2/55 TJaden A3 ✓	330' FNL SWSWSW	4950' FEL/24 ✓	OIL	PROD.
WSU #8	3/7/55 TJaden A4 ✓	1650' FSL SWNWSW	4950' FEL/24 ✓	OIL	PROD.
WSU #9	6/28/54 TJaden A1 ✓	4950' FEL SW SWNW	2970' FSL/24 ✓	OIL	PROD.
WSU #10	8/13/54 TJaden A2 ✓	990' FNL SWNW NW	330' FWL/24 ✓	OIL	PROD.
WSU #11	5/28/54 Gans Brown #1 ✓	2300' FNL SWSENE	1000' FWL/23 ✓	OIL	PROD.
WSU #12	6/8/54 Boyle G1 ✓	330' FNL NWNENE	330' FWL NESE/23 ✓	OIL	PROD.
WSU #13	6/17/54 Boyle G2 ✓	990' FEL NWSESE	1040' FSL/23 ✓	OIL	PROD.
WSU #14	3/30/55 Boyle P3 ✓	330' FNL NWNENE	1000' FEL/26	OIL	PROD.
WSU #15	4/20/55 Boyle P1 ✓	990' FEL NWSENE	990' FSL/26	OIL	PROD.
WSU #16	8/13/64 Mess-Boyle ✓	1650' FNL SWNWSE	1000' FEL/26 ✓	OIL	PROD.
WSU #17	3/2/55 Boyle I2 ✓	330' FNL SWSWNE	330' FSL/26 ✓	OIL	PROD.
WSU #18	2/7/55 Boyle I1 ✓	990' FNL SWNWNE	2310' FEL/26 ✓	OIL	PROD.
WSU #19	7/23/54 Boyle O2 ✓	2300' FEL NWSWSE	990' FSL/23 ✓	OIL	PROD.
WSU #20	4/54 Boyle O1 ✓	2310' FEL NWNWSE	2310' FSL/23 ✓	OIL	PROD.
WSU #21	2/4/54 Trentman 1 ✓	2310' FNL SWSWNE	2310' FEL/23 ✓	OIL	PROD.
WSU #22	7/24/54 Trentman 2 ✓	990' FNL SWNWNE	2310' FEL/23 ✓	OIL	PROD.
WSU #23	4/16/54 Mark 2 ✓	1150' FNL NESE NW	2310' FWL/23 ✓	OIL	PROD.
WSU #24	8/7/53 Mark 1 ✓	2310' FNL S/2 SENW	2000' FWL/23 ✓	OIL	PROD.
WSU #25	8/20/53 Boyle B1 ✓	3630' FEL NWNESW	2310' FSL/23 ✓	OIL	PROD.
WSU #26	9/30/55 Boyle B2 ✓	1650' FWL NWSE SW	990' FSL/23 ✓	OIL	PROD.
WSU #27	8/4/54 Boyle P1 ✓	990' FNL SWNE NW	990' FEL/26	OIL	PROD.
WSU #28	9/25/54 Boyle P2 ✓	990' FEL SWSE NW	330' FSL/26	OIL	PROD.

WSU #29	10/23/55 Boyle I	✓ 330' FNL NWNESW	990' FEL/26 ✓	OIL	PROD.
WSU #30	3/30/56 Boyle C3	✓ 1650' FSL SWNWSW	330' FWL/26 ✓	OIL	PROD.
WSU #31	7/23/54 Boyle C2	✓ 330' FWL SWSWNW	2310' FNL/26 ✓	OIL	PROD.
WSU #32	6/11/54 Boyle C1	✓ 330' FWL SWNWNW	1000' FNL/26 ✓	OIL	PROD.
WSU #33	12/16/52 Boyle R2	✓ 990' FWL SESWSW	330' FSL/23 ✓	OIL	PROD.
WSU #34	3/56 Boyle R3	✓ 330' FWL SWNWSW	990' FNL/23 ✓	OIL	PROD.
WSU #35*	9/52 Boyle R1	990' FWL SENWSW	330' FNL/23	OIL	PROD.
WSU #36	1/29/59 Boyle A6	✓ 330' FSL SEBNNW	1270' FWL/23 ✓	OIL	PROD.
WSU #37	3/20/54 Boyle A1	✓ 990' FNL SWNWNW	330' FWL/23 ✓	OIL	PROD.
WSU #38	6/25/54 Boyle D2	✓ 330' FEL NENESE	2310' FSL/22 ✓	OIL	PROD.
WSU #39	6/11/54 Boyle D1	✓ 330' FSL SESESE	330' FEL/22 ✓	OIL	PROD.
WSU #40	2/8/54 Boyle M2	990' FNL SWNESE	990' FEL/27	OIL	PROD.
WSU #41	12/2/53 Boyle M1	330' FSL SWSENE	990' FEL/27	OIL	PROD.
WSU #42	7/23/54 Boyle E2	✓ 990' FEL SWNESE	990' FNL/27 ✓	OIL	PROD.
WSU #43	7/14/54 Boyle E1	✓ 1650' FSL SWNWSE	2310' FEL/27 ✓	OIL	PROD.
WSU #44	7/30/54 Boyle F	✓ 2310' FEL SWSWNE	2310' FNL/27 ✓	OIL	PROD.
WSU #45	10/5/54 Boyle Q	✓ 1650' FSL SENWSE	1650' FEL/22 ✓	OIL	PROD.
WIW #1	15-095-21688 Tjaden A	1100' FSL	4300' FEL/24	INJECTOR	ACTIVE
WIW #2	15-095-21691 5/12/94 Tjaden A	2420' FSL	4300' FEL/24	INJECTOR	ACTIVE
WIW #3	15-095-21694 5/27/94 Boyle G	660' FSL	660' FWL/23	INJECTOR	ACTIVE
WIW #4	15-095-21693 Boyle G 6/3/94	660' FSL	660' FWL/23	INJECTOR	ACTIVE
WSW #1	15-095-21690 5/2/94 Boyle H ✓	1100' FSL	4225' FEL/24	WATER SUPPLY WELL	ACTIVE

Form T-1 7/94 SIDE 2

PAGE 3 WSU

RECEIVED
KANSAS CORPORATION COMMISSION

MAR 02 2005

CONSERVATION DIVISION
WICHITA, KS

REQUEST FOR CHANGE OF OPERATOR
TRANSFER OF INJECTION AUTHORIZATION
OR TRANSFER OF SURFACE POND PERMIT

KANSAS CORPORATION COMMISSION
CONSERVATION DIVISION
130 SOUTH MARKET, ROOM 2078
WICHITA, KANSAS 67202

RECEIVED
KANSAS CORPORATION COMMISSION
MAR 02 2005
CONSERVATION DIVISION
WICHITA, KS

Check Applicable Boxes

Effective Date of Transfer 4/01/99

[X] Oil Lease: No. of Wells 45

Lease Name West Spivey Unit

[] Gas Lease: No. of Wells _____

Sec T30S-R8W

[] Saltwater Disposal Well

Legal Description of Lease: Sections 13 S/2SW,
22 E/2, 23 ALL, 24 W/2, 25 NW/4, 26 ALL, 27 E/2.

Docket Number _____

County Kingman

Spot Location: _____ feet from N/S Line
_____ feet from E/W Line

Production Zones Mississippi Chat

[X] Enhanced Recovery Proj.

Injection Zones Mississippi Chat

Docket Number E-26857

Entire Project YES

Number of Injection Wells 4

Field Name West Spivey Unit

Surface Pond Permit # _____ Feet from N/S Line of Section
(API# if Drill Pit) _____ Feet from E/W Line of Section

Identify: Emergency Pit Burn Pit Storage Pit Drill Pit

Past Operator's License No. 5615

Contact Person: Scott M. Webb

Past Operator's Name and Address:
Ocean Energy Resources, Inc.
1670 Broadway, STE 2800
Denver, Colorado 80202-4826

Phone: (303) 308-8500

Date 4/05/99

Title Regulatory Coordinator

Signature *[Signature]*

New Operator's License No. 32446

Contact Person Arlene Valliquette

New Operator's Name and Address
Merit Energy Company
12222 Merit Drive, STE 1500
Dallas, Texas 75251

Phone (972) 701-8377

Oil/Gas Purchaser Texaco Trading & Trans.
Amoco, Trident, Western Resources.
Date 4/07/99

Title Manager Regulatory Affairs

Signature *Arlene Valliquette*

ACKNOWLEDGEMENT OF TRANSFER: The above request for transfer of injection authorization, surface pond permit # _____ has been noted, approved and duly recorded in the records of the Kansas Corporation Commission. This acknowledgement of transfer pertains to Kansas Corporation Commission records only and does not convey any ownership interest in the above injection well(s) or pond permit.

_____ is acknowledged as the new operator and may continue to inject fluids as authorized by Docket # _____. Recommended action _____

_____ is acknowledged as the new operator of the above named lease containing the surface pond permitted by # _____.

Date _____
Authorized Signature _____

Date _____
Authorized Signature _____

REQUEST FOR CHANGE OF OPERATOR
TRANSFER OF INJECTION AUTHORIZATION
OR TRANSFER OF SURFACE POND PERMIT

KANSAS CORPORATION COMMISSION
CONSERVATION DIVISION
130 SOUTH MARKET, ROOM 2078
WICHITA, KANSAS 67202

Check Applicable Boxes

Effective Date Of Transfer 4/01/99

[X] Oil Lease: No. of Wells 45

Lease Name West Spivey Unit

[] Gas Lease: No. of Wells _____

_____ Sec T30S-R8W

[] Saltwater Disposal Well

Legal Description of Lease: Sections 13 S/2SW,

Docket Number _____

22 E/2, 23 ALL, 24 W/2, 25 ~~ALL~~, 26 ALL, 27 E/2.

Spot Location: _____ feet from N/S Line

County Kingman ALL

_____ feet from E/W Line

Production Zones Mississippi Chat

[X] Enhanced Recovery Proj.

Injection Zones Mississippi Chat

Docket Number E-26857

Entire Project YES

Number of Injection Wells 4

Field Name West Spivey Unit

Surface Pond Permit # _____

_____ Feet from N/S Line of Section

(API# if Drill Pit) _____

_____ Feet from E/W Line of Section

Identify: Emergency Pit

Storage Pit

Burn Pit

Drill Pit

Past Operator's License No. 5615 ✓

Contact Person: Scott M. Webb

Past Operator's Name and Address:

Phone: (303) 308-8500

Ocean Energy Resources, Inc.

Date 4/05/99

1670 Broadway, STE 2800

Denver, Colorado 80202-4826

Title Regulatory Coordinator

Signature *[Signature]*

New Operator's License No. 32446 ✓

Contact Person Arlene Valliquette

New Operator's Name and Address

Phone (972) 701-8377

Merit Energy Company

Oil/Gas Purchaser Texaco Trading & Trans.

12222 Merit Drive, STE 1500

Amoco, Trident, Western Resources.

Dallas, Texas 75251

Date 4/07/99

Title Manager Regulatory Affairs

Signature *Arlene Valliquette*

ACKNOWLEDGEMENT OF TRANSFER: The above request for transfer of injection authorization, surface pond permit # _____ has been noted, approved and duly recorded in the records of the Kansas Corporation Commission. This acknowledgement of transfer pertains to Kansas Corporation Commission records only and does not convey any ownership interest in the above injection well(s) or pond permit.

_____ is acknowledged as the new operator and may continue to inject fluids as authorized by Docket # _____ Recommended action _____

_____ is acknowledged as the new operator of the above named lease containing the surface pond permitted by # _____

Date _____

Date _____

Authorized Signature

Authorized Signature

STATE OF KANSAS

CONSERVATION DIVISION

WICHITA, KANSAS

Form T1 7/94

WRJR 8/4/99 PROD 921 8/31/99 UIC TME

MUST BE FILED FOR ALL WELLS

GE 2 WSU
Lease Name

West Spivey Unit

*Location

Kingman County

Well #	API#/ Year Drilled, Pre 67	Footage From Section Line/Section		Type Of Well	Status
TJADEN 6 WSU #1 2	15-095-20616 8/77	710' FSL	1980' FWL/13	OIL	PROD.
TJADEN A 5 WSU #2	4/55 15-095-01151	330' FSL	1650' FWL/24	OIL	PROD.
TJADEN A 6 WSU #3	3/26/55 15-095-01152	1650' FSL	1650' FWL/24	OIL	PROD.
WSU #4	3/15/55	385' FSL	1595' FWL/24	OIL	PROD.
WSU #5	5/4/55	330' FSL	250' FWL/25	OIL	PROD.
TJADEN B 2 WSU #6	4/19/55 15-095-01154	990' FNL	330' FWL/25	OIL	PROD.
TJADEN A 2 WSU #7 3	3/2/55 15-095-01149	330' FSL	4950' FEL/24	OIL	PROD.
TJADEN A 4 WSU #8	3/7/55 15-095-01150	1650' FSL	4950' FEL/24	OIL	PROD.
TJADEN A 1 WSU #9	6/28/54 15-095-01147	4950' FEL	2970' FSL/24	OIL	PROD.
TJADEN A 2 WSU #10	8/13/54 15-095-01148	990' FNL	330' FWL/24	OIL	PROD.
WSU #11	5/28/54	2300' FNL	1000' FWL/23	OIL	PROD.
WSU #12	6/8/54	330' FNL	330' FWL NESE/23	OIL	PROD.
WSU #13	6/17/54	990' FEL	1040' FSL/23	OIL	PROD.
WSU #14	3/30/55	330' FNL	1000' FEL/26	OIL	PROD.
WSU #15	4/20/55 NR	990' FEL	990' FSL/26	OIL	PROD.
WSU #16	8/13/64	1650' FNL	1000' FEL/26	OIL	PROD.
WSU #17	3/2/55 NR	330' FWL	330' FSL/26	OIL	PROD.
Boyle I 1 WSU #18	2/7/55 15-095-00640	990' FNL	2310' FEL/26	OIL	PROD.
Boyle C 2 WSU #19	7/23/54 15-095-00788	2300' FEL	990' FSL/23	OIL	PROD.
Boyle C 1 WSU #20	4/54 15-095-00787	2310' FEL	2310' FSL/23	OIL	PROD.
TRENTMAN 1 WSU #21	2/4/54 15-095-00896	2310' FNL	2310' FEL/23	OIL	PROD.
TRENTMAN WSU #22 2	7/24/54 15-095-01142	990' FNL	2310' FEL/23	OIL	PROD.
WSU #23	4/16/54 NR	1150' FNL	2310' FWL/23	OIL	PROD.
WSU #24	8/7/53 NR	2310' FNL	2000' FWL/23	OIL	PROD.
WSU #25	8/20/53 NR	3630' FEL	2310' FSL/23	OIL	PROD.
WSU #26	9/30/55 NR	1650' FWL	990' FSL/23	OIL	PROD.
WSU #27	8/4/54 NR	990' FNL	990' FEL/26	OIL	PROD.
WSU #28	9/25/54 NR	990' FEL	330' FSL/26	OIL	PROD.

MAY 2 1955

JUL - 6

RECORDED & INDEXED
Wichita Kansas

CO. 100-100-100
100-100-100

Boyle C 3 WSU #29	10/23/55	15-095-D1193	330' FNL	990' FEL/26	OIL	PROD.
Boyle C 3 WSU #30	3/30/56	15-095-00900	1650' FSL	330' FWL/26	OIL	PROD.
Boyle C 2 WSU #31	7/23/54	15-095-00398	330' FWL	2310' FNL/26	OIL	PROD.
WSU #32	6/11/54		330' FWL	1000' FNL/26	OIL	PROD.
Boyle 2 WSU #33	12/16/52	15-095-00309	990' FWL	330' FSL/23	OIL	PROD.
Boyle 1 WSU #34	3/56	15-095-00201	330' FWL	990' FNL/23	OIL	PROD.
WSU #35	9/52		990' FWL	330' FNL/23	OIL	PROD.
WSU #36	1/29/59		330' FSL	1270' FWL/23	OIL	PROD.
WSU #37	3/20/54		990' FNL	330' FWL/23	OIL	PROD.
Boyle D 2 WSU #38	6/25/54	15-095-00622	330' FEL	2310' FSL/22	OIL	PROD.
Boyle D 1 WSU #39	6/11/54	15-095-00621	330' FSL	330' FEL/22	OIL	PROD.
WSU #40	2/5/54		990' FNL	990' FEL/27	OIL	PROD.
WSU #41	12/2/53		330' FSL	990' FEL/27	OIL	PROD.
WSU #42	7/23/54		990' FEL	990' FNL/27	OIL	PROD.
Boyle E 1 WSU #43	7/14/54	15-095-00382	1650' FSL	2310' FEL/27	OIL	PROD.
Boyle F 1 WSU #44	7/30/54	15-095-00370	2310' FEL	2310' FNL/27	OIL	PROD.
Boyle E 2 WSU #45	10/5/54	15-095-00623	1650' FSL	1650' FEL/22	OIL	PROD.
WIW #1	15-095-21688		1100' FSL	4300' FEL/24	INJECTOR	ACTIVE
WIW #2	15-095-21691		2420' FSL	4300' FEL/24	INJECTOR	ACTIVE
WIW #3	15-095-21694		660' FSL	660' FWL/23	INJECTOR	ACTIVE
WIW #4	15-095-21693	6/3/94	660' FSL	660' FWL/23	INJECTOR	ACTIVE
WSW #1	15-095-21690	5/2/94	1100' FSL	4225' FEL/24	WATER SUPPLY WELL	ACTIVE

AGE 3 WSU

Form T-1 7/94 SIDE 2

⊗ Same well

RECORDED
STATE OF KANSAS

Oil and Gas Division
Kansas

Spivey v
WF
K (Kansas
Parents-#1

OIL-K

5

MEMORANDUM

TO : Jim L. Wolfe
Ed McLaughlin
Sue Ryan
Debbi Greek
David Baine
Clyde Calvert
Rose Mary Lakin
Ona Ragland
Rene Daigre
Brit Miller

RECEIVED

FEB 1 1994

MARKETING

CONSERVATION DIVISION
WICHITA, KS

MAR 02 2005

RECEIVED
KANSAS CORPORATION COMMISSION

FROM : Richard A. Burns

DATE : February 1, 1994

RE : Formation West Spivey Unit
Kingman Co., Kansas

The West Spivey Unit is effective February 1, 1994. The following leases have been combined into the West Spivey Unit:

- Boyle A
- Boyle B
- Boyle C
- Boyle D
- Boyle E
- Boyle F
- Boyle G
- Boyle H
- Boyle I
- Boyle J
- Boyle M
- Boyle O
- Boyle P
- Boyle Q
- Boyle R
- Messenger - Boyle
- Brown
- Tjaden A
- Tjaden D
- Trentman

Mark - originally operated by EMI/Colt
Rall - originally operated by EMI/Colt (also contains Spivey SWD disposal well)

Attached to this memo is a plat map of the West Spivey Unit.

The wells within the West Spivey Unit will change names. I have attached the conversion between the old and new names. Also attached is the correlation between the West Spivey Unit tract

number and the lease name.

All the existing tank batteries will remain in place. The tank battery will take the current name of the lease on which it resides. Therefore, there will be effectively no change in tank battery names. All tank battery oil and gas metering will be remain in place. Production can still be accounted for on a tank battery/tract/lease basis. However, a new "division of interest" must be applied to the lease.

The West Spivey Unit agreements require an equipment inventory to be taken. This inventory should be conducted as quickly as possible.

If there are any further questions please contact me at extension 726 (573-4726). Thanks

RECEIVED
KANSAS CORPORATION COMMISSION

MAR 02 2005

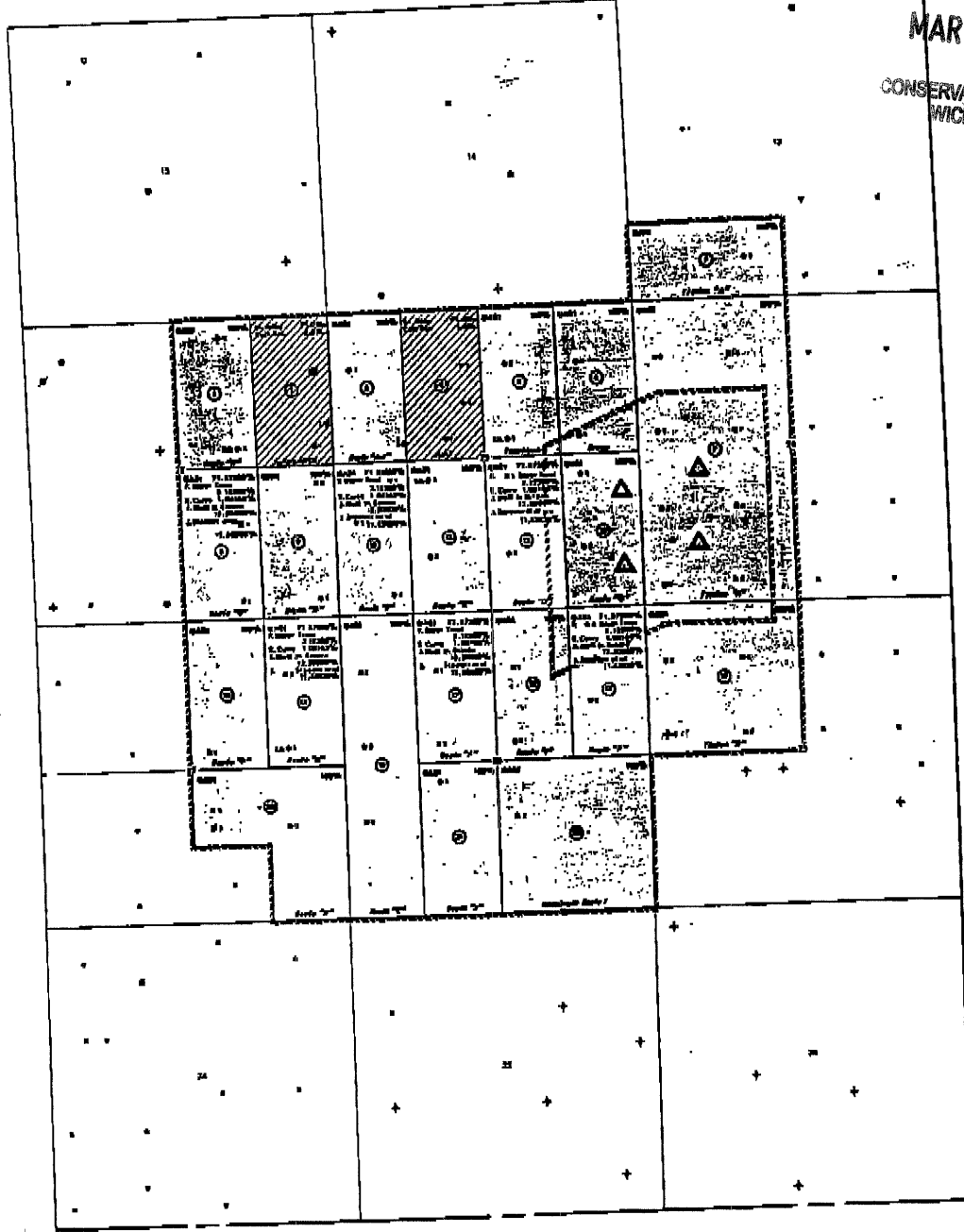
CONSERVATION DIVISION
WICHITA, KS

R 8 W

RECEIVED
KANSAS CORPORATION COMMISSION

MAR 02 2005

CONSERVATION DIVISION
WICHITA, KS



T
30
S

- Exposed Buried/Well Production Landfield
- GARR Full Interest Landfield
- GARR Full Interest Landfield
- Well/Drillhole Data
- Well/Drillhole Data
- Injection Well

GENERAL ATLANTIC
RESOURCES, INC.

SPIVEY-GRABS WATERFLOOD AREA
PONDRAW COUNTY, KANSAS

LAND MAP

DATE: 02/07/05 SHEET 14 OF 1007

WEST SPIVEY UNIT NAME CONVERSION

<u>OLD NAME</u>	<u>NEW NAME/NUMBER</u>
Tjaden G No. 2 ✓	West Spivey Unit No. 1
Tjaden A No. 7 ✓	West Spivey Unit No. 2
Tjaden A No. 6	West Spivey Unit No. 3
Tjaden A No. 5	West Spivey Unit No. 4
Tjaden A No. 3	West Spivey Unit No. 7
Tjaden A No. 4	West Spivey unit No. 8
Tjaden A No. 1	West Spivey Unit No. 9
Tjaden A No. 2	West Spivey Unit No. 10
Tjaden D No. 3	West Spivey Unit No. 5
Tjaden D No. 2	West Spivey Unit No. 6
Brown No. 1	West Spivey Unit No. 11
Boyle G No. 1	West Spivey Unit No. 12
Boyle G No. 2	West Spivey Unit No. 13
Boyle P No. 3	West Spivey Unit No. 14
Boyle P No. 4	West Spivey Unit No. 15
Boyle P No. 1	West Spivey Unit No. 27
Boyle P No. 2	West Spivey Unit No. 28
Messenger Boyle No. 1	West Spivey Unit No. 16
Boyle I No. 2	West Spivey Unit No. 17
Boyle I No. 1	West Spivey Unit No. 18
Boyle O No. 2	West Spivey Unit No. 19
Boyle O No. 1	West Spivey Unit No. 20
Trentman NO. 1	West Spivey Unit No. 21
Trentman No. 2	West Spivey Unit No. 22
Mark No. 2	West Spivey Unit No. 23
Mark No. 1	west Spivey Unit No. 24
Boyle B No. 1	West Spivey Unit No. 25
Boyle B No. 2	West Spivey Unit No. 26
Boyle J No. 1	West Spivey Unit No. 29
Boyle C No. 3	West Spivey Unit No. 30
Boyle C No. 2	West Spivey Unit No. 31
Boyle C No. 1	West Spivey Unit No. 32
Boyle R No. 2	West Spivey Unit No. 33

RECEIVED
 KANSAS CORPORATION COMMISSION
 MAR 02 2005
 CONSERVATION DIVISION
 WICHITA, KS

~~Boyle R No. 3~~
Boyle R No. 1
~~Boyle A No. 2~~
~~Boyle A No. 1~~

~~Boyle D No. 2~~
~~Boyle D No. 1~~

Boyle M No. 2
Boyle M No. 1

~~Boyle E No. 2~~
~~Boyle E No. 1~~

~~Boyle F No. 1~~

~~Boyle Q No. 2~~

West Spivey Unit No. 34
West Spivey Unit No. 35
West Spivey Unit No. 36
West Spivey Unit No. 37

West Spivey Unit No. 38
West Spivey Unit No. 39

West Spivey Unit No. 40
West Spivey Unit No. 41

West Spivey Unit No. 42
West Spivey Unit No. 43

West Spivey Unit No. 44

West Spivey Unit No. 45

RECEIVED
KANSAS CORPORATION COMMISSION
MAR 02 2005
CONSERVATION DIVISION
WICHITA, KS

WEST SPIVEY UNITLEASE/TANK BATTERY - TRACT

<u>LEASE / TANK BATTERY</u>	<u>TRACT NO.</u>
Boyle A	3
Boyle B	11
Boyle C	16
Boyle D	9
Boyle E	20
Boyle F	14
Boyle G	13
Boyle H	1
Boyle I	18
Boyle J	21
Boyle K	15
Boyle L	12
Boyle M	8
Boyle N	17
Boyle O	10
Boyle P	22
Boyle Q	6
Boyle R	4
Messenger-Boyle	2
Brown	7
Mark	19
Rall	5
Tjaden A	
Tjaden D	
Trentman	

RECEIVED
KANSAS CORPORATION COMMISSION
MAR 02 2005
CONSERVATION DIVISION
WICHITA, KS

RECEIVED
KANSAS CORPORATION COMMISSION

MAR 02 2005

CONSERVATION DIVISION
WICHITA, KSWEST SPIVEY UNIT WELLS
KINGMAN COUNTY, KANSAS

Unit Name	Lease Name	Old Well Name (Operator)	Qtr/Qtr/Qtr	S-T-R	Tract No.	KDOR Lease No.
WSU #37	CJ Boyle A #1		SW NW NW	23-30S-8W	3	106435
WSU #36	CJ Boyle A #2		SE SW NW	23-30S-8W	3	106435
WSU #24	Arnold Mark #1		S/2 SE NW	23-30S-8W	4	106360
WSU #23	Arnold Mark #2		NE SE NW	23-30S-8W	4	106360
WSU #21	Trentman #1		SW SW NE	23-30S-8W	5	106308
WSU #22	Trentman #2		SW NW NE	23-30S-8W	5	106308
WSU #11	Gans Brown #1		SW SE NE	23-30S-8W	6	106296
WSU #9	J. Tjaden A #1		SW SW NW	24-30S-8W	7	106301
WSU #10	J. Tjaden A #2		SW NW NW	24-30S-8W	7	106301
WSU #7	J. Tjaden A #3		SW SW SW	24-30S-8W	7	106301
WSU #8	J. Tjaden A #4		SW NW SW	24-30S-8W	7	106301
WSU #4	J. Tjaden A #5		SW SE SW	24-30S-8W	7	106301
WSU #3	J. Tjaden A #6		SW NE SW	24-30S-8W	7	106301
WSU #2	J. Tjaden A #7		SW SE NW	24-30S-8W	7	106301
WSU #1	J. Tjaden G #2		SE SW	13-30S-8W	7	
WSU #1 WTW	WSU #1 WTW		NE SW SW	24-30S-8W	7	
WSU #1 WSW	WSU #1 WSW		NE SW SW	24-30S-8W	7	
WSU #2 WTW	WSU #2 WTW		NE NW SW	24-30S-8W	7	
WSU #3 WTW	WSU #3 WTW		NW NW SW	24-30S-8W	7	
WSU #45	CJ Boyle Q #2	Boyle E (Pickrell Drilling)	SE NW SE	22-30S-8W	8	106287
WSU #39	CJ Boyle D #1		SE SE SE	22-30S-8W	9	106286
WSU #38	CJ Boyle D #2		NE NE SE	22-30S-8W	9	106286
WSU #35 *	CJ Boyle R #1	Boyle #1 (Pickrell Drilling)	SE NW SW	23-30S-8W	10	106434
WSU #33	CJ Boyle R #2	Boyle #2 (Pickrell Drilling)	SE SW SW	23-30S-8W	10	106434
WSU #34	CJ Boyle R #3	Boyle #3 (Pickrell Drilling)	SW NW SW	23-30S-8W	10	106434
WSU #25	CJ Boyle B #1		NW NE SW	23-30S-8W	11	106284
WSU #26	CJ Boyle B #2		NW SE SW	23-30S-8W	11	106284
WSU #20	CJ Boyle O #1	Boyle C #1 (Pickrell Drlg)	NW NW SE	23-30S-8W	12	106437
WSU #19	CJ Boyle O #2	Boyle C #2 (Pickrell Drlg)	NW SW SE	23-30S-8W	12	106437
WSU #12	CJ Boyle G #1		NW NE SE	23-30S-8W	13	106289
WSU #13	CJ Boyle G #2		NW SE SE	23-30S-8W	13	106289
WSU #4 WTW	WSU #4 WTW		SE SE	23-30S-8W	13	
WSU #44	CJ Boyle F #1		SW SW NE	27-30S-8W	14	106288
WSU #41 *	CJ Boyle M #1	Boyle A #1 (Pickrell Drlg)	SW SE NE	27-30S-8W	15	128674
WSU #40 *	CJ Boyle M #2	Boyle A #2 (Pickrell Drlg)	SW NE NE	27-30S-8W	15	128674
WSU #32	CJ Boyle C #1		SW NW NW	26-30S-8W	16	106285
WSU #31	CJ Boyle C #2		SW SW NW	26-30S-8W	16	106285
WSU #30	CJ Boyle C #3		SW NW SW	26-30S-8W	16	106285
WSU #27 *	CJ Boyle P #1	Boyle D #1 (Pickrell Drilling)	SW NE NW	26-30S-8W	17	106438
WSU #28 *	CJ Boyle P #2	Boyle D #2 (Pickrell Drilling)	SW SE NW	26-30S-8W	17	106438
WSU #14 *	CJ Boyle P #3	Boyle D #3 (Pickrell Drilling)	NW NE NE	26-30S-8W	17	106438
WSU #15 *	CJ Boyle P #4	Boyle D #4 (Pickrell Drilling)	NW SE NE	26-30S-8W	17	106438
WSU #18	CJ Boyle I #1		SW NW NE	26-30S-8W	18	106290
WSU #17	CJ Boyle I #2		SW SW NE	26-30S-8W	18	106290

RECEIVED
KANSAS CORPORATION COMMISSION

MAR 02 2005

CONSERVATION DIVISION
WICHITA, KS

*WEST SPIVEY UNIT WELLS
KINGMAN COUNTY, KANSAS*

<i>Unit Name</i>	<i>Lease Name</i>	<i>Old Well Name (Operator)</i>	<i>Qtr/Qtr/Qtr</i>	<i>S-T-R</i>	<i>Tract No.</i>	<i>KDOR Lease No.</i>
WSU #6	J. Tjaden D #2		SW NW NW	25-30S-8W	19	106304
WSU #5	J. Tjaden D #3		SW SE NW	25-30S-8W	19	106304
WSU #43	CJ Boyle E #1		SW NW SE	27-30S-8W	20	
WSU #42	CJ Boyle E #2		SW NE SE	27-30S-8W	20	
WSU #29	CJ Boyle J #1		NW NE SW	26-30S-8W	21	106291
WSU #16	Messenger-Boyle #1 Boyle #1 (Abercombie)		SW NW SE	26-30S-8W	22	131912

KANSAS

CORPORATION COMMISSION

Kathleen Sebelius, Governor Brian J. Moline, Chair Robert E. Krehbiel, Commissioner Michael C. Moffet, Commissioner

NOTICE OF RECEIPT OF WELL PLUGGING APPLICATION (CP-1)

Merit Energy Company
13727 Noel Rd., Ste 500
Dallas, TX 75240

March 03, 2005

Re: WEST SPIVEY UNIT #2
API 15-095-01153-00-00
SWSNW 24-30S-8W, 2310 FNL 1650 FWL
KINGMAN COUNTY, KANSAS

Dear Operator:

This letter is to notify you that the Conservation Division is in receipt of your plugging proposal, form CP-1, for the above-captioned well.

Your CP-1 has been reviewed by the Conservation Division central office for completeness and to verify license numbers. The plugging proposal will now be forwarded to the district office listed below for review of your proposed method of plugging.

Please contact the district office for approval of your proposed plugging method at least five (5) days before plugging the well, pursuant to K.A.R. 82-3-113 (b). If a workover pit will be used during the plugging of the well it must be permitted. A CDP-1 form must be filed and approved prior to the use of the pit.

The Conservation Division's review of form CP-1, either in the central or district office, does not include an inquiry into well ownership or the filing operator's legal right to plug the well.

This notice in no way constitutes authorization to plug the above-captioned well by persons not having legal rights of ownership or interest in the well. This notice is void after ninety (90) days from the above date.

District: #2
3450 N. Rock Road, Suite 601
Wichita, KS 67226
(316) 630-4000

Sincerely


David P. Williams
Production Supervisor