

STATE CORPORATION COMMISSION OF KANSAS
OIL & GAS CONSERVATION DIVISION
WELL COMPLETION OR RECOMPLETION FORM
ACO-1 WELL HISTORY
DESCRIPTION OF WELL AND LEASE

Operator: License # 6278
Name PEIX Petroleum Corporation
Address 1616 Glenarm Pl., Suite 1700
City/State/Zip Denver, CO 80202

Purchaser Koch Oil Company
Wichita, Kansas

Operator Contact Person Robert E. Johnson
Phone President

Contractor: License # 6033
Name Murfin Drilling Company

Wellsite Geologist Bill Johnson
Phone 316-267-2184

Designate Type of Completion
 New Well Re-Entry Workover
 Oil SWD Temp Abd
 Gas Inj Delayed Comp.
 Dry Other (Core, Water Supply etc.)

If OWWO: old well info as follows:
Operator
Well Name
Comp. Date
Old Total Depth

WELL HISTORY

Drilling Method:
 Mid Rotary Air Rotary Cable
12/12/85 12/19/85 1/3/86
Spud Date Date Reached TD Completion Date
3682
Total Depth PBTD

Amount of Surface Pipe Set and Cemented at 346 feet
Multiple Stage Cementing Collar Used? Yes No
If yes, show depth set 1738 feet
If alternate 2 completion, cement circulated
from 1738 feet depth to surface w/ 650sx cmt
Cement Company Name Allied Cementing Co.
Invoice # 45850, 45852

API NO. 15-163-22,834-00-00
County Rooks
SW SE NW Sec 19 Twp 6 Rge 19 East
XX West

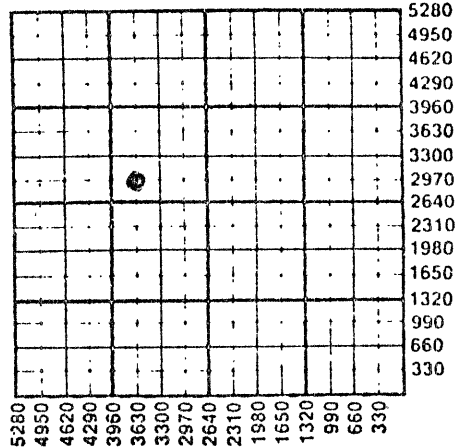
2970 Ft North from Southeast Corner of Section
3630 Ft West from Southeast Corner of Section
(Note: Locate well in section plat below)

Lease Name Buss "A" Well # 1

Field Name McClurg West

Producing Formation Reagan

Elevation: Ground 2144 KB 2149
Section Plat



WATER SUPPLY INFORMATION
Disposition of Produced Water: Disposal
Docket # Repressuring

Questions on this portion of the ACO-1 call:
Water Resources Board (913) 296-3717

Source of Water:
Division of Water Resources Permit #
 Groundwater.....Ft North from Southeast Corner
(Well)Ft West from Southeast Corner of
Sec Twp Rge East West
 Surface Water.....Ft North from Southeast Corner
(Stream, pond etc).....Ft West from Southeast Corner
Sec Twp Rge East West
 Other (explain) Purchased water from Byron
Carpenter, Stockton, Kansas
(purchased from city, R.W.D. #)

INSTRUCTIONS: This form shall be completed in duplicate and filed with the Kansas Corporation Commission, 200 Colorado Derby Building, Wichita, Kansas 67202, within 90 days after completion or recompletion of any well. Rule 82-3-130 and 82-3-107 apply.
Information on side two of this form will be held confidential for a period of 12 months if requested in writing and submitted with the form. See rule 82-3-107 for confidentiality in excess of 12 months.
One copy of all wireline logs and drillers time log shall be attached with this form. Submit CP-4 form with all plugged wells. Submit CP-111 form with all temporarily abandoned wells.

All requirements of the statutes, rules and regulations promulgated to regulate the oil and gas industry have been fully complied with and the statements herein are complete and correct to the best of my knowledge.

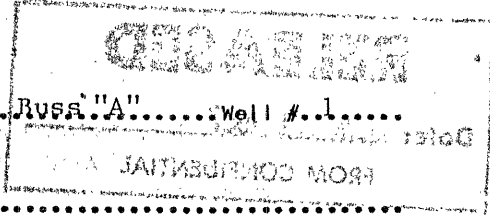
Signature [Signature]
Title Robert E. Johnson, President Date 2/17/86

Subscribed and sworn to before me this 7th day of February 1986
Notary Public Laura J. Engle
Date Commission Expires 7/7/87

K.C.C. OFFICE USE ONLY
 Letter of Confidentiality Attached
 Wireline Log Received
 Drillers Time Log Received
Distribution
 KCC SWD/Rep NGPA
 KGS Plug Other
(Specify)

RECEIVED
FEB 10 1986

SIDE TWO



Operator Name PFTX Petroleum Corporation Lease Name Russ "A" Well # 1

Sec 19 Twp 6 S Rge 19 East West County Rooks

WELL LOG

INSTRUCTIONS: Show important tops and base of formations penetrated. Detail all cores. Report all drill stem tests giving interval tested, time tool open and closed, flowing and shut-in pressures, whether shut-in pressure reached static level, hydrostatic pressures, bottom hole temperature, fluid recovery, and flow rates if gas to surface during test. Attach extra sheet if more space is needed. Attach copy of log.

Drill Stem Tests Taken [X] Yes [] No
Samples Sent to Geological Survey [X] Yes [] No
Cores Taken [] Yes [X] No

Formation Description [X] Log [] Sample

Topeka-LS, slightly fossiliferous, fine crystalline, NS
Heebner-SH, black, Carbonaceous
Toronto-LS, tan-dk. tan, fine crystalline, some pyrite, fairly dirty, tight, NS
LKC-LS, tan-lt. brown, fine crystalline, chalky, partly oolitic, fair to poor porosity some free oil, good fluorescence, some effervescent porosity
Arbuckle- LS, tan to pink, dolomite tan to pink, sucrosic, very tight, NS
Reagan-QTZ SS: clear, tan to lt. brown, med to coarse grained, subrounded, very good porosity, some free oil

Table with 3 columns: Name, Top, Bottom. Rows include Anhydrite, Topeka, Heebner, Toronto, LKC, Base KC, Arbuckle, Reagan, Granite Wash.

DST #1: 3333-3402 30-45-45-45. 1st open-weak 1 1/4" blow, final open - weak 1/4" blow
IFP 50-60 psi FFP 80-111 psi
ISIP 1116 FSIP 1066 TEMP. 104°F
Recovered 70' oil cut mud, 20% oil, 80% mud.

DST #2: 3419-3560 30-45-45-45. 1st open-weak 3" blow, 2nd open-weak 1/2" blow,
IFP 80-101, FFP 111-121, ISIP 1146, FSIP 1106. Recovered 65' heavily oil cut mud-20% oil, 80% mud and 60' slightly oil cut mud - 3% oil, 97% mud

CASING RECORD [] New [] Used
Report all strings set-conductor, surface, intermediate, production, etc.

Table with 8 columns: Purpose of String, Size Hole Drilled, Size Casing Set (In O.D.), Weight Lbs/Ft., Setting Depth, Type of Cement, #Sacks Used, Type and Percent Additives. Rows for surface and production.

PERFORATION RECORD
Shots Per Foot Specify Footage of Each Interval Perforated
Acid, Fracture, Shot, Cement Squeeze Record (Amount and Kind of Material Used) Depth

TUBING RECORD
Size Set At Packer at Liner Run [] Yes [X] No

Date of First Production Producing Method
1/17/86 [] Flowing [X] Pumping [] Gas Lift [] Other (explain)

Estimated Production Per 24 Hours
Oil Gas Water Gas-Oil Ratio Gravity
6 Bbls TSTM MCF Bbls CFPB 26-27

METHOD OF COMPLETION Production Interval
Disposition of gas: [] Vented [] Sold [] Used on Lease [] Open Hole [X] Perforation [] Other (Specify)
3636-3642
3450-3454
[] Dually Completed [] Commingled

RELEASED

MAY 11 1987

FROM CONFIDENTIAL

WELL LOG (cont.)

Operator: PETX Petroleum Corporation Lease: Buss "A" #1

Section 19-6S-19W, Rooks County, Kansas

DST #3: 3627-3680 30-45-45-45. Fair 4" blow on 1st open, weak 1/2" blow on final open.
IFP 60-80 psi, FF $\frac{1}{4}$ 90-111 psi, ISIP 656, FSIP 636. TEMP. 107°F
Recovered 150' gas cut oil-20% gas, 80% oil.
" 60' gassy mud cut oil- 10% gas, 50% oil, 40% mud.
" 60' oil cut watery mud-15% oil, 12% water, 73% mud.

CONFIDENTIAL

FEB 10 1986
State Geological Survey
WICHITA BRANCH

RECEIVED
STATE CORPORATION COMMISSION

FEB 10 1986

CONSERVATION DIVISION
Wichita, Kansas

RELEASED

MAY 11 1987

FROM CONFIDENTIAL