

**KANSAS CORPORATION COMMISSION
OIL & GAS CONSERVATION DIVISION
WELL PLUGGING APPLICATION**
Please TYPE Form and File ONE Copy

Form CP-1
September 2003
**This Form must be Typed
Form must be Signed
All blanks must be Filled**

API # 15 - 175-21005-00-00 (Identifier Number of this well). This must be listed for wells drilled since 1967; if no API # was issued,

indicate original spud or completion date _____.

Well Operator: Marlin Oil Corporation KCC License #: 9228
(Owner / Company Name) (Operator's)
 Address: P.O. Box 14630 City: Oklahoma City
 State: Oklahoma Zip Code: 73113 Contact Phone: (405) 478 - 1900
 Lease: BOLES Well #: 3-16 Sec. 16 Twp. 35 S. R. 34 East West

12/05

NW NW - 3W - SW/4 - NW/4 Spot Location / QQQQ County: Seward
2551 1980 KCC-SKA-3-24-05 - Per RBDMS & Well log.
 Feet (in exact footage) From North / South (from nearest outside section corner) Line of Section (Not Lease Line)
4690 660 Feet (in exact footage) From East / West (from nearest outside section corner) Line of Section (Not Lease Line)

Check One: Oil Well Gas Well D&A Cathodic Water Supply Well
 SWD Docket # _____ ENHR Docket # _____ Other: _____

Conductor Casing Size: _____ Set at: _____ Cemented with: _____ Sacks
 Surface Casing Size: 8-5/8" Set at: 1701' Cemented with: 825 Sacks
 Production Casing Size: 4-1/2" Set at: 6796' Cemented with: 275 Sacks

List (ALL) Perforations and Bridgeplug Sets: Perforations: 6404-6410'; 6343-6358'; 6320-6326'.
CIBP set at 6335'

Elevation: 2905/2916' (G.L. / K.B.) T.D.: 6800' PBSD: 6335' Anhydrite Depth: +/- 1660', based on offset well.
(Stone Corral Formation)

Condition of Well: Good Poor Casing Leak Junk in Hole

Proposed Method of Plugging (attach a separate page if additional space is needed): Set CIBP at 6270' and cap w/ 2sx cement. Load hole with mud. Cut off 4-1/2" casing at +/- 1050', place 30sx cement plug from 660-560' and a 10sx cement plug from 34-4'. Weld on ID cover plate.

Is Well Log attached to this application as required? Yes No Is ACO-1 filed? Yes No

If not explain why? _____

RECEIVED
MAR 23 2005
KCC WICHITA

Plugging of this Well will be done in accordance with K.S.A. 55-101 et. seq. and the Rules and Regulations of the State Corporation Commission.

List Name of Company Representative authorized to be in charge of plugging operations: Dick Lynn
Marlin Oil Corp. Phone: (405) 818 - 8738
 Address: PO Box 14630 City / State: Oklahoma City, OK. 73113
 Plugging Contractor: Sargent and Horton Plugging, INC. KCC License #: 31151
(Company Name) (Contractor's)
 Address: Route 1, Box 49BA, Tyrone, OK 73951 Phone: (580) 854 - 6515

1/06

Proposed Date and Hour of Plugging (if known?): _____

Payment of the Plugging Fee (K.A.R. 82-3-118) will be guaranteed by Operator or Agent

Date: 3/21/05 Authorized Operator / Agent: _____
(Signature)

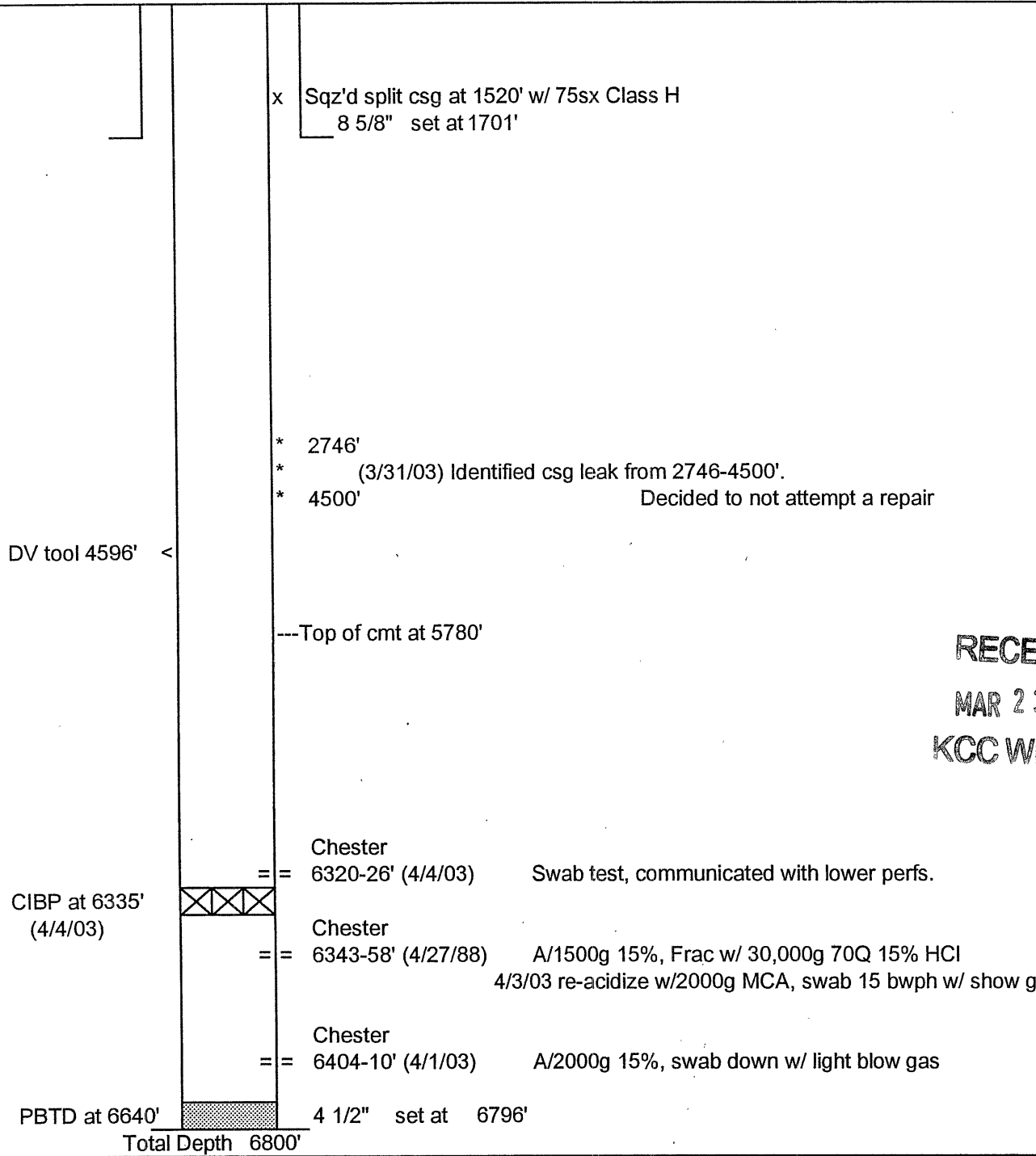
Mail to: KCC - Conservation Division, 130 S. Market - Room 2078, Wichita, Kansas 67202

WELL DATA SHEETS

Date: May 14, 2003

Well Name Boles No. 3-16

WELLBORE SCHEMATIC



RECEIVED
MAR 23 2005
KCC WICHITA

Well Site Equipment		Brief Well History	
Tanks (oil)	Wellhead only, no other surface equipment.	8/29/88	Initial gas sales, SIP 1400psi, 618 mcf/d
Tanks (sw)		6/1/91	Tidemark to Comstock Oil&Gas
Prod Unit		????	Comstock Oil&Gas to Chesapeake
Separator		9/22/01	Pull pkr, swab well, and install plunger lift.
H. Treater		April, 03	Identify csg leak, test Chester at 6404' and 6320'
Pmp Unit			
Prime Mover			
Plunger Lift			
Other			

-Page marked-

RECEIVED
MAY 09 1993
KANSAS DIVISION OF SURVEY AND
OTHER SERVICES
OSM1/SOL
HL

DUAL INDUCTION
SHORT GUARD
LOG

MARLIN OIL CORP
GEOLOGICAL LOG FILE

Wyleplex

COMPANY TIBBERK EXPLORATION, INC.
WELL BOLES NO. 570
FIELD MIDCHAMPE
COUNTY SEAROCK
LOCATION C 5th NW
2551 P.S. - 4690 FEL
SEC. 18 T. 35 S. R. 6E ELEV. 2988 34 H
ELEV. 2988 34 H
RPT NO. 15-175-21-005
DATE 04/08/88
LOGGED BY
CHECKED BY
DATE 04/08/88

PERMITS: DNR 011, 012, 013, 014, 015, 016, 017, 018, 019, 020, 021, 022, 023, 024, 025, 026, 027, 028, 029, 030, 031, 032, 033, 034, 035, 036, 037, 038, 039, 040, 041, 042, 043, 044, 045, 046, 047, 048, 049, 050, 051, 052, 053, 054, 055, 056, 057, 058, 059, 060, 061, 062, 063, 064, 065, 066, 067, 068, 069, 070, 071, 072, 073, 074, 075, 076, 077, 078, 079, 080, 081, 082, 083, 084, 085, 086, 087, 088, 089, 090, 091, 092, 093, 094, 095, 096, 097, 098, 099, 100, 101, 102, 103, 104, 105, 106, 107, 108, 109, 110, 111, 112, 113, 114, 115, 116, 117, 118, 119, 120, 121, 122, 123, 124, 125, 126, 127, 128, 129, 130, 131, 132, 133, 134, 135, 136, 137, 138, 139, 140, 141, 142, 143, 144, 145, 146, 147, 148, 149, 150, 151, 152, 153, 154, 155, 156, 157, 158, 159, 160, 161, 162, 163, 164, 165, 166, 167, 168, 169, 170, 171, 172, 173, 174, 175, 176, 177, 178, 179, 180, 181, 182, 183, 184, 185, 186, 187, 188, 189, 190, 191, 192, 193, 194, 195, 196, 197, 198, 199, 200, 201, 202, 203, 204, 205, 206, 207, 208, 209, 210, 211, 212, 213, 214, 215, 216, 217, 218, 219, 220, 221, 222, 223, 224, 225, 226, 227, 228, 229, 230, 231, 232, 233, 234, 235, 236, 237, 238, 239, 240, 241, 242, 243, 244, 245, 246, 247, 248, 249, 250, 251, 252, 253, 254, 255, 256, 257, 258, 259, 260, 261, 262, 263, 264, 265, 266, 267, 268, 269, 270, 271, 272, 273, 274, 275, 276, 277, 278, 279, 280, 281, 282, 283, 284, 285, 286, 287, 288, 289, 290, 291, 292, 293, 294, 295, 296, 297, 298, 299, 300, 301, 302, 303, 304, 305, 306, 307, 308, 309, 310, 311, 312, 313, 314, 315, 316, 317, 318, 319, 320, 321, 322, 323, 324, 325, 326, 327, 328, 329, 330, 331, 332, 333, 334, 335, 336, 337, 338, 339, 340, 341, 342, 343, 344, 345, 346, 347, 348, 349, 350, 351, 352, 353, 354, 355, 356, 357, 358, 359, 360, 361, 362, 363, 364, 365, 366, 367, 368, 369, 370, 371, 372, 373, 374, 375, 376, 377, 378, 379, 380, 381, 382, 383, 384, 385, 386, 387, 388, 389, 390, 391, 392, 393, 394, 395, 396, 397, 398, 399, 400, 401, 402, 403, 404, 405, 406, 407, 408, 409, 410, 411, 412, 413, 414, 415, 416, 417, 418, 419, 420, 421, 422, 423, 424, 425, 426, 427, 428, 429, 430, 431, 432, 433, 434, 435, 436, 437, 438, 439, 440, 441, 442, 443, 444, 445, 446, 447, 448, 449, 450, 451, 452, 453, 454, 455, 456, 457, 458, 459, 460, 461, 462, 463, 464, 465, 466, 467, 468, 469, 470, 471, 472, 473, 474, 475, 476, 477, 478, 479, 480, 481, 482, 483, 484, 485, 486, 487, 488, 489, 490, 491, 492, 493, 494, 495, 496, 497, 498, 499, 500, 501, 502, 503, 504, 505, 506, 507, 508, 509, 510, 511, 512, 513, 514, 515, 516, 517, 518, 519, 520, 521, 522, 523, 524, 525, 526, 527, 528, 529, 530, 531, 532, 533, 534, 535, 536, 537, 538, 539, 540, 541, 542, 543, 544, 545, 546, 547, 548, 549, 550, 551, 552, 553, 554, 555, 556, 557, 558, 559, 560, 561, 562, 563, 564, 565, 566, 567, 568, 569, 570, 571, 572, 573, 574, 575, 576, 577, 578, 579, 580, 581, 582, 583, 584, 585, 586, 587, 588, 589, 590, 591, 592, 593, 594, 595, 596, 597, 598, 599, 600, 601, 602, 603, 604, 605, 606, 607, 608, 609, 610, 611, 612, 613, 614, 615, 616, 617, 618, 619, 620, 621, 622, 623, 624, 625, 626, 627, 628, 629, 630, 631, 632, 633, 634, 635, 636, 637, 638, 639, 640, 641, 642, 643, 644, 645, 646, 647, 648, 649, 650, 651, 652, 653, 654, 655, 656, 657, 658, 659, 660, 661, 662, 663, 664, 665, 666, 667, 668, 669, 670, 671, 672, 673, 674, 675, 676, 677, 678, 679, 680, 681, 682, 683, 684, 685, 686, 687, 688, 689, 690, 691, 692, 693, 694, 695, 696, 697, 698, 699, 700, 701, 702, 703, 704, 705, 706, 707, 708, 709, 710, 711, 712, 713, 714, 715, 716, 717, 718, 719, 720, 721, 722, 723, 724, 725, 726, 727, 728, 729, 730, 731, 732, 733, 734, 735, 736, 737, 738, 739, 740, 741, 742, 743, 744, 745, 746, 747, 748, 749, 750, 751, 752, 753, 754, 755, 756, 757, 758, 759, 760, 761, 762, 763, 764, 765, 766, 767, 768, 769, 770, 771, 772, 773, 774, 775, 776, 777, 778, 779, 780, 781, 782, 783, 784, 785, 786, 787, 788, 789, 790, 791, 792, 793, 794, 795, 796, 797, 798, 799, 800, 801, 802, 803, 804, 805, 806, 807, 808, 809, 810, 811, 812, 813, 814, 815, 816, 817, 818, 819, 820, 821, 822, 823, 824, 825, 826, 827, 828, 829, 830, 831, 832, 833, 834, 835, 836, 837, 838, 839, 840, 841, 842, 843, 844, 845, 846, 847, 848, 849, 850, 851, 852, 853, 854, 855, 856, 857, 858, 859, 860, 861, 862, 863, 864, 865, 866, 867, 868, 869, 870, 871, 872, 873, 874, 875, 876, 877, 878, 879, 880, 881, 882, 883, 884, 885, 886, 887, 888, 889, 890, 891, 892, 893, 894, 895, 896, 897, 898, 899, 900, 901, 902, 903, 904, 905, 906, 907, 908, 909, 910, 911, 912, 913, 914, 915, 916, 917, 918, 919, 920, 921, 922, 923, 924, 925, 926, 927, 928, 929, 930, 931, 932, 933, 934, 935, 936, 937, 938, 939, 940, 941, 942, 943, 944, 945, 946, 947, 948, 949, 950, 951, 952, 953, 954, 955, 956, 957, 958, 959, 960, 961, 962, 963, 964, 965, 966, 967, 968, 969, 970, 971, 972, 973, 974, 975, 976, 977, 978, 979, 980, 981, 982, 983, 984, 985, 986, 987, 988, 989, 990, 991, 992, 993, 994, 995, 996, 997, 998, 999, 1000

Fold Here

Service Ticket No.: 333751 API Serial No.: 15-175-21-005 PGM Version: 1.18

Change in Mud Type or Additional Samples RESISTIVITY SCALE CHANGES

Date/Sample No.	Type Log	Depth	Scale Up Hole	Scale Down
	DIGL			NO CHANGES

Type Fluid in Hole

Dens. of Visc. 1 1

pH. of Fluid Loss 1 1

Source of Sample

Rm of Meas. Temp. 1 1

Rmf of Meas. Temp. 1 1

Rnc of Meas. Temp. 1 1

Source: Rmf/Rmc 1 1

Rm of BHT 0.93 0.140 1 1

Rmf of BHT 0.78 0.140 1 1

Rnc of BHT 1.09 0.140 1 1

EQUIPMENT DATA

GAMMA		ACOUSTIC		DENSITY		NEUTRON	
Run No.	ONE	Run No.		Run No.	ONE	Run No.	ONE
Serial No.	108564	Serial No.		Serial No.	Z1	Serial No.	108785
Model No.	NGRT-R	Model No.		Model No.	SDLT-R	Model No.	DSNT-R
Diameter	3.625"	No. of Cent.		Diameter	4.5"	Diameter	3.625"
Detector Model No.	102A-T	Spacing		Log Type	G-C	Log Type	N-N
Type	SCINT			Source Type	CS	Source Type	AN BE
Length	"	LSR		Serial No.	SDL-858	Serial No.	DSNT-351
Distance To Source	N/A	FMDR		Strength	1.5 CI	Strength	18.5 CI

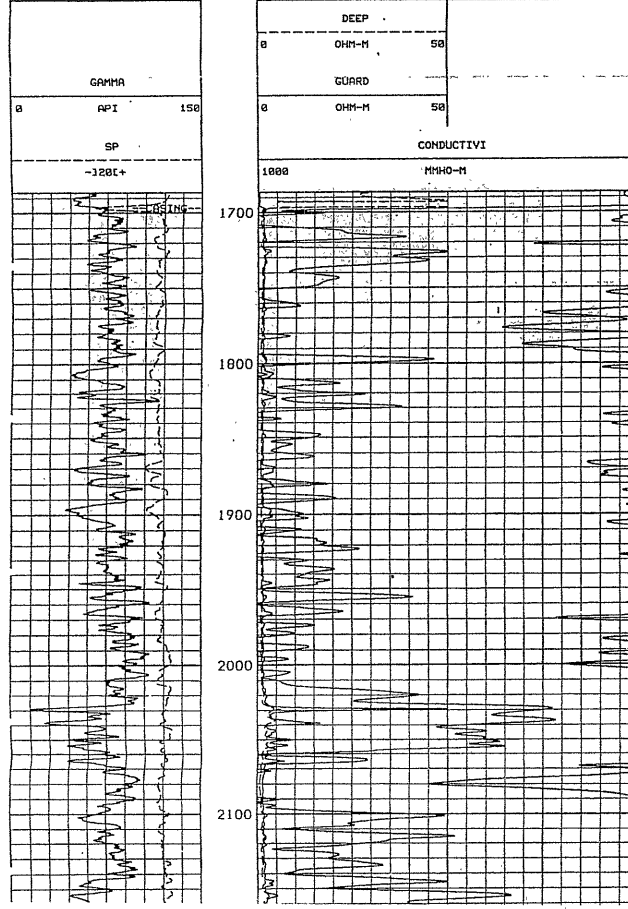
LOGGING DATA

GENERAL		GAMMA		ACOUSTIC		DENSITY		NEUTRON					
Run No.	Depth	Speed	Scale	Scale	Scale	L	R	L	R				
ONE	6600	1696	90	0	150			2.0	3.0	2.71	.30	-1.16	LS

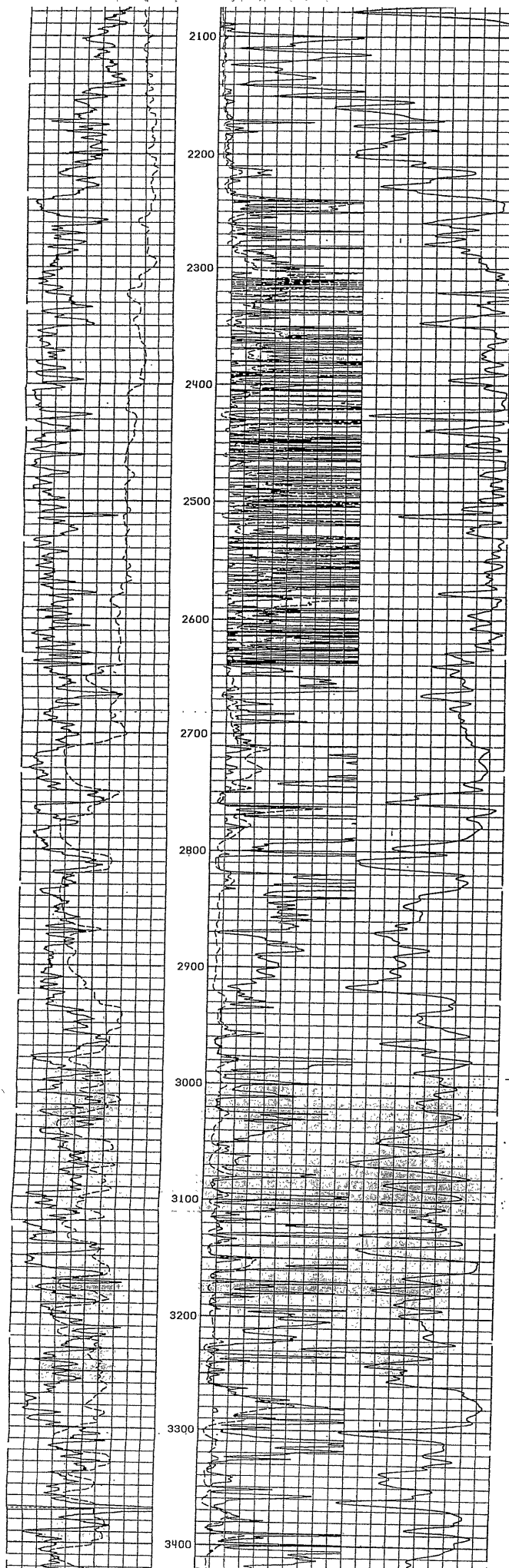
Remarks: YOUR CREW TODAY: MR. REDMAN MR. LEON

CHLORIDES: 2880

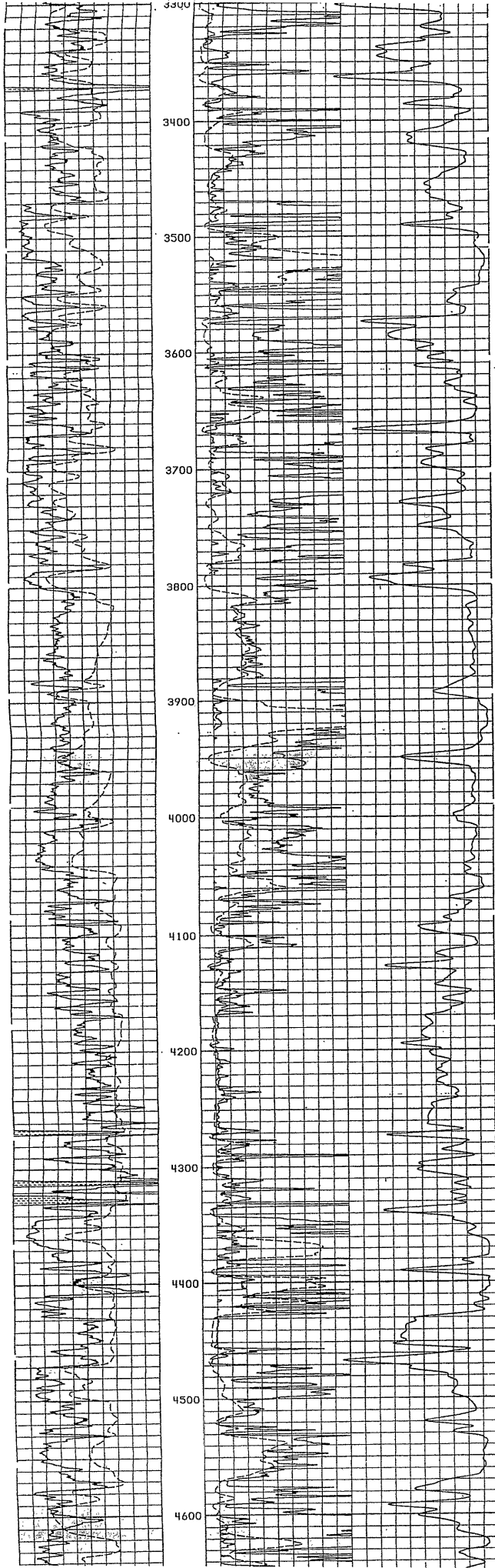
LIBERAL DISTRICT: 316-624-8123 THANK YOU



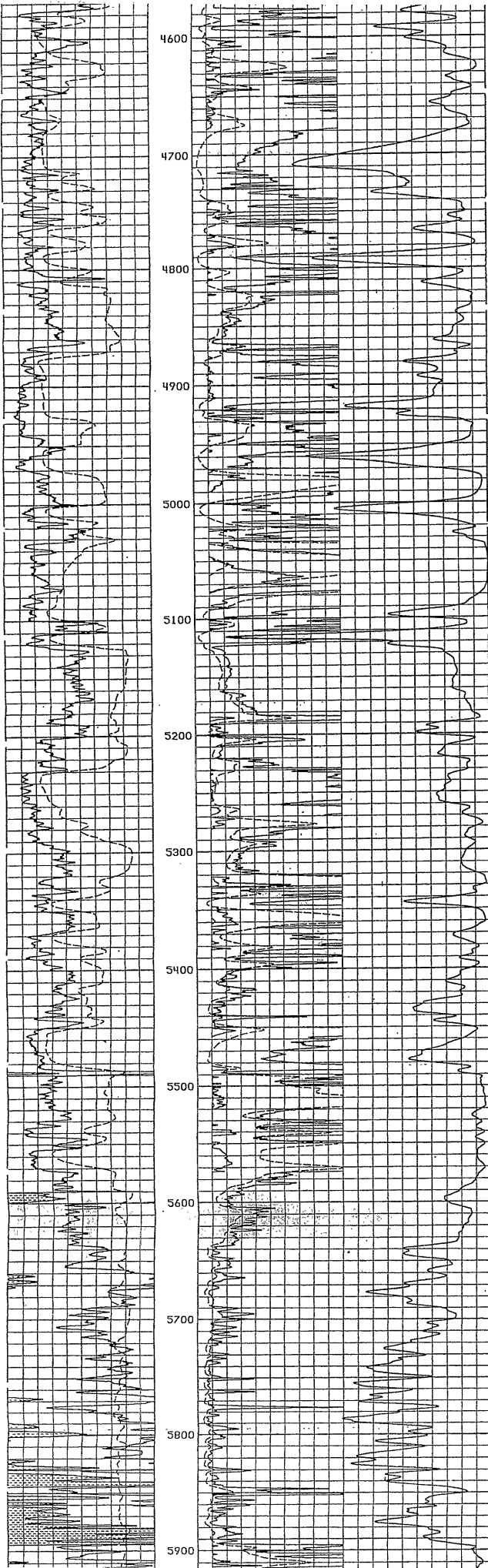
RECEIVED
MAR 23 2005
KCC WICHITA



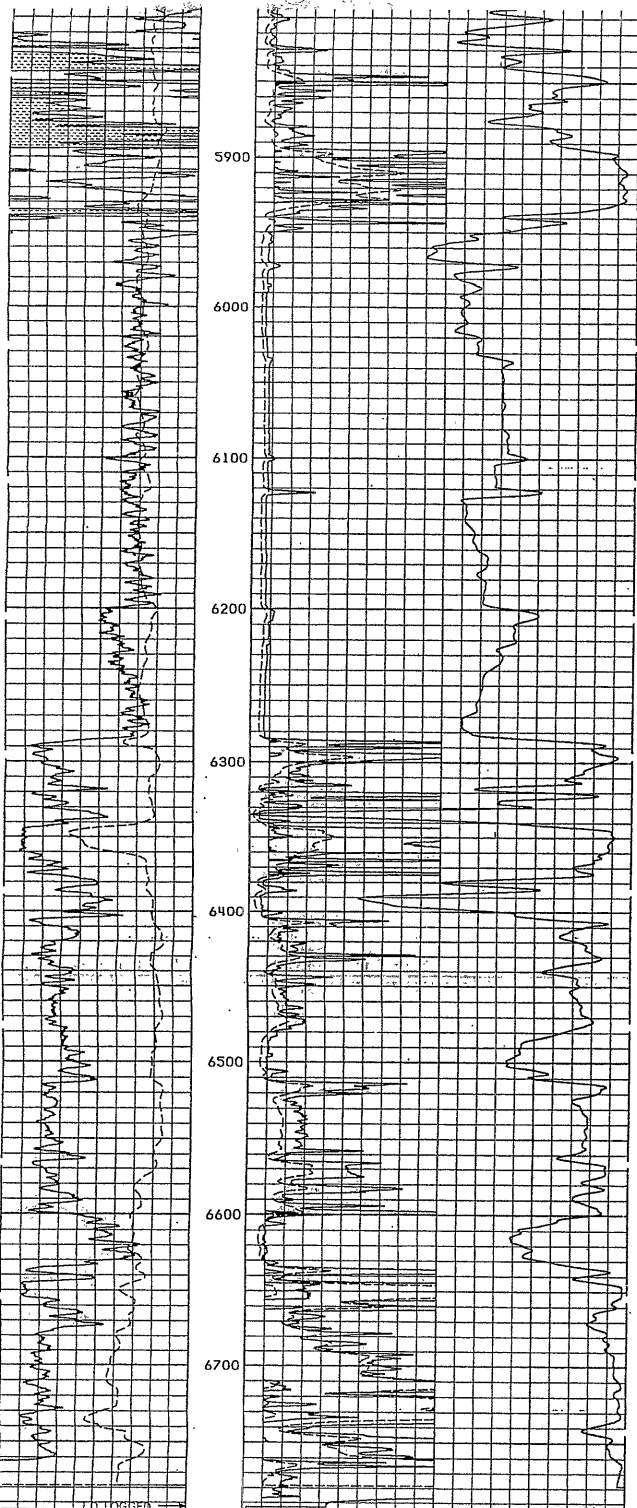
RECEIVED
MAR 23 2005
KCC WICHITA



RECEIVED
MAR 23 2005
KCC WICHITA



RECEIVED
MAR 23 2005
KCC WICHITA



GRMRA	
0	API 150
SP	
-120C+	

DEEP	
0	OHM-M 50
GUARD	
0	OHM-M 50
CONDUCTIVITY	
1000	MMHO-M

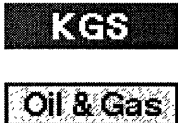
SECTION # 2 Date: 4/ 8/88 Time: 5:17 Version:1.10

RXG/RT	
GRMRA	
0	API 150
SP	
-120C+	

TENSION	
10000 POUNDS	
DEEP	
.2	OHM-M 2000
MEDIUM	
.2	OHM-M 2000
GUARD	
.2	OHM-M 2000

RECEIVED
MAR 23 2005
KCC WICHITA

CASING-
1700



Specific Well--15-175-21005

Tops Picked

This page shows the tops picked for the well you have selected.

Formation (source name)	Top	Base	Source	Updated
Wellington Formation (WLNVTN)	2236		HUG EL-KN-B	Jul-01-2003
Hollenberg Limestone Member (HLLNBR)	2650		HUG EL-KN-B	Jul-01-2003
Chase Group (CHSE GRP)	2676		HUG EL-KN-B	Jul-01-2003
Herington Limestone Member (HRNGTN)	2676		HUG EL-KN-B	Jul-01-2003
Krider Limestone Member (KRIDER)	2712		HUG EL-KN-B	Jul-01-2003
Odell Shale Formation (ODELL)	2750		HUG EL-KN-B	Jul-01-2003
Winfield Limestone Formation (WINF)	2761		HUG EL-KN-B	Jul-01-2003
Gage Shale Member (GAGE)	2806		HUG EL-KN-B	Jul-01-2003
Towanda Limestone Member (TWND)	2817	2869	HUG EL-KN-B	Jul-01-2003
Fort Riley Limestone Member (FTRLY)	2872	2914	HUG EL-KN-B	Jul-01-2003
Florence Limestone Member (FLRNC)	2914		HUG EL-KN-B	Jul-01-2003
Matfield Shale Formation (MATFIELD)	2959		HUG EL-KN-B	Jul-01-2003
Wreford Limestone Formation (WREFORD)	2975		HUG EL-KN-B	Jul-01-2003
Speiser Shale Formation (A1 SH)	3012		HUG EL-KN-B	Jul-01-2003
Council Grove Group (CGRV GRP)	3012		HUG EL-KN-B	Jul-01-2003
Funston Formation (A1 LM)	3024		HUG EL-KN-B	Jul-01-2003
Blue Rapids Shale Formation (B1 SH)	3090		HUG EL-KN-B	Jul-01-2003
Crouse Limestone Formation (B1 LM)	3094		HUG EL-KN-B	Jul-01-2003
Easley Creek Shale Formation (B2 SH)	3110		HUG EL-KN-B	Jul-01-2003
Middleburg Limestone Member				

RECEIVED
MAR 23 2005
KCC WICHITA

(B2 LM)	3120		HUG EL-KN-B	Jul-01-2003
Hooser Shale Member (B3 SH)	3139		HUG EL-KN-B	Jul-01-2003
Eiss Limestone Member (B3 LM)	3148		HUG EL-KN-B	Jul-01-2003
Stearns Shale Formation (B4 SH)	3162		HUG EL-KN-B	Jul-01-2003
Morrill Limestone Member (B4 LM)	3168		HUG EL-KN-B	Jul-01-2003
Florena Shale Member (B5 SH)	3183		HUG EL-KN-B	Jul-01-2003
Cottonwood Limestone Member (B5 LM)	3191		HUG EL-KN-B	Jul-01-2003
Eskridge Shale Formation (C SH)	3210		HUG EL-KN-B	Jul-01-2003
Neva Limestone Member (C LM)	3270		HUG EL-KN-B	Jul-01-2003
Roca Shale Formation (D SH)	3329		HUG EL-KN-B	Jul-01-2003
Howe Limestone Member (D LM)	3351		HUG EL-KN-B	Jul-01-2003
Johnson Shale Formation (E SH)	3369		HUG EL-KN-B	Jul-01-2003
Long Creek Limestone Member (E LM)	3388		HUG EL-KN-B	Jul-01-2003
Wabaunsee Group (WBNS GRP)	3469		HUG EL-KN-B	Jul-01-2003
Wabaunsee Group (WBNS U)	3469		HUG EL-KN-B	Jul-01-2003
Wabaunsee Group (2WBNS)	3547		HUG EL-KN-B	Jul-01-2003
Root Shale Formation (ROOT SH)	3667		HUG EL-KN-B	Jul-01-2003
Stotler Limestone Formation (STOTLER)	3667		HUG EL-KN-B	Jul-01-2003
Shawnee Group (SHWN GRP)	3889		HUG EL-KN-B	Jul-01-2003
Topeka Limestone Formation (TPKA)	3889		HUG EL-KN-B	Jul-01-2003
Heebner Shale Member (HBNR SH)	4321		HUG EL-KN-B	Jul-01-2003
Toronto Limestone Member (TRNT)	4341		HUG EL-KN-B	Jul-01-2003
Iatan Limestone Member (F/LNSG)	4406		HUG EL-KN-B	Jul-01-2003
Lansing Group				

RECEIVED
MAR 23 2005
KCC WICHITA

(LANS GRP)	4467		HUG EL-KN-B	Jul-01-2003
Iola Limestone Formation (IOLA)	4712		HUG EL-KN-B	Jul-01-2003
Muncie Creek Shale Member (MNCRK)	4754		HUG EL-KN-B	Jul-01-2003
DRUM (DRUM)	4762		HUG EL-KN-B	Jul-01-2003
Stark Shale Member (STRK SH)	5029		HUG EL-KN-B	Jul-01-2003
Swope Limestone Formation (SWOPE)	5033		HUG EL-KN-B	Jul-01-2003
Mound City Shale Member (3D HSHALE)	5122		HUG EL-KN-B	Jul-01-2003
Marmaton Group (MRMNT GRP)	5229		HUG EL-KN-B	Jul-01-2003
Altamont Limestone Formation (MRM B)	5279		HUG EL-KN-B	Jul-01-2003
Pawnee Limestone Formation (MRM C)	5321		HUG EL-KN-B	Jul-01-2003
Fort Scott Limestone Formation (D MRMN)	5367		HUG EL-KN-B	Jul-01-2003
Little Osage Shale Member (LOSG)	5486		HUG EL-KN-B	Jul-01-2003
Cherokee Group (CHRK GRP)	5590		HUG EL-KN-B	Jul-01-2003
Excello Shale Member (EXCELLO)	5590		HUG EL-KN-B	Jul-01-2003
Atokan Stage (ATKN GRP)	5845		HUG EL-KN-B	Jul-01-2003
Atoka Shale Bed (ATOKA SH)	5853		HUG EL-KN-B	Jul-01-2003
Middle Morrowan Limestone Bed (B-P/LM)	5936		ELOG-BO	Sep-06-2000
Middle Morrowan Limestone Bed (B-P/LM)	5950		HUG EL-KN-B	Jul-01-2003
Upper Kearny Member (MRRW GRP)	5950		HUG EL-KN-B	Jul-01-2003
Chesteran Stage (CHST GRP)	6284		ELOG-BO	Sep-06-2000
Chesteran Zone D Bed (CHST DZN)	6284		ELOG-BO	Sep-06-2000
Mississippian System (MISS SYS)	6284		ELOG-BO	Sep-06-2000
Middle Morrowan Limestone Bed (M MRW LM)	6285		HUG EL-KN-B	Jul-01-2003
Chesteran Zone C Bed				

RECEIVED
MAR 23 2005
KCC WICHITA

(CHST CZN)	6285	6404	HUG EL-KN-B	Jul-01-2003
Mississippian System (MISS SYS)	6285		HUG EL-KN-B	Jul-01-2003
Chesteran Zone B Bed (CHST BZN)	6404	6513	HUG EL-KN-B	Jul-01-2003
Chesteran Zone A Bed (CHST AZN)	6513	6674	HUG EL-KN-B	Jul-01-2003
Chesteran Zone B Bed (CHST SDL B)	6565		ELOG-BO	Sep-06-2000
Ste. Genevieve Limestone Formation (WSTGN)	6644		HUG EL-KN-B	Jul-01-2003
Meramecian Stage (MRMC)	6674		HUG EL-KN-B	Jul-01-2003
Ste. Genevieve Limestone Formation (STGN)	6674		HUG EL-KN-B	Jul-01-2003
Chesteran Zone A Bed (CHST LM)			HUG EL-KN-B	Jul-01-2003

[Back to main well page...](#)

[Kansas Geological Survey, Oil and Gas Well Database](#)

Comments to webadmin@kgs.ku.edu

URL=<http://www.kgs.ku.edu/Magellan/Qualified/index.html>

Well Display Programs Updated Aug. 2003. Data added continuously.

RECEIVED
MAR 23 2005
KCC WICHITA

KANSAS

CORPORATION COMMISSION

Kathleen Sebelius, Governor Brian J. Moline, Chair Robert E. Krehbiel, Commissioner Michael C. Moffet, Commissioner

NOTICE OF RECEIPT OF WELL PLUGGING APPLICATION (CP-1)

Marlin Oil Corporation
PO Box 14630
Oklahoma City, OK 73113-0630

March 24, 2005

Re: BOLES #3-16
API 15-175-21005-00-00
NWNWSW 16-35S-34W, 2551 FSL 4690 FEL
SEWARD COUNTY, KANSAS

Dear Operator:

This letter is to notify you that the Conservation Division is in receipt of your plugging proposal, form CP-1, for the above-captioned well.

Your CP-1 has been reviewed by the Conservation Division central office for completeness and to verify license numbers. The plugging proposal will now be forwarded to the district office listed below for review of your proposed method of plugging.

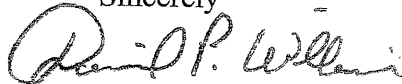
Please contact the district office for approval of your proposed plugging method at least five (5) days before plugging the well, pursuant to K.A.R. 82-3-113 (b). If a workover pit will be used during the plugging of the well it must be permitted. A CDP-1 form must be filed and approved prior to the use of the pit.

The Conservation Division's review of form CP-1, either in the central or district office, does not include an inquiry into well ownership or the filing operator's legal right to plug the well.

This notice in no way constitutes authorization to plug the above-captioned well by persons not having legal rights of ownership or interest in the well. This notice is void after ninety (90) days from the above date.

District: #1
210 E Frontview, Suite A
Dodge City, KS 67801
(620) 225-8888

Sincerely



David P. Williams
Production Supervisor