

ORIGINAL

CONFIDENTIAL ORIGINAL

RELEASED

8-21-91

AUG 21 1991

SIDE ONE

STATE CORPORATION COMMISSION OF KANSAS  
OIL & GAS CONSERVATION DIVISION  
WELL COMPLETION FORM  
ACO-1 WELL HISTORY  
DESCRIPTION OF WELL AND LEASE

Operator: License # 6889

Name: Oxford Exploration Company

Address P.O. Box 37390

City/State/Zip Denver, CO 80237

Purchaser: Clear Creek, Inc.

Operator Contact Person: David E. Park, Jr.

Phone ( 303 ) 741-2888

Contractor: Name: Murfin Drilling Company

License: 6033

Wellsite Geologist: Roger Welty

Designate Type of Completion

New Well  Re-Entry  Workover

Oil  SWD  Temp. Abd.

Gas  Inj  Delayed Comp.

Dry  Other (Core, Water Supply, etc.)

If **OWMO**: old well info as follows:

Operator: \_\_\_\_\_

Well Name: \_\_\_\_\_

Comp. Date \_\_\_\_\_ Old Total Depth \_\_\_\_\_

Drilling Method:

Mud Rotary  Air Rotary  Cable

04-05-90 04-11-90 06-12-90

Spud Date Date Reached TD Completion Date

API NO. 15- 065-22,562-00-00

County Graham FROM CONFIDENTIAL

NE SE  Sec. 9 Twp. 6S Rge. 22  East West

1880  Ft. North from Southeast Corner of Section

660  Ft. West from Southeast Corner of Section  
(NOTE: Locate well in section plat below.)

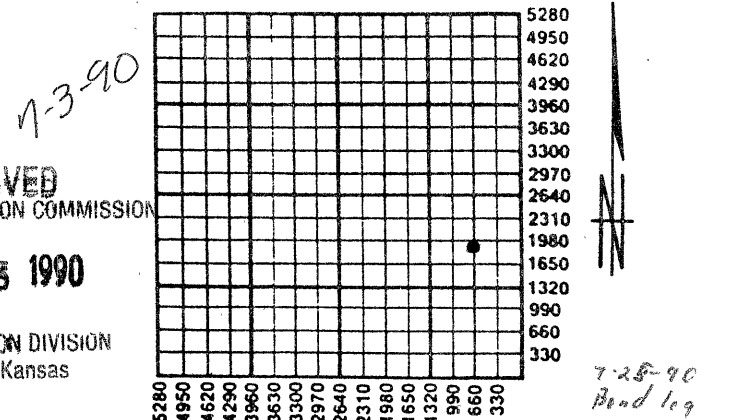
Lease Name Mary Rush  Well # 9-9

Field Name Springbird

Producing Formation Lansing- Kansas City

Elevation: Ground 2268' KB 2273'

Total Depth 3900' PBDT 3816'



Amount of Surface Pipe Set and Cemented at 208 Feet

Multiple Stage Cementing Collar Used?  Yes  No

If yes, show depth set 1922 Feet

If Alternate II completion, cement circulated from 1922

feet depth to 470/100 w/ 280 sx cent.

RECEIVED  
STATE CORPORATION COMMISSION  
JUL 5 1990  
CONSERVATION DIVISION  
Wichita, Kansas

**INSTRUCTIONS:** This form shall be completed in triplicate and filed with the Kansas Corporation Commission, 200 Colorado Derby Building, Wichita, Kansas 67202, within 120 days of the spud date of any well. Rule 82-3-130, 82-3-107 and 82-3-106 apply. Information on side two of this form will be held confidential for a period of 12 months if requested in writing and submitted with the form. See rule 82-3-107 for confidentiality in excess of 12 months. One copy of all wireline logs and drillers time log shall be attached with this form. ALL CEMENTING TICKETS MUST BE ATTACHED. Submit CP 4 form with all plugged wells. Submit CP-111 form with all temporarily abandoned wells. Any recompletion, workover or conversion of a well requires filing of ACO-2 within 120 days from commencement date of such work.

All requirements of the statutes, rules and regulations promulgated to regulate the oil and gas industry have been fully complied with and the statements herein are complete and correct to the best of my knowledge.

Signature \_\_\_\_\_

Title Jack E. Goss Agent for Operator Date 4-20-90

Subscribed and sworn to before me this 20th day of April, 19 90.

Notary Public Melanie Rau

Date Commission Expires 4-18-93

**K.C.C. OFFICE USE ONLY**

Letter of Confidentiality Attached

Wireline Log Received

Drillers Timelog Received

**Distribution**

KCC  SWD/Rep  NGPA

KGS  Plug  Other (Specify)



**SIDE TWO**

Operator Name Oxford Exploration Company Lease Name Mary Rush Well # 9-9  
 Sec. 9 Twp. 6S Rge. 22  East  West  
 County Graham

**RELEASED**

**INSTRUCTIONS:** Show important tops and base of formations penetrated. Detail all cores. Report all drill stem tests giving interval tested, time tool open and closed, flowing and shut-in pressures, whether shut-in pressure reached static level, hydrostatic pressures, bottom hole temperature, fluid recovery, and flow rates if gas to surface during test. Attach extra sheet if more space is needed. Attach copy of log.

Drill Stem Tests Taken  Yes  No  
 (Attach Additional Sheets.)  
 Samples Sent to Geological Survey  Yes  No  
 Cores Taken  Yes  No  
 Electric Log Run  Yes  No  
 (Submit Copy.)

**FROM CONFIDENTIAL**

**Formation Description**

Log  Sample

Name	Top	Bottom
Anhydrite (sample)	1913 (+360)	1942 (+331)
Topeka	3279 (-1006)	
Heebner	3475 (-1202)	
Toronto	3500 (-1227)	
Lansing	3518 (-1245)	
Base Kansas City	3709 (-1436)	
Arbuckle	3800 (-1527)	

**CASING RECORD**  New  Used

Report all strings set-conductor, surface, intermediate, production, etc.

Purpose of String	Size Hole Drilled	Size Casing Set (In O.D.)	Weight Lbs./Ft.	Setting Depth	Type of Cement	# Sacks Used	Type and Percent Additives
Surface	12 1/4"	8-5/8"		208	60/40 Poz	140	2% gel, 3% cc
Production		4-1/2"		3816	60/40 Poz	205	
				DV@1922'	Howco Lite	280	

Shots Per Foot	Specify Footage of Each Interval Perforated	Acid, Fracture, Shot, Cement Squeeze Record	
		(Amount and Kind of Material Used)	Depth
2	3668'-3672'	300 gal. MCA	
		1500 gal. 15%NE	

**TUBING RECORD** Size 2 3/8" Set At 3801' Packer At \_\_\_\_\_ Liner Run  Yes  No

Date of First Production 06-13-90	Producing Method <input type="checkbox"/> Flowing <input checked="" type="checkbox"/> Pumping <input type="checkbox"/> Gas Lift <input type="checkbox"/> Other (Explain)					
Estimated Production Per 24 Hours	Oil Bbls. 35	Gas Mcf tstm	Water Bbls. 0	Gas-Oil Ratio --	Gravity 40	

Disposition of Gas:  Vented  Sold  Used on Lease (If vented, submit ACO-18.)

**METHOD OF COMPLETION**

Open Hole  Perforation  Dually Completed  Commingled  
 Other (Specify) \_\_\_\_\_

Production Interval 3668-72'

CONFIDENTIAL

ORIGINAL

RELEASED

AUG 21 1991

8-21-91

FROM CONFIDENTIAL

DST RESULTS

Mary Rush #9-9  
Graham County, Kansas

DST #1: 3474'-3535'

30-60-45-90  
HP 1953,1889  
IF 74-116  
ISIP 840 (static)  
FF 180-254  
FSIP 840 (static)  
BHT 109

Rec. 30' MSW w/ scum oil, 240' saltwater

DST #2: 3651'-3684'

30-60-45-90  
HP 1858,1858  
IF 42-52  
ISIP 74 (static)  
FF 52-63  
FSIP 74 (static)  
BHT 109

Rec. 40' free oil, 40' OCM

RECEIVED  
STATE CORPORATION COMMISSION

JUL - 5 1990

CONSERVATION DIVISION  
Wichita, Kansas



**HALLIBURTON SERVICES**  
**JOB LOG**

WELL NO. 9-9 LEASE Mirry Rush TICKET NO. 863381  
 CUSTOMER Onsco Exploration Co. PAGE NO. 1 of 2  
 JOB TYPE D.V. Logging - DATE 4-11-90

FORM 2013 R-2

CHART NO.	TIME	RATE (BPM)	VOLUME (BBL)	PUMPS		PRESSURE (PSI)		DESCRIPTION OF OPERATION AND MATERIALS
				T	C	TUBING	CASING	
	0800							TIME CALLED - READY @ 1300 Hrs
	1245							ONLOC - Rig laying down D.P. Stop equip
	1345							Pipe Layed down. Rig up to Full Csg.
	1455							Start 4 1/2" New 10.5" casing with Insert Float Shoe w/ Auto. 11, Contact 2002 on 10", from bottom of csg, 4 collars 3, 5, 7, 9, 11, 42, 44, 70, 86, Scratches on bottom 1/2 of joint #2, Top 1/2 of joint #3 + bottom 1/2 of joint #7. Cmt Baskets on Jts #5, 42, 70 D.V tool @ 1932.42 on jt #44.
	1640							Csg on bottom Hook up P.C + manifold to circ
	1650							Circ hole w/ mud pump + reciprocate. Finish circ Hook to P.T.
	1723	6	5		1		100	Run 5 BBL wire spacer - Reciprocate pipe
			18		1		100	" 18 BBL 2% SALT H2O "
			5		1		100	" 5 BBL wire spacer "
			12		1		100	" 500 gallon Superflush "
		6	5		1		100	" 5 BBL water spacer "
					1		100	START 2055 60% 40% 2% salt, 18% SALT, 75% RECIPRO-3/4" <sup>Drain</sup>
	1745		46.7		1		200	Finish mix. Reciprocate pipe
	1745							Washout pump & hook + RELEASE plug
	1750	6			1		100	Start disp - 30 BBL H2O - 30 BBL mud. 42 BBL w/ caught D.V. - Finish from 2000 hrs.
	1800	7	60		1		700	Finish disp
	1803							Release hold
	1805							DROP opening plug
	1830							Open D.V. + circ
	1900							Finish circ
								Hook to P.T.
	1902	7			1		100	Start mixing 1300s HDL 1/4" Flare + 1500s HLL 1/4" Flare
	1928	7	136		1		200	Finish mixing amt - 1 BBL Behrment (wire)
	1930	6						RELEASE plug - START Disp
								"CONT"

ORIGINAL

RECEIVED  
STATE CORPORATION COMMISSION  
JUL 25 1990  
CONSERVATION DIVISION  
Wichita, Kansas

RETAIN

