

CARD MUST BE TYPED

State of Kansas

CARD MUST BE SIGNED

NOTICE OF INTENTION TO DRILL

(see rules on reverse side)

Expected Spud Date..... 12..... 10..... 87.....
month day year

API Number 15— 065-22, 427-00-00

OPERATOR: License #..... 7448.....
Name..... Burch Exploration Inc.....
Address..... 11225 Edinborough Way.....
City/State/Zip..... Parker, Colo..... 80134.....
Contact Person..... David Burch.....
Phone..... 303-841-9417.....

NW. NW. SE. Sec... 31. Twp.. 6... S, Rg.. 23.... East
..... 2310..... Ft. from South Line of Section
..... 2310..... Ft. from East Line of Section

(Note: Locate well on Section Plat on reverse side)

CONTRACTOR: License #..... 8682.....
Name..... Golden Eagle Drilling Inc.....
City/State..... McCook, Ne..... 69001.....

Nearest lease or unit boundary line ... 330..... feet
County..... Graham.....
Lease Name..... Worcestor..... Well #..... 1.....

Well Drilled For: Well Class: Type Equipment:
 Oil Storage Infield Mud Rotary
 Gas Inj Pool Ext. Air Rotary
 OWWO Expl Wildcat Cable

Ground surface elevation 2521..... feet MSL
Domestic well within 330 feet: yes no
Municipal well within one mile: yes no

If OWWO: old well info as follows:
Operator.....
Well Name.....
Comp Date..... Old Total Depth.....

Depth to bottom of fresh water..... 200.....
Depth to bottom of usable water 250-1400.....
Surface pipe by Alternate: 1 2

I certify that well will comply with K.S.A. 55-101, et seq., plus eventually plugging hole to KCC specifications.
Date 11-20-87 Signature of Operator or Agent *David Burch* Title *agent*

For KCC Use:
Conductor Pipe Required feet; Minimum Surface Pipe Required 250 feet per Alt. 2
This Authorization Expires 5-23-88 Approved By *RBH* 11-23-87

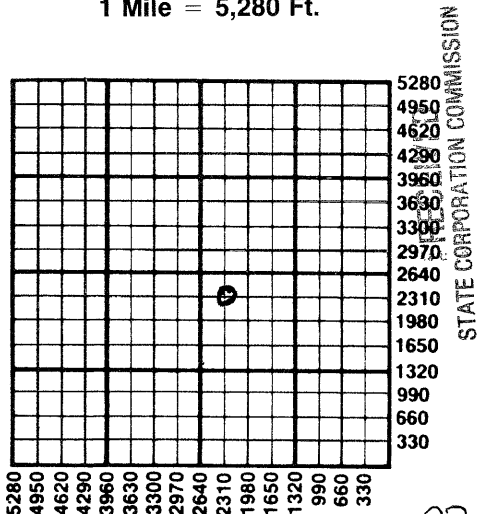
EFFECTIVE DATE: 11-28-87

Must be filed with the K.C.C. five (5) days prior to commencing well
 This card void if drilling not started within six (6) months of date received by K.C.C.

Important procedures to follow:

1. Notify District office before setting surface casing.
2. Set surface casing by circulating cement to the top.
3. File completion forms ACO-1 with K.C.C. within 120 days of well spud date, following instructions on ACO-1, side 1, and including copies of wireline logs.
4. Notify District office 48 hours prior to old well workover or re-entry. Prior to filing Intent, prepare a proposed plugging plan in case well is D & A, then obtain approval of plan when calling district office prior to setting surface pipe.
5. Submit plugging report (CP-4) to K.C.C. after plugging is completed.
6. Obtain an approved injection docket number before disposing of salt water.
7. Notify K.C.C. within 10 days when injection commences or terminates.
8. If an alternate 2 completion, cement in the production pipe from below any usable water to surface within 120 days of spud date.

A Regular Section of Land
1 Mile = 5,280 Ft.



NOV 23 1987

CONSERVATION DIVISION
 Wichita, Kansas

11-23-87

State Corporation Commission of Kansas
 Conservation Division
 200 Colorado Derby Building
 Wichita, Kansas 67202-1212
 (316) 263-3238