

STATE CORPORATION COMMISSION OF KANSAS
OIL & GAS CONSERVATION DIVISION

WELL COMPLETION OR RECOMPLETION FORM
ACO-1 WELL HISTORY

DESCRIPTION OF WELL AND LEASE

Operator: license # 6278
name PETX Petroleum Corporation
address 1616 Glenarm Place, Suite 1700
City/State/Zip Denver, CO 80202

Operator Contact Person Robert E. Johnson
Phone (303) 629-1098

Contractor: license # 6033
name Murfin Drilling Company

Wellsite Geologist Kathryn Rogers
Phone 316-263-6431

PURCHASER

Designate Type of Completion
 New Well Re-Entry Workover

- Oil SWD Temp Abd
- Gas Inj Delayed Comp.
- Dry Other (Core, Water Supply etc.)

If OWWO: old well info as follows:
Operator
Well Name
Comp. Date Old Total Depth

WELL HISTORY

Drilling Method: Mud Rotary Air Rotary Cable
2/8/85 2/14/85 2/15/85
Spud Date Date Reached TD Completion Date

3910
Total Depth PBTD

Amount of Surface Pipe Set and Cemented at 302 feet

Multiple Stage Cementing Collar Used? Yes No

If Yes, Show Depth Set feet

If alternate 2 completion, cement circulated
from 302 feet depth to surface w/ 250 SX cmt

API NO. 15 - 065-22,052 - 0000
County Graham
NE NE SE Sec 34 Twp 6S Rge 22 East West

2310 Ft North from Southeast Corner of Section
330 Ft West from Southeast Corner of Section
(Note: locate well in section plat below)

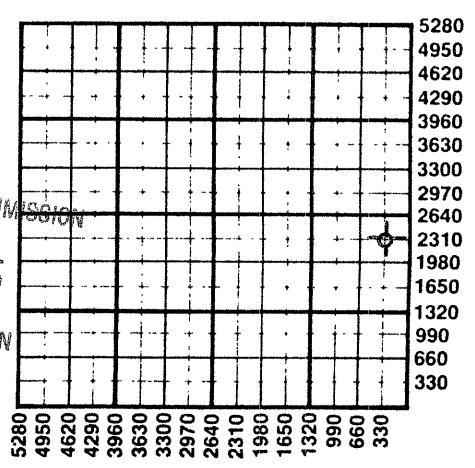
Lease Name Worcester Well# 1

Field Name Wildcat

Producing Formation --

Elevation: Ground 2242 KB 2247

Section Plat



RECEIVED
STATE CORPORATION COMMISSION
MAY 13 1985
CONSERVATION DIVISION
Wichita, Kansas

5-13-85

WATER SUPPLY INFORMATION

Source of Water:

Division of Water Resources Permit #

Groundwater Ft North From Southeast Corner and
(Well) Ft West From Southeast Corner of
Sec Twp Rge East West

Surface Water Ft North From Southeast Corner and
(Stream, Pond etc.) Ft West From Southeast Corner
Sec Twp Rge East West

Other (explain) Murfin hauled from Larry Hill City
Worcester (purchased from city, R.W.D.#)

Disposition of Produced Water: Disposal Repressuring
Docket #

INSTRUCTIONS: This form shall be completed in duplicate and filed with the Kansas Corporation Commission, 200 Colorado Derby Building, Wichita, Kansas 67202, within 90 days after completion or recompletion of any well. Rules 82-3-130 and 82-3-107 apply.

Information on side two of this form will be held confidential for a period of 12 months if requested in writing and submitted with the form. See rule 82-3-107 for confidentiality in excess of 12 months.

One copy of all wireline logs and drillers time log shall be attached with this form. Submit CP-4 form with all plugged wells. Submit CP-111 form with all temporarily abandoned wells.

All requirements of the statutes, rules, and regulations promulgated to regulate the oil and gas industry have been fully complied with and the statements herein are complete and correct to the best of my knowledge.

Signature Robert E. Johnson
Title President Date 5/10/85

Subscribed and sworn to before me this 10th day of May 19 85

Notary Public Laura J. End
Date Commission Expires 7/7/87
7821 McCella Ct.
Westminster, CO 80030
303-427-3901

K.C.C. OFFICE USE ONLY
F Letter of Confidentiality Attached
C Wireline Log Received
C Drillers Timelog Received
Distribution
 KCC SWD/Rep NGPA
 KGS Plug Other (Specify)

Sec. 24 Twp. 6S Rge. 22W

Operator Name PETX Petroleum Corp. Lease Name Worcester Well# 1 SEC. 34 TWP. 6S RGE. 22 East West

WELL LOG

INSTRUCTIONS: Show important tops and base of formations penetrated. Detail all cores. Report all drill stem tests giving interval tested, time tool open and closed, flowing and shut-in pressures, whether shut-in pressure reached static level, hydrostatic pressures, bottom hole temperature, fluid recovery, and flow rates if gas to surface during test. Attach extra sheet if more space is needed. Attach copy of log.

Drill Stem Tests Taken Yes No
 Samples Sent to Geological Survey Yes No
 Cores Taken Yes No

Formation Description
 Log Sample

See attached geologist's report

Name _____ Top _____ Bottom _____
 see attached geologist's report

CASING RECORD <input type="checkbox"/> new <input type="checkbox"/> used Report all strings set - conductor, surface, intermediate, production, etc.							
Purpose of string	size hole drilled	size casing set (in O.D.)	weight lbs/ft.	setting depth	type of cement	# sacks used	type and percent additives
Surface	12 1/4"	8 5/8"	24	302	60/40 poz	250	2%gel, 3%cc

PERFORATION RECORD shots per foot specify footage of each interval perforated	Acid, Fracture, Shot, Cement Squeeze Record (amount and kind of material used) Depth

TUBING RECORD size set at packer at	Liner Run <input type="checkbox"/> Yes <input type="checkbox"/> No

Date of First Production	Producing method <input type="checkbox"/> flowing <input type="checkbox"/> pumping <input type="checkbox"/> gas lift <input type="checkbox"/> Other (explain) _____				
Estimated Production Per 24 Hours	Oil	Gas	Water	Gas-Oil Ratio	Gravity
	Bbls	MCF	Bbls	CFPB	

Disposition of gas: vented sold used on lease

METHOD OF COMPLETION
 open hole perforation other (specify) _____
 Dually Completed. Commingled

PRODUCTION INTERVAL

COMPANY Petx Petroleum Corp

WELL # 1 WORCESTER

SEC. 34 TWP. 6S RGE. 22W

LOCATION NE NE SE

FIELD WILDENT

COUNTY GRAHAM

STATE KANSAS

MCLEOD EXPLOR.

(GEOLOGIST)
205 W 2ND SUITE 18
WICHITA, KS. 67202

ELEVATIONS COMPLETED AS
K.B. 2247 OIL GAS
D.F. DRY X SWDW
G.L. 2242
MEASUREMENTS FROM KB
CASING RECORD B 3/8 @
475

CONTRACTOR MURFIN RIG NO. 2
COMMENCED 2-9-85
COMPLETED 2-14-85
ELECTRICAL LOG GREAT GUNS GR-N-GUARD
MUD MUDCO CHEM
DRILL STEM TESTS 2 tests Western
MUD LOGGING UNIT
CORES ANALYSIS
SAMPLES FROM 3100-TD SUPERVISION FROM 3400-TD
ROTARY TOTAL DEPTH 3910 LOG TOTAL DEPTH 3907
REMARKS Wellsite Geologist - KATHRYN ROGERS.

FORMATION	SAMPLE TOP	ELECTRIC LOG TOP	SUB-SEA DATUM	STRUCTURAL POSITION
Anhydrite		1889	+358	+16
Topeka	3242	3239	-992	NOT AVAILABLE
Heebner	3455	3452	-1205	+6
TORONTO	3481	3478	-1331	+4
LANSING	3499	3497	-1250	+5
Base Kansas City	3689	3684	-1437	+6
2RD ARBUCKLE	3842	3838	-1591	+16
ARBuckle	3858	3852	-1605	+30
Total Depth	3910	3907		

REFERENCE WELL FOR STRUCTURAL POSITION MIDCONTINENT Energy
No 1 Stinemetz - NE NE SW 33-6S-22W

BIT RECORD

NO.	SIZE	MAKE	TYPE	DEPTH OUT	FEET	HOURS
1	12 1/4	ST	D5J	302	302	2 1/2
1	SURFACE	ST	D5J	2675	2373	20 1/4
2	7 1/8	WM	S2F	3910	1235	56 1/4

RECEIVED
STATE CORPORATION COMMISSION
MAY 13 1985
CONSERVATION DIVISION
Wichita, Kansas

DAILY PENETRATION

DATE	DEPTH
2-8-85	moved in
2-9-85	475
2-10-85	2675
2-11-85	3200
2-12-85	3578
2-13-85	3666
2-14-85	3890
TD	3910

DEPTH	LITHOLOGY	DST S	DRILLING TIME MINUTES PER FOOT	SAMPLE DESCRIPTIONS	REMARKS
3100				SH-GRY+RD	
10				SH-GRY+RD	

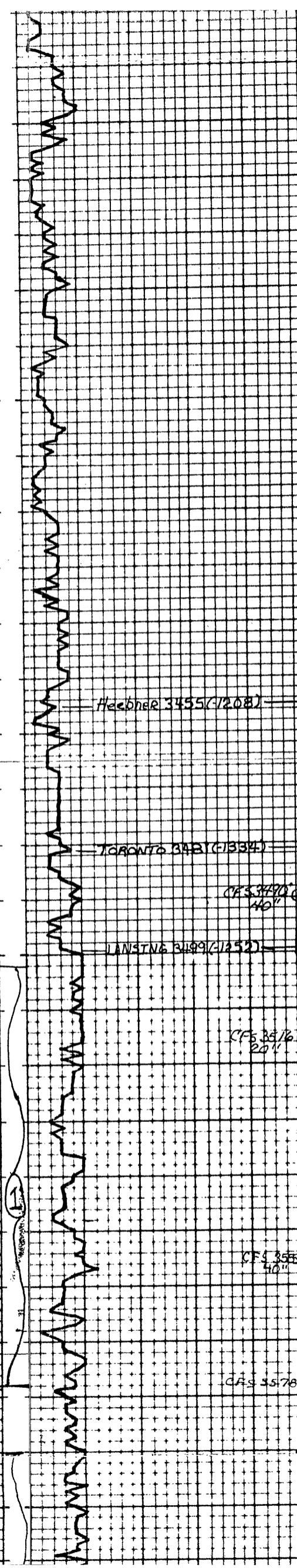
ELEVATION KB 2247

DEPTH	LITHOLOGY	DSTS	DRILLING TIME	SAMPLE DESCRIPTIONS	REMARKS
			MINUTES PER FOOT		
3100				SH-GRY+RD	ELEVATION KB2247
10				SH-GRY+RD	
20				LMSTN-LT GRV-CHKY-SHLY- SH-GRY+RD	
30				LMSTN-LT GRV-FXLN-GD VUG Ø IN PRT-NS-SHLY-SH-GRY+RD	
40				SH-RD+GRV-LMSTN-LT GRV-FXLN	
50				NO SAMPLE	
60					
70				LMSTN-LT GRV-CHKY IN PRT-FXLN- FR XLN Ø-SHLY-SH-RD+GRV	
80				SH-RD+GRV-LMSTN-MD XLN- FXLN Ø-NS	
90				LMSTN-WH-GRV-CALC-CHKY- MD XLN-GD XLN Ø-SH-GRY+ RD	
3200				SH-RD+GRV-LMSTN CRM-CHKY	
10				LMSTN-CRM-WH-FXLN-CHKY- SHLY-SH-GRY+RD	
20					
30				LMSTN-CRM-WH-FXLN-CHKY- SHLY IN PRT-SH-GRV-RD+ GRV	
40				LMSTN-GRV-FXLN-DNSE-PRRY PT Ø-FW PIECES-SH-GRY+RD- TR PYRITE SH-GRY+RD	
50				LMSTN-CRM-GRV-CALC IN PRT-FR VUG FXLN Ø-FW PIECES-SH-GRY+RD	
60				LMSTN-LT TN-CRM-CALC-FXLN- PR XLN Ø-NS-SH RD	
70				LMSTN-CRM-GRV-TN-CALC IN PRT- DNSE-PR XLN Ø-SH-GRV-MF IN PRT	
80				LMSTN-CRM-GRV-FXLN-DNSE-PR XLN Ø-SH-RD-GRV-TURQISE	
90				LMST-GRV-2LT BRN(TN)-DNSE-FXLN SH-VARI COL	
3300				LMSTN-GRV(TN)-FXLN-DNSE- PR XLN Ø-SHLY FOSS IN PRT- SH-RD-GRV	
10					
20				LMSTN-CRM-GRV-TN-CHKY IN PRT-FXLN-PR XLN Ø-FOSS IN PRT-NS-SH VARI COL	
30				LMSTN-TN-GRV-CRM-FXLN-DNSE- PR XLN Ø-CHKY IN PRT- NS-SH VARI COL	
40				CHI-CRM-FRSH	
50				LMSTN-TN-CRM-DOLOM IN PRT- FN-MD XLN-FR XLN Ø-FOSS- NS	
60				LMSTN-CRM-TN-CHI-SHLY IN PRT-DNSE-FXLN-CHI FRSH- PR XLN Ø-NS	

Tape # 3244 (997)

RECEIVED
STATE CORPORATION COMMISSION
MAY 13 1985
CONSERVATION DIVISION
Wichita, Kansas

30
40
50
60
70
80
90
3400
10
20
30
40
50
60
70
80
90
3500
10
20
30
40
50
60
70
80
90
3600
10



NS - SH VARI COL
CHT - CRM - FRSH
LMSTN - TN - CRM - DOLOM IN PRT - EN - 2 MD XLN - FR XLN Ø - FOSS - NS
LMSTN - CRM - TN - CHTY - SLT OOL IN PRT - DNSE - 2 FXLN - CHT FRSH - PR XLN Ø - NS
LMSTN - CRM - TN - DNSE - 2 FXLN - CHTY IN PRT - NS
LMSTN - BRN - GRN - CRM - MOTTLED IN PRT - SL FOSS - PR XLN Ø - TR DRK DEAD STN FW PIECES
LMSTN - CRM - FXLN - DNSE - PR XLN Ø - NS
LMSTN - CRM - GRN - DNSE - 2 FXLN - PR XLN Ø - NS - SH - BLK - RD
SH - RD - LMSN - CRM - GRN - DNSE - PR XLN Ø - NS
SH - RD - LMSN - CRM - CHKY - PR Ø - NS
LMSTN - TN - 2 CRM - VEXLN - SLTLY FOSS IN PRT - PR XLN Ø - NS
LMSTN - TN - 2 CRM - FXLN - DNSE - SLTLY OOL + FOSS - PR XLN Ø - NS
LMSTN - GRN - TN - DNSE - 2 FXLN - PR XLN Ø - NS - SH - BLK
Haebner 3455 (1208) - SH - BLK - FISSILE - CARB
LMSTN - CRM - FXLN - PR XLN Ø - SLTLY CHKY IN PRT - TR DRK OLSON STN FW PIECES - NEO - SH VARI COL
TORONTO 3431 (1334) - SH - RD - GRN - VARI COL - PYRITE
LMSTN - TN - GRN - FXLN + CHKY - 2 MD / CRSE XLN - PR - 2 CR XLN Ø FW PIECES - SLTLY FOSS - VARI TR DRK STN FW PIECES - NEO - TR PYRITE - CHTY - TN - EN - 2
SH - VARI COL - SDY IN PRT
LANSTING 3409 (1252) - LMSTN - CRM - FXLN - DNSE - PP - 2 NU Ø - FOSS - NS - GLAUC IN PRT
C.A.S. 3578 20" - LMSTN - CRM - FXLN - DNSE - NU Ø - NS
C.A.S. 3578 40" - LMSTN - CRM - GRN - DNSE - NU Ø - FOSS - SLTLY - NS - SH - RD + GRN
SH - RD + GRN VARI COL
LMSTN - CRM - FXLN - DNSE - SLTLY CHKY IN PRT - PR XLN Ø - PR - FR VUG Ø IN SOME PIECES - PR - 7 FR SHOW DRK STN - VRY SLT TRACE FREE OIL - MAINLY DEAD OIL IN PRT
C.A.S. 3578 40" - LMSTN - CRM - DNSE - 2 FXLN - PYRITIC IN PRT - PR XLN Ø - CHTY - FRSH - W/ DRK SPID STN
LMSTN - SLT SHOW SCATTERED SAT STAIN FW PIECES - VRY SLT SFO - MAINLY STN - PR AN PT Ø - FR SHOW DEAD OIL IN PRT
C.A.S. 3578 - LMSTN - CRM - BUFF - FXLN - PR XLN Ø - OOL IN PRT - NEO - NO STN
LMSTN - CRM - FXLN - DNSE - SLTLY CHTY IN PRT - OOL IN PRT - PR VUG Ø IN PRT - SLT SHOW DRK STN W SLT SAT - SLT SHOW PRE DEAD OIL
SH - GRN RD
LMSTN - CRM - BUFF - FXLN - DNSE - PR XLN Ø - SLTLY OOL IN PRT - TR DRK STN FW PIECES - MOSTLY BARREN - NEO
LMSTN - CRM - TN - FXLN - DNSE - OOL IN PRT - PR - 2 NU Ø - NO STN - NEO
LMSTN - BUFF - CRM - DNSE - 2 FXLN - SL FOSS - SL OOL IN PRT - PR XLN Ø - NS
LMSTN - CRM - DNSE - 2 FXLN - SLTLY CHKY - TR DRK STN FW PIECES - NEO - PR

WELL SHOW IN PHOTO
...
...

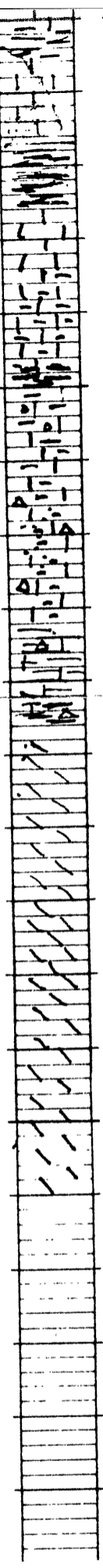
RECEIVED
STATE CORPORATION COMMISSION
MAY 13 1965
CONSERVATION DIVISION
Wichita, Kansas

DST # 1 3502-357
30-60-60-90
IF GD BLOW OFF BOTTOM
BUCKET IN 8 minutes
FF GD BLOW OFF BOTTOM
BUCKET IN 10 minutes
REC 960' SALT WATER
CHLORIDES 47000
IFP 66-212#
ISIP 1224#
FFP 267-468#
FSIP 1224#
BHT 112°

Pipe STRAP
STRAP 3598.48
BOARD 3598.42
.06 v

DST # 2 3590-3666
30-30-30-30
IF WK BLOW DIED IN
FF - NO BLOW
REC 10' OLG MUD - NO

50
60
70
80
90
3800
10
20
30
40
50
60
70
80
90
3900



PR. PNT. FR AMOUNT DAK GILLON...
STN - TR FO.
SH - RD.

LM STN - CRM - DNSE - SPLY POSS FW
PIECES - TR DARK STN - MAINLY
DAK TRRY - VRY SLT TR FO - SHOWS
DECREASED IN 20" CORE.
SH RD - TR SD CLR - NS.

CFS 3770
20"

SH - RD

LM STN - CRM - DNSE - EXLN - PR XLN - PR
KN PT - FR SHOW DOK GILSON JTC
STN - TR FO.

LM STN - CRM - DNSE - PR - DECREASING
SHOW GILSON JTC STN - SH RD +
CRM W/ SLT AMOUNT SD GRNS.
SH SPLY CONG.

CFS 3808
40"

SHLN - LMY - SPLY SDY CONG - DOK
GILSON STN - W TR - DOK HVY FO.

CONG - RD SH AND LM - TRCHT

CONG - LD SH - LM W sm amount
of CHT + TR SD.

MAROON SH CONG W/ LM STN - CHT + HVY.

MAROON SH CONG - PRED LM STN W/ TRSD
FCHT.

EROSION IN ARBUCKLE (3842-595)

CFS 3845
40"

CONG AA - MAINLY MAROON SH
TR DO.
DOL - CRM - MDXLN - SUC - GLAUC - PR XLN -
NO ODOR NO SHAW - VRY SPLY - RD
SH -

ARBUCKLE (3858-616)

CFS 3860
20"

DOL - CRM - MD EXLN - SUC - GLAUC - PR - PR XLN
- NO ODOR - NO STN - NEO.

CFS 3866
20"

DOL - CRM - MD - PR XLN - Rhomb + SUC - INCRSE
IN XLN + WYCRSE - CERD - GLAUC - NO STAIN -
NEO - VRY SLT ODOR - GLAUC INCRSE W
40" CORE -

CFS 3876
20"

DOL - CRM - EXLN - Rhomb - PR XLN - GLAUC -
NO STN - NO ODOR - NEO.

CFS 3890
20"

DOL - CRM - EXLN - Rhomb - PR XLN -
- NO STN - NO ODOR - NEO.

DOL - CRM - EXLN - SUC - PR XLN W/
MED RHOMBS + GLAUC - NO STAIN - NO
ODOR - NEO.

RTD 3910 CFS 3910
40"

DOL - CRM - W H - EXLN W CRSE XLN
Rhomb - PR XLN - NO STN - NO ODOR
NEO.

DOL - MD - CRSE XLN - WYCRSE XLN
Rhomb - CRW W/ GLAUC - RD XLN -
TR LSTN - NO ODOR - NEO.

RECEIVED
STATE CORPORATION COMMISSION
MAY 13 1935
CONSERVATION DIVISION
Wichita, Kansas