

15-179-05310-00-00

sec

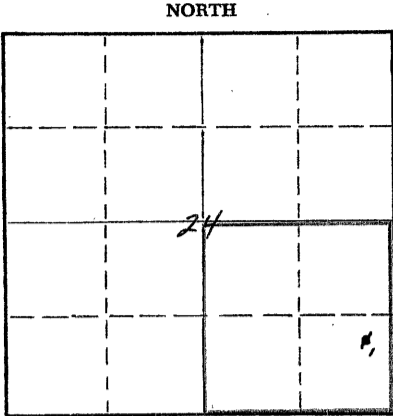
STATE OF KANSAS
STATE CORPORATION COMMISSION

WELL PLUGGING RECORD

Give All Information Completely
Make Required Affidavit
Mail or Deliver Report to:
Conservation Division
State Corporation Commission
800 Bitting Building
Wichita, Kansas

Sheridan County, Sec. 24 Twp 6S Rge. (E) 26 (W)

Location as "NE/CNW/SW" or footage from lines NE/4 SE/4 SE/4
Lease Owner Skelly Oil Company
Lease Name Agnes Marx Well No. 1
Office Address Box 1650, Tulsa, Oklahoma
Character of Well (completed as Oil, Gas or Dry Hole) Dry Hole
Date well completed November 24, 19 55
Application for plugging filed November 25, 19 55
Application for plugging approved November 28, 19 55
Plugging commenced November 25, 19 55
Plugging completed November 25, 19 55
Reason for abandonment of well or producing formation Dry Hole



Locate well correctly on above Section Plat

If a producing well is abandoned, date of last production 19
Was permission obtained from the Conservation Division or its agents before plugging was commenced? Yes (Verbally)

Name of Conservation Agent who supervised plugging of this well Mr. Eldon Petty
Producing formation Depth to top Bottom Total Depth of Well 3865 Feet
Show depth and thickness of all water, oil and gas formations.

OIL, GAS OR WATER RECORDS

CASING RECORD

FORMATION	CONTENT	FROM	TO	OD SIZE	PUT IN	PULLED OUT
Lansing Lime	Dry	3671'	3860'	8-5/8"	313' 0"	None

Describe in detail the manner in which the well was plugged, indicating where the mud fluid was placed and the method or methods used in introducing it into the hole. If cement or other plugs were used, state the character of same and depth placed, from feet to feet for each plug set.

25 sacks of cement	3865' to 3774'
Mud laden fluid	3774' to 300'
Wood plug	300'
30 sacks of cement	300' to 240'
Mud laden fluid	240' to 40'
Wood plug	40'
20 sacks of cement	40' to 6'
Surface soil	6' to 0'

(If additional description is necessary, use BACK of this sheet)

Name of Plugging Contractor Sterling Drilling Company
Address Sterling, Kansas

STATE OF Kansas COUNTY OF Reno, ss.
H. E. Wamsley (employee of owner) of the above-described well, being first duly sworn on oath, says: That I have knowledge of the facts, statements, and matters herein contained and the log of the above-described well as filed and that the same are true and correct. So help me God.

(Signature) [Signature]
Box 391, Hutchinson, Kansas (Address)

SUBSCRIBED AND SWORN TO before me this 10th day of December, 19 55

My commission expires April 7, 1959 [Signature] Notary Public.

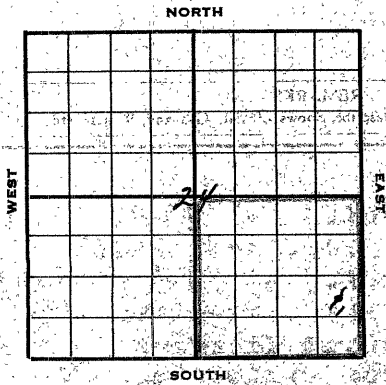
PLUGGING
FILE SEC 24 T 6 R 26W
BOOK PAGE 19 LINE 25

12-12-55

18-179-05310-00-00

SKELLY OIL COMPANY

Well Record



Lease Name and No. AGNES HART 247077 Well No. 2 Elev. 2387'
 Lease Description 22 1/4 Section 24-65-20N,
Shelby County, Kansas (160 acres)
 Location made November 11, 1955 by P. J. Gussner
370 feet from North line 370 feet from East line
370 feet from South line 370 feet from West line of 24

Work com'd 11/23 1955 Rig comp'd 11/24 1955 Drlg. com'd 11/26 1955 Drlg. comp'd 11/23 1955
 Rig Contractor Starling Drilling Company
 Drilling Contractor Starling Drilling Company, Starling, Kansas
 Rotary Drilling from 0' to 3865' Cable Tool Drilling from _____ to _____

Commenced Producing 01/10/56 1956 Initial Prod. before shot or acid _____
 Initial Prod. after shot or acid _____

Dry Gas Well Press. _____ Volume _____
 Casing Head Gas Pressure _____ Volume _____
 Braden Head (_____ Size _____) Gas Pressure _____ Volume _____
 Braden Head (_____ Size _____) Gas Pressure _____ Volume _____

PRODUCING FORMATION PRE SOLS (Name) Top _____ Bottom _____ TOTAL DEPTH 3865'

CASING RECORD

OD Size	Wt.	Thds.	Where Set	PULLED OUT			LEFT IN			KIND	Cond'n	CEMENTING	
				Jts.	Feet	In.	Jts.	Feet	In.			Sacks Used	Method Employed
<u>8-5/8"</u>	<u>22.7</u>	<u>54</u>	<u>370'</u>				<u>313</u>	<u>0</u>	<u>Armed</u>	<u>4</u>	<u>105</u>	<u>Ballston</u>	
<u>(8-5/8" casing set 2' in 4-11-56)</u>													

Liner Set at _____ Length _____ Perforated at _____
 Liner Set at _____ Length _____ Perforated at _____
 Packer Set at _____ Size and Kind _____
 Packer Set at _____ Size and Kind _____

SHOT OR ACID TREATMENT RECORD

Date	FIRST		SECOND		THIRD		FOURTH	
	Ft. and	Ft.	Ft. and	Ft.	Ft. and	Ft.	Ft. and	Ft.

SIGNIFICANT GEOLOGICAL FORMATIONS

NAME	Top	Bottom	GAS		OIL		REMARKS
			From	To	From	To	
<u>Foranto Sand</u>	<u>3570'</u>						
<u>Hubner Sand</u>	<u>3571'</u>						
<u>Liming Sand</u>	<u>3572'</u>						
<u>Blue Sand, City</u>	<u>3580'</u>						

CLEANING OUT RECORDS

	DATE COMMENCED	DATE COMPLETED	PROD. BEFORE	PROD. AFTER	REMARKS
1st					See Reverse for other d
2nd					" " " "
3rd					" " " "
4th					" " " "

PLUGGING BACK AND DEEPENING RECORDS

	Date Commenced	Date Completed	No. Feet Plugged Back or Deepened	Prod. Before	Prod. After	REMARKS
1st						See Reverse for other d
2nd						" " " "
3rd						" " " "
4th						" " " "

(See Reverse for Record of Formation)

PLUGGING

FILE NO. 24-6-26w
 BOOK PAGE 19 LINE 25

RECORD OF FORMATIONS

FORMATION	TOP	BOTTOM	REMARKS
Surface soil, shale, sand clay	0	181	2 1/2" and 3" diameter 4-5/8" ID, 22.77, Area 2.44, 2.44, 2.44, steel casing (1 inch) at 320' with 175 sacks of cement and 200 sacks of calcium chloride. Cement did not circulate, no cement at bottom of casing. Casing to 320' with 175 sacks of cement.
shale	181	1465	
shale and lime shells	1465	1700	
shale and red bed	1700	2150	
shale	2150	2160	
shale	2160	2190	
shale	2190	2470	
shale and lime	2470	3000	
shale	3000	3090	
shale	3090	3155	
shale	3155	3215	
shale and shale	3215	3272	

FORMATION	TOP	BOTTOM	REMARKS
shale	3272	3284	
Green, fine crystalline line	3284	3706	Producing formation. Initial flow pressure 30 psi, final flow pressure 30 psi.
Green colored chalky sand sandy lime	3706	3736	Producing formation. Initial flow pressure 30 psi, final flow pressure 30 psi.
Green, fine crystalline line	3736	3748	Poor permeability, fair saturation.
Green, fine crystalline line	3748	3753	Caliche permeability, fair saturation and saturation.
Green, fine crystalline line	3753	3756	Van Halburton drill stem test, packer set at 3730', used 36' anchor, open 1 hour, fair flow, recovered 10' of muddy water, no oil, MFP-30%, no flow pressure.
Green, fine crystalline line	3756	3833	Producing formation. Initial flow pressure 30 psi, final flow pressure 30 psi.
Green, fine crystalline line	3833	3839	Fine permeability, saturated zone.
Green, fine crystalline line	3839	3855	Van Halburton drill stem test, packer set at 3824', used 36' anchor, open 1 hour, fair flow, recovered 10' of mud, MFP-30%.

On November 25, 1955, plugged the well as follows:

25 sacks of cement	3855' to 3774'
and lead fluid	3774' to 3700'
lead plug	3700' to 3600'
50 sacks of cement	3600' to 3482'
and lead fluid	3482' to 3480'

Plugged and abandoned November 25, 1955.

FORMATION	TOP	BOTTOM	REMARKS
shale	3480	3480	