

STATE CORPORATION COMMISSION OF KANSAS  
OIL & GAS CONSERVATION DIVISION  
WELL COMPLETION OR RECOMPLETION FORM  
ACO-1 WELL HISTORY  
DESCRIPTION OF WELL AND LEASE

C

API NO. 15-065-22354-00-01

County...Graham

SW NE Sec. 19 Twp. 6S Rge. 22 East West

3300  
550' Ft North from Southeast Corner of Section  
1980' Ft West from Southeast Corner of Section  
(Note: Locate well in section plat below)

Lease Name...Demuth 32-19 Well #4

Field Name...Pen

Producing Formation...Lansing-Kansas City

Elevation: Ground...2418' KB...2422'

Operator: License # 8009-5000  
Name PanCanadian Petroleum Company  
Address 600 - 17th St. Suite 1800  
City/State/Zip Denver, CO, 80202

Purchaser...Koch Oil

Operator Contact Person Jim Keisling/Forrest Moore  
Phone (303) 825-8371

Contractor: License # 6033  
Name Murfin Drilling Company

Wellsite Geologist Dan Watterson  
Phone (303) 825-8371

Designate Type of Completion  
 New Well  Re-Entry  Workover

Oil  SWD  Temp Abd  
 Gas  Inj  Delayed Comp.  
 Dry  Other (Core, Water Supply etc.)

If ONWO: old well info as follows:  
Operator  
Well Name  
Comp. Date Old Total Depth

WELL HISTORY

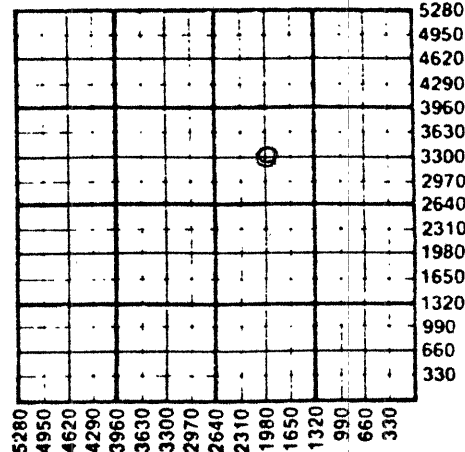
Drilling Method:  
 Mud Rotary  Air Rotary  Cable

3/5/87 3/12/87 4/27/87  
Spud Date Date Reached TD Completion Date

3975' 3920'  
Total Depth PBTD

Amount of Surface Pipe Set and Cemented at 309 feet  
Multiple Stage Cementing Collar Used? Yes  No  
If yes, show depth set...feet  
If alternate 2 completion, cement circulated from...feet depth to...w/...SX cmt  
Cement Company Name Halliburton  
Invoice #

Section Plat



WATER SUPPLY INFORMATION

Disposition of Produced Water:  Disposal  
Docket #  Repressuring

Questions on this portion of the ACO-1 call:  
Water Resources Board (913) 296-3717

Source of Water:  
Division of Water Resources Permit #

Groundwater 4260  
4260 Ft North from Southeast Corner  
(Well) ...Ft West from Southeast Corner of  
Sec 20 Twp 6S Rge East 22 West

Surface Water...Ft North from Southeast Corner  
(Stream, pond etc)...Ft West from Southeast Corner  
Sec Twp Rge East West

Other (explain)  
(purchased from city, R.W.D. #)

INSTRUCTIONS: This form shall be completed in triplicate and filed with the Kansas Corporation Commission, 200 Colorado Derby Building, Wichita, Kansas 67202, within 120 days of the spud date of any well. Rule 82-3-130, 82-3-107 and 82-3-106 apply. Information on side two of this form will be held confidential for a period of 12 months if requested in writing and submitted with the form. See rule 82-3-107 for confidentiality in excess of 12 months. One copy of all wireline logs and drillers time log shall be attached with this form. Submit CP-4 form with all plugged wells. Submit CP-111 form with all temporarily abandoned wells.

All requirements of the statutes, rules and regulations promulgated to regulate the oil and gas industry have been fully complied with and the statements herein are complete and correct to the best of my knowledge.

Signature James D. Keisling  
Title Coord., Eng. Operations U.S. Date 12/4/87

Subscribed and sworn to before me this 4 day of December 1987

Notary Public

Date Commission Expires

K.C.C. OFFICE USE ONLY

Letter of Confidentiality Attached  
 Wireline Log Received  
 Drillers Timelog Received

Distribution

KCC  SWD/Rep  NGPA  
 KGS  Plug  Other  
(Specify)

Sec. 19 Twp. 6S Rge. 22

Reed  
12-23-87

Operator Name PanCanadian Petroleum Company Lease Name Demuth Well # 4

Sec. 19 Twp. 6S Rge. 22 East West County Graham

15-065-22354-00-0

WELL LOG

INSTRUCTIONS: Show important tops and base of formations penetrated. Detail all cores. Report all drill stem tests giving interval tested, time tool open and closed, flowing and shut-in pressures, whether shut-in pressure reached static level, hydrostatic pressures, bottom hole temperature, fluid recovery, and flow rates if gas to surface during test. Attach extra sheet if more space is needed. Attach copy of log.

Drill Stem Tests Taken [X] Yes [ ] No
Samples Sent to Geological Survey [ ] Yes [ ] No
Cores Taken [X] Yes [ ] No

Formation Description [X] Log [ ] Sample

DST #1 Lansing-Kansas City D, E & F zones 3698-3738' 10-45-60-90
IHP 1940, IFP 353-674, ISIP 1205, FFP 743-1170, FSIP 1205, FHP 1905, BHT 117 deg Sampler 2400 cc muddy water. 60' gas in pipe.

DST #2 Lansing-Kansas City I & J zones 3789-3824' 10-45-60-90
IHP 1974, IFP 79-83, ISIP 228, FFP 134-189, Sampler 1800 cc clean oil, 350 cc mud.

DST #3 Lansing-Kansas City K & L zones 3819-3854' 15-45-60-90
IHP 2087, IFP 20-20, ISIP 1248, FFP 22-26, FSIP 1202. Rainbow of oil. Zero gas.

Core #1 3794-3824'

Core #2 3840-3854'

Table with columns: Name, Top, Bottom. Rows include Topeka, Heebner, Toronto, Lansing-Kansas City A through L, Conglomerate, and Arbuckle.

RELEASED

JAN 11 1989

FROM CONFIDENTIAL

Form sections: CASING RECORD, PERFORATION RECORD, TUBING RECORD, Date of First Production, Estimated Production. Includes various fields for well details and production data.

Disposition of gas: [X] Vented [ ] Open Hole [X] Perforation [ ] Sold [ ] Other (Specify) [ ] Used on Lease [ ] Dually Completed [ ] Commingled

PLAT AND CERTIFICATION OF ACREAGE ATTRIBUTABLE TO AN OIL WELL

State Corporation Commission, Conservation Division  
200 Colorado Derby Bldg. Wichita, Kansas 67202

OPERATOR PanCanadian Petroleum Company

LOCATION OF WELL:

LEASE Demuth

660 feet from the south line

1980 feet from the east line

WELL NUMBER 32-19 #4

Of the SW/NE of Sec 19 T.6S R.22W

FIELD Pen

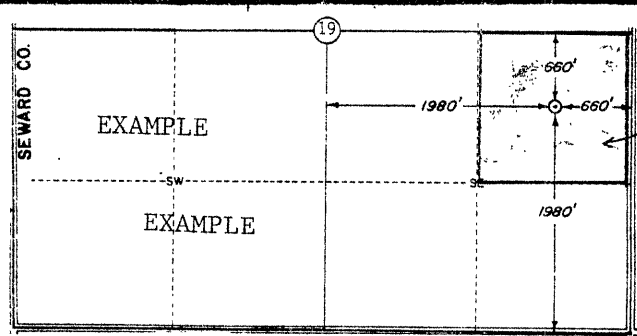
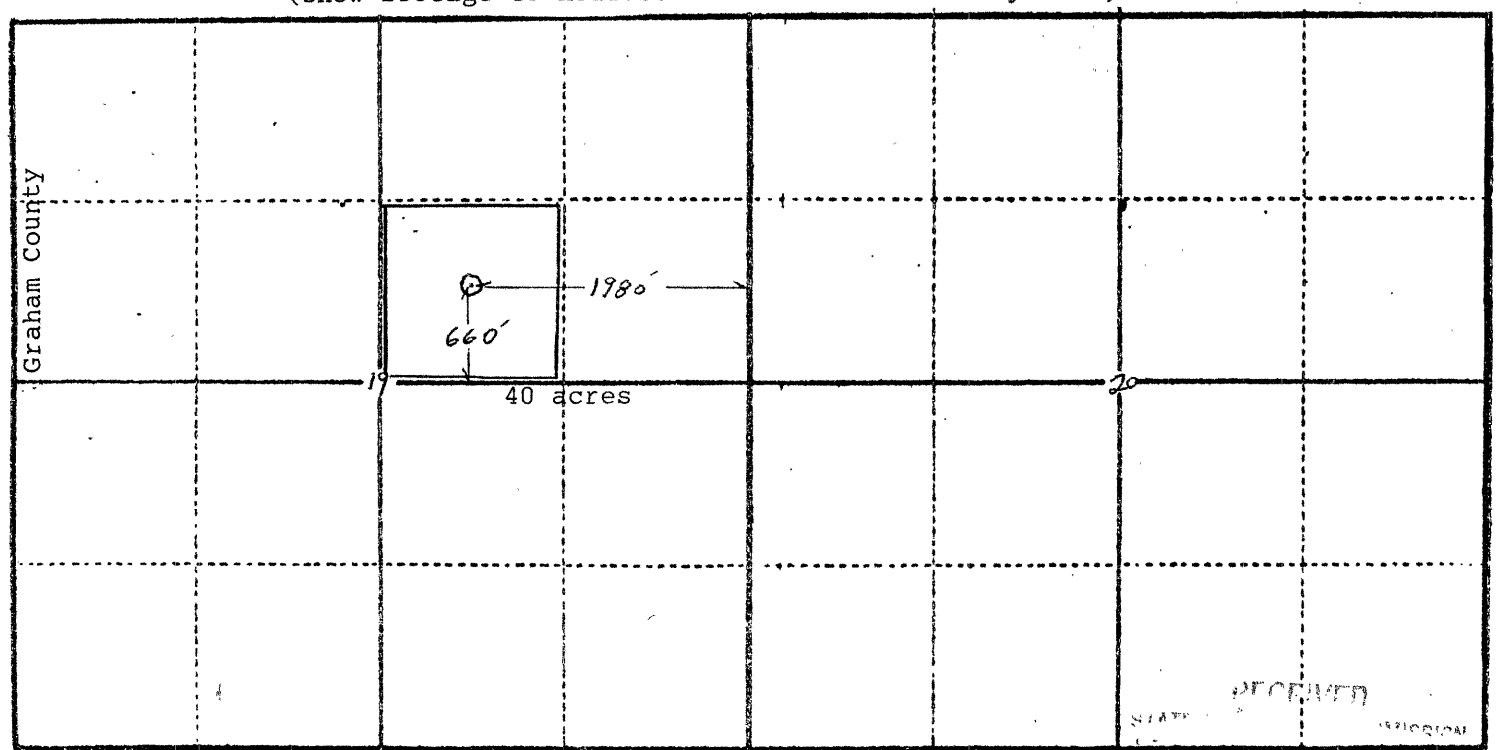
COUNTY Graham

\*NUMBER OF ACRES  
ATTRIBUTABLE TO WELL 40

DESCRIPTION OF ACREAGE: C SW/NE  
Section 19, T6S, R22W

PLAT

(Show location of Well and outline attributable acreage)  
(Show footage to nearest lease or unit boundary line)



DEC 29 1987  
KANSAS GEOLOGICAL SURVEY  
WICHITA BRANCH

RECEIVED  
STATE CORPORATION COMMISSION

DEC 23 1987  
12-23-87  
CONSERVATION DIVISION  
Wichita, Kansas

RELEASED  
JAN 11 1989  
FROM CONFIDENTIAL

The undersigned hereby certifies that he is Coordinator, Engineering Operations U.S.  
for PanCanadian Petroleum Company, a duly authorized agent, that all information  
shown hereon is true and correct to the best of his knowledge and belief, and that  
all acreage claimed as attributable to the well named herein is held by production  
from that well.

James D. Keisling  
James D. Keisling

Suscribed and sworn to before me on this 4th day of December, 1987.

Kathleen L. Ramsey  
Notary Public

My Commission expires March 15 1991