

15163-30160-0050

TYPE OR PRINT

NOTICE OF INTENTION TO DRILL

RULE 82-2-311

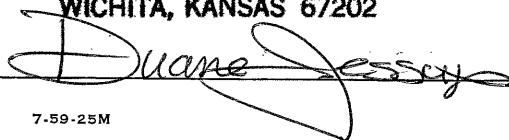
TO BE FILED WITH THE STATE CORPORATION COMMISSION PRIOR TO COMMENCEMENT OF WELL

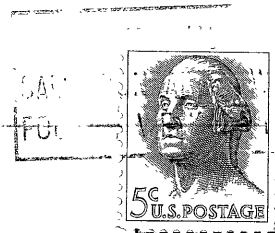
1. Operator Aylward Drilling Company Address 909 1st Nat'l Bank Bldg., Wichita, Kansas
2. Lease name Burton Well No. 1 County Rooks
3. Well Location C E $\frac{1}{2}$ SE SW Sec. 15 Township 7 South Range 19 West
4. Well to be drilled 330 ft. from nearest lease line.
5. Drilling Contractor Abercrombie Drilling, Inc. Address 810 Union Center, Wichita, Kansas
6. Type of equipment: Rotary Cable Tool Approx. date operation to begin May 7, 1956.
7. Well to be drilled for Oil Gas Disposal Input Estimated Total Depth of Well 3400 ft.
8. Depth of deepest fresh water well within one mile of location _____ ft. If none exists, write NONE NONE.
9. Ground elevation at location is approx. level xxxxxxxx with ft. higher or ft. lower than ground elevation at water well.
10. Depth of the deepest municipal water well within three miles of location _____ ft. If none exists, write NONE NONE.
11. Operator states that he will set surface pipe at least 25 ft. below all Tertiary or unconsolidated deposits and, taking into consideration differences in ground elevations, that the minimum depth necessary, to the best of his knowledge and belief, to protect all fresh water zones is 100 ft. and operator agrees to set surface pipe at this location to a depth of not less than 1170 ft. Alternate 1 Alternate 2 .

REMARKS:

**AYLWARD DRILLING COMPANY
909 FIRST NAT'L BANK BLDG.
WICHITA, KANSAS 67202**

Signature of Operator





State Corporation Commission of Kansas
Conservation Division
500 Insurance Building
212 North Market
Wichita 2, Kansas

RECEIVED
STATE CORPORATION COMMISSION
5/9/66
MAY 9 - 1966
CONSERVATION DIVISION
Wichita, Kansas

(IF PREFERRED, MAIL IN ENVELOPE)