

TYPE

NOTICE OF INTENTION TO DRILL

C-1

TO BE FILED WITH THE STATE CORPORATION COMMISSION
PRIOR TO COMMENCEMENT OF WELL

API Number 15-163-20,545
(For office use only)
-60-00

1. Operator J. L. King Oil Operations
Address W. Hiway 40, Russell, Kans.
2. Contractor Red Tiger Drlg. Co.
Address Wichita, Kans.
3. Type of Equipment: Rotary Cable Tool _____
4. Well to be Drilled for: Oil Gas _____
Disposal _____ Input _____ Other _____
5. Depth of Deepest Fresh Water within 1 mile 50 ft.
6. Depth of Municipal Water Well within 3 miles none ft.
7. Depth to Protect all Fresh Water 100 ft.
8. Amount of Surface Casing to be set 200 ft.
9. Alternate No. 1 _____ No. 2

Starting Date 10-27-74
County Rooks
Sec 4 Twp 7 S Rge 19 ^EW
Spot Location C W $\frac{1}{2}$ SE SE
Nearest Lease Line 330 ft.
Lease Name Reed
Well No. 1
Est. Total Depth 3485 ft.

REMARKS:

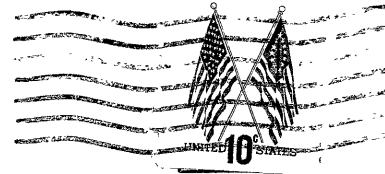
OPERATOR STATES THAT HE WILL COMPLY WITH K. S. A. 55-128

Signature of Operator

J. L. King
by [Signature]

[Signature]





State Corporation Commission of Kansas
Conservation Division
P. O. Box 17027
Wichita, Kansas 67217

RECEIVED
STATE CORPORATION COMMISSION

OCT 21 1974

CONSERVATION DIVISION
Wichita, Kansas

10-21-74

(IF PREFERRED, MAIL IN ENVELOPE)