

FOR KCC USE:

FORM C-1 7/91

FORM MUST BE TYPED

FORM MUST BE SIGNED

ALL BLANKS MUST BE FILLED

EFFECTIVE DATE: 7-16-2000

State of Kansas

DISTRICT # 4

NOTICE OF INTENTION TO DRILL

SGA? Yes No

Must be approved by the K.C.C. five (5) days prior to commencing well.

Expected Spud Date 7 month 8¹⁶ day 2000 year

Spot APPROX SW-SE NW Sec 6 Twp 11 S, Rg 20 East West

OPERATOR: License # 5259 MAI OIL OPERATIONS, INC. P.O. BOX 33 RUSSELL, KS 67665 ALLEN BANGERT 785-483-2169

2450 feet from South North line of Section 1590 feet from East West line of Section IS SECTION REGULAR X IRREGULAR?

(NOTE: Locate well on the Section Plat on Reverse Side) County: ELLIS Lease Name: RICHARDS Well #: 7 Field Name: MENDOTA Is this a Prorated/Spaced Field? yes X no Target Formation(s): ARBUCKLE Nearest lease or unit boundary: 330' Ground Surface Elevation: 2050 feet MSL Water well within one-quarter mile: X yes no Public water supply well within one mile: yes X no Depth to bottom of fresh water: 180' Depth to bottom of usable water: 750' Surface Pipe by Alternate: 1 X 2 Length of Surface Pipe Planned to be set: 250' Length of Conductor pipe required: NONE Projected Total Depth: 3670' Formation at Total Depth: ARBUCKLE Water Source for Drilling Operations: well farm pond X other

CONTRACTOR: License # 9431 VONFELDT DRILLING

Well Drilled For: Well Class: Type Equipment: X Oil Enh Rec X Infield X Mud Rotary Gas Storage Pool Ext. Air Rotary OWWO Disposal Wildcat Cable Seismic; # of Holes Other

If OWWO: old well information as follows: Operator: Well Name: Comp. Date: Old Total Depth

Directional, Deviated or Horizontal wellbore? yes X no If yes, true vertical depth: Bottom Hole Location:

Will Cores Be Taken? yes X no If yes, proposed zone:

AFFIDAVIT

The undersigned hereby affirms that the drilling, completion and eventual plugging of this well will comply with K.S.A. 55-101, et. seq. It is agreed that the following minimum requirements will be met:

- 1. Notify the appropriate district office prior to spudding of well;
2. A copy of the approved notice of intent to drill shall be posted on each drilling rig;
3. The minimum amount of surface pipe as specified below shall be set by circulating cement to the top; in all cases surface pipe shall be set through all unconsolidated materials plus a minimum of 20 feet into the underlying formation;
4. If the well is dry hole, an agreement between the operator and the district office on plug length and placement is necessary prior to plugging;
5. The appropriate district office will be notified before well is either plugged or production casing is cemented in;
6. IF AN ALTERNATE II COMPLETION, PRODUCTION PIPE SHALL BE CEMENTED FROM BELOW ANY USABLE WATER TO SURFACE WITHIN 120 DAYS OF SPUD DATE. IN ALL CASES, NOTIFY DISTRICT OFFICE PRIOR TO ANY CEMENTING.

I hereby certify that the statements made herein are true and to the best of my knowledge and belief.

Date: 7-5-00 Signature of Operator or Agent: Allen Bangert Title: PROD. SUPT

FOR KCC USE: API # 15- 051-250450000 Conductor pipe required NONE feet Minimum surface pipe required 200 feet per Alt. X(2) Approved by: JK 7-11-2000 This authorization expires: 1-11-2001 (This authorization void if drilling not started within 6 months of effective date.) Spud date: Agent:

RECEIVED STATE CORPORATION COMMISSION JUL 06 2000 7/6/2000 CONSERVATION DIVISION Wichita, Kansas

- REMEMBER TO: - File Drill Pit Application (form CDP-1) with Intent to Drill; - File Completion Form ACO-1 within 120 days of spud date; - File acreage attribution plat according to field proration orders; - Notify appropriate district office 48 hours prior to workover or re-entry; - Submit plugging report (CP-4) after plugging is completed; - Obtain written approval before disposing or injecting salt water.

Mail to: KCC - Conservation Division, 130 S. Market - Room 2078, Wichita, Kansas 67202.

20 W

IN ALL CASES PLOT THE INTENDED WELL ON THE PLAT BELOW

PLAT OF ACREAGE ATTRIBUTABLE TO A WELL IN A PRORATED OR SPACED FIELD

If the intended well is in a prorated or spaced field, please fully complete this side of the form. If the intended well is in a prorated or spaced field complete the plat below showing that the well will be properly located in relationship to other wells producing from the common source of supply. Please show all the wells within 1 mile of the boundaries of the proposed acreage attribution unit for gas wells and within 1/2 mile of the boundaries of the proposed acreage attribution unit for oil wells.

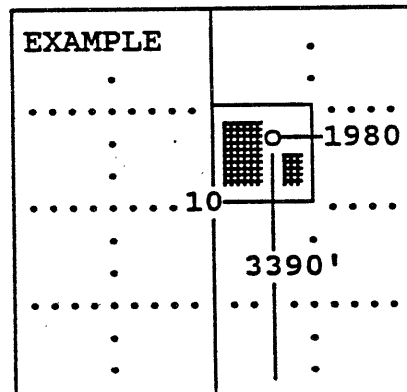
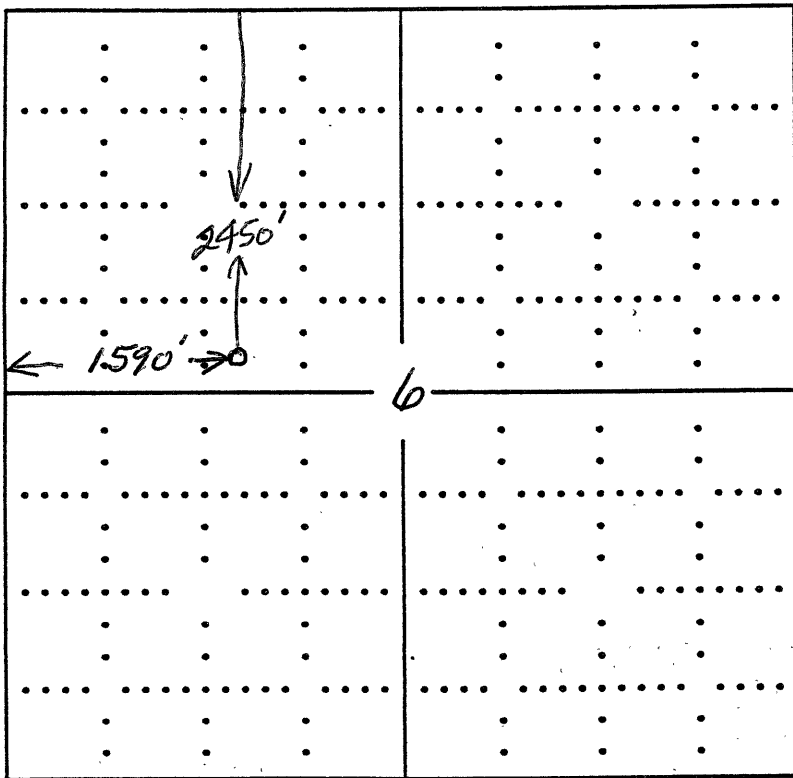
API NO. 15- _____
 OPERATOR MAI OIL OPERATIONS, INC. LOCATION OF WELL: COUNTY ELLIS
 LEASE RICHARDS 2450 feet from south/north line of section
 WELL NUMBER 7 1590 feet from east/west line of section
 FIELD MENDOTA SECTION 6 TWP 11 RG 20W

NUMBER OF ACRES ATTRIBUTABLE TO WELL _____ IS SECTION _____ REGULAR or IRREGULAR
 QTR/QTR/QTR OF ACREAGE _____ IF SECTION IS IRREGULAR, LOCATE WELL FROM NEAREST
CORNER BOUNDARY.

Section corner used: NE NW SE SW

PLAT

(Show location of the well and shade attributable acreage for prorated or spaced wells.)
 (Show footage to the nearest lease or unit boundary line.)



SEWARD CO.

In plotting the proposed location of the well, you must show:

- 1) The manner in which you are using the depicted plat by identifying section lines, i.e. 1 section, 1 section with 8 surrounding sections, 4 sections, etc.;
- 2) the distance of the proposed drilling location from the section's south/north and east/west; and
- 3) the distance to the nearest lease or unit boundary line.