

TYPE OR PRINT

NOTICE OF INTENTION TO DRILL

C-1

15-163-20,0720000

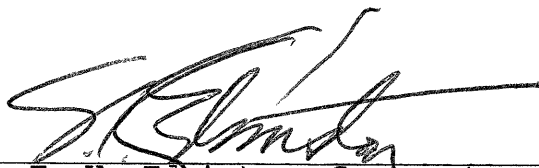
TO BE FILED WITH THE STATE CORPORATION COMMISSION PRIOR TO COMMENCEMENT OF WELL

1. Operator Et Al, Inc. Address 501 Cameron Bldg., Okla. City, Okla.
2. Lease name Schneider Well No. 1 County Rooks
3. Well Location C SW SE Sec. 21 Township 7S Range 19W
4. Well to be drilled 660 ft. from nearest lease line.
5. Drilling Contractor E. K. Edmiston Drlg. Co. Address 425 First Natl Bank Bldg., Wichita, Ks.
6. Type of equipment: Rotary Cable Tool Approx. date operation to begin Oct. 13, 1967
7. Well to be drilled for Oil Gas Disposal Input Estimated Total Depth of Well 3400 ft.
8. Depth of deepest fresh water well within one mile of location 80 ft. If none exists, write NONE
9. Ground elevation at location is approx. _____ ft. higher or _____ ft. lower than ground elevation at water well.
10. Depth of the deepest municipal water well within three miles of location _____ ft. If none exists, write NONE
None
11. Operator states that he will set surface pipe at least 25 ft. below all Tertiary or unconsolidated deposits and, taking into consideration differences in ground elevations, that the minimum depth necessary, to the best of his knowledge and belief, to protect all fresh water zones is 225 ft. and operator agrees to set surface pipe at this location to a depth of not less than 225 ft. Alternate 1 Alternate 2 .

REMARKS:

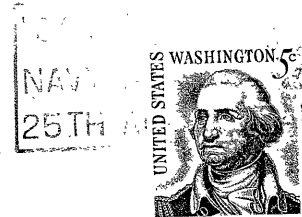
Will advise fresh water information as soon as we get it.

Signature of Operator



E. K. Edmiston, Contractor





**State Corporation Commission of Kansas
Conservation Division
500 Insurance Building
212 North Market
Wichita, Kansas 67202**

(IF PREFERRED, MAIL IN ENVELOPE)

RECEIVED
STATE CORPORATION COMMISSION
OCT 13 1967
10/13/67
CONSERVATION DIVISION
Wichita, Kansas