

State of Kansas

NOTICE OF INTENTION TO DRILL

Starting date 7-15-83  
Month Day Year

API Number 15-065-21823 0000  
NW, SE, NW, Sec, Sec 14, T 7 S, R 22 ~~East~~ West

Operator license # 5669

1650 ft. from N or ~~S~~ line of section

Operator name & address Helberg Oil Company  
Box 32  
Morland, Kansas 67650

1650 ft. from W or ~~E~~ line of section

Nearest lease or unit boundary line 330 feet

County Graham

Lease name Worcester Well # 1

Contact person Jerry M. Helberg

Surface piped by alternate 1 \_\_\_\_\_ or 2 x

Phone 913-627-5665

Domestic well within 330 ft. \_\_\_\_\_ yes; Municipal well within one mile \_\_\_\_\_ yes

Contractor license # 5669

x no; x no

Contractor name & address Helberg Oil Company  
Box 32  
Morland, Kansas 67650

Depth of fresh water 50 feet

Lowest usable water formation 50 Dakota

Depth to bottom of usable water 50 1100 feet

Surface pipe to be set 200 feet

Conductor pipe if any required none feet

Ground surface elevation \_\_\_\_\_ feet MSL

Type equipment: rotary x air \_\_\_\_\_ cable \_\_\_\_\_

Est. total depth 4000 feet

Well drilled for: oil x gas \_\_\_\_\_ SWD \_\_\_\_\_

Inj \_\_\_\_\_ OWWO \_\_\_\_\_

Well class: infield \_\_\_\_\_ poll ext x wildcat \_\_\_\_\_

THIS PERMIT

JAN 8 1984

EXPIRES

I certify that we will comply with K.S.A. 55-101, et seq., plus (eventually plugging hole) KCC specs.

Date 7-7-83 Signature of operator or agent Jerry M. Helberg Title Operator

~~\$40 Fee Paid~~

Date received 7-8-83

To be filed with Kansas Corporation Commission

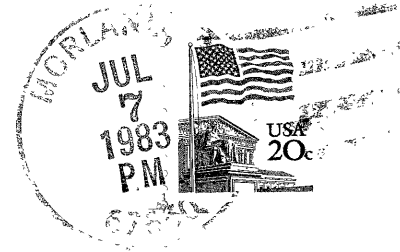
5 days prior to commencing well.

Card to be typed

*mhc/KC/DHE 7/8/83*

form C-1  
1/83

*ofc*



**State Corporation Commission of Kansas  
Conservation Division  
200 Colorado Derby Bldg.  
202 W. 1st St.  
Wichita, Kansas 67202**

58/8/±

Wichita, Kansas  
CONSERVATION DIVISION

JUL 08 1983

STATE CORPORATION COMMISSION  
RECEIVED

(MAIL IN ENVELOPE)