

TYPE OR PRINT

NOTICE OF INTENTION TO DRILL

C-1

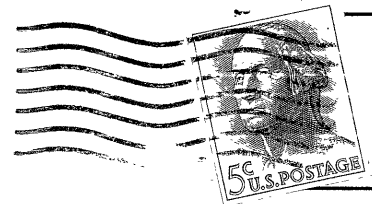
15-121-19772-00-00

TO BE FILED WITH THE STATE CORPORATION COMMISSION PRIOR TO COMMENCEMENT OF WELL

1. Operator Investor's Oil Inc Address St Louis Mo
2. Lease name Phillips Well No. 4-6 County Maasin
3. Well Location SE NE SE Sec. 14 Township 16 S Range 21 E
4. Well to be drilled 200 ft. from nearest lease line.
5. Drilling Contractor HL Brady Address PAOLA KANS
6. Type of equipment: Rotary  Cable Tool  Approx. date operation to begin Jan 10 1964
7. Well to be drilled for Oil  Gas  Disposal  Input  Estimated Total Depth of Well 200 ft.
8. Depth of deepest fresh water well within one mile of location 25 ft If none exists, write NONE
9. Ground elevation at location is approx. 60? ft. higher or \_\_\_\_\_ ft. lower than ground elevation at water well.
10. Depth of the deepest municipal water well within three miles of location None ft. If none exists, write NONE
11. Operator states that he will set surface pipe at least 25 ft. below all Tertiary or unconsolidated deposits and, taking into consideration differences in ground elevations, that the minimum depth necessary, to the best of his knowledge and belief, to protect all fresh water zones is 250 ft. and operator agrees to set surface pipe at this location to a depth of not less than 650 ft. Alternate 1  Alternate 2

REMARKS:

Signature of Operator Investor's Oil Inc. Caldwell



**State Corporation Commission of Kansas  
Conservation Division  
500 Insurance Building  
212 North Market  
Wichita 2, Kansas**

**RECEIVED**  
STATE CORPORATION COMMISSION

JAN 14 1964

**CONSERVATION DIVISION**  
Wichita, Kansas

**(IF PREFERRED, MAIL IN ENVELOPE)**