

TYPE

NOTICE OF INTENTION TO DRILL

C-1

TO BE FILED WITH THE STATE CORPORATION COMMISSION
PRIOR TO COMMENCEMENT OF WELL

API Number 15-121-20,244-
(For office use only) 00-00

1. Operator REESE ENTERPRISES INC. ²²

Starting Date Sept. 16, 1974

Address P.O. BOX 11598, KANSAS CITY, MO. 64138

County Miami

2. Contractor KENT DRILLING COMPANY

Sec 24 Twp 16 S Rge 21 ^E_W

Address 332 W. 8th St. GARNETT, KANSAS 66032

Spot Location 880 NL- 880 EL

3. Type of Equipment: Rotary Cable Tool

Nearest Lease Line 880 ft.

4. Well to be Drilled for: Oil Gas

Lease Name Caypt

Disposal Input Other

5. Depth of Deepest Fresh Water within 1 mile 20 ft.

6. Depth of Municipal Water Well within 3 miles 20 ft.

7. Depth to Protect all Fresh Water 40 ft.

8. Amount of Surface Casing to be set 300 ft.

9. Alternate No. 1 No. 2

Est. Total Depth 700 ft.

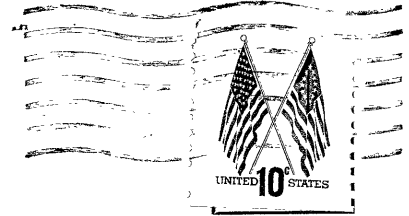
REMARKS:

OPERATOR STATES THAT HE WILL COMPLY WITH K. S. A. 55-128

Signature of Operator

Reese Enterprises Inc.
By Jerry Kent





**State Corporation Commission of Kansas
Conservation Division
P. O. Box 17027
Wichita, Kansas 67217**

**RECEIVED
STATE CORPORATION COMMISSION
09-03-74
SEP 3 1974
CONSERVATION DIVISION
Wichita, Kansas**

(IF PREFERRED, MAIL IN ENVELOPE)