



**IN ALL CASES PLOT THE INTENDED WELL ON THE PLAT BELOW**

Show the relationship to other wells or facilities proposed to be serviced by the intended cathodic borehole. Please show all the wells, existing cathodic boreholes, pipelines or facilities within 1/2 mile of the proposed borehole.

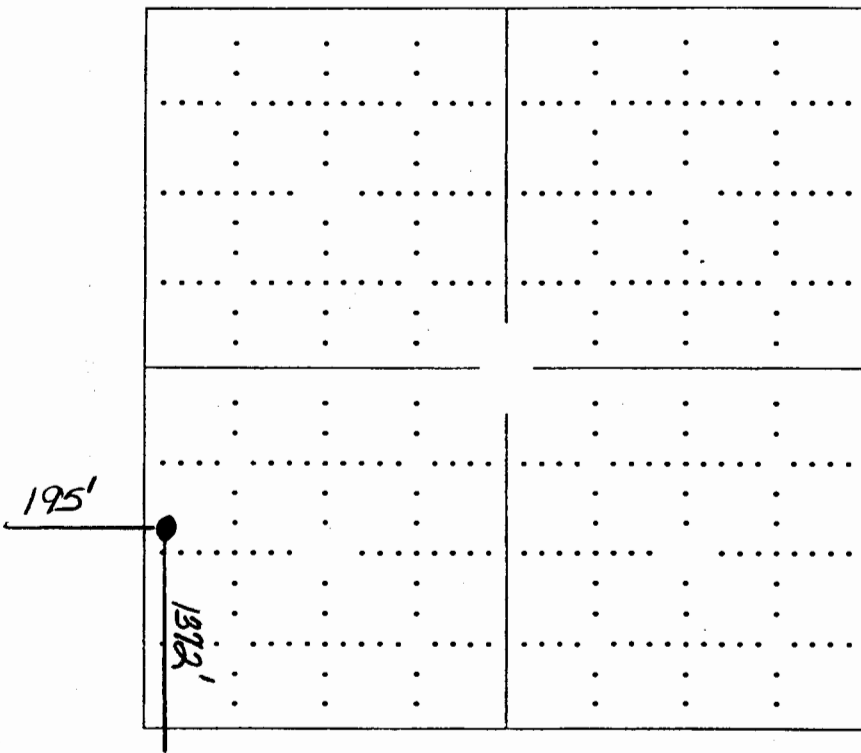
API NO. 15- \_\_\_\_\_  
 OPERATOR Duke Energy Field Services LOCATION OF WELL: COUNTY Seward  
 LEASE IH-12 1372 feet from south/north line of section  
 WELL NUMBER #1 195 feet from east/west line of section  
 FACILITY NAME IH-12 SECTION 1 TWP 33S RG 34W

SPOT: QTR/QTR/QTR/QTR OF ACREAGE \_\_\_\_\_ IS SECTION x REGULAR or \_\_\_\_\_ IRREGULAR  
 \_\_\_\_\_ - SW - NW - SW IF SECTION IS IRREGULAR, LOCATE WELL FROM NEAREST CORNER BOUNDARY.  
 Section corner used: \_\_\_\_\_ NE \_\_\_\_\_ NW \_\_\_\_\_ SE \_\_\_\_\_ SW

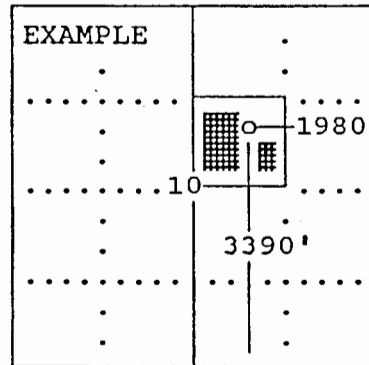
**PLAT**

(Show location of intended cathodic borehole.)

(Show footage from nearest lease, unit or outside section boundary line.)



Section 1



SEWARD CO.

In plotting the proposed location of the well, you must show:

- 1) The manner in which you are using the depicted plat by identifying section lines, i.e. 1 section, 1 section with 8 surrounding sections, 4 sections, etc.;
- 2) the distance of the proposed drilling location from the section's south/north and east/west; and
- 3) the distance to the nearest lease, unit or outside section boundary line

**RECEIVED**  
 KANSAS CORPORATION COMMISSION

OCT 11 2005

CONSERVATION DIVISION  
 WICHITA, KS