

TYPE OR PRINT

NOTICE OF INTENTION TO DRILL

C-1

15-121-20,072-00-00

TO BE FILED WITH THE STATE CORPORATION COMMISSION PRIOR TO COMMENCEMENT OF WELL

Correct. & Location: Operator PARTNERS PRODUCTION CO Address BOX 192 WELLSVILLE, KANSAS

Lease name TARR Well No. 3 County MIAMI

3. Well Location NW 1/4 of SE 1/4 Sec. 19 Township 16S Range 24E 22E

4. Well to be drilled 1500 ft. from nearest lease line.

5. Drilling Contractor ALCO DRILLING Co Address TOLA, KANSAS

6. Type of equipment: Rotary Cable Tool Approx. date operation to begin OCT. 22 1968.

7. Well to be drilled for Oil Gas Disposal Input Estimated Total Depth of Well 250 ft.

8. Depth of deepest fresh water well within one mile of location 30 ft. If none exists, write NONE.

9. Ground elevation at location is approx. SAME ft. higher or SAME ft. lower than ground elevation at water well.

10. Depth of the deepest municipal water well within three miles of location _____ ft. If none exists, write NONE

None

11. Operator states that he will set surface pipe at least 25 ft. below all Tertiary or unconsolidated deposits and, taking into consideration differences in ground elevations, that the minimum depth necessary, to the best of his knowledge and belief, to protect all fresh water zones is 60 ft. and operator agrees to set surface pipe at this location to a depth of not less than

60 ft. Alternate 1 Alternate 2

REMARKS:

Signature of Operator

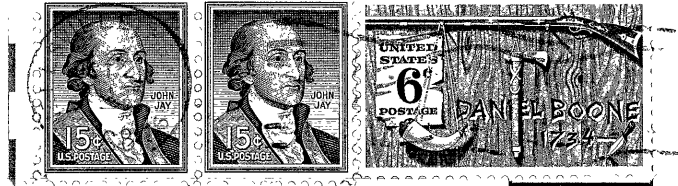
William K De Mucke



RECEIVED
STATE CORPORATION COMMISSION

OCT 22 1968

CONSERVATION DIVISION
Wichita, Kansas



State Corporation Commission of Kansas
Conservation Division
500 Insurance Building
212 North Market
Wichita, Kansas 67202

(IF PREFERRED, MAIL IN ENVELOPE)

