

TYPE

NOTICE OF INTENTION TO DRILL

C-1

TO BE FILED WITH THE STATE CORPORATION COMMISSION
PRIOR TO COMMENCEMENT OF WELL



15-121-20,544
(For office use only) 00-00

1. Operator F. A. Maimer

Starting Date 9-6-77

Address RFD # 1 Paola, Kansas

County Miami

2. Contractor Ernest Lynn

Sec 17 Twp 16 S Rge 22 ^E/_W

Address 208 Tower Paola, Kansas

Spot Location SE. SE. SE.

3. Type of Equipment: Rotary _____ Cable Tool X

Nearest Lease Line 150 ft.

4. Well to be Drilled for: Oil _____ Gas X

Lease Name Maimer

Disposal _____ Input _____ Other _____

5. Depth of Deepest Fresh Water within 1 mile None ft.

6. Depth of Municipal Water Well within 3 miles None ft.

7. Depth to Protect all Fresh Water 200 25' ft.

8. Amount of Surface Casing to be set 25' ft.

Est. Total Depth 400 ft.

9. Alternate No. 1 _____ No. 2 X

REMARKS:

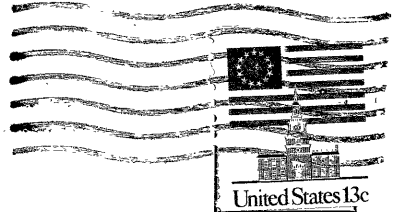
OPERATOR STATES THAT HE WILL COMPLY WITH K. S. A. 55-128

Signature of Operator

Ernest Lynn



Ernest Lynn
Drilling Contractor
208 Tower
Paola, Kansas 66071
(913) 294-3150



State Corporation Commission of Kansas
Conservation Division

P. O. Box 17027

245 N. WATER
WICHITA, KS 67202

STATE CORPORATION COMMISSION
09-12-77
SEP 12 1977
CONSERVATION DIVISION
Wichita, Kansas

(IF PREFERRED, MAIL IN ENVELOPE)