

KANSAS CORPORATION COMMISSION  
OIL & GAS CONSERVATION DIVISION  
WELL PLUGGING APPLICATION  
Please TYPE Form and File ONE Copy

RECEIVED  
OCT 03 2005  
KCC WICHITA

Form CP-1  
September 2003  
This Form must be Typed  
This Form must be Signed  
All blanks must be Filled

API # 15 - 175-21005 - 00-00 (Identifier Number of this well). This must be listed for wells drilled since 1967; if no API # was issued,

indicate original spud or completion date 3/25/88

Well Operator: Marlin Oil Corporation KCC License #: 9228

Address: P.O. Box 14630 City: Oklahoma City

State: Oklahoma Zip Code: 73113 Contact Phone: (405) 478 - 1900

Lease: BOLES Well #: 3-16 Sec. 16 Twp. 35 S. R. 34  East  West

Spot Location / QQQQ County: SW/4 - NW/4 Seward

1980 Feet (in exact footage) From  North /  South (from nearest outside section corner) Line of Section (Not Lease Line)

660 Feet (in exact footage) From  East /  West (from nearest outside section corner) Line of Section (Not Lease Line)

Check One:  Oil Well  Gas Well  D&A  Cathodic  Water Supply Well

SWD Docket # \_\_\_\_\_  ENHR Docket # \_\_\_\_\_  Other: \_\_\_\_\_

Conductor Casing Size: \_\_\_\_\_ Set at: \_\_\_\_\_ Cemented with: \_\_\_\_\_ Sacks

Surface Casing Size: 8-5/8" Set at: 1701' Cemented with: 825 Sacks

Production Casing Size: 4-1/2" Set at: 6796' Cemented with: 275 Sacks

List (ALL) Perforations and Bridgeplug Sets: Perforations: 6404-6410'; 6343-6358'; 6320-6326'. CIBP set at 6335'.

Elevation: 2905/2916' ( G.L. /  K.B.) T.D.: 6800' PBTD: 6335' Anhydrite Depth: +/- 1660', based on offset well.  
(Stone Corral Formation)

Condition of Well:  Good  Poor  Casing Leak  Junk in Hole

Proposed Method of Plugging (attach a separate page if additional space is needed): Set CIBP at 6270' and cap w/ 2sx cement. Load hole with mud. Cut off 4-1/2" csg at +/- 1050'. Place 30 sx cement plug from 660-560' and a 10 sx cement plug from 34-4'. Weld on ID cover plate.

Is Well Log attached to this application as required?  Yes  No Is ACO-1 filed?  Yes  No

If not explain why? \_\_\_\_\_

Plugging of this Well will be done in accordance with K.S.A. 55-101 et. seq. and the Rules and Regulations of the State Corporation Commission.

List Name of Company Representative authorized to be in charge of plugging operations: Dick Lynn

Marlin Oil Corp. Phone: (405) 818 - 8738

Address: P.O. Box 14630 City / State: Oklahoma City, OK. 73113

Plugging Contractor: Orr Enterprises, Inc. KCC License #: 33338

Address: P.O. Box 1706, Duncan, OK. 73534 Phone: (580) 251 - 9618

Proposed Date and Hour of Plugging (if known?): \_\_\_\_\_

Payment of the Plugging Fee (K.A.R. 82-3-118) will be guaranteed by Operator or Agent

Date: 9/30/05 Authorized Operator / Agent: \_\_\_\_\_

  
(Signature)

Mail to: KCC - Conservation Division, 130 S. Market - Room 2078, Wichita, Kansas 67202

12/05

12/05

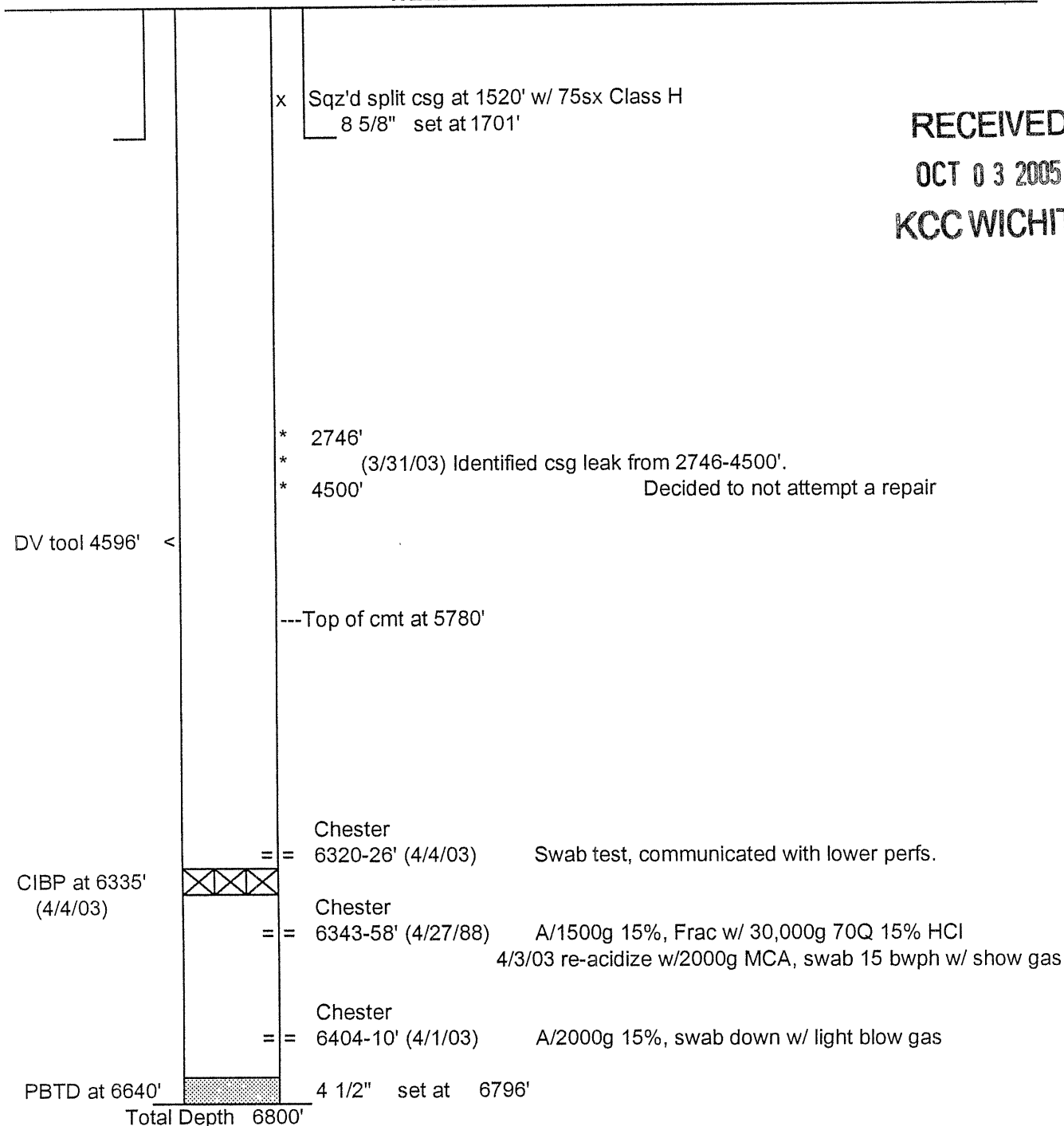
WELL DATA SHEETS

Date: May 14, 2003

Well Name Boles No. 3-16

**WELLBORE SCHEMATIC**

**RECEIVED  
OCT 03 2005  
KCC WICHITA**



Well Site Equipment		Brief Well History	
Tanks (oil)		8/29/88	Initial gas sales, SIP 1400psi, 618 mcf/d
Tanks (sw)	Wellhead only, no other	6/1/91	Tidemark to Comstock Oil&Gas
Prod Unit	surface equipment.	????	Comstock Oil&Gas to Chesapeake
Separator		9/22/01	Pull pkr, swab well, and install plunger lift.
H. Treater		April, 03	Identify csg leak, test Chester at 6404' and 6320'
Pmp Unit			
Prime Mover			
Plunger Lift			
Other			

WELL DATA SHEETS

Date May 14, 2003

API No. 15-175-21005

Well Name Boles No. 3-16

Location SW/4 NW/4 Section 16 - T35S - R34W

County Seward State KS Field \_\_\_\_\_

Elevation GR 2905' KB 2916' Type Well Gas

Total Depth ( Date ) 6800' 04/07/88 PBTD 6713'

Spud Date 03/25/88 Completion Date 04/30/88 First Sales 08/26/88

Surface Casing 8 5/8" 24.0# J-55 ST&C Set at 1701'  
 Cmt'd with 610 sx Pacesetter Lite w/ 6% gel, 2% CC, 1/4 #/sx Top cmt at surface  
flo-seal followed by 215 sx Class H w/ 2%CC.

Production Csg 4 1/2" 11.6# J-55 LT&C Set at 6796'  
 Cmt'd with 1st Stage: 250sx Class H w/ 10% Thixad, 7% salt, Top cmt at 5780'  
.4% CF-2, 1 #/sx Hi-seal. DV Tool at 4596'  
2nd Stage: split csg at 1520' attempting t open DV tool Top cmt at \_\_\_\_\_

Tubing Size \_\_\_\_\_ Jts. Set at \_\_\_\_\_

Packer or Anchor \_\_\_\_\_ Set at \_\_\_\_\_

Rods 1" 7/8" 3/4" 5/8" Pony Rods \_\_\_\_\_

Sub-surface Pump Size & Type \_\_\_\_\_

Formation	Chester	Chester		
Perf'd Intervals	<u>6343-6358'</u>	<u>6320-6326'</u>		
		<u>6404-6410'</u>		

Remarks: NOTE: Split csg at 1520' trying to open DV tool on primary cmt job.  
Note: Could not get through DV tool w/ 20' perforating gun.  
 \_\_\_\_\_  
 \_\_\_\_\_  
 \_\_\_\_\_  
 \_\_\_\_\_  
 \_\_\_\_\_  
 \_\_\_\_\_  
 \_\_\_\_\_

Formation Tops	
Chase	
Council Grove	
Toronto	
Kansas City	
Novinger	
Morrow Shale	5963
Chester	6284
Basal Chester	6565
St. Genevieve	

RECEIVED  
OCT 03 2005  
KCC WICHITA

K&S LIBRARY

Page Marked -  
DURL INDUCTION  
SHORT CURRD  
LOG  
MARLIN OIL CO. FILE  
GEOLOGICAL LOG FILE

COMPANY: TIDENREX EXPLORATION, INC.  
WELL: BOLLES NO. 5915  
FIELD: MIDPENNSYLVANIA  
COUNTY: HANCOCK  
STATE: PA  
LOCALITY: SEWARD  
API NO.: 15-175-21-005  
ELEVATION: 2551 FEET - 4890 FEET  
LOG MEASURED FROM: K. 8. 11 FT. ABOVE PERM. ORIGIN  
LOGGING MEASURED FROM: K. 8. 11 FT. ABOVE PERM. ORIGIN  
LOG NO.: 1000  
DATE: 1998  
LOGGED BY: J. J. HARRIS  
CHECKED BY: J. J. HARRIS  
CORRECTED BY: J. J. HARRIS  
INTERPRETED BY: J. J. HARRIS

Fold Here

Service Ticket No.: 333751 API Serial No.: 15-175-21-005 PGM Version: 1.18  
Change in Mud Type or Additional Samples

Date/Sample No.	Type	Log	Depth	Scale	Scale in Hole	CHANGES
	DIGL					NO CHANGES

Type Fluid: In Hole

Dens.: Visc. :  
pH.: Fluid Loss:

Source of Sample:  
Rm @ Meas. Temp.:  
Ref @ Meas. Temp.:  
Rmc @ Meas. Temp.:  
Source: Rmf/Rmc:

Rm @ BHT: 0.99 @ 140  
Rmf @ BHT: 0.78 @ 140  
Rmc @ BHT: 1.09 @ 140

EQUIPMENT DATA

GAMMA		ACOUSTIC		DENSITY		NEUTRON	
Run No.	ONE	Run No.	ONE	Run No.	ONE	Run No.	ONE
Serial No.	108564	Serial No.	21	Serial No.	108763	Serial No.	108763
Model No.	NGRT-A	Model No.	SDLT-R	Model No.	DBNT-A	Model No.	DBNT-A
Diameter	3.625"	No. of Cent.		Diameter	4.5"	Diameter	3.625"
Detector Model No.	102A-T	Spacing		Log Type	G-G	Log Type	N-N
Type	SCINT			Source Type	CS	Source Type	GM BE
Length	4'	LSA		Serial No.	SDL-850	Serial No.	DBN-352
Distance to Source	N/A	FADA		Strength	1.5 CI	Strength	18.5 CI

LOGGING DATA

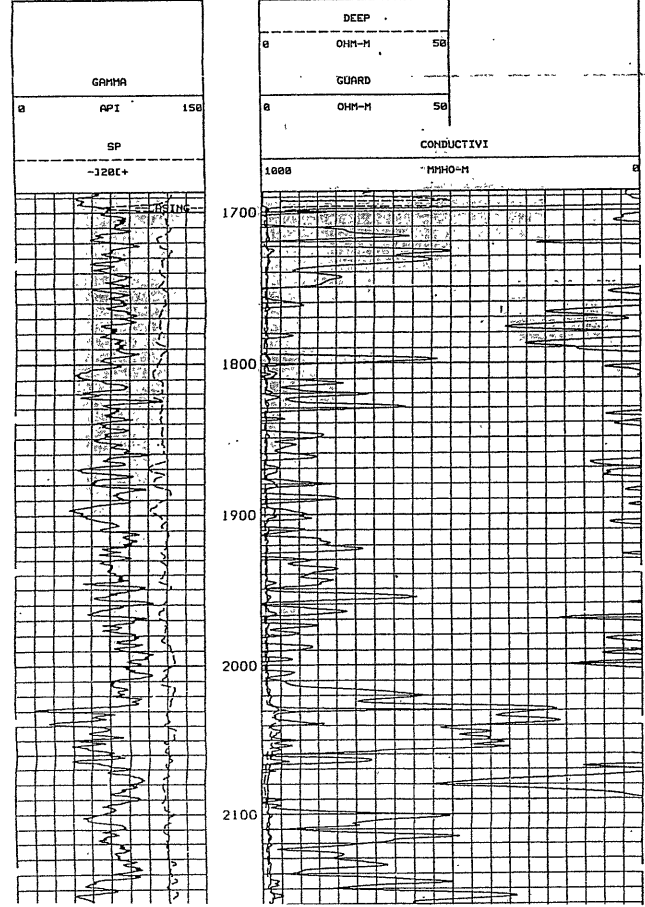
GENERAL		GAMMA		ACOUSTIC		DENSITY		NEUTRON	
Run No.	ONE	Scale	L	Scale	L	Scale	L	Scale	L
Depth	6888	From To	1696	90	0	150	2.0	3.0	2.71
									.38
									-1.16
									L6

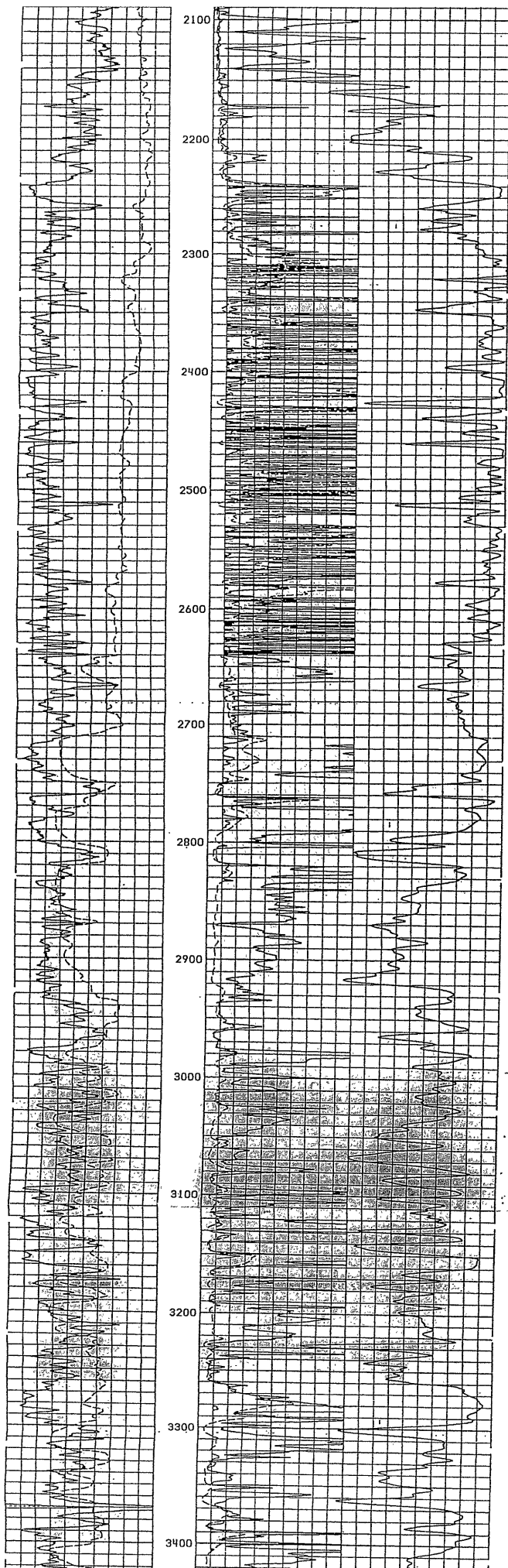
Remarks: YOUR CREW TODAY: MR. REDMAN MR. LEON

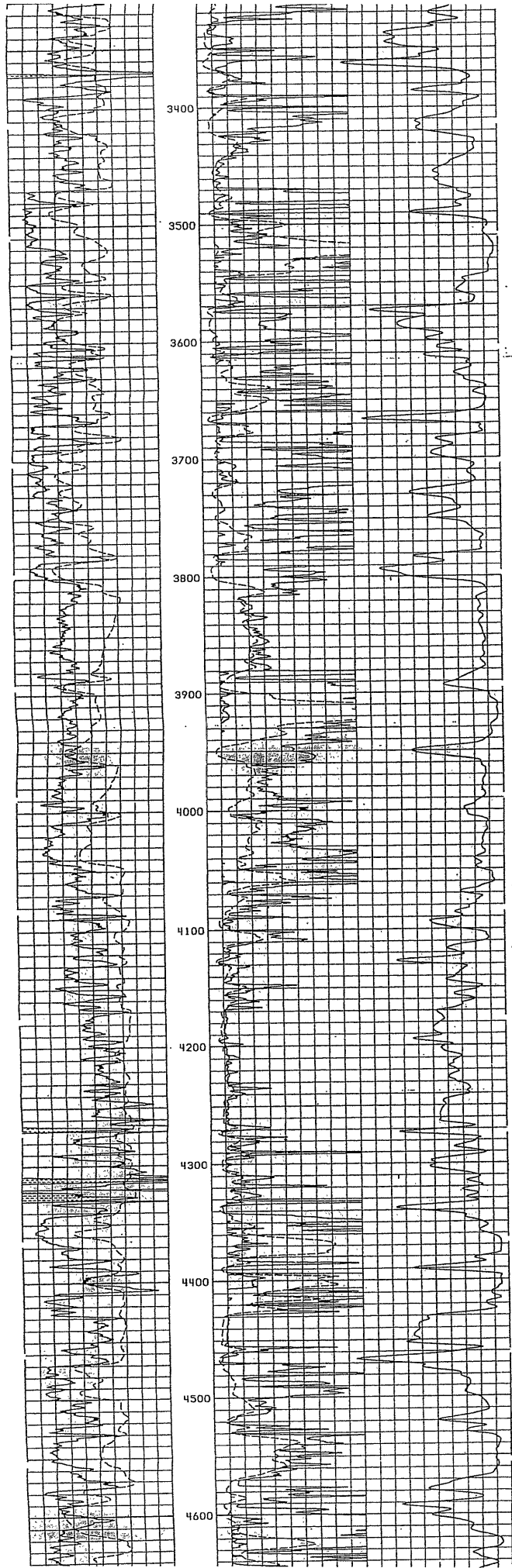
CHLORIDES: 2800

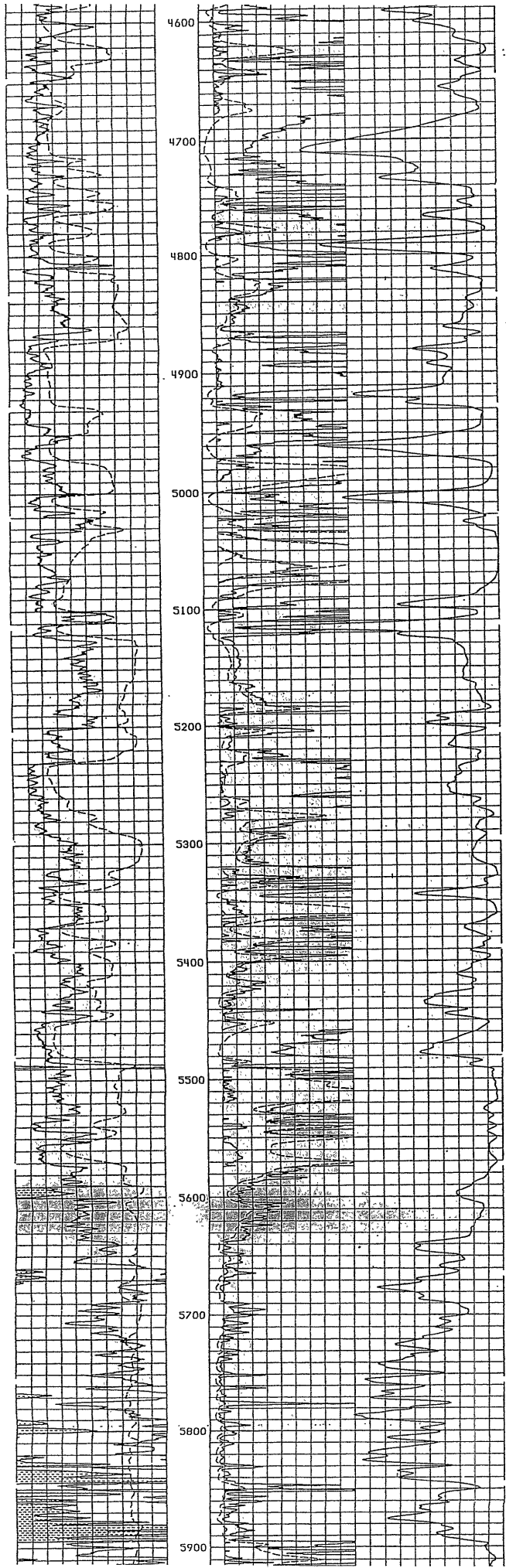
LIBERAL DISTRICT: 315-624-8123 THANK YOU

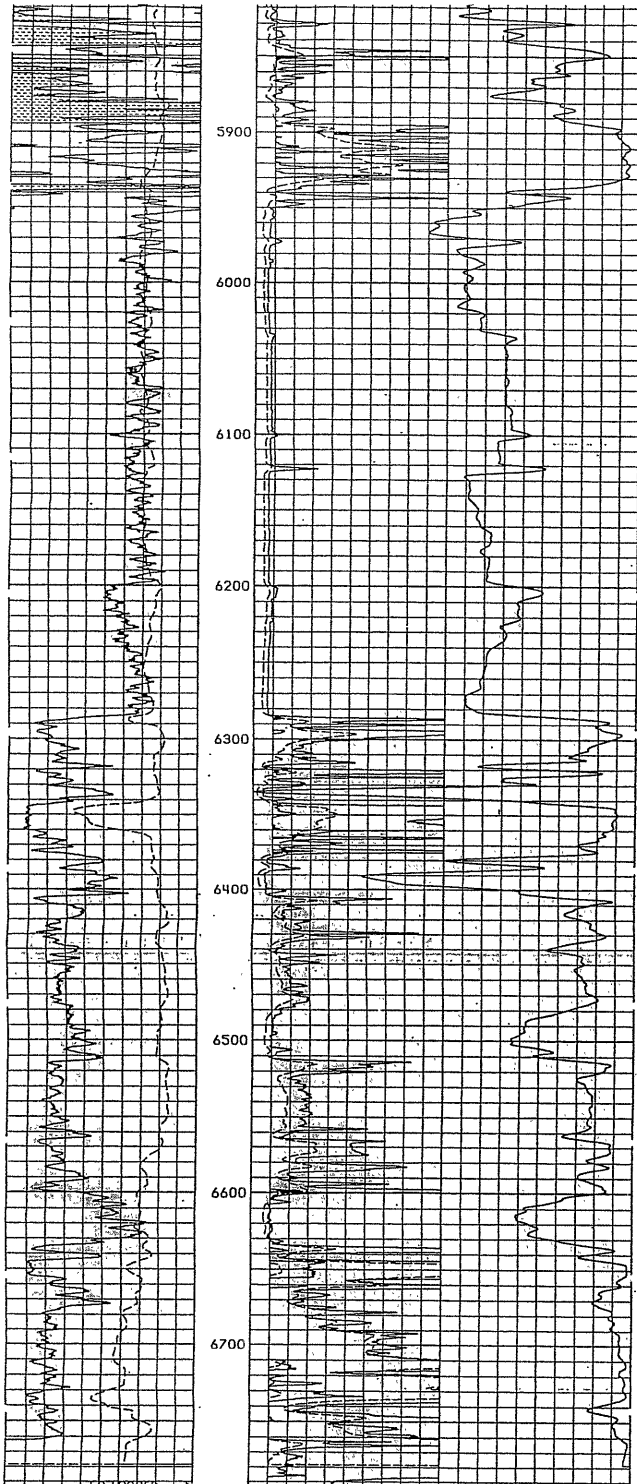
This does not guarantee the accuracy of any interpretation of the data presented at the well or in this report, nor does it constitute an endorsement of any product or service. It is the user's responsibility to ensure that the data is used for the intended purpose and that all necessary safety precautions are followed.











GAHRA		
B	API	150
SP		
-120C+		

DEEP		
B	OHM-M	50
GUARD		
B	OHM-M	50
CONDUCTIVI		
1000	MMHO-M	B

SECTION # 2 Date: 4/ 8/88 Time: 5:17 Version:1.10

RXO/RT		
GAHRA		
B	API	150
SP		
-120C+		
CASING		
1700		

TENSION		
18000 POUNDS		
DEEP		
.2	OHM-M	2000
MEDIUM		
.2	OHM-M	2000
GUARD		
.2	OHM-M	2000



**KGS**Oil and Gas  
Well  
Database**Specific Well--15-175-21005**

Oil &amp; Gas

**Tops Picked****RECEIVED****OCT 03 2005****KCC WICHITA**

This page shows the tops picked for the well you have selected.

<b>Formation (source name)</b>	<b>Top</b>	<b>Base</b>	<b>Source</b>	<b>Updated</b>
Wellington Formation (WLNVTN)	2236		HUG EL-KN-B	Jul-01-2003
Hollenberg Limestone Member (HLLNBR)	2650		HUG EL-KN-B	Jul-01-2003
Chase Group (CHSE GRP)	2676		HUG EL-KN-B	Jul-01-2003
Herington Limestone Member (HRNGTN)	2676		HUG EL-KN-B	Jul-01-2003
Krider Limestone Member (KRIDER)	2712		HUG EL-KN-B	Jul-01-2003
Odell Shale Formation (ODELL)	2750		HUG EL-KN-B	Jul-01-2003
Winfield Limestone Formation (WINF)	2761		HUG EL-KN-B	Jul-01-2003
Gage Shale Member (GAGE)	2806		HUG EL-KN-B	Jul-01-2003
Towanda Limestone Member (TWND)	2817	2869	HUG EL-KN-B	Jul-01-2003
Fort Riley Limestone Member (FTRLY)	2872	2914	HUG EL-KN-B	Jul-01-2003
Florence Limestone Member (FLRNC)	2914		HUG EL-KN-B	Jul-01-2003
Matfield Shale Formation (MATFIELD)	2959		HUG EL-KN-B	Jul-01-2003
Wreford Limestone Formation (WREFORD)	2975		HUG EL-KN-B	Jul-01-2003
Speiser Shale Formation (A1 SH)	3012		HUG EL-KN-B	Jul-01-2003
Council Grove Group (CGRV GRP)	3012		HUG EL-KN-B	Jul-01-2003
Funston Formation (A1 LM)	3024		HUG EL-KN-B	Jul-01-2003
Blue Rapids Shale Formation (B1 SH)	3090		HUG EL-KN-B	Jul-01-2003
Crouse Limestone Formation (B1 LM)	3094		HUG EL-KN-B	Jul-01-2003
Easley Creek Shale Formation (B2 SH)	3110		HUG EL-KN-B	Jul-01-2003
Middleburg Limestone Member				

(B2 LM)	3120		HUG EL-KN-B	Jul-01-2003
Hooser Shale Member (B3 SH)	3139		HUG EL-KN-B	Jul-01-2003
Eiss Limestone Member (B3 LM)	3148		HUG EL-KN-B	Jul-01-2003
Stearns Shale Formation (B4 SH)	3162		HUG EL-KN-B	Jul-01-2003
Morrill Limestone Member (B4 LM)	3168		HUG EL-KN-B	Jul-01-2003
Florena Shale Member (B5 SH)	3183		HUG EL-KN-B	Jul-01-2003
Cottonwood Limestone Member (B5 LM)	3191		HUG EL-KN-B	Jul-01-2003
Eskridge Shale Formation (C SH)	3210		HUG EL-KN-B	Jul-01-2003
Neva Limestone Member (C LM)	3270		HUG EL-KN-B	Jul-01-2003
Roca Shale Formation (D SH)	3329		HUG EL-KN-B	Jul-01-2003
Howe Limestone Member (D LM)	3351		HUG EL-KN-B	Jul-01-2003
Johnson Shale Formation (E SH)	3369		HUG EL-KN-B	Jul-01-2003
Long Creek Limestone Member (E LM)	3388		HUG EL-KN-B	Jul-01-2003
Wabaunsee Group (WBNS GRP)	3469		HUG EL-KN-B	Jul-01-2003
Wabaunsee Group (WBNS U)	3469		HUG EL-KN-B	Jul-01-2003
Wabaunsee Group (2WBNS)	3547		HUG EL-KN-B	Jul-01-2003
Root Shale Formation (ROOT SH)	3667		HUG EL-KN-B	Jul-01-2003
Stotler Limestone Formation (STOTLER)	3667		HUG EL-KN-B	Jul-01-2003
Shawnee Group (SHWN GRP)	3889		HUG EL-KN-B	Jul-01-2003
Topeka Limestone Formation (TPKA)	3889		HUG EL-KN-B	Jul-01-2003
Heebner Shale Member (HBNR SH)	4321		HUG EL-KN-B	Jul-01-2003
Toronto Limestone Member (TRNT)	4341		HUG EL-KN-B	Jul-01-2003
Iatan Limestone Member (F/LNSG)	4406		HUG EL-KN-B	Jul-01-2003
Lansing Group				

(LANS GRP)	4467		HUG EL-KN-B	Jul-01-2003
Iola Limestone Formation (IOLA)	4712		HUG EL-KN-B	Jul-01-2003
Muncie Creek Shale Member (MNCRK)	4754		HUG EL-KN-B	Jul-01-2003
DRUM (DRUM)	4762		HUG EL-KN-B	Jul-01-2003
Stark Shale Member (STRK SH)	5029		HUG EL-KN-B	Jul-01-2003
Swope Limestone Formation (SWOPE)	5033		HUG EL-KN-B	Jul-01-2003
Mound City Shale Member (3D HSHALE)	5122		HUG EL-KN-B	Jul-01-2003
Marmaton Group (MRMNT GRP)	5229		HUG EL-KN-B	Jul-01-2003
Altamont Limestone Formation (MRM B)	5279		HUG EL-KN-B	Jul-01-2003
Pawnee Limestone Formation (MRM C)	5321		HUG EL-KN-B	Jul-01-2003
Fort Scott Limestone Formation (D MRMN)	5367		HUG EL-KN-B	Jul-01-2003
Little Osage Shale Member (LOSG)	5486		HUG EL-KN-B	Jul-01-2003
Cherokee Group (CHRK GRP)	5590		HUG EL-KN-B	Jul-01-2003
Excello Shale Member (EXCELLO)	5590		HUG EL-KN-B	Jul-01-2003
Atokan Stage (ATKN GRP)	5845		HUG EL-KN-B	Jul-01-2003
Atoka Shale Bed (ATOKA SH)	5853		HUG EL-KN-B	Jul-01-2003
Middle Morrowan Limestone Bed (B-P/LM)	5936		ELOG-BO	Sep-06-2000
Middle Morrowan Limestone Bed (B-P/LM)	5950		HUG EL-KN-B	Jul-01-2003
Upper Kearny Member (MRRW GRP)	5950		HUG EL-KN-B	Jul-01-2003
Chesteran Stage (CHST GRP)	6284		ELOG-BO	Sep-06-2000
Chesteran Zone D Bed (CHST DZN)	6284		ELOG-BO	Sep-06-2000
Mississippian System (MISS SYS)	6284		ELOG-BO	Sep-06-2000
Middle Morrowan Limestone Bed (M MRW LM)	6285		HUG EL-KN-B	Jul-01-2003
Chesteran Zone C Bed				

(CHST CZN)	6285	6404	HUG EL-KN-B	Jul-01-2003
Mississippian System (MISS SYS)	6285		HUG EL-KN-B	Jul-01-2003
Chesteran Zone B Bed (CHST BZN)	6404	6513	HUG EL-KN-B	Jul-01-2003
Chesteran Zone A Bed (CHST AZN)	6513	6674	HUG EL-KN-B	Jul-01-2003
Chesteran Zone B Bed (CHST SDL B)	6565		ELOG-BO	Sep-06-2000
Ste. Genevieve Limestone Formation (WSTGN)	6644		HUG EL-KN-B	Jul-01-2003
Meramecian Stage (MRMC)	6674		HUG EL-KN-B	Jul-01-2003
Ste. Genevieve Limestone Formation (STGN)	6674		HUG EL-KN-B	Jul-01-2003
Chesteran Zone A Bed (CHST LM)			HUG EL-KN-B	Jul-01-2003

[Back to main well page...](#)

[Kansas Geological Survey, Oil and Gas Well Database](#)

Comments to [webadmin@kgs.ku.edu](mailto:webadmin@kgs.ku.edu)

URL=<http://www.kgs.ku.edu/Magellan/Qualified/index.html>

Well Display Programs Updated Aug. 2003. Data added continuously.

# KANSAS

CORPORATION COMMISSION

Kathleen Sebelius, Governor    Brian J. Moline, Chair    Robert E. Krehbiel, Commissioner    Michael C. Moffet, Commissioner

## NOTICE OF RECEIPT OF WELL PLUGGING APPLICATION (CP-1)

Marlin Oil Corporation  
PO Box 14630  
Oklahoma City, OK 73113-0630

October 06, 2005

Re: BOLES #3-16  
API 15-175-21005-00-00  
SWNW 16-35S-34W, 1980 FNL 660 FWL  
SEWARD COUNTY, KANSAS

Dear Operator:

This letter is to notify you that the Conservation Division is in receipt of your plugging proposal, form CP-1, for the above-captioned well.

Your CP-1 has been reviewed by the Conservation Division central office for completeness and to verify license numbers. The plugging proposal will now be forwarded to the district office listed below for review of your proposed method of plugging.

**Please contact the district office for approval of your proposed plugging method at least five (5) days before plugging the well, pursuant to K.A.R. 82-3-113 (b). If a workover pit will be used during the plugging of the well it must be permitted. A CDP-1 form must be filed and approved prior to the use of the pit.**

The Conservation Division's review of form CP-1, either in the central or district office, does not include an inquiry into well ownership or the filing operator's legal right to plug the well.

**This notice in no way constitutes authorization to plug the above-captioned well by persons not having legal rights of ownership or interest in the well. This notice is void after ninety (90) days from the above date.**

District: #1  
210 E Frontview, Suite A  
Dodge City, KS 67801  
(620) 225-8888

Sincerely



David P. Williams  
Production Supervisor