

15-163-01106-00-00

WELL PLUGGING RECORD

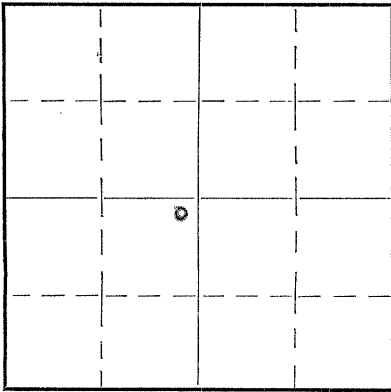
OR

FORMATION PLUGGING RECORD

Strike out upper line when reporting plugging of formations.

Give All Information Completely
Make Required Affidavit
Mail or Deliver Report to:
Conservation Division
State Corporation Commission
800 Biting Building
Wichita, Kansas

NORTH



Locate well correctly on above Section Plat

Location as "NE $\frac{1}{4}$ NW $\frac{1}{4}$ SW $\frac{1}{4}$ " or footage from lines NE SW 26-7-17-W
 County. 26 Twp. 7 Rge. 17 (E) W (W)
 Lease Owner Snowden & McSweeney Company
 Lease Name E. C. Stebbins Well No. 1
 Office Address 1106 Sinclair Building, Fort Worth, Texas.
 Character of Well (Completed as Oil, Gas or Dry Hole) Oil
 Date, well completed August 20, 193 6
 Application for plugging filed April 29, 1934
 Application for plugging approved April 29, 1934
 Plugging Commenced May 14, 1934
 Plugging Completed May 28, 1934
 Reason for abandonment of well or producing formation Unprofitable operation.
 If a producing well is abandoned, date of last production March 4, 1934
 Was permission obtained from the Conservation Division or its agents before plugging was commenced? Yes

Name of Conservation Agent who supervised plugging of this well C. T. Alexander.
 Producing formation Lime Depth to top 2920 Bottom 2973 Total Depth of Well 2973 Feet.
 Show depth and thickness of all water, oil and gas formations. Plugged back to 2815'

OIL, GAS OR WATER RECORDS

CASING RECORD

Formation	Content	From	To	Size	Put In	Pulled Out
Lime	Water	220	360	20"	30'	None
Lime	Show Oil	2630	2673	15 $\frac{1}{2}$ "	380'	None
Lime	Show Oil	2775	2845	12 $\frac{1}{2}$ "	1130'	86'
Lime	Oil	2880	2900	8 $\frac{1}{2}$ "	2630'	2402'
Lime	Oil	2920	3002	6 5/8"	189' L	None

Describe in detail the manner in which the well was plugged, indicating where the mud fluid was placed and the method or methods used in introducing it into the hole. If cement or other plugs were used, state the character of same and depth placed, from _____ feet to _____ feet for each plug set.

Total depth 2815'

Mudded from 2815' to 2635' - mud dumped.

Cement from 2635' to 2600' - 10 sacks - with dump bailer.

Mudded from 2600' to 1130' - mud dumped.

Set wood plug at 1130' and used rock to bridge.

drove solid with tools at 1125'.

Mudded from 1125' to 380' - mud dumped.

12 $\frac{1}{2}$ " casing ripped at 374' and 160 sacks cement pumped in

by Halliburton Oil Cementing Co, leaving 46' cement in casing.

From above condition well leaked 1 gallon water per hour.

Moved back machine, ripped off 12 $\frac{1}{2}$ " casing at 85' and pulled same.

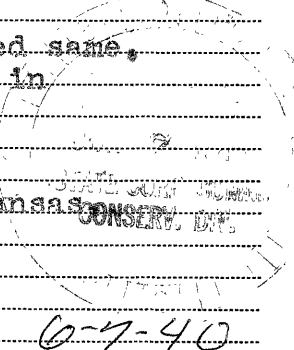
Mudded from 380' to 6' and cemented from 6' to cellar base in

15 $\frac{1}{2}$ " casing with 9 sacks cement.

Cellar filled up to surface of ground.

Plugging work done by General Oil Tool Company, Wichita, Kansas.

PLUGGING
FILE NO. 26-7-17W
BOOK 101 LINE 3



(If additional description is necessary, use BACK of this sheet)

Correspondence regarding this well should be addressed to Snowden & McSweeney Company,
 Address 1106 Sinclair Building, Fort Worth, Texas.

STATE OF Texas COUNTY OF Tarrant, ss.
C. D. Fletcher (employee of owner) or ~~owner or operator~~ of the above-described well,
 being first duly sworn on oath, says: That I have knowledge of the facts, statements, and matters herein contained and the log of the above-described well as filed and that the same are true and correct. So help me God.

(Signature) [Signature]

Fort Worth, Texas
(Address)

SUBSCRIBED AND SWORN TO before me this JUN 6 - 1940 day of _____, 1940.

My commission expires June 1 - 1941
[Signature] Notary Public.
 Tarrant County, Texas.

15-163-01106-0000

SNOWDEN & MCSWEENEY COMPANY

LOG OF WELL NUMBER 1, E. C. STEBBINS FARM
 SW $\frac{1}{4}$ OF SEC. 26 - 7S- 17W, ROOKS COUNTY, KANSAS
 CONTRACTOR: R. E. HESS
 DRILLING COMMENCED: MAY 20, 1936
 DRILLING COMPLETED: AUGUST 20, 1936
 INITIAL PRODUCTION: PUMPING FIRST 24 HRS. 300 BBLS OF
 WATER; 35 BBLS OF OIL; SECOND 24 HRS. 140 BBLS OF WATER
 30 BBLS OF OIL.

CASING RECORD

<u>Size</u>	<u>Put In</u>	<u>Left In</u>	<u>Pulled</u>
20" Surface Pipe	30'	30'	
15 $\frac{1}{2}$ " Csg.	380'	380'	
12 $\frac{1}{2}$ " "	1130'	1130'	
10" "	1528' 8"	-----	1528' 8"
8" "	2989' 2"	2630' 2"	
6 5/8" "	3520'	-----	3520'
6 5/8" Liner put in		188-11"	

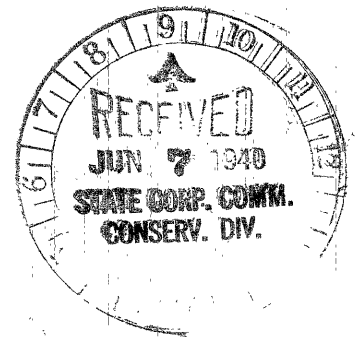
8" Raised up to 2630' and cemented by Halliburton Oil Well Cementing Co., with 175 bags of cement.

15 bags of baroid; 100 bags of aquagel and mud pumped between 15 $\frac{1}{2}$ " casing and 12 $\frac{1}{2}$ " casing to plug off artesian water flow. Pumped in by Halliburton high pressure pump.

<u>FORMATION</u>	<u>FROM</u>	<u>TO</u>
Soil	0	5
Gravel	5	15
Lime	15	20
Shale	20	205
Lime	205	220
Shale	220	360
Gray sand	360	380
Artesian shale - water	380	390
Sand	390	500
Red shale	500	510
Blue shale	510	560
White sand	560	565
Lime	565	580
Blue shale	580	590
Lime and iron	590	600
White sand	600	620
Blue shale	620	625
Gray sand	625	640
Lime	640	655
Soft shale	655	660
Gray sand	660	670

PLUGGING
 FILE SEC. 26-7-R-174
 BOOK PAGE 101 LINE 3

Hole full of water.

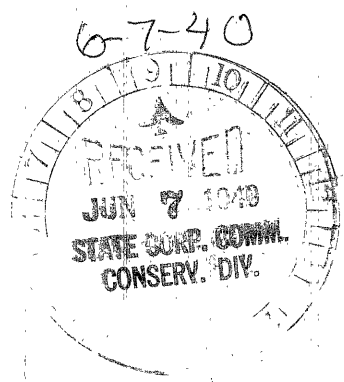


6-7-40

13-163-01106-00-00

FORMATION	FROM	TO
Blue shale	670	675
Sand & iron	675	700
Sandy shale	700	715
Red sand	715	735
Red shale	735	745
Red sand	745	830
Red shale	830	1130
Anhydrite	1130	1150
Blue shale	1150	1160
Gray sand	1160	1165
Red shale	1165	1250
Blue shale	1250	1260
Red shale	1260	1350
Blue shale	1350	1523
White lime	1523	1526
Red shale	1526	1540
Shale and shells	1540	1585
White lime	1585	1595
Blue shale	1595	1605
Red shale	1605	1610
White lime	1610	1640
Blue shale	1640	1645
Red shale	1645	1675
White lime	1675	1690
Blue shale	1690	1705
Red shale	1705	1735
White lime	1735	1800
Shale and shells	1800	1815
White lime	1815	1855
Blue shale	1855	1860
White lime	1860	1880
Blue shale	1880	1885
White lime	1885	1915
Blue shale	1915	1925
White lime	1925	1930
Red shale	1930	1935
White lime	1935	1940
Red shale	1940	1950
White lime	1950	1970
Red shale	1970	1985
White lime	1985	2000
Blue shale	2000	2010
White lime	2010	2045
Red shale	2045	2065
White lime	2065	2080
Blue shale	2080	2085
White lime	2085	2110
Blue shale	2110	2120
White lime	2120	2140
Blue shale	2140	2145
White lime	2145	2150
Blue shale	2150	2165
White lime	2165	2180
Blue shale	2180	2195
White lime	2195	2210
Blue shale	2210	2220
White lime	2220	2240

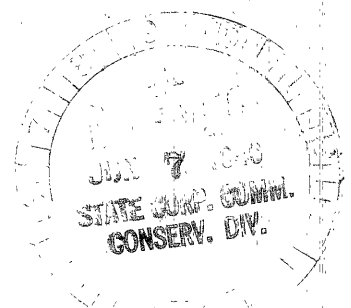
PLUGGING
FILE SEC. 26T-7R-170
BOOK PAGE 10 LINE 3



15-163-01106-0000

FORMATION	FROM	TO	
Blue shale	2240	2250	
White lime	2250	2260	
Red shale	2260	2270	
Blue shale	2270	2285	
White lime	2285	2295	
Blue shale	2295	2345	
Shale & shells	2345	2360	
Blue shale	2360	2450	
White lime	2450	2465	
Blue shale	2465	2485	
White lime	2485	2520	
Shale	2520	2525	
White lime	2525	2550	
Blue shale	2550	2575	
White lime	2575	2585	
Blue shale	2585	2600	
White lime	2600	2605	
Blue shale	2605	2630	
Lime (Topeka) white	2630	2673	Show of oil @2650
Blue shale	2673	2675	
White lime	2675	2720	
Blue shale	2720	2735	
Red shale	2735	2737	
White lime	2737	2765	
Blue shale	2765	2775	
White lime	2775	2845	Show of oil at 2780
Blue shale	2845	2865	
White lime	2865	2870	
Red shale	2870	2880	
White lime (K.C.)	2880	2900	Show of oil at 2965
Shale and shells	2900	2920	
White lime	2920	3002	Show of oil at 2990
Hole full of water at 2970			
Black shale	3002	3005	
White lime	3005	3007	
Dark shale	3007	3010	
White lime	3010	3027	
Black shale	3027	3037	
White lime	3037	3050	
Gray shale	3050	3052	
White lime	3052	3075	
Black shale	3075	3080	
White lime	3080	3100	
Blue shale	3100	3105	
White lime	3105	3120	
Blue shale	3120	3142	
Red shale	3142	3157	
White lime	3157	3175	
Blue shale	3175	3178	
White lime	3178	3200	
Red shale	3200	3208	
4 Ebbles of water at 3219			
White lime H.F.W.	3208	3221	
Lime H.F.W.	3221	3578	
Sand	3578	3582	
Granite	3582	3595	Total Depth

PLUGGING
FILE SEC. 26-7-R-174
BOOK PAGE 101 LINE 3



6-7-40

15-163-01106-00-00

<u>FORMATION</u>	<u>FROM</u>	<u>TO</u>
Total Depth	3595	
Plugged back	3595	2973

Acidized 3 pays - 1500 gallons of acid from 2950 to 2960 & plugged back to 2790.

Acidized with 2000 gallons - 2780 to 2790; plugged back to 2660.

Acidized with 3000 gallons and cleaned out to 2973, which acid had eaten through the lower pay.

Plugged back with rock, lead wool, cement and lead plug to 2815.

Work done by contractor - day work.

PLANNING
FILE NO. 26 7 R 174
BOOK PAGE 101 LINE 3



6-7-40