

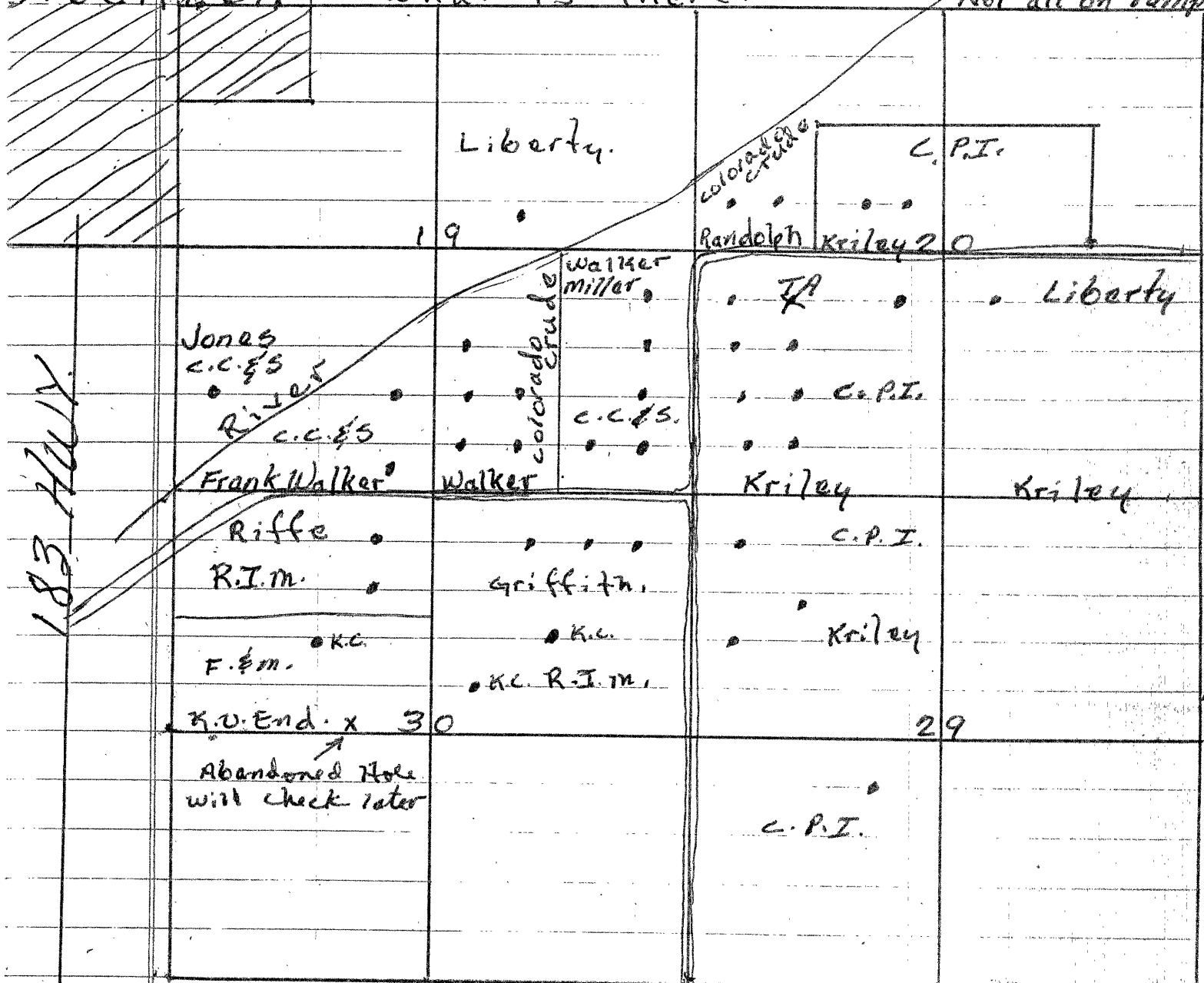
City of Stockton 1-18
 15-163-21933-01-00

TOM.

Here is a preliminary map to give you an idea what is there.

STOCKTON

Not all on Pump



c.c. & S. - Chaben, Cory & Scott.

Prod. Kenney Vohige Hays.

Leroy Berland Plainville.

colorado crude - Operated by c.c. & S.

C.P.I. - Columbia Pet. Inc.

Prod. Carl Barns Hays. 913 628 2095.

Prod. Eric Waddell Natoma 913 895 4497

Liberty R. Comeau Plainville.

R.I.M. Myrlin Monroe Plainville

F. & M. Prod. Preston Burkley Russell

RECEIVED
 STATE COOPERATION COMMISSION

JAN 20 1982

REGULATORY DIVISION
 Wichita, Kansas