

FORM MUST BE TYPED
FORM C-1 4/90

EFFECTIVE DATE: 7-20-91

State of Kansas

FORM MUST BE SIGNED
ALL BLANKS MUST BE FILLED

NOTICE OF INTENTION TO DRILL

Must be approved by the K.C.C. five (5) days prior to commencing well

Expected Spud Date ... July ... 15 ... 1991 ...
month day year

77' West
C-E/2-NE-NW Sec 19, Twp ..7.. S, Rg ..17 X West

OPERATOR: License # 7076
Name: Black Diamond Oil, Inc.
Address: 3004 Broadway Ave.
City/State/Zip: Hays, Kansas 67601
Contact Person: Kenneth Vehige
Phone: 913 625-5891

4620' feet from South line of Section
3047 feet from East line of Section
(Note: Locate well on Section Plat on Reverse Side)

CONTRACTOR: License #: 8241
Name: Emphasis Oil

County: Rooks
Lease Name: Wehrli Well #: 2
Field Name: Riffe

Well Drilled For: Well Class: Type Equipment:
... Oil ... Inj X. Infield X. ~~Mock~~ Rotary
... Gas ... Storage ... Pool Ext. ... Air Rotary
X. OWWO X. Disposal ... Wildcat ... Cable
... Seismic; ... # of Holes

Is this a Prorated Field? yes X. no
Target Formation(s): ARBUCKLE
Nearest lease or unit boundary: 330'
Ground Surface Elevation: 1760' feet MSL
Domestic well within 330 feet: ... yes X. no
Municipal well within one mile: ... yes X. no
Depth to bottom of fresh water: 180'
Depth to bottom of usable water: 500'
Surface Pipe by Alternate: X. 1 ... 2
Length of Surface Pipe ~~Planned to be~~ set: 8.5/8" @ .1224
Length of Conductor pipe ~~required~~: 13.3/8" @ .98'
Projected Total Depth: 3315' 5 1/2" @ 3314'
Formation at Total Depth: Arbuckle
Water Source for Drilling Operations:
... well ... farm pond X. other

If OWWO: old well information as follows: #15-163-21,739
Operator: C.C. & S. Oil Operations
Well Name: DWJ #1
Comp. Date: 8/24/82 Old Total Depth 3315'

DWR Permit #: N/A
Will Cores Be Taken?: ... yes X. no
If yes, proposed zone:

Directional, Deviated or Horizontal wellbore? ... yes ... X no
If yes, total depth location:

AFFIDAVIT

The undersigned hereby affirms that the drilling, completion and eventual plugging of this well will comply with K.S.A. 55-101, et. seq.

It is agreed that the following minimum requirements will be met:

1. The appropriate district office shall be notified before setting surface pipe;
2. The minimum amount of surface pipe as specified above shall be set by circulating cement to the top; in all cases surface pipe shall be set through all unconsolidated materials plus a minimum of 20 feet into the underlying formation;
3. If the well is dry, a plugging proposal shall be submitted to the district office. An agreement between the operator and the district office on plug length and placement is necessary prior to plugging;
4. The appropriate district office will be notified before well is either plugged or production casing is cemented in;
5. If an Alternate II completion, production pipe shall be cemented from below any usable water to surface within 120 days of spud date. In all cases, notify district office prior to any cementing.

I hereby certify that the statements made herein are true and to the best of my knowledge and belief.

Date: 7/8/91 Signature of Operator or Agent: [Signature] Title: Owner/Operator

FOR KCC USE:

API # 15- 163-21 739-00-01
Conductor pipe required 90 feet
Minimum surface pipe required 580 feet per Alt. (1) 2
Approved by: MWJ 7-15-91
EFFECTIVE DATE: 7-20-91
This authorization expires: 1-15-92
(This authorization void if drilling not started within 6 months of effective date.)
Spud date: _____ Agent: _____

RECEIVED
STATE CORPORATION COMMISSION

JUL 09 1991

CONSERVATION DIVISION
Wichita, Kansas

RECEIVED
STATE CORPORATION COMMISSION

JUL 15 1991

CONSERVATION DIVISION
Wichita, Kansas

Mail to: Conservation Division, 200 Colorado Derby Building, 202 W. First St., Wichita, Kansas 67202-1286.

REMEMBER TO:

- File Drill Pit Application (form CDP-1) with Intent to Drill;
- File Completion Form ACO-1 within 120 days of spud date;
- File acreage attribution plat according to field proration orders;
- Notify appropriate district office 48 hours prior to workover or re-entry;
- Submit plugging report (CP-4) after plugging is completed;
- Obtain written approval before disposing or injecting salt water.

19
2
1200

Does Not Apply for disposal Well

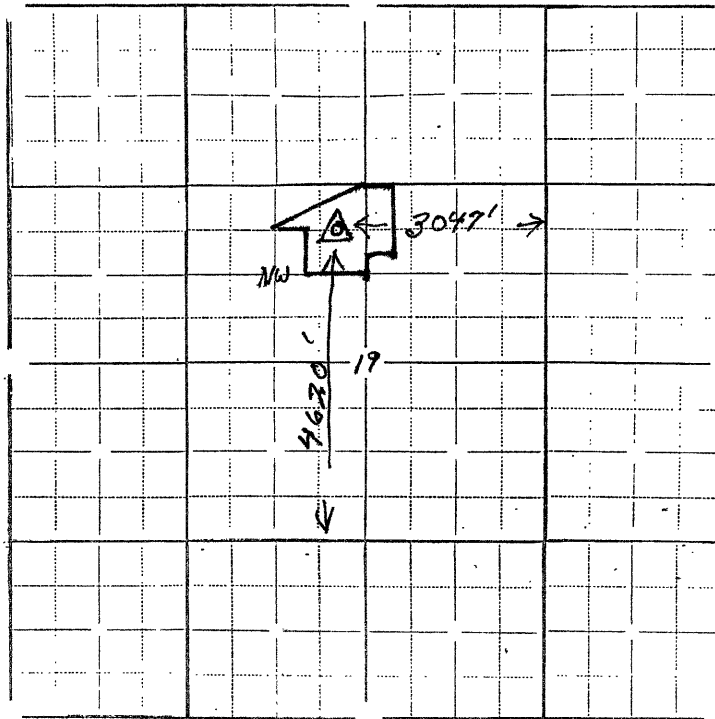
PLAT OF ACREAGE ATTRIBUTABLE TO A WELL

State Corporation Commission, Conservation Division
200 Colorado Derby Bldg. Wichita, Kansas 67202

OPERATOR Black Diamond Oil, Inc. LOCATION OF WELL:
LEASE Wehrli 4620 feet north of SE corner
WELL NUMBER #2 3047 feet west of SE corner
FIELD Riffe Ext. NW/4 Sec. 19 T 7 R 17 ~~E/W~~
COUNTY Rooks
NO. OF ACRES ATTRIBUTABLE TO WELL 0 IS SECTION X REGULAR IRREGULAR?
DESCRIPTION OF ACREAGE C-E/2 NE NW IF IRREGULAR, LOCATE WELL FROM NEAREST
CORNER BOUNDARY.

NOTE: If plat depicted is insufficient for your circumstances, you may attach your own scaled or surveyed plat.

PLAT



In plotting the proposed location of the well, you must show:

- 1) The manner in which you are using the depicted plat by identifying section lines, i.e. 1 section, 1 section with 8 surrounding partial sections, 4 sections, 16 sections, etc.;
- 2) the well's location relative to the location of other wells producing from the same common source of supply in adjoining drilling units, pursuant to K.A.R. 82-3-108, 82-3-207, 82-3-312, or special orders of the Commission; *SWD Well !!*
- 3) the distance of the proposed drilling location from the section's east and south lines; and
- 4) the distance to the nearest lease or unit boundary line. *330'*

I hereby certify that the statements made herein are true and to the best of my knowledge and belief.

Signature of Operator or Agent *Richard Wehrli*
Date 7/11/91 Title President