

SIDE ONE

Two (2) copies of this form shall be filed with the Kansas Corporation Commission, 200 Colorado Derby Building, Wichita, Kansas 67202, within thirty (30) days after the completion of a well, regardless of how the well was completed.

Attach separate letter of request if the information is to be held confidential. If confidential, only file one copy. Information on Side One will be of public record and Side Two will then be held confidential.

Applications must be made on dual completion, commingling, salt water disposal, injection and temporarily abandoned wells.

Attach one copy only wireline logs (i.e. electrical log, sonic log, gamma ray neutron log, etc.). (Rules 82-2-105 & 82-2-125) KCC# (316) 263-3238.

LICENSE # 7076 EXPIRATION DATE June, 1983

OPERATOR Black Diamond Oil, Inc. API NO. 15-163,21,893 -00-00

ADDRESS 217 E. 32nd, Suite 'A' COUNTY Rooks

Hays, Ks. 67601 FIELD Riffe

** CONTACT PERSON Kenneth Vehige PROD. FORMATION -----

PHONE 913 625-5891

PURCHASER NONE LEASE Dix

ADDRESS WELL NO. 2

WELL LOCATION NW NE NW

DRILLING Emphasis Oil Operations 2310 Ft. from South Line and

CONTRACTOR CONTRACTOR ADDRESS P. O. Box 506 1605 Ft. from West Line of

Russell, Ks. 67665 the NW (Qtr.) SEC 25 TWP 7S RGE 18W.

PLUGGING Same as above

CONTRACTOR CONTRACTOR ADDRESS

TOTAL DEPTH 3300 PBTD

SPUD DATE 12/05/82 DATE COMPLETED 12/14/82

ELEV: GR 1757 DF 1760 KB 1762

DRILLED WITH (CABLE) (ROTARY) (AIR) TOOLS.

DOCKET NO. OF DISPOSAL OR REPRESSURING WELL BEING USED TO DISPOSE OF WATER FROM THIS LEASE

Amount of surface pipe set and cemented 1197' DV Tool Used? NO

THIS AFFIDAVIT APPLIES TO: (Circle ONE) - Oil, Gas, Shut-in Gas, Dry Disposal, Injection, Temporarily Abandoned, OWWO. Other

ALL REQUIREMENTS OF THE STATUTES, RULES AND REGULATIONS PROMULGATED TO REGULATE THE OIL AND GAS INDUSTRY HAVE BEEN FULLY COMPLIED WITH.

WELL PLAT

(Office Use Only)

KCC ✓
KGS ✓
SWD/REP ✓
PLG. ✓

A F F I D A V I T

Kenneth Vehige, being of lawful age, hereby certifies that:

I am the Affiant, and I am familiar with the contents of the foregoing Affidavit. The statements and allegations contained therein are true and correct.

Kenneth Vehige
(Name) Kenneth Vehige

SUBSCRIBED AND SWORN TO BEFORE ME this 31st day of March 19 83.



MY COMMISSION EXPIRES: 8-11-85

Robin K. McDowell
(NOTARY PUBLIC)
Robin K. McDowell

** The person who can be reached by phone regarding any questions concerning this information.

RECEIVED
STATE CORPORATION COMMISSION

APR 05 1983

4-5-83

CONSERVATION DIVISION
Wichita, Kansas

OPERATOR Black Diamond Oil, Inc. LEASE Dix #2 SEC. 25 TWP. 7 RGE. 18

FILL IN WELL LOG AS REQUIRED:

Show all important zones of porosity and contents thereof; cored intervals, and all drill-stem tests, including depth interval tested, cushion used, time tool open, flowing and shut-in pressures, and recoveries.

SHOW GEOLOGICAL MARKERS, LOGS RUN, OR OTHER DESCRIPTIVE INFORMATION.

FORMATION DESCRIPTION, CONTENTS, ETC.	TOP	BOTTOM	NAME	DEPTH
Topsoil & Sand	30'			
Sand & Shale	343'			
Shale	682'			
Sand & Shale	893'			
Shale	1182'			
Anhydrite	1235'			
Shale	1590'			
Sand & Shale	2815'			
Shale & Lime	3000'			
Lime (RTD)	3300'			

Report of all strings set — surface, intermediate, production, etc. **CASING RECORD** (New) or (Used)

Purpose of string	Size hole drilled	Size casing set (in O.D.)	Weight lbs/ft.	Setting depth	Type cement	Sacks	Type and percent additives
Conductor	17"	13 3/8"	54	89'	Common	85	2% gel, 3% cc
Surface	12 1/4"	8 5/8"	24	1197'	Common	225	2% gel, 3% cc

LINER RECORD

PERFORATION RECORD

Top, ft.	Bottom, ft.	Sacks cement	Shots per ft.	Size & type	Depth interval

Size	Setting depth	Packer set at

ACID, FRACTURE, SHOT, CEMENT SQUEEZE RECORD

Amount and kind of material used	Depth interval treated

Date of first production	Producing method (flowing, pumping, gas lift, etc.)	Gravity
RATE OF PRODUCTION PER 24 HOURS	Oil bbls.	Gas MCF
	Water %	Gas-oil ratio bbls. CFPB
Disposition of gas (vented, used on lease or sold)		Perforations

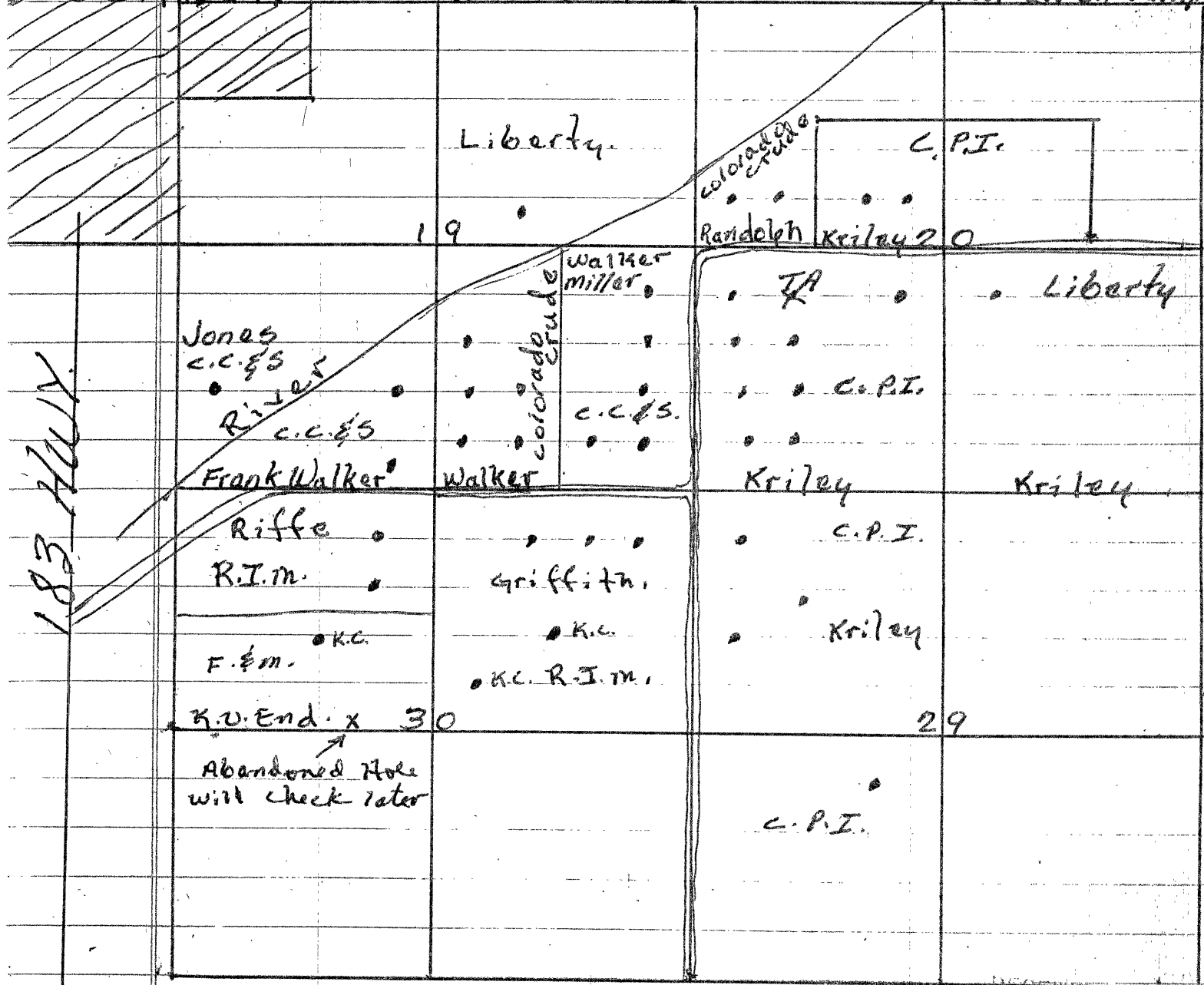
TOM.

15-163-21893-00-00

Here is a preliminary map to give you an idea what is there.

STOCKTON

Not all on Pump



c.c. & S. - Chaban, Cory & Scott

Prod. Kenney Vohige Hays.

Leroy Berland Plainville.

colorado crude - Operated by c.c. & S

C.P.I. Columbia Pet. Inc.

Prod. Carl Barns Hays. 913 628 2095

Prod. Eric Waddell Natoma 913 395 4497

Liberty R. Comeau Plainville.

R.I.M. Myrlin Monroe Plainville

F. & M. Prod. Preston Burkley Russell

RECEIVED
STATE CORPORATION COMMISSION

JAN 26 1982

CONSERVATION DIVISION
Wichita Kansas