

STATE CORPORATION COMMISSION OF KANSAS
OIL & GAS CONSERVATION DIVISION
WELL COMPLETION OR RECOMPLETION FORM
ACO-1 WELL HISTORY
DESCRIPTION OF WELL AND LEASE

API NO. 15-163-23,026-00-00
County Rooks
Sec. 6 Twp. 7S Rge. 20
Elevation: Ground 2203' KB 2208'

Operator: License # 4767
Name Ritchie Exploration, Inc.
Address 125 N. Market, Suite 1000
Wichita, KS 67202
City/State/Zip
Purchaser Koch Oil Company
Wichita, KS

Operator Contact Person J. Christian
Phone 316/267-4375

Contractor: License # 6033
Name Murfin Drilling Co.

Wellsite Geologist Bob Mathiesen
Phone 316/267-4375

Designate Type of Completion
 New Well Re-Entry Workover
 Oil SWD Temp Abd
 Gas Inj Delayed Comp.
 Dry Other (Core, Water Supply etc.)

If ONWO: old well, info as follows:
Operator
Well Name
Comp. Date Old Total Depth

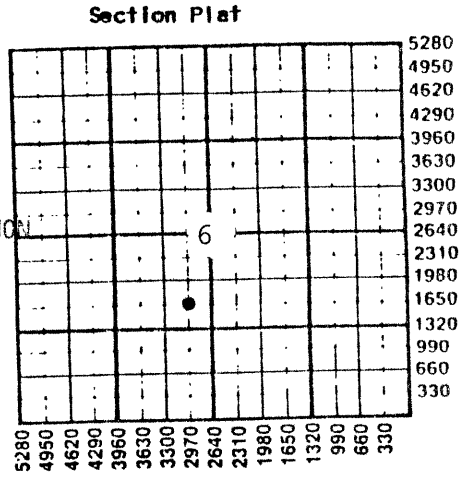
WELL HISTORY

Drilling Method:
 Mud Rotary Air Rotary Cable
11/10/88 11/17/88 12/06/88
Spud Date Date Reached TD Completion Date
3720' n/a
Total Depth PBDT

Amount of Surface Pipe Set and Cemented at 212 feet
Multiple Stage Cementing Collar Used? Yes No
If yes, show depth set 1785 feet
If alternate 2 completion, cement circulated from 1785 feet depth to surface 300x cmt
Cement Company Name Allied Cementing Co.
Invoice # 52991
2-13-89

PLEASE KEEP THIS INFORMATION CONFIDENTIAL RECEIVED

02-08-1989
CONSERVATION DIVISION
Wichita Kansas



WATER SUPPLY INFORMATION
Disposition of Produced Water: Disposal Repressuring
Docket # D-25,274

Questions on this portion of the ACO-1 call:
Water Resources Board (913) 296-3717
Source of Water: Hauled.
Division of Water Resources Permit #
Groundwater.....Ft North from Southeast Corner (Well)Ft West from Southeast Corner of Sec Twp Rge East West
Surface Water.....Ft North from Southeast Corner (Stream, pond etc).....Ft West from Southeast Corner Sec Twp Rge East West
Other (explain).....
(purchased from city, R.W.D. #)

INSTRUCTIONS: This form shall be completed in triplicate and filed with the Kansas Corporation Commission, 200 Colorado Derby Building, Wichita, Kansas 67202, within 120 days of the spud date of any well. Rule 82-3-130, 82-3-107 and 82-3-106 apply. Information on side two of this form will be held confidential for a period of 12 months if requested in writing and submitted with the form. See rule 82-3-107 for confidentiality in excess of 12 months. One copy of all wireline logs and drillers time log shall be attached with this form. Submit CP-4 form with all plugged wells. Submit CP-111 form with all temporarily abandoned wells.

All requirements of the statutes, rules and regulations promulgated to regulate the oil and gas industry have been fully complied with and the statements herein are complete and correct to the best of my knowledge.

Signature [Signature]
Title Vice President Date Feb. 6, 1989

Subscribed and sworn to before me this 6th day of February 1989.
Notary Public Linda K. Rice
Date Commission Expires 6/07/92



K.C.C. OFFICE USE ONLY
 Letter of Confidentiality Attached
 Wireline Log Received
 Drillers Time Log Received
Distribution
 KCC SWD/Rep NGPA
 KGS Plug Other (Specify)
2889 X 4
Form ACO-1 (5-86)

Sec. 6, Twp. 7, Rge. 20

(B)
(W)

OPERATOR Ritchie Exploration, Inc. LEASE NAME #3 R.V. Jones

SEC. 6 TWP. 7S RGE. 20

FILL IN WELL LOG AS REQUIRED:

Show all important zones of porosity and contents thereof; cored intervals, and all drill-stem tests, including depth interval tested, cushion used, time tool open, flowing and shut-in pressures, and recoveries.

SHOW GEOLOGICAL MARKERS, LOGS RUN, OR OTHER DESCRIPTIVE INFORMATION.

FORMATION DESCRIPTION, CONTENTS, ETC.	TOP	BOTTOM	NAME	DEPTH
DST #5 3539'-3605' (Lansing 140'-180' zones). Recovered 6" of free oil and 4½' of oil cut mud. IFP:95-95#/45"; ISIP:275#/60"; FFP:95-95#/45"; FSIP:137#/60".				RELEASED MAR 07 1990
DST #6 3669'-3682' (Arbuckle). Rec. 2' of free oil and 3' of heavy oil cut mud. IFP:84-84#/45"; ISIP:127#/60"; FFP:84-84#/45"; FSIP:95#/60".				FROM CONFIDENTIAL
DST #7 3682'-3697' (Arbuckle). Rec. 5' of oil cut mud (35% oil, 65% mud). IFP:74-74#/30"; ISIP:95#/30"; FFP:74-74#/30"; FSIP:74#/30".				PLEASE KEEP THIS INFORMATION CONFIDENTIAL

RECEIVED
STATE CORPORATION COMMISSION

FED
CONSERVATION DIVISION
WICHITA, KANSAS