

SIDE ONE

STATE CORPORATION COMMISSION OF KANSAS
OIL & GAS CONSERVATION DIVISION
WELL COMPLETION OR RECOMPLETION FORM
ACO-1 WELL HISTORY
DESCRIPTION OF WELL AND LEASE

Operator: License # 6875
Name Marmik Oil Co.
Address 200 N. Jefferson #500
City/State/Zip El Dorado, AR 71730

Purchaser

Operator Contact Person Curtis G. Morrill
Phone 501-862-8546

Contractor: License # 5422
Name Abercrombie Drilling, Inc.

Wellsite Geologist Curtis G. Morrill
Phone 501-862-8546

Designate Type of Completion
 New Well Re-Entry Workover
 Oil SWD Temp Abd
 Gas Inj Delayed Comp.
 Dry Other (Core, Water Supply etc.)
If ~~OWO~~ old well info as follows:

Operator
Well Name
Comp. Date Old Total Depth

WELL HISTORY

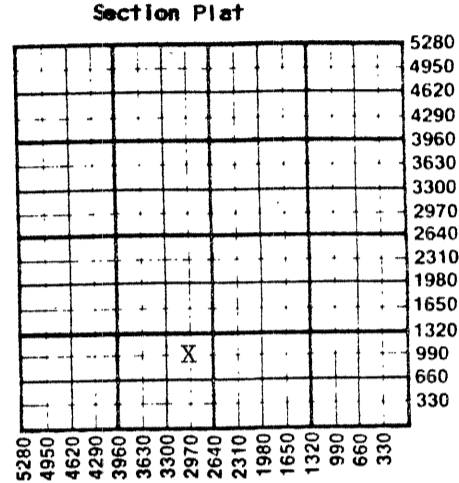
Drilling Method:
 Mud Rotary Air Rotary Cable
8-6-87 8-11-87 8-12-87
Spud Date Date Reached TD Completion Date
3794
Total Depth PBTD

Amount of Surface Pipe Set and Cemented at 220 feet
Multiple Stage Cementing Collar Used? Yes No
If yes, show depth set feet
If alternate 2 completion, cement circulated from feet depth to w/ SX cmt
Cement Company Name
Invoice #

API NO. 15-065-22-395-00-00
County Graham
NE SE SW Sec. 3 Twp. 7S Rge. 21 East West

990 Ft North from Southeast Corner of Section
2970 Ft West from Southeast Corner of Section
(Note: Locate well in section plat below)

Lease Name Lorena Well # 1
Field Name
Producing Formation
Elevation: Ground 2166 KB 2171



WATER SUPPLY INFORMATION
Disposition of Produced Water: Disposal
Docket # Repressuring

Questions on this portion of the ACO-1 call:
Water Resources Board (913) 296-3717
Source of Water:
Division of Water Resources Permit #
 Groundwater 300 Ft North from Southeast Corner
100 Ft West from Southeast Corner of
Sec 33 Twp 6 Rge 21 East West
 Surface Water Ft North from Southeast Corner
Ft West from Southeast Corner
Sec Twp Rge East West
 Other (explain) Eldon Billips
(purchased from city, R.W.D. #)

INSTRUCTIONS: This form shall be completed in triplicate and filed with the Kansas Corporation Commission, 200 Colorado Derby Building, Wichita, Kansas 67202, within 120 days of the spud date of any well. Rule 82-3-130, 82-3-107 and 82-3-106 apply. Information on side two of this form will be held confidential for a period of 12 months if requested in writing and submitted with the form. See rule 82-3-107 for confidentiality in excess of 12 months. One copy of all wireline logs and drillers time log shall be attached with this form. Submit CP-4 form with all plugged wells. Submit CP-111 form with all temporarily abandoned wells.

All requirements of the statutes, rules and regulations promulgated to regulate the oil and gas industry have been fully complied with and the statements herein are complete and correct to the best of my knowledge.

Signature Curtis G. Morrill
Title Geologist Date 8/18/87

Subscribed and sworn to before me this 18 day of August 1987
Notary Public Kay B. Risor
Date Commission Expires Union County, Arkansas
My Commission Expires Feb. 1, 1991

K.C.C. OFFICE USE ONLY
F Letter of Confidentiality Attached
C Wireline Log Received
C Drillers Timelog Received
Distribution
 KCC SWD/Rep NGPA
 KGS Plug Other
(Specify)
RECEIVED
STATE CORPORATION COMMISSION
AUG 24 1987

Sec. 3 Twp. 7 Rge. 21

SIDE TWO

Operator Name Marmik Oil Company Lease Name Lorena Well # 1

Sec. 3 Twp. 7S Rge. 21 East West County Graham

WELL LOG

INSTRUCTIONS: Show important tops and base of formations penetrated. Detail all cores. Report all drill stem tests giving interval tested, time tool open and closed, flowing and shut-in pressures, whether shut-in pressure reached static level, hydrostatic pressures, bottom hole temperature, fluid recovery, and flow rates if gas to surface during test. Attach extra sheet if more space is needed. Attach copy of log.

Drill Stem Tests Taken Yes No
 Samples Sent to Geological Survey Yes No
 Cores Taken Yes No

Formation Description
 Log Sample

DST #1 3373-3407 15-45-15-30 Rec 5' OSM
 IFP 32-32# FFP 42-42#, SIP 1206-1153#

 DST #2 3407-3454 15-45-60-60 Rec 77' WM,
 517' SW, IFP 64-106#, FFP 160-299#,
 SIP 1163-1120#

 DST #3 12-15 Rec 2227' SW IFP 1101-1118#,
 SIP 1153#

Name	Top	Bottom
Anhydrite	1803	
Heebner	3381	
Toronto	3401	
Lansing	3414	
BKC	3610	
Arbuckle	3690	
Granite	3792	

CASING RECORD <input checked="" type="checkbox"/> New <input type="checkbox"/> Used							
Report all strings set-conductor, surface, intermediate, production, etc.							
Purpose of String	Size Hole Drilled	Size Casing Set (in O.D.)	Weight Lbs/Ft.	Setting Depth	Type of Cement	#Sacks Used	Type and Percent Additives
Surface	12 1/4	8 5/8	20	220	Common	140	2% gel 3% cc

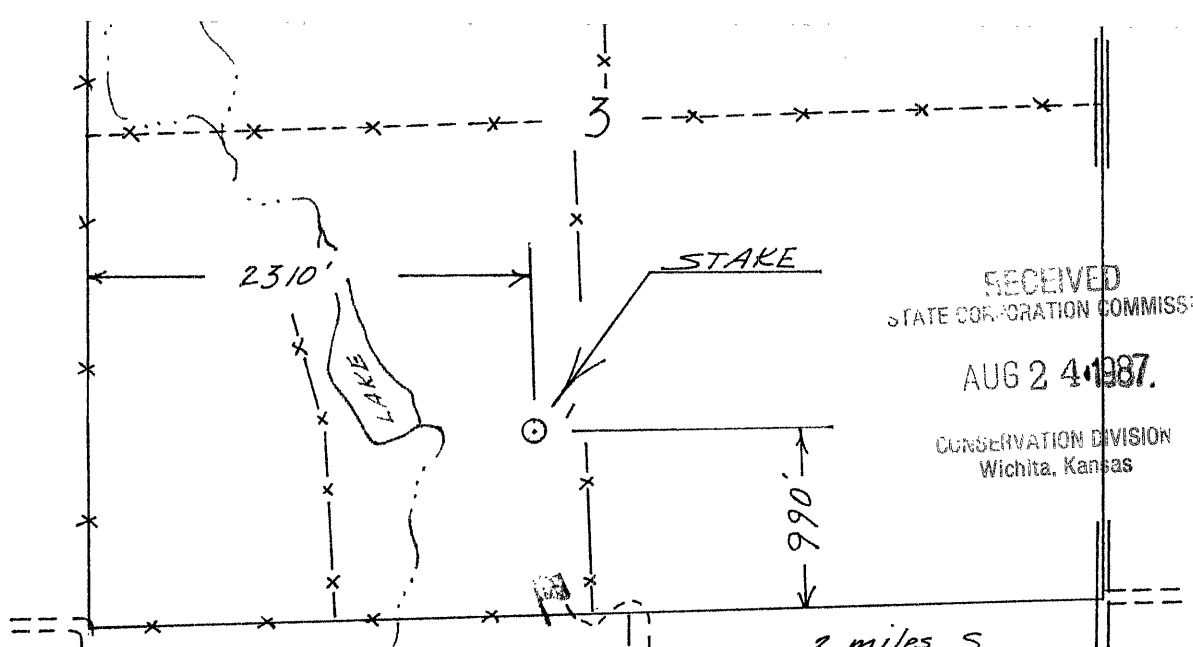
PERFORATION RECORD		Acid, Fracture, Shot, Cement Squeeze Record	
Shots Per Foot	Specify Footage of Each Interval Perforated	(Amount and Kind of Material Used)	Depth

TUBING RECORD	Size	Set At	Packer at	Liner Run	<input type="checkbox"/> Yes <input type="checkbox"/> No

Date of First Production	Producing Method				
	<input type="checkbox"/> Flowing <input type="checkbox"/> Pumping <input type="checkbox"/> Gas Lift <input type="checkbox"/> Other (explain).....				
	Oil	Gas	Water	Gas-Oil Ratio	Gravity
Estimated Production Per 24 Hours	Bbls	MCF	Bbls	CFPB	

METHOD OF COMPLETION Production Interval

Disposition of gas: Vented Open Hole Perforation
 Sold Other (Specify)
 Used on Lease Dually Completed
 Commingled





LAUGHLIN-SIMMONS & CO. OF KANSAS, INC.

OIL FIELD SURVEYING
1337 NORTH MERIDIAN, SUITE 2 (316) 943-5351
WICHITA, KANSAS 67203

KW720874
INVOICE NO.

MARMIK OIL COMPANY

OPERATOR

1

NO.

Lorena

FARM

Graham

COUNTY

3 7s 21w

S

T

R

NE SE SW

LOCATION

ELEVATION: 2166 gr

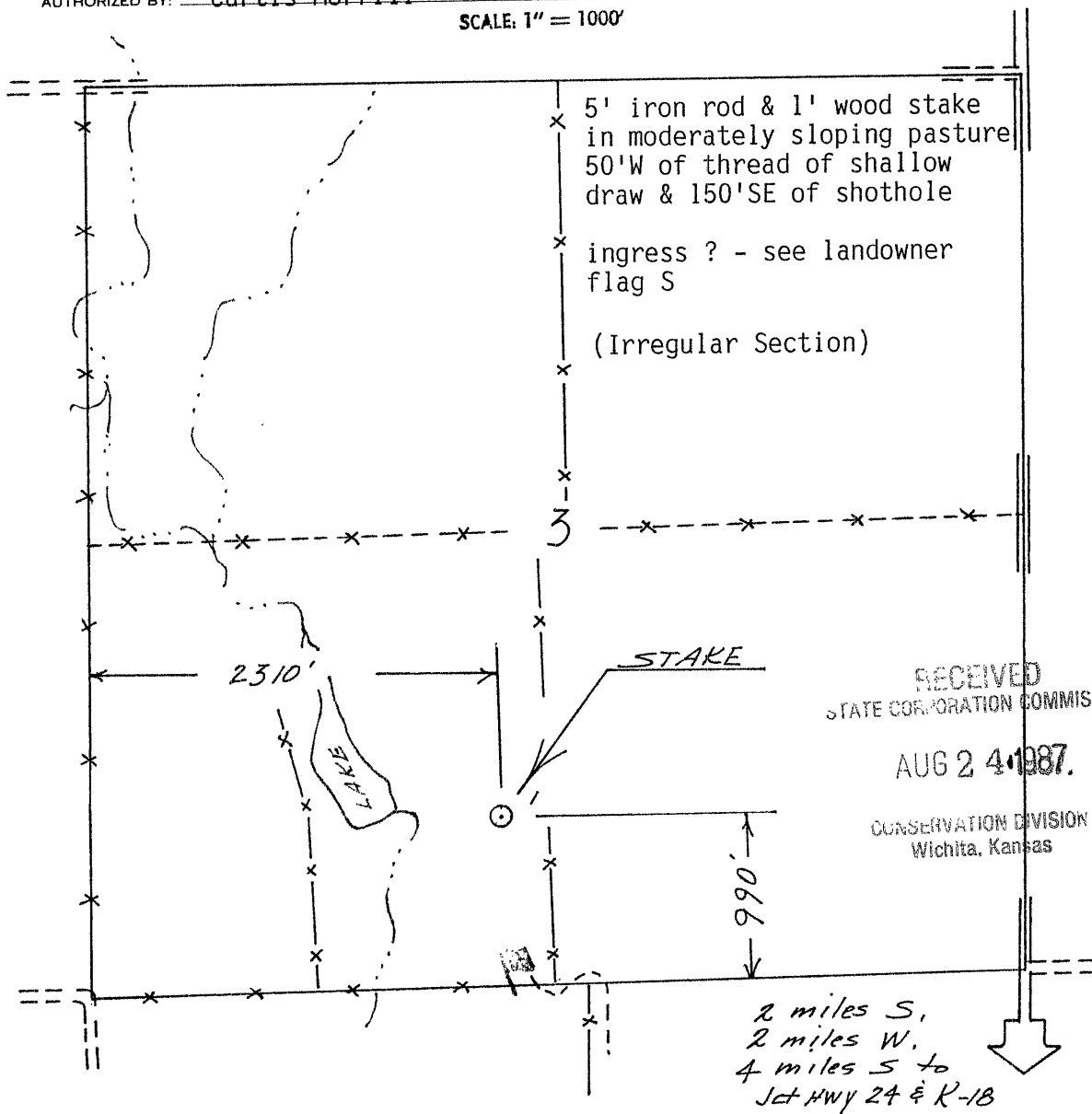


MARMIK OIL COMPANY
200 N. Jefferson Suite 500
El Dorado, Arkansas 71730

15-065-22395-00-00

AUTHORIZED BY: Curtis Morrill

SCALE: 1" = 1000'



TRILOBITE TESTING COMPANY

P.O. Box 362 • Hays, Kansas 67601

Drill-Stem Test Data

15-065-22395-00-00

Well Name & No. Lorena #1 Test No. 1 Date 8-9-87
Company Marmik Oil Company Zone Tested Toronto
Address 200 N. Jefferson #500, Eldorado, Ar. Elevation _____
Co. Rep./Geo. Curt Morrill cont. Abercrombie #4 Est. Ft. of Pay _____
Location: Sec. 3 Twp. 7s Rge. 21w Co. Graham State Ks.

Interval Tested 3372-3407 Drill Pipe Size 4 1/2" XH
Anchor Length 35" Top Choke — 1" _____
Top Packer Depth 3367 Bottom Choke — 3/4" _____
Bottom Packer Depth 3372 Hole Size — 7/8" _____
Total Depth 3407 Rubber Size — 6 3/4" _____
Wt. Pipe I.D. — 2.7 _____ Ft. Run 382
Drill Collar — 2.25 _____ Ft. Run _____
Mud Wt. 9.5 lb./gal. Viscosity 45 Filtrate 8
Tool Open @ 8:33 Initial Blow Weak, steady 1/4"

Final Blow no blow

Recovery — Total Feet 5" Flush Tool? no

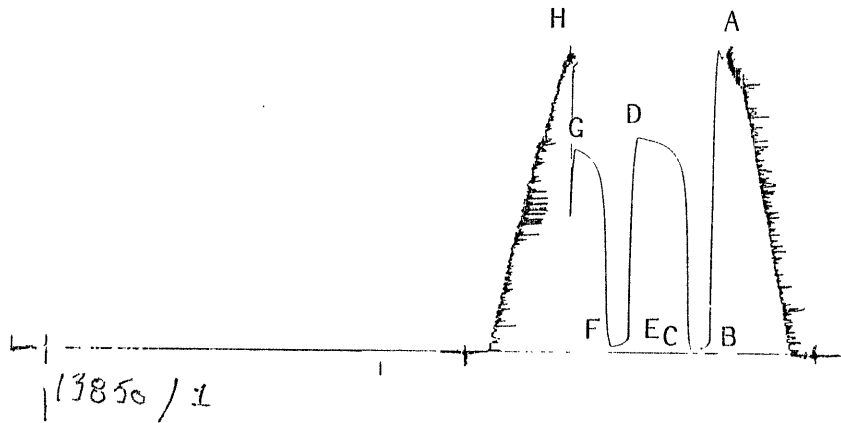
Rec. 5" Feet of Drilling mud oil specks in tool, none in recovery
Rec. _____ Feet of _____
Rec. _____ Feet of _____
Rec. _____ Feet of _____
Rec. _____ Feet of _____

BHT 102 °F Gravity _____ °API @ _____ °F Corrected Gravity _____ °API
RW _____ @ _____ °F Chlorides 2000 ppm Recovery Chlorides 2000 ppm System

(A) Initial Hydrostatic Mud 1706.7 PSI AK1 Recorder No. 13580 Range _____
(B) First Initial Flow Pressure 20.3 PSI @ (depth) 3399 w/Clock No. _____
(C) First Final Flow Pressure 20.3 PSI AK1 Recorder No. 13581 Range _____
(D) Initial Shut-In Pressure 1202.6 PSI @ (depth) 3404 w/Clock No. _____
(E) Second Initial Flow Pressure 37.4 PSI Initial Opening 15 STATE CORPORATION COMMISSION
(F) Second Final Flow Pressure 37.4 PSI Initial Shut-In 45 AUG 24 1987
(G) Final Shut-In Pressure 1132.5 PSI Final Flow 15 S 24 87
(H) Final Hydrostatic Mud 1667.8 PSI Final Shut-In 30 Wichita Kansas

Our Representative W.M. Nichols TOTAL PRICE \$ 400.00
Printcraft Printers - Hays, KS

15-005-22395-00-00



13850 / 1

This is an actual photograph of recorder chart.

STATE CORPORATION COMMISSION

PRESSURE

POINT	Field Reading	Office Reading	
(A) Initial Hydrostatic Mud.....	1703	1706.7	PSI
(B) First Initial Flow Pressure.....	32	20.3	PSI
(C) First Final Flow Pressure.....	32	20.3	PSI
(D) Initial Closed-in Pressure.....	1206	1202.6	PSI
(E) Second Initial Flow Pressure.....	42	37.4	PSI
(F) Second Final Flow Pressure.....	42	37.4	PSI
(G) Final Closed-in Pressure.....	1153	1132.5	PSI
(H) Final Hydrostatic Mud.....	1692	1667.8	PSI

AUG 24 1987
8-24-87
CONSERVATION DIVISION
Wichita, Kansas

RECEIVED
STATE CORPORATION COMMISSION

AUG 24 1987

RECEIVED
STATE CORPORATION COMMISSION

AUG 31 1987

CONSERVATION DIVISION
Wichita, Kansas

TRILOBITE TESTING COMPANY

P.O. Box 362 • Hays, Kansas 67601

Drill-Stem Test Data

15-065-22395-00-00

Well Name & No.	orena #1	Test No.	2	Date	8-10-87
Company	Marmik Oil Company	Zone Tested	LKC A & B		
Address	Eldorado, Ark.	Elevation	2171	KB	
Co. Rep./Geo.	Curt Morrill	cont.	Abercrombie #4	Est. Ft. of Pay	4'
Location: Sec.	3	Twp.	7s	Rge.	21w
		co.	Graham	State Ks.	

Interval Tested	3407-3454	Drill Pipe Size	4 1/2" XH
Anchor Length	47	Top Choke	1"
Top Packer Depth	3402	Bottom Choke	3/4"
Bottom Packer Depth	3407	Hole Size	7 7/8"
Total Depth	3454	Rubber Size	6 3/4"
Wt. Pipe I.D. — 2.7		Ft. Run	382
Drill Collar — 2.25		Ft. Run	
Mud Wt.	9.6	lb./gal.	Viscosity 43
			Filtrate 9.4
Tool Open @	9:30 a.m.	Initial Blow	Strong 12"

Final Blow Fair 8"

RECEIVED
STATE CORPORATION COMMISSION

Recovery — Total Feet	594'	Flush Tool?	no
Rec.	77'	Feet of	Watery mud
Rec.	517'	Feet of	Salt water
Rec.		Feet of	
Rec.		Feet of	
Rec.		Feet of	

AUG 24 1987
824-87
CONSERVATION DIVISION
Wichita, Kansas

BHT	112	°F	Gravity		°API @		°F	Corrected Gravity		°API		
RW	.088	@	75	°F	Chlorides	78000	ppm	Recovery	Chlorides	3000	ppm	System

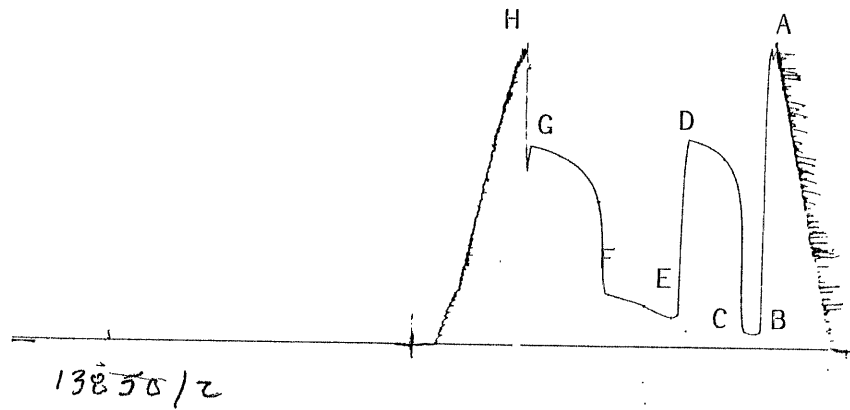
(A) Initial Hydrostatic Mud	1693.7	PSI	AK1 Recorder No.	13580	Range	4325
(B) First Initial Flow Pressure	80.1	PSI	@ (depth)	3404	w/Clock No.	31154
(C) First Final Flow Pressure	91.9	PSI	AK1 Recorder No.	13581	Range	4425
(D) Initial Shut-In Pressure	1156.3	PSI	@ (depth)	3400	w/Clock No.	25813
(E) Second Initial Flow Pressure	160.3	PSI	Initial Opening	15		
(F) Second Final Flow Pressure	292.7	PSI	Initial Shut-In	45		
(G) Final Shut-In Pressure	1109.9	PSI	Final Flow	60		
(H) Final Hydrostatic Mud	1665.6	PSI	Final Shut-In	60		

Our Representative Wm. Nichols

TOTAL PRICE \$ 400.00

Printcraft Printers - Hays, KS

15-065-22395-00-00



RECEIVED
 This is an actual photograph of recorder chart.
 STATE CORPORATION COMMISSION

POINT	PRESSURE	
	Field Reading	Office Reading
(A) Initial Hydrostatic Mud.....	1703	1693.7
(B) First Initial Flow Pressure.....	64	80.1
(C) First Final Flow Pressure.....	106	91.9
(D) Initial Closed-in Pressure.....	1163	1156.3
(E) Second Initial Flow Pressure.....	160	160.3
(F) Second Final Flow Pressure.....	299	292.7
(G) Final Closed-in Pressure.....	1120	1109.9
(H) Final Hydrostatic Mud.....	1692	1665.6

AUG 24 1987
 8-24-87
 CONSERVATION DIVISION
 Wichita, Kansas

TRILOBITE TESTING COMPANY

P.O. Box 362 • Hays, Kansas 67601

15-065-22395-00-00

Drill-Stem Test Data

Well Name & No. Lorena #1 Test No. 3 Date 8-11-87
Company Marimik Oil Company Zone Tested Reagan
Address Eldorado, Ark. Elevation 2171 KB
Co. Rep./Geo. Curt Morrill Cont. Abercrombie #4 Est. Ft. of Pay _____
Location: Sec. 3 Twp. 7s. Rge. 21w Co. Graham State Ks.

Interval Tested 3734-3794 Drill Pipe Size 4 1/2" XH
Anchor Length 60' Top Choke — 1" _____
Top Packer Depth 3729 Bottom Choke — 3/4" _____
Bottom Packer Depth 3734 Hole Size — 7/8" _____
Total Depth 3794 Rubber Size — 6 3/4" _____
Wt. Pipe I.D. — 2.7 _____ Ft. Run 382
Drill Collar — 2.25 _____ Ft. Run _____
Mud Wt. 9.5 lb./gal. Viscosity 45 Filtrate 9.8
Tool Open @ 2:47 p.m. Initial Blow Strong 18 plus "

Final Blow _____

Recovery — Total Feet 2227' Flush Tool? _____

Rec. 186 Feet of Watery mud
Rec. 2041 Feet of Salt water
Rec. _____ Feet of _____
Rec. _____ Feet of _____
Rec. _____ Feet of _____
BHT 116 °F Gravity _____ °API @ _____ °F Corrected Gravity _____ °API

RECEIVED
STATE CONSERVATION COMMISSION

AUG 24 1987

8-24-87

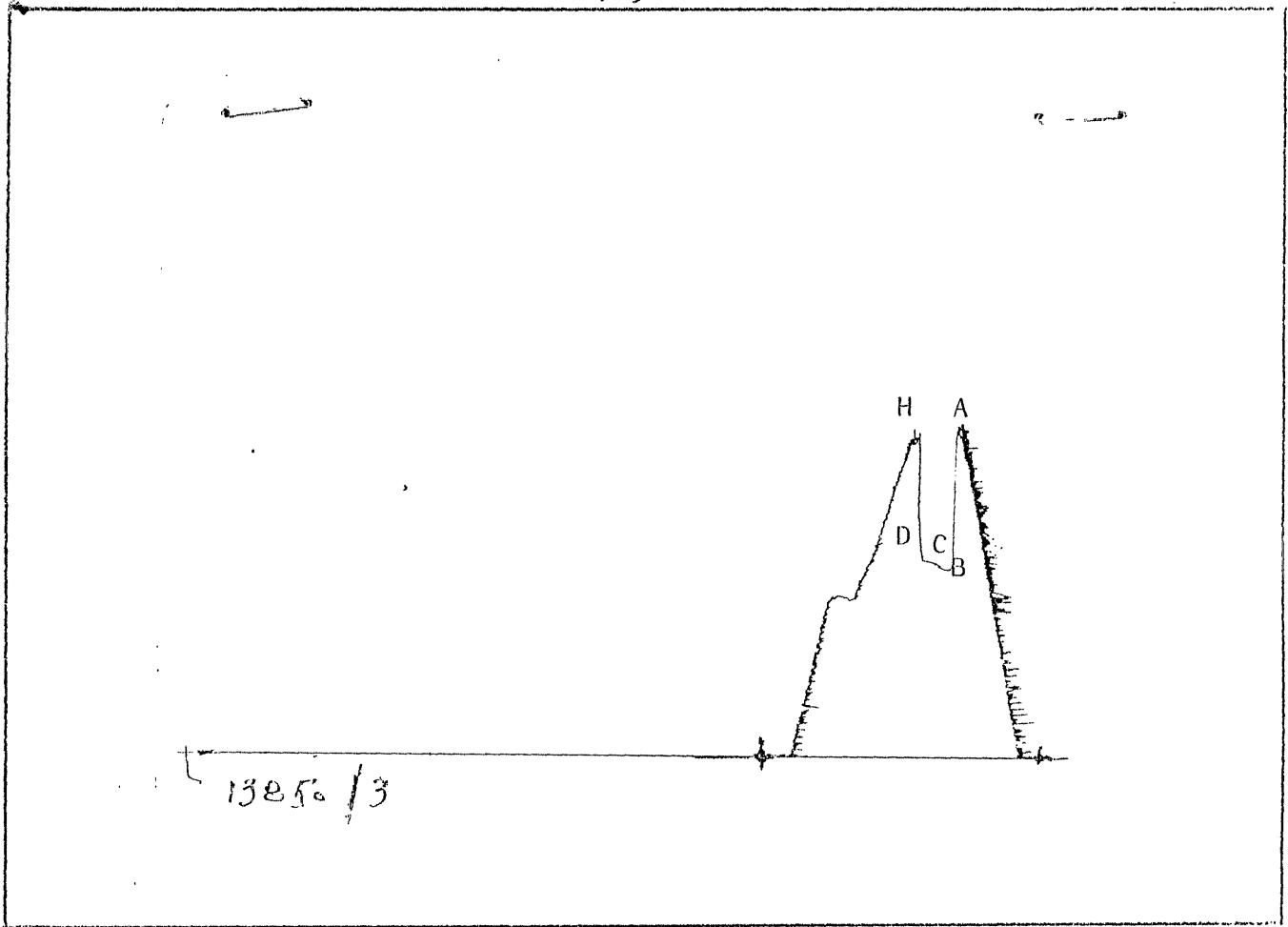
CONSERVATION DIVISION
Wichita, Kansas

RW _____ @ _____ °F Chlorides _____ ppm Recovery Chlorides 3000 ppm System
(A) Initial Hydrostatic Mud 1963.2 PSI AK1 Recorder No. 13580 Range 4325
(B) First Initial Flow Pressure 1101.3 PSI @ (depth) 3785 w/Clock No. 31154
(C) First Final Flow Pressure 1118.5 PSI AK1 Recorder No. 3581 Range 4425
(D) Initial Shut-In Pressure 1153 PSI @ (depth) 3791 w/Clock No. 25813
(E) Second Initial Flow Pressure _____ PSI Initial Opening 12
(F) Second Final Flow Pressure _____ PSI Initial Shut-In 15
(G) Final Shut-In Pressure _____ PSI Final Flow _____
(H) Final Hydrostatic Mud 1919.9 PSI Final Shut-In _____

Our Representative wm. Nichols

TOTAL PRICE \$ 400.00

15-065-22395-00-00



This is an actual photograph of recorder chart.

RECEIVED
STATE CORPORATION COMMISSION

8-24-87
AUG 24 1987

PRESSURE

POINT	Field Reading	Office Reading	
(A) Initial Hydrostatic Mud.....	1995	1963.2	PSI
(B) First Initial Flow Pressure.....	1099	1101.3	PSI
(C) First Final Flow Pressure.....	1120	1118.5	PSI
(D) Initial Closed-in Pressure.....	1153	1153	PSI
(E) Second Initial Flow Pressure.....			PSI
(F) Second Final Flow Pressure.....			PSI
(G) Final Closed-in Pressure.....			PSI
(H) Final Hydrostatic Mud.....	1919	1919.9	PSI

CONSERVATION DIVISION
Wichita, Kansas