

TYPE

## NOTICE OF INTENTION TO DRILL

C-1

TO BE FILED WITH THE STATE CORPORATION COMMISSION  
PRIOR TO COMMENCEMENT OF WELL

API Number 15-121-20,901-  
(For office use only) 00-00

1. Operator KEHM, INC.  
Address MOUND CITY, KANSAS 66056

Starting Date 5-21-79

County MIAMI

2. Contractor m ENERGY EXPLORATION ENTERPRISES, INC.  
Address MOUND CITY, KANSAS 66056

Sec 26 Twp 17 S Rge 21 E  
SE  $\frac{1}{4}$   
Spot Location 800 WEL 600NSL

3. Type of Equipment: Rotary XX Cable Tool \_\_\_\_\_  
4. Well to be Drilled for: Oil XX Gas \_\_\_\_\_  
Disposal \_\_\_\_\_ Input \_\_\_\_\_ Other \_\_\_\_\_  
5. Depth of Deepest Fresh Water within 1 mile none ft.  
6. Depth of Municipal Water Well within 3 miles none ft.  
7. Depth to Protect all Fresh Water 200 ft.  
8. Amount of Surface Casing to be set 70 ft.  
9. Alternate No. 1 \_\_\_\_\_ No. 2 XX \_\_\_\_\_

Nearest Lease Line 600 ft.

Lease Name Marvin Caylor WEST

Well No. # 05

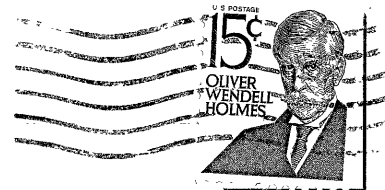
Est. Total Depth 700 ft.

REMARKS:

OPERATOR STATES THAT HE WILL COMPLY WITH K. S. A. 55-128

Signature of Operator Gilbert McGowan

OK JB/bl



**State Corporation Commission of Kansas**  
**Conservation Division**  
**245 North Water**  
**Wichita, Kansas 67202**

RECEIVED  
STATE CORPORATION COMMISSION  
05-21-79  
MAY 21 1979

CONSERVATION DIVISION  
WICHITA, KANSAS

**(IF PREFERRED, MAIL IN ENVELOPE)**